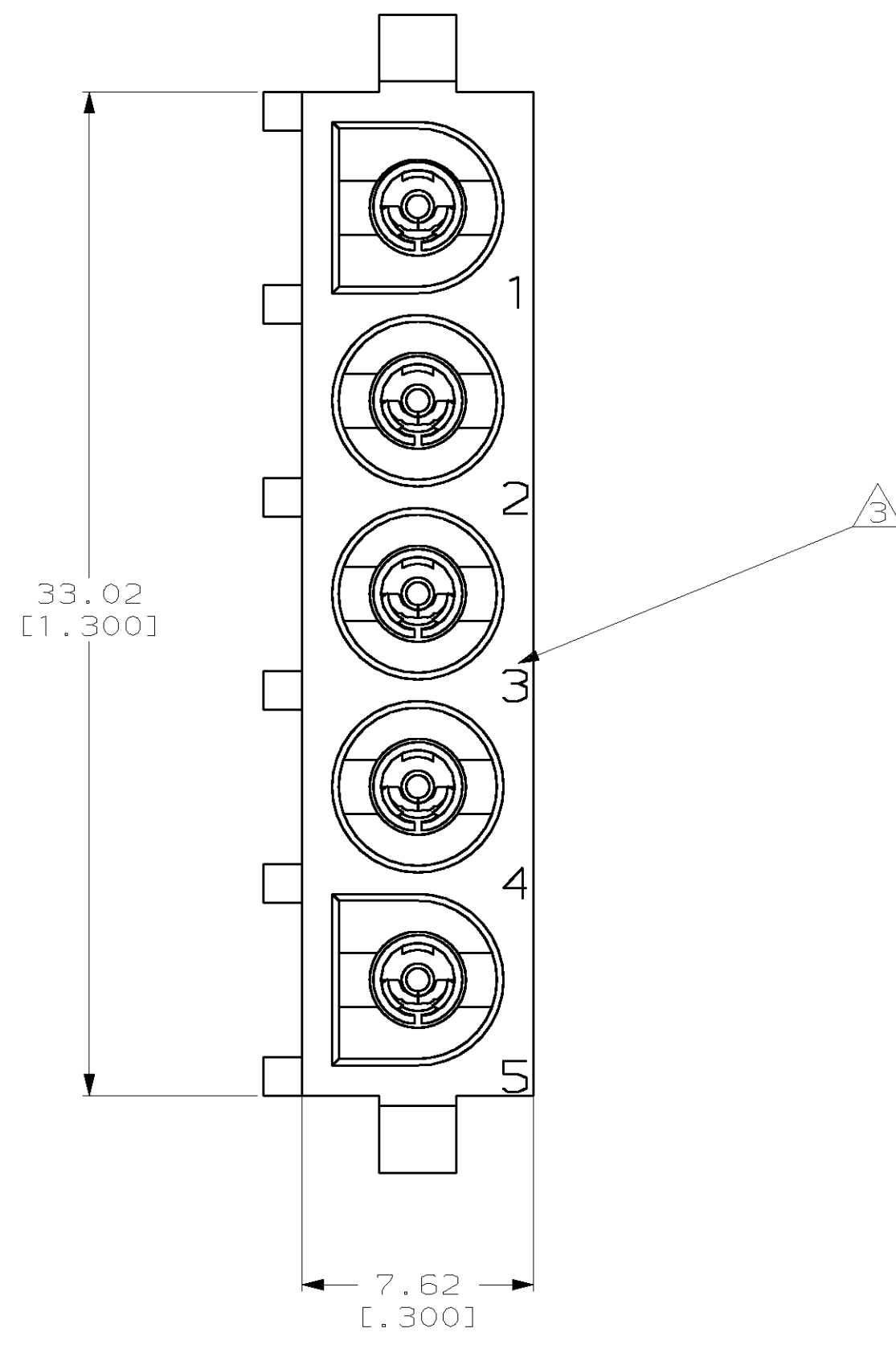
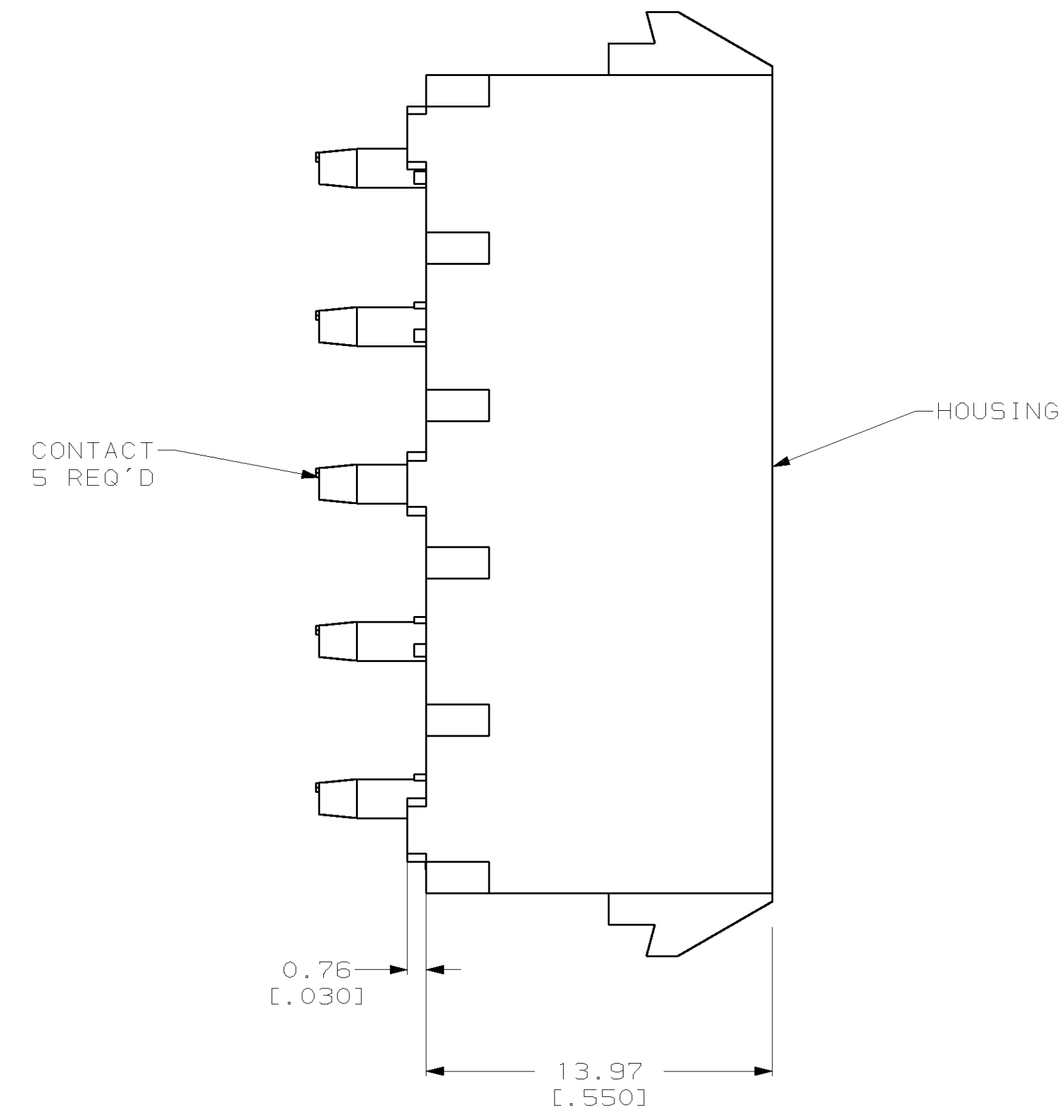
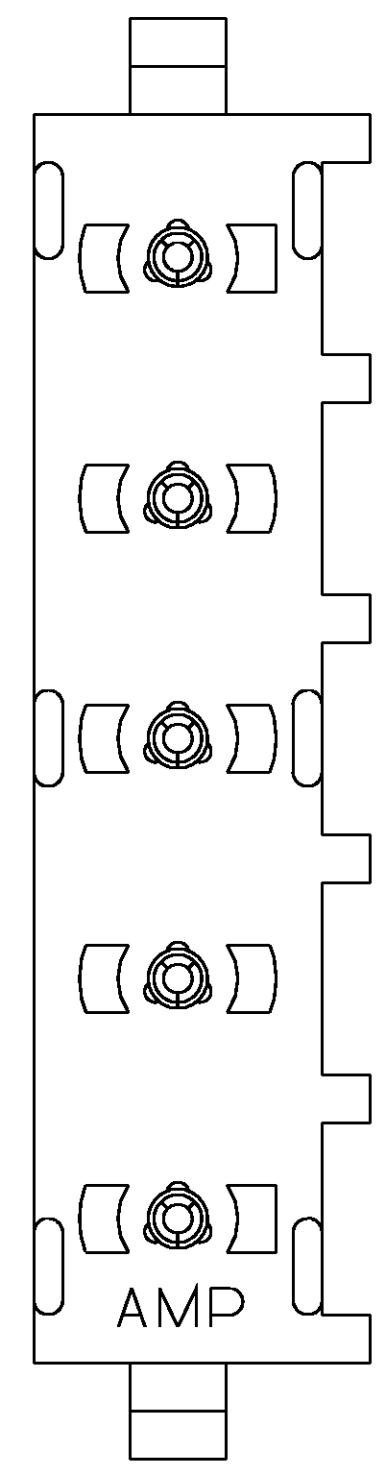
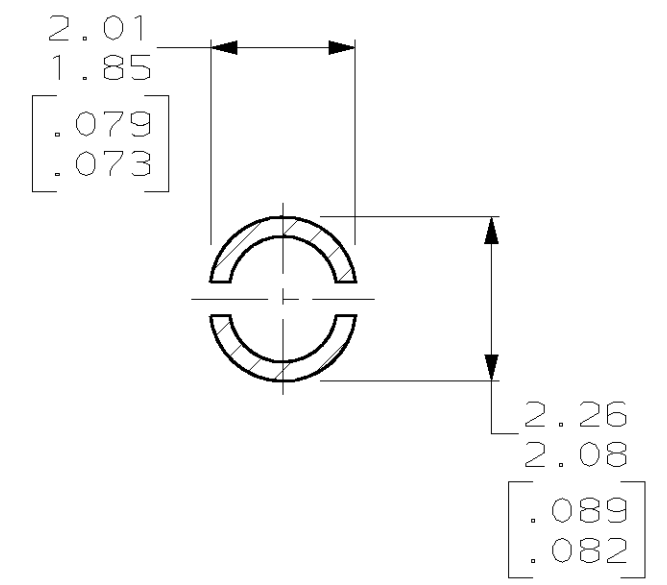
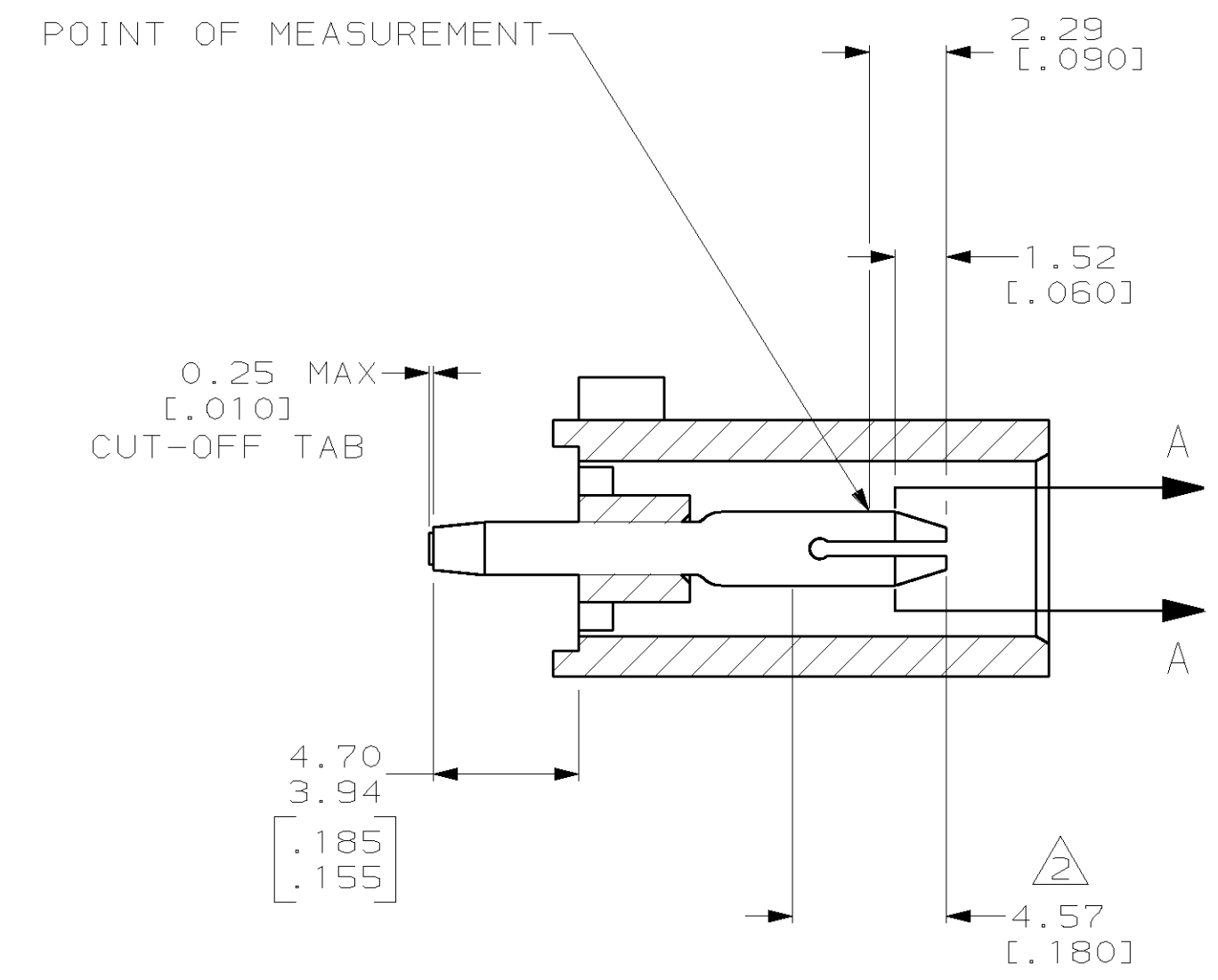


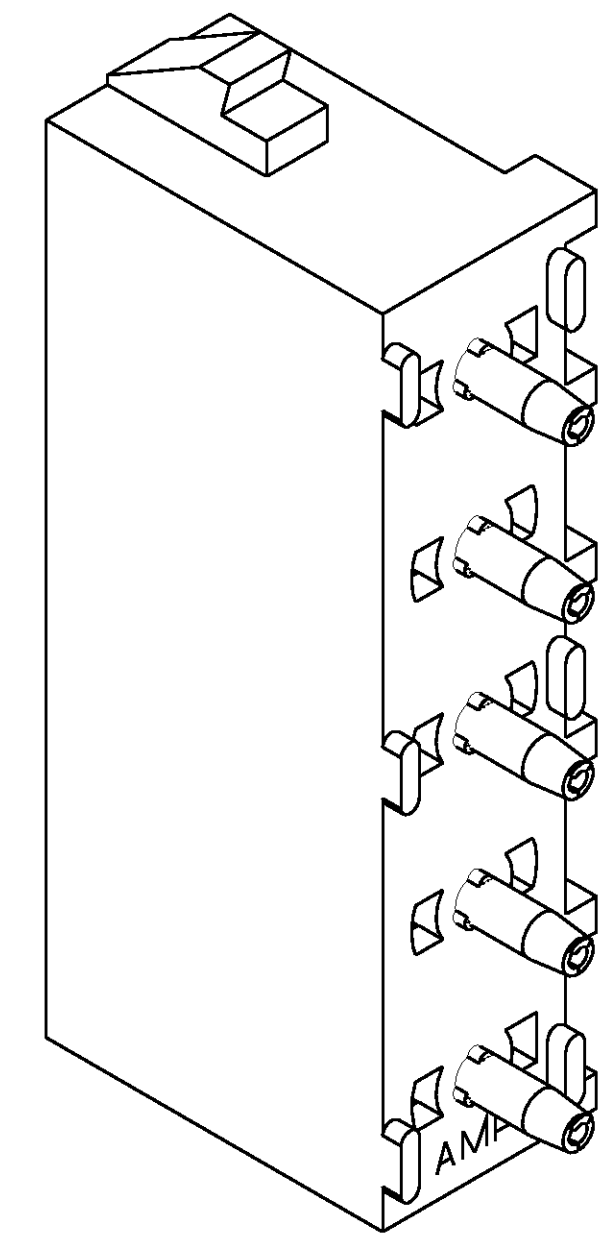
REVISONS		DATE	OWN	APPROV
CM	53	L	REV & REDWN PER EC	OG1B-0252-98
		10-05-98	BL	RS



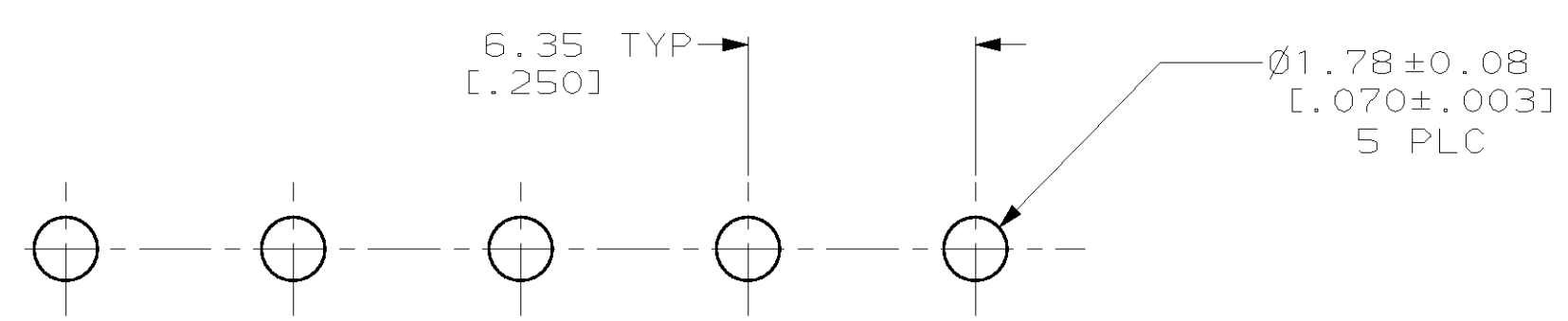
- PARTS COMPLY TO AMP SOLDERABILITY SPECIFICATION 109-11-3.
- CONTACT IS PLATED OVERALL WITH 0.00127 [.000050] NICKEL, THEN 0.00076 [.000030] GOLD OVER CONTACT LENGTH INDICATED AND MATTE TIN ON SOLDER TAIL END.
- CIRCUIT IDENTIFICATION CHARACTERS ARE ADJACENT TO THE INDICATED CAVITIES, BUT LOCATION AND ORIENTATION MAY DIFFER FROM PRINT.
- DIMENSIONS IN BRACKETS ARE IN INCHES.



SECTION A-A
SCALE 10:1



3-DIMENSIONAL MODEL
NTS



RECOMMENDED MOUNTING HOLE PATTERN
FOR 1.57 [.062] THICK P.C. BOARD

PHOSPHOR BRONZE, GOLD Δ	NYLON, UL94V-2, NATURAL	640466-2
PHOSPHOR BRONZE, PRE-TIN	NYLON, UL94V-2, NATURAL	640466-1
PIN CONTACT MATERIAL AND FINISH	HOUSING MATERIAL	PART NO

THIS DRAWING IS A CONTROLLED DOCUMENT.		Dwn B. LEWIS	10-05-98
DIMENSIONS mm (INCHES)		CHK R. SWING	10-05-98
TOLERANCES UNLESS OTHERWISE SPECIFIED.		APPROV M. TRULL	10-05-98
0 PLC	±	NAME PIN HEADER ASSEMBLY, 5 CIRCUIT UNIVERSAL MATE-N-LOK™	
1 PLC	±	SIZE A1	
2 PLC	±0.13 (.005)	CAGE CODE 00779	
3 PLC	±	DRAWING NO 640466	
4 PLC	±	SCALE 5:1	
ANGLES	40°-30°	SHEET 1 OF 1	
MATERIAL	SEE TABLE	REV L	
FINISH	SEE TABLE	CUSTOMER DRAWING	

