

DO NOT SCALE FROM THIS PRINT

DESIGNED & DIMENSIONED IN MILLIMETERS [INCHES]

MTCA-XXX-XX-X-DV-SMT-K-TR

- A** No OF POSITIONS
-020, *-040, *-060, *-080, -085, & *-100 (PER ROW)
- LEAD STYLE
-02: 1.60[.063] THICK CARD
- PLATING SPECIFICATION
-S: SELECTIVE, .000030 GOLD ON CONTACT, TIN ON TAIL
- OPTION
-TR: TAPE & REEL (SEE NOTE 4)
- OPTION
-K: POLYIMIDE FILM PAD
- SMT TYPE
DUAL VERTICAL

(* = NOT TOOLED)

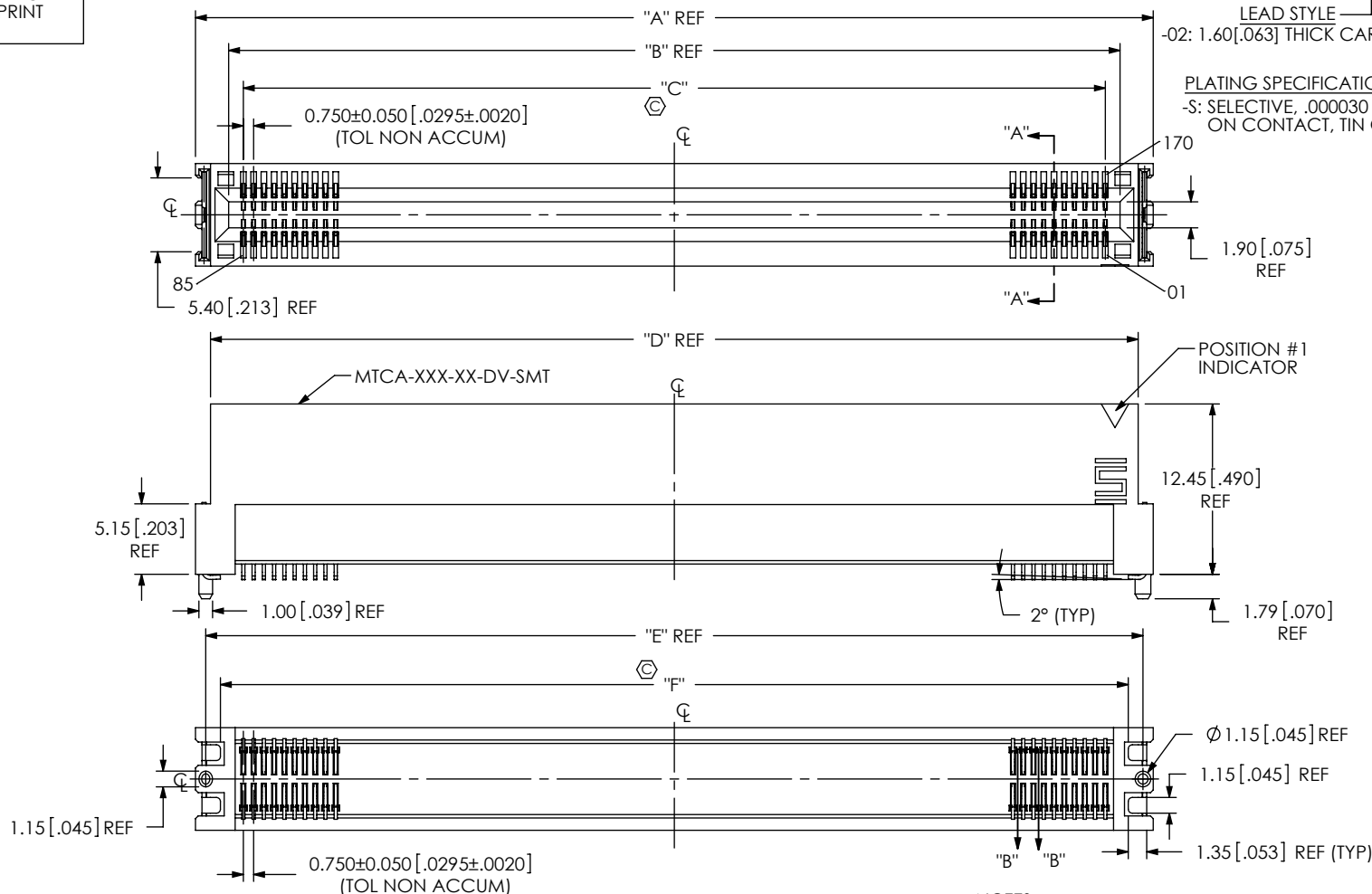
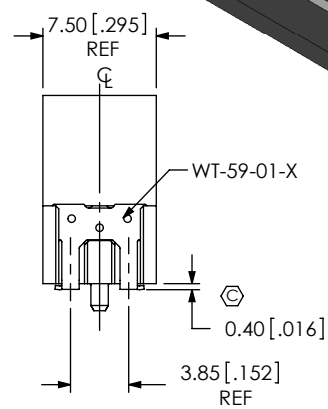
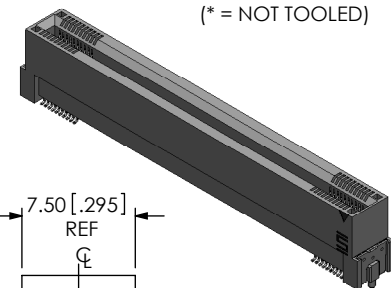



FIG. 1
MTCA-085-02-X-DV-SMT-X-TR SHOWN
(SOME CENTER FEATURES NOT SHOWN FOR CLARITY)

- NOTES:
- ⊗ REPRESENTS A CRITICAL DIMENSION.
 - MINIMUM PUSHOUT FORCE: SIGNAL: 4.90N[1 LB], WELD TAB: 4.90N[1 LB].
 - MAXIMUM ALLOWABLE BOW: 0.10[.004] MM/MM AFTER ASSEMBLY.
 - FOR QUANTITIES UP TO 49 PIECES, NO LEADER, TRAILER, OR REEL WILL BE SUPPLIED. FOR QUANTITIES OF 50-124 PIECES, NO LEADER OR TRAILER WILL BE SUPPLIED.
 - COPLANARITY MEASUREMENT INCLUDES WT'S.

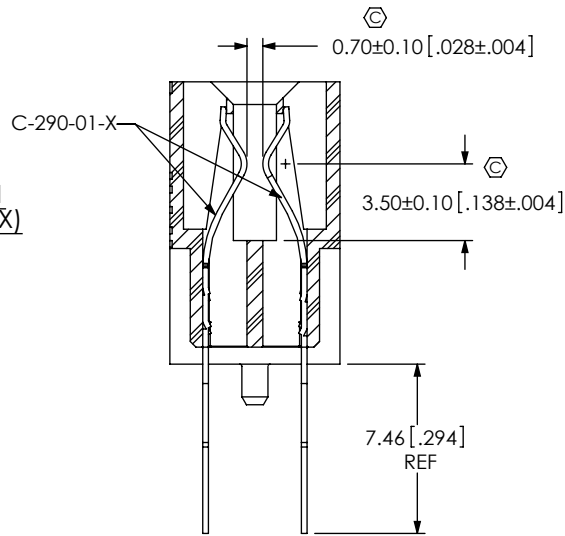
TABLE 1 **A**

No. OF POS	"A"	"B"	"C"	"D"	"E"	"F"
-020	21.25 [0.837]	16.40 [0.646]	14.250 [0.5610]	19.05 [0.750]	19.750 [0.7776]	17.40 [0.685]
*-040	36.25 [1.427]	31.40 [1.236]	29.250 [1.1516]	34.05 [1.341]	34.750 [1.3681]	32.60 [1.283]
*-060	51.25 [2.018]	46.40 [1.827]	44.250 [1.7421]	49.05 [1.931]	49.750 [1.9587]	47.60 [1.874]
*-080	66.25 [2.608]	64.40 [2.535]	59.250 [2.3327]	64.05 [2.522]	64.750 [2.5492]	62.60 [2.465]
-085	70.00 [2.756]	65.15 [2.565]	63.000 [2.4803]	67.80 [2.669]	68.500 [2.6969]	66.20 [2.606]
*-100	81.25 [3.199]	76.40 [3.008]	74.250 [2.9232]	79.05 [3.112]	79.750 [3.1398]	77.60 [3.055]

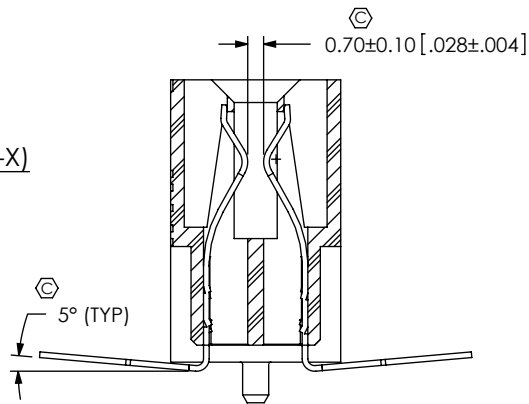
(* = NOT TOOLED)

UNLESS OTHERWISE SPECIFIED, DIMENSIONS ARE IN MILLIMETERS. TOLERANCES ARE: DECIMALS ANGLES X.X: ±0.3 [01] X.XX: ±0.13 [005] X.XXX: ±0.051 [0020]	PROPRIETARY NOTE THIS DOCUMENT CONTAINS INFORMATION CONFIDENTIAL AND PROPRIETARY TO SAMTEC, INC. AND SHALL NOT BE REPRODUCED OR TRANSFERRED TO OTHER DOCUMENTS OR DISCLOSED TO OTHERS OR USED FOR ANY PURPOSE OTHER THAN THAT WHICH IT WAS OBTAINED WITHOUT THE EXPRESSED WRITTEN CONSENT OF SAMTEC, INC.	 520 PARK EAST BLVD, NEW ALBANY, IN 47150 PHONE: 812-944-6733 FAX: 812-948-5047 e-Mail: info@SAMTEC.com code: 55322
INSULATOR: LCP, COLOR: BLACK CONTACT: PHOS BRONZE WELD TAB: BRONZE		DESCRIPTION: MTCA SMT ASSEMBLY
DWG. NO. MTCA-XXX-XX-X-DV-SMT-K-TR		BY: ROY LUO 7/3/2009 SHEET 1 OF 3

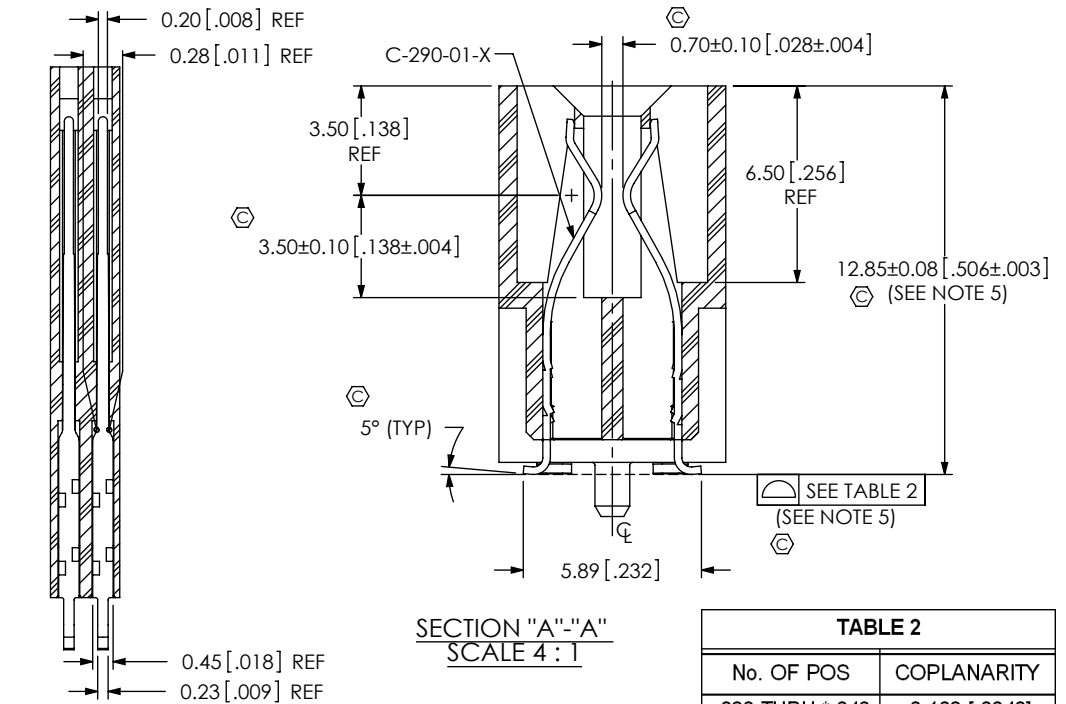
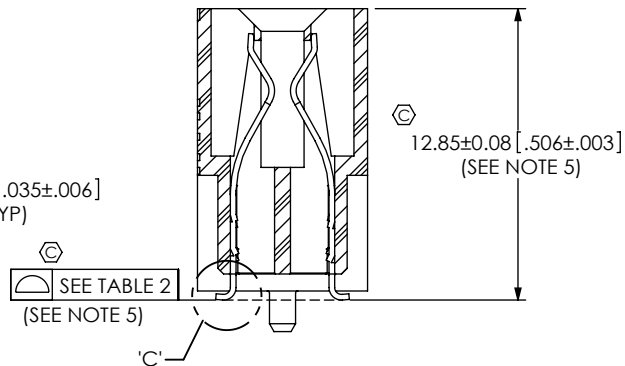
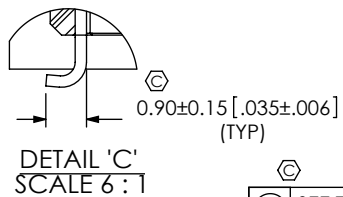
IN-PROCESS 1
(FILL C-290-01-X)



IN-PROCESS 2
(FORM C-290-01-X)



IN-PROCESS 3
(SHEAR C-290-01-X)



SECTION "B"-"B"
SCALE 6 : 1

SECTION "A"-"A"
SCALE 4 : 1

TABLE 2	
No. OF POS	COPLANARITY
-020 THRU *-040	0.102 [.0040]
*-060 THRU *-100	0.152 [.0060]

(* = NOT TOOLED)

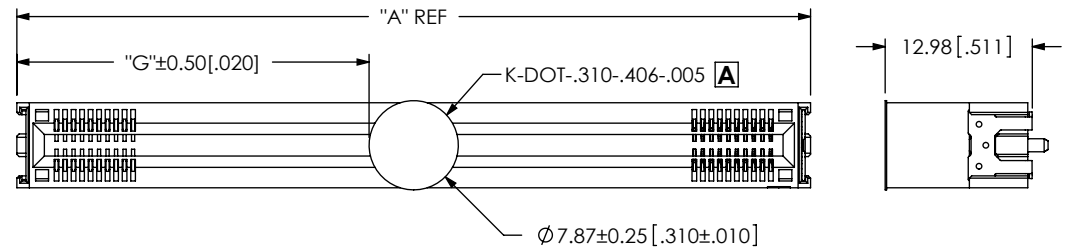


TABLE 3		
No. OF POS	"G"	
-020	6.69	[0.263]
*-040	14.23	[0.560]
*-060	21.73	[0.856]
*-080	29.23	[1.151]
-085	31.06	[1.223]
*-100	36.73	[1.446]

(* = NOT TOOLED)

FIG. 2
-K OPTION
(MTCA-085-02-X-DV-SMT-K-TR SHOWN)
(SOME CENTER FEATURES NOT SHOWN FOR CLARITY)

F:\DWG\MISC\MKTG\MTCA-XXX-XX-X-DV-SMT-K-TR-MKT.SLDDRW

PROPRIETARY NOTE

THIS DOCUMENT CONTAINS INFORMATION CONFIDENTIAL AND PROPRIETARY TO SAMTEC, INC. AND SHALL NOT BE REPRODUCED OR TRANSFERRED TO OTHER DOCUMENTS OR DISCLOSED TO OTHERS OR USED FOR ANY PURPOSE OTHER THAN THAT WHICH IT WAS OBTAINED WITHOUT THE EXPRESSED WRITTEN CONSENT OF SAMTEC, INC.

DO NOT SCALE DRAWING

SHEET SCALE: 2:1

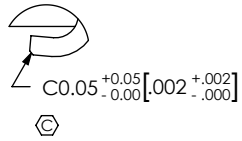
samtec

520 PARK EAST BLVD, NEW ALBANY, IN 47150
PHONE: 812-944-6733 FAX: 812-948-5047
e-Mail: info@SAMTEC.com code: 55322

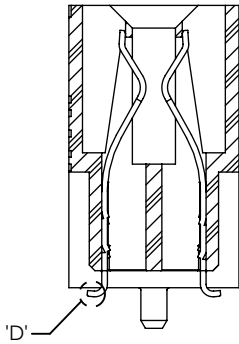
DESCRIPTION:	MTCA SMT ASSEMBLY
DWG. NO.	MTCA-XXX-XX-X-DV-SMT-K-TR
BY: ROY LUO 7/3/2009	SHEET 2 OF 3

IN-PROCESS 4
(COIN PIN)

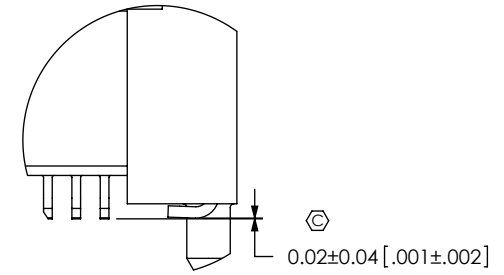
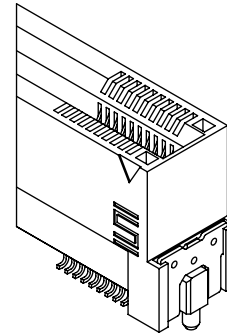
A



DETAIL 'D'
SCALE 10 : 1



STEP 4
(FILL WT-59-01-X)

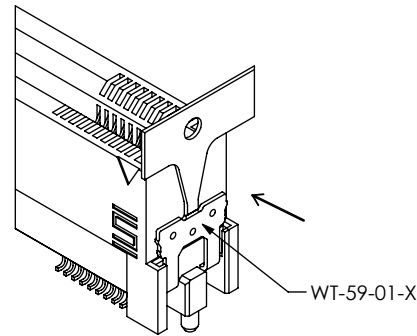


DETAIL 'C'
SCALE 5 : 1

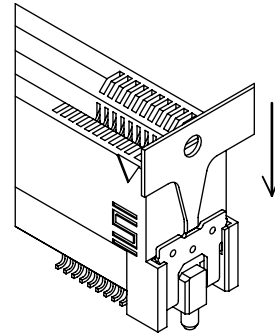
IN-PROCESS 5
(FILL WT-59-01-X)

A

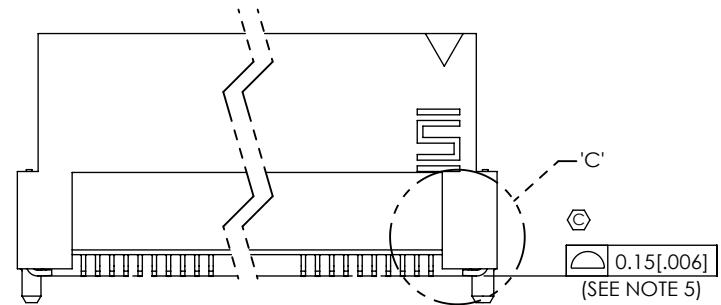
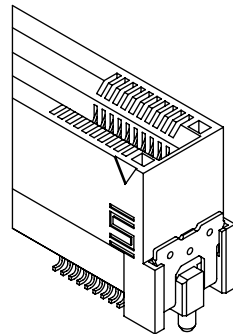
STEP 1
(MOVE INTO SLOT)



STEP 2
(INSERT TO SLOT)



STEP 3
(BREAK OFF CARRIER)



A

PROPRIETARY NOTE
THIS DOCUMENT CONTAINS INFORMATION
CONFIDENTIAL AND PROPRIETARY TO
SAMTEC, INC. AND SHALL NOT BE REPRODUCED
OR TRANSFERRED TO OTHER DOCUMENTS OR
DISCLOSED TO OTHERS OR USED FOR ANY
PURPOSE OTHER THAN THAT WHICH IT WAS
OBTAINED WITHOUT THE EXPRESSED WRITTEN
CONSENT OF SAMTEC, INC.

DO NOT SCALE DRAWING

SHEET SCALE: 2.5:1

samtec

520 PARK EAST BLVD, NEW ALBANY, IN 47150
PHONE: 812-944-6733 FAX: 812-948-5047
e-Mail: info@SAMTEC.com code: 55322

DESCRIPTION:
MTCA SMT ASSEMBLY

DWG. NO.
MTCA-XXX-XX-X-DV-SMT-K-TR

BY: ROY LUO 7/3/2009 SHEET 3 OF 3