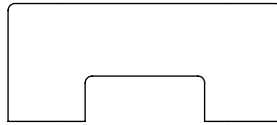
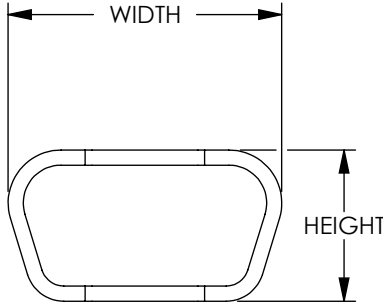
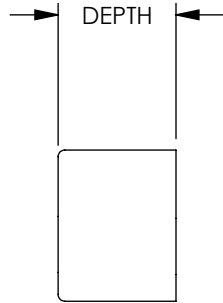


THE INFORMATION CONTAINED IN THIS DRAWING IS THE SOLE PROPERTY OF L-COM, INC. ANY REPRODUCTION IN PART OR WHOLE WITHOUT THE WRITTEN PERMISSION OF L-COM, INC. IS PROHIBITED.

REVISIONS			
REV	DESCRIPTION	DATE	APPROVED
E	ECN 4234: REVISED HEIGHT AND WIDTH DIMENSIONS	9/2/09	D.FRISIELLO




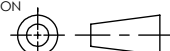
P/N	HEIGHT		WIDTH		DEPTH	
	INCH	MM	INCH	MM	INCH	MM
CVR9F	.41	10.4	.73	18.6	.30	7.6
CVR9M	.45	11.5	.80	20.3	.30	7.6
CVR15F	.41	10.4	1.05	26.7	.30	7.6
CVR15M	.46	11.7	1.11	28.1	.30	7.6
CVR25F	.39	10.0	1.58	40.2	.30	7.6
CVR25M	.44	11.2	1.65	42.0	.30	7.6
CVR37F	.38	9.7	2.24	56.9	.30	7.6
CVR37M	.44	11.2	2.30	58.4	.30	7.6
CVR50F	.50	12.7	2.13	54.1	.30	7.6
CVR50M	.55	14.0	2.21	56.1	.30	7.6



NOTE

1. MATERIAL: PVC, BLACK
2. PACKAGE TEN (10) PIECES PER BAG

RoHS Compliant ✓

UNLESS OTHERWISE SPECIFIED, DIMENSIONS ARE IN INCHES [mm] OVERALL CABLE LENGTH TOLERANCE: ≤12 [305] = +1 [25] / -0 >12 [305] ≤60 [1524] = +2 [51] / -0 >60 [1524] ≤120 [3048] = +4 [102] / -0 >120 [3048] ≤300 [7620] = +6 [152] / -0 >300 [7620] = +3% / -0% ALL OTHER DIMENSIONAL TOLERANCES: .X = ± .2 .XX = ± .02 .XXX = ±.005	APPROVALS DRAWN BY J. KIEZULAS CHECKED BY C. McCORMICK APPROVED BY R. CARRICK	DATE 7/1/2005 7/1/2005 7/1/2005	 45 BEECHWOOD DRIVE NORTH ANDOVER, MA 01845		
	CONFIGURATION DETAILS OF UNDIMENSIONED FEATURES MAY VARY	CATEGORY DATA CABLING	PRODUCT DESCRIPTION D SUBMINIATURE DUST COVER	SCALE: NONE CAD FILE: CVR9F.SLDDRW SHEET 1 OF 1	
PROJECTION 	COLOR VARIATIONS MAY OCCUR	SIZE A	FSCM NO. 43321	DWG. NO. CVR9F	REV. E