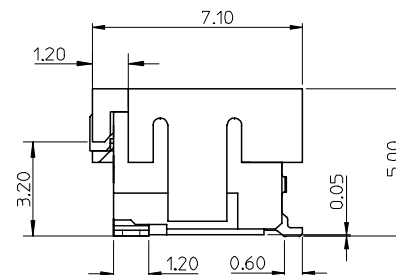
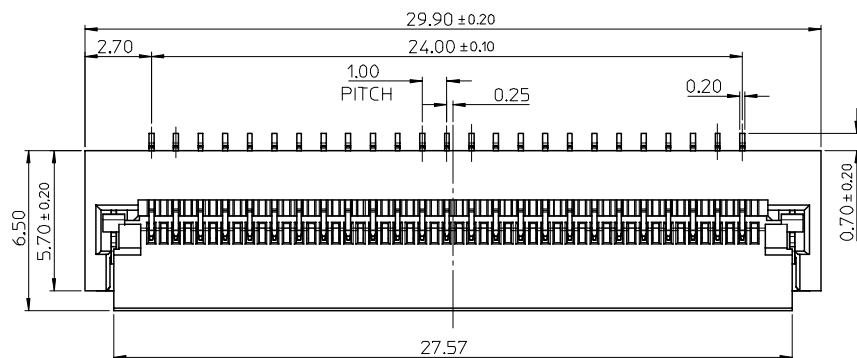


RIGHT VIEW (W/O PP COVER AND ACTUATOR OPENING)

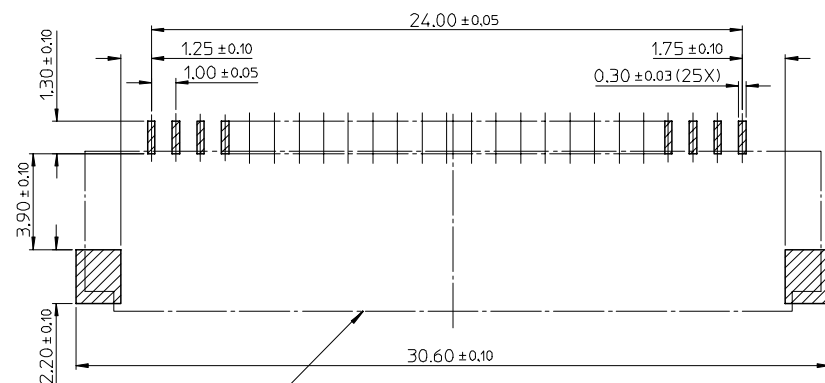


NEW RELEASE EC NO: SH2007-0067 DRWN:HHE 2006/08/23 CHKD: IWANG 2006/08/24 APPR: JNCHEN 2006/09/04	QUALITY SYMBOLS ▽=0 ▽C=0	DESCRIPTION	GENERAL TOLERANCES (UNLESS SPECIFIED)		DIMENSION STYLE MM ONLY		SCALE 6:1	DESIGN UNITS METRIC	THIRD ANGLE PROJECTION		
				mm	INCH	DRAWN BY RZHANG	DATE 2006/04/17	TITLE 1.0 FPC CONN. ZIF R/A HOUSING ASSY BTM CONTACT -LEAD FREE-	MOLEX MOLEX INCORPORATED	SHEET NO. 1 OF 2	
			4 PLACES	± ---	± ---	CHECKED BY IWANG	DATE 2006/04/17				
			3 PLACES	± ---	± ---	APPROVED BY JNCHEN	DATE 2006/04/17				
			2 PLACES	± 0.25	± ---	MATERIAL NO. 47331-2501	DOCUMENT NO. SD-47331-001				
	1 PLACE	± 0.25	± ---								
	ANGULAR ± 3 °		DRAFT WHERE APPLICABLE MUST REMAIN WITHIN DIMENSIONS		SIZE A3		THIS DRAWING CONTAINS INFORMATION THAT IS PROPRIETARY TO MOLEX INCORPORATED AND SHOULD NOT BE USED WITHOUT WRITTEN PERMISSION				

10 9 8 7 6 5 4 3 2 1

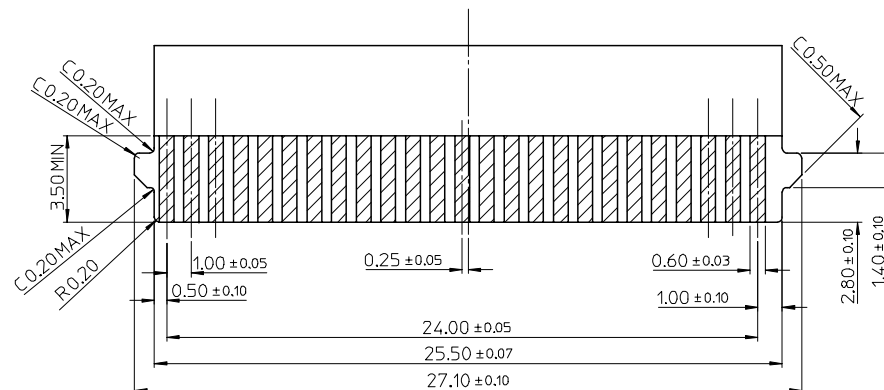


TOP VIEW (WITHOUT THE PICK AND PLACE COVER)



CONNECTOR POSITION


RECOMMENDED PCB LAYOUT DIMENSIONS
MOUNTING SIDE



APPLICATION FPC RECOMMENDED DIMENSIONS
THICKNESS IS 0.30 ± 0.05

NOTES:

1. MATERIAL:
HOUSING: LIQUID CRYSTAL POLYMER GLASS FILLED, UL94V-0, NATURE.
ACTUATOR: PA9T, UL94V-0, BLACK.
TERMINAL: PHOSPHOR BRONZE.
FITTING-NAIL: PHOSPHOR BRONZE.
2. PLATING:
TERMINAL: MATTE TIN PLATING OVER NICKEL PLATING OVERALL.
FITTING NAIL: MATTE TIN PLATING OVER NICKEL PLATING OVERALL.
3. COPLANARITY OF TERMINAL SOLDER TAILS AND FITTING NAILS IS 0.1mm MAX..
4. IN THE PACKAGE, THE PP COVER SHOULD BE FIXED.
5. SPECIFICATION REFER TO PS-47331-001.
6. PACKAGE REFER TO PK-47331-001.
7. THE PART NO. AFTER PACKAGE IS 47331-2591.

SEE SHEET 1 EC NO: SH2007-0067 DRWN:HHE 2006/08/23 CHKD: IWANG 2006/08/24 APPR: JNCHEN 2006/09/04	DESCRIPTION	QUALITY SYMBOLS ▽=0 ▽C=0	GENERAL TOLERANCES (UNLESS SPECIFIED)			DIMENSION STYLE MM ONLY		SCALE 6:1	DESIGN UNITS METRIC	 THIRD ANGLE PROJECTION	
				mm	INCH	DRAWN BY RZHANG	DATE 2006/04/17	TITLE 1.0 FPC CONN. ZIF R/A HOUSING ASSY BTM CONTACT -LEAD FREE-			
			4 PLACES	± ---	± ---	CHECKED BY IWANG	DATE 2006/04/17				
			3 PLACES	± ---	± ---	APPROVED BY JNCHEN	DATE 2006/04/17	MOLEX MOLEX INCORPORATED			
			2 PLACES	± 0.25	± ---	MATERIAL NO.			DOCUMENT NO.		SHEET NO. 2 OF 2
			1 PLACE	± 0.25	± ---	DRAFT WHERE APPLICABLE MUST REMAIN WITHIN DIMENSIONS			SIZE A3		
			THIS DRAWING CONTAINS INFORMATION THAT IS PROPRIETARY TO MOLEX INCORPORATED AND SHOULD NOT BE USED WITHOUT WRITTEN PERMISSION								