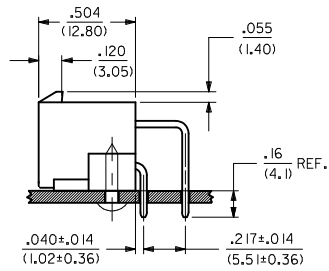
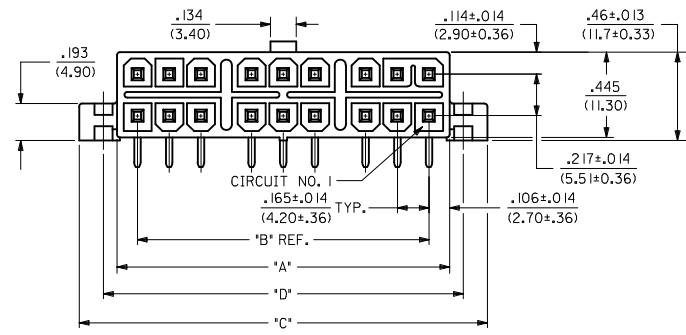
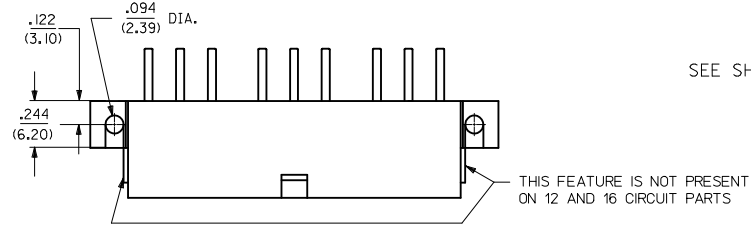
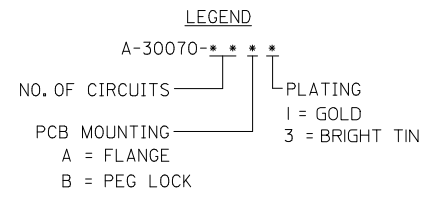


OPTION A FLANGE MOUNT

SEE SHT. 2 FOR ADDITIONAL INFORMATION

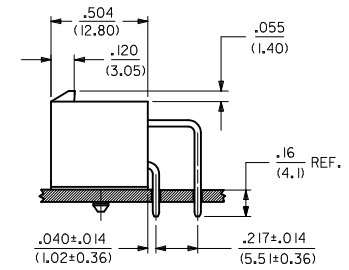
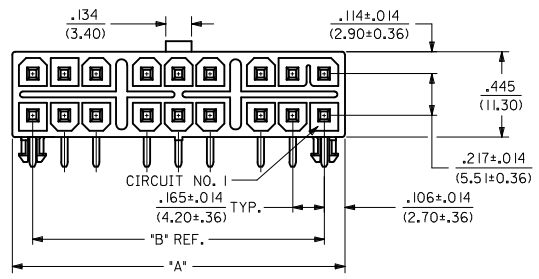
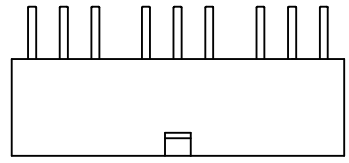


- NOTES:
- MATERIALS:
HOUSING: POLYESTER, UNFILLED, UL94 V-0, COLOR: BLACK
PINS: BRASS
 - PLATING:
1=.000030/(0.00076) MIN. GOLD OVER
.000050/(0.00127) MIN. NICKEL
3=.000200/(0.00508) MIN. BRIGHT TIN OVER
.000100/(0.00254) MIN. COPPER
 - PRODUCT SPECIFICATION: PS-5556-003
 - PACKAGING: BULK PACKAGING
 - MATES WITH TPA RECEPTACLE NO. 30067-*
 - PARTS ARE NOT DESIGNED TO BE MATED OR UNMATED WHILE CIRCUITS ARE LIVE.
 - PART IS NOT DESIGNED FOR CURRENT SHARING.
 - PART CONFORMS TO CLASS "B" REQUIREMENTS OF COSMETIC SPECIFICATION PS-45499-002.



OPTION B PEG MOUNT

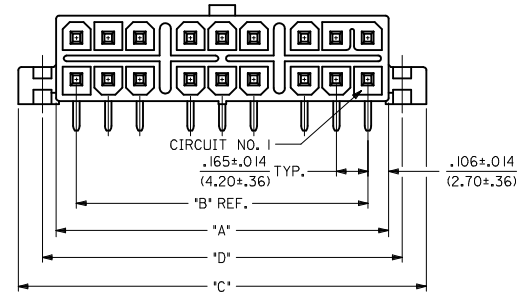
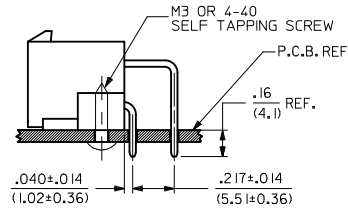
SEE SHT. 3 FOR ADDITIONAL INFORMATION



| | | | | | | |
|--|--|--------------------------------------|--|---|--|--|
| MODIFY FLANGE NOTE IEC NO: UCP2012-0757 DRW: NGUYEN CHKD: JELL APPR: FSMITH | 2011/09/07 2011/09/07 2011/09/12 | QUALITY SYMBOLS ∇=0 ∇=0 ∇=0 | GENERAL TOLERANCES (UNLESS SPECIFIED) mm INCH 4 PLACES ± --- ± --- 3 PLACES ± --- ± .01 2 PLACES ± 0.25 ± .014 1 PLACE ± 0.36 ± --- ANGULAR ± 1/2° | DIMENSION STYLE IN/MM DRAWN BY DATE DMF 1990/6/15 CHECKED BY DATE JRT 1990/6/15 APPROVED BY DATE FSMITH 2011/09/12 | SCALE 2:1 DESIGN UNITS METRIC THIRD ANGLE PROJECTION | MINI-FIT T.P.A. RIGHT ANGLE HEADER ASSEMBLY MOLEX INCORPORATED SDA-30070-**** SHEET NO. 1 OF 4 |
| | DRAFT WHERE APPLICABLE MUST REMAIN WITHIN DIMENSIONS | SEE CHART | THIS DRAWING CONTAINS INFORMATION THAT IS PROPRIETARY TO MOLEX INCORPORATED AND SHOULD NOT BE USED WITHOUT WRITTEN PERMISSION | | | |
| | M6 | SIZE C | MATERIAL NO. DOCUMENT NO. | | | |
| | REV | DESCRIPTION | DESCRIPTION | | | |

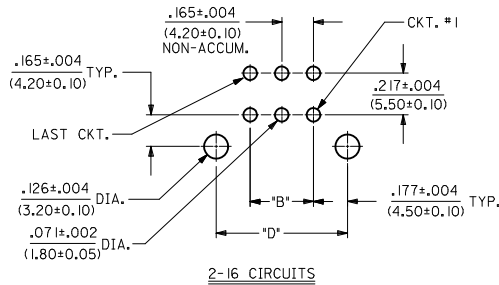
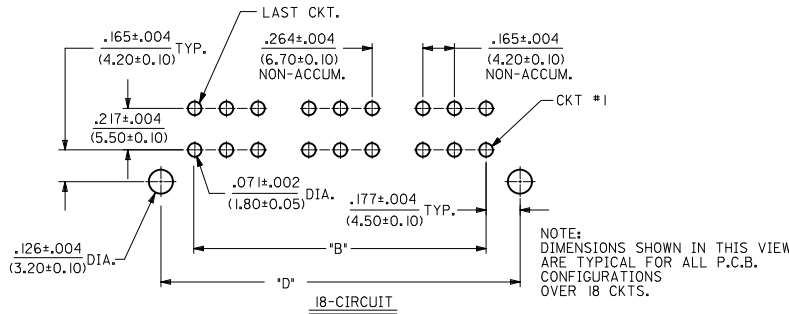
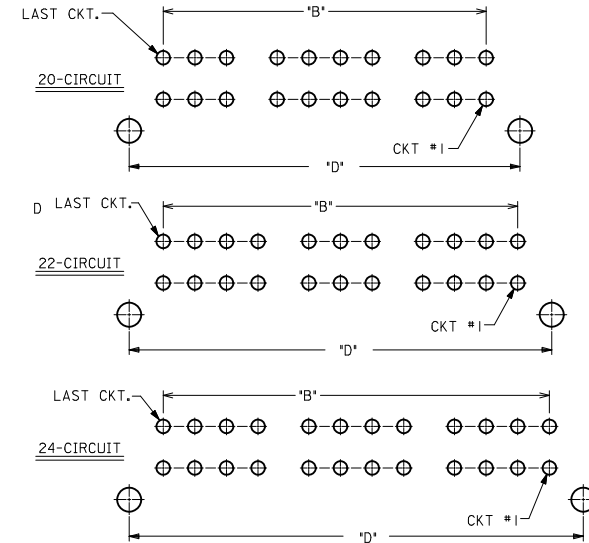
FLANGE MOUNT OPTION

| CKT. SIZE | ENG. NO. | DIM. 'A' | DIM. 'B' | DIM. 'C' | DIM. 'D' |
|-----------|------------|------------------|------------------|------------------|------------------|
| 2 | 30070-02A* | .213 (5.40) | — | .606 (15.40) | .354 (9.00) |
| 4 | 30070-04A* | .378 (9.60) | .165 (4.20) | .772 (19.60) | .520 (13.20) |
| 6 | 30070-06A* | .543 (13.80) | .331 (8.40) | .937 (23.80) | .685 (17.40) |
| 8 | 30070-08A* | .709 (18.00) | .496 (12.60) | 1.102 (28.00) | .850 (21.60) |
| 10 | 30070-10A* | .874 (22.20) | .661 (16.80) | 1.268 (32.20) | 1.016 (25.80) |
| 12 | 30070-12A* | 1.039 (26.40) | .827 (21.00) | 1.433 (36.40) | 1.181 (30.00) |
| 14 | 30070-14A* | 1.205 (30.60) | .992 (25.20) | 1.598 (40.60) | 1.346 (34.20) |
| 16 | 30070-16A* | 1.370 (34.80) | 1.157 (29.40) | 1.764 (44.80) | 1.512 (38.40) |
| 18 | 30070-18A* | 1.732 (44.00) | 1.520 (38.60) | 2.126 (54.00) | 1.874 (47.60) |
| 20 | 30070-20A* | 1.898 (48.20) | 1.685 (42.80) | 2.291 (58.20) | 2.039 (51.80) |
| 22 | 30070-22A* | 2.063 (52.40) | 1.850 (47.00) | 2.457 (62.40) | 2.205 (56.00) |
| 24 | 30070-24A* | 2.228 (56.60) | 2.016 (51.20) | 2.622 (66.60) | 2.370 (60.20) |



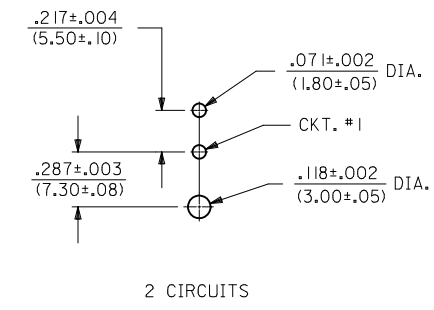
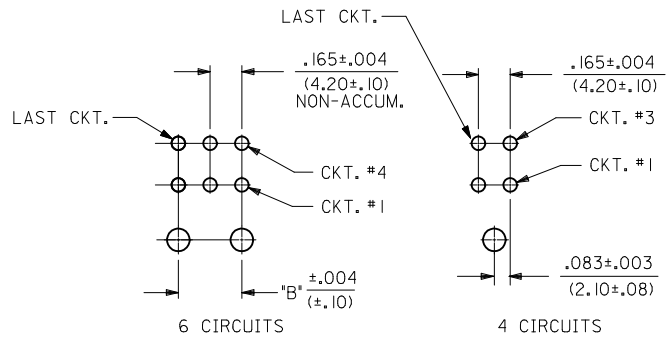
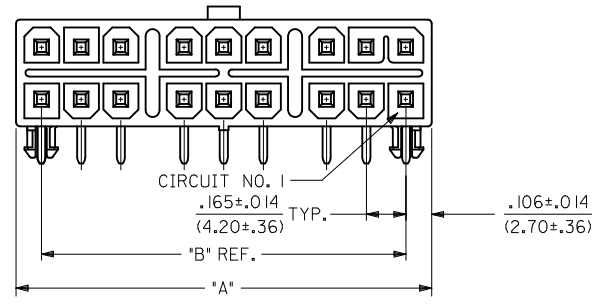
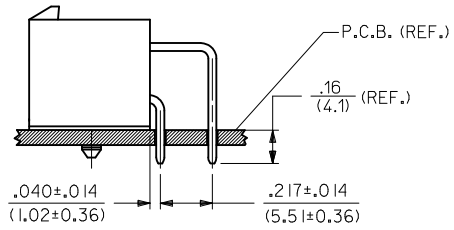
OPTION "A"
FLANGE MOUNT

RECOMMENDED P.C.BOARD LAYOUT
FOR .070/(1.78) MAX. THICK P.C. BOAR
VIEWED FROM COMPONENT
SIDE OF BOARD



| | | | | | | |
|---|----------------------|---------------------------------------|--|--------------------|---|------------------------|
| SEE SHEET 1 EC NO: UCP2012-0757 DRAWN: NGUYEN 2011/09/07 CHKD: J.BELL 2011/09/07 APPR: F.SMITH 2011/09/12 M6 | QUALITY SYMBOLS | GENERAL TOLERANCES (UNLESS SPECIFIED) | DIMENSION STYLE IN/MM | SCALE 2:1 | DESIGN UNITS METRIC | THIRD ANGLE PROJECTION |
| | ▽=0 | mm | DRAWN BY DMF | DATE 1990/6/15 | MINI-FIT T.P.A. RIGHT ANGLE HEADER ASSEMBLY MOLEX INCORPORATED | |
| | ▽=0 | INCH | CHECKED BY JRT | DATE 1990/6/15 | | |
| | ▽=0 | 4 PLACES ± --- ± --- | APPROVED BY FSMITH | DATE 2011/09/12 | | |
| | 3 PLACES ± --- ± .01 | MATERIAL NO. | DOCUMENT NO. | | | |
| | | 2 PLACES ± 0.25 ± .014 | SEE CHART | | SDA-30070-**** | SHEET NO. 2 OF 4 |
| | | 1 PLACE ± 0.36 ± --- | DRAFT WHERE APPLICABLE MUST REMAIN WITHIN DIMENSIONS | | THIS DRAWING CONTAINS INFORMATION THAT IS PROPRIETARY TO MOLEX INCORPORATED AND SHOULD NOT BE USED WITHOUT WRITTEN PERMISSION | |

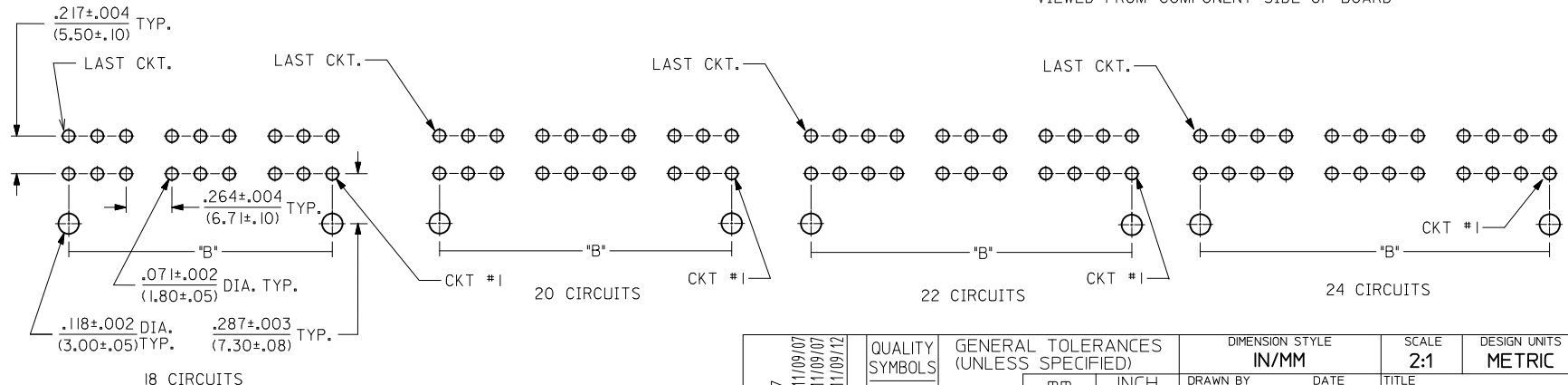
| PEG MOUNT OPTION | | | |
|------------------|-------------|------------------|------------------|
| CKT. SIZE | ENG. NO. | DIM. 'A' | DIM. 'B' |
| 2 | A30070-02B* | .213 (5.40) | — |
| 4 | A30070-04B* | .378 (9.60) | .165 (4.20) |
| 6 | A30070-06B* | .543 (13.80) | .331 (8.40) |
| 8 | A30070-08B* | .709 (18.00) | .496 (12.60) |
| 10 | A30070-10B* | .874 (22.20) | .661 (16.80) |
| 12 | A30070-12B* | 1.039 (26.40) | .827 (21.00) |
| 14 | A30070-14B* | 1.205 (30.60) | .992 (25.20) |
| 16 | A30070-16B* | 1.370 (34.80) | 1.157 (29.40) |
| 18 | A30070-18B* | 1.732 (44.00) | 1.520 (38.60) |
| 20 | A30070-20B* | 1.898 (48.20) | 1.685 (42.80) |
| 22 | A30070-22B* | 2.063 (52.40) | 1.850 (47.00) |
| 24 | A30070-24B* | 2.228 (56.60) | 2.016 (51.20) |



NOTE:
DIMENSIONS SHOWN IN THIS
VIEW ARE TYPICAL FOR ALL
P.C.B. CONFIGURATIONS FROM
6-16 CIRCUITS.

OPTION "B" PEG MOUNT

RECOMMENDED HOLE LAYOUT FOR .070/(1.78) MAX. P.C.BOARD
VIEWED FROM COMPONENT SIDE OF BOARD



NOTE:
DIMENSIONS SHOWN IN THIS VIEW ARE
TYPICAL FOR ALL P.C.B. CONFIGURATIONS
OVER 18 CKTS.

| | | | | | | | | | |
|---|--------------------------------------|--|----------------------|--------------------------|----------------------|--------------------|------------------------------|--|---------------------|
| SEE SHEET 1 EC NO: UCP2012-0757 DRAWN: NGUYEN 2011/09/07 CHKD: J.BELL 2011/09/07 APPR: FSMITH 2011/09/12 | QUALITY SYMBOLS ▽=0 ▽=0 ▽=0 | GENERAL TOLERANCES (UNLESS SPECIFIED) | | DIMENSION STYLE IN/MM | | SCALE 2:1 | DESIGN UNITS METRIC | THIRD ANGLE PROJECTION | |
| | | 4 PLACES ± --- ± --- | 3 PLACES ± --- ± .01 | 2 PLACES ± 0.25 ± .014 | 1 PLACE ± 0.36 ± --- | DRAWN BY DMF | DATE 1990/6/15 | TITLE MINI-FIT T.P.A. RIGHT ANGLE HEADER ASSEMBLY | |
| M6 | REV | ANGULAR ±1/2° | | APPROVED BY FSMITH | | DATE 2011/09/12 | MATERIAL NO. DOCUMENT NO. | | |
| | | DRAFT WHERE APPLICABLE MUST REMAIN WITHIN DIMENSIONS | | SEE CHART | | MOLEX INCORPORATED | | | SHEET NO. 3 OF 4 |
| THIS DRAWING CONTAINS INFORMATION THAT IS PROPRIETARY TO MOLEX INCORPORATED AND SHOULD NOT BE USED WITHOUT WRITTEN PERMISSION | | | | | | | | | |

