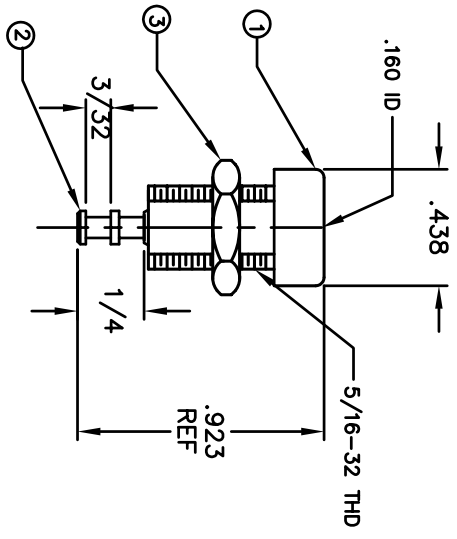


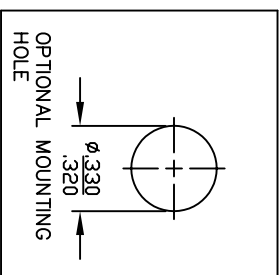
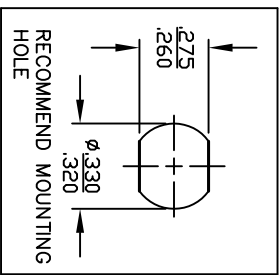
BILL OF MATERIALS				
DET.	QTY.	DESCRIPTION	MATERIAL	FINISH
1	1	BODY	LEXAN 940A	---
2	1	CONTACT	BRASS	TIN
3	1	NUT	BRASS	NICKEL

REVISIONS		REVISED DATE	APPR
SYM	DESCRIPTION		



BANANA JACK		
PART NO.	COLOR	
1499-101	WHITE	
1499-102	RED	
1499-103	BLACK	
1499-104	GREEN	
1499-105	BLUE	
1499-106	ORANGE	
1499-107	YELLOW	
1499-108	BROWN	
1499-112	VIOLET	
1499-113	GRAY	

ELECTRICAL RATINGS:
 CURRENT: 15 AMPS
 VOLTAGE: 1000 VOLTS



THIS DRAWING AND THE INFORMATION THEREIN IS THE PROPERTY OF ABBATRON, LLC. NO REPRODUCTION THEREOF IS PROHIBITED.

MATERIAL:	SEE BOM	FINISH:	SEE BOM	HEAT TREAT:	---
DIMENSIONAL TOLERANCES UNLESS OTHERWISE SPECIFIED	XX	XXX	XXXX		
FRACTIONS	---	---	---		
ANGLES	---	---	---		
SCALE	2:1				
SURFACE FINISH	125	002			

TITLE:	1499 SERIES
BANANA JACK	
INSULATED, DOUBLE-"D" STYLE	
DRAWN:	T. LORD DATE: 2/8/08
CHECKED:	T. LORD DATE: 2/8/08
APPROVED:	T. LORD DATE: 2/8/08

ABBATRON	
Electronic Connectors and Hardware	
632 Arch Street, Meadville, Pa. 16335	
SIZE	B
DRAWING NUMBER	SD-1499
ISSUE	-