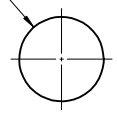
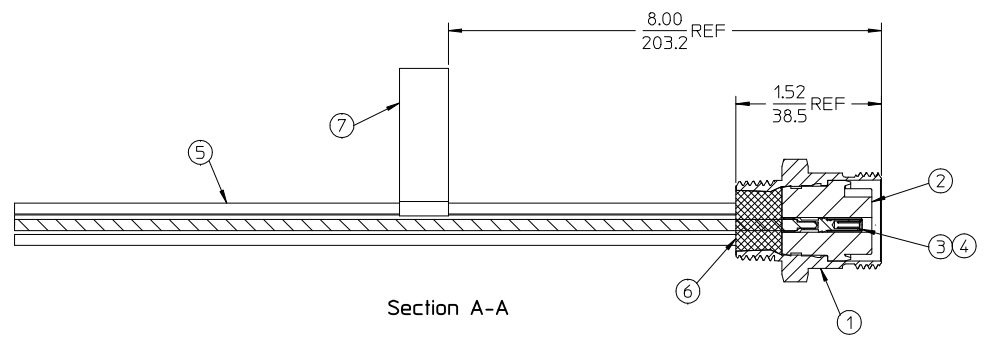
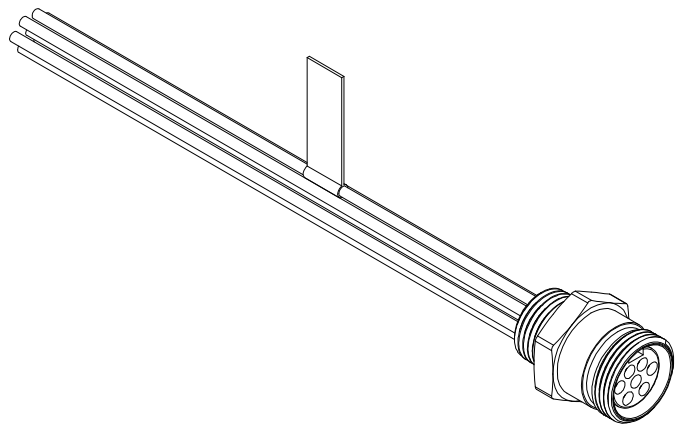
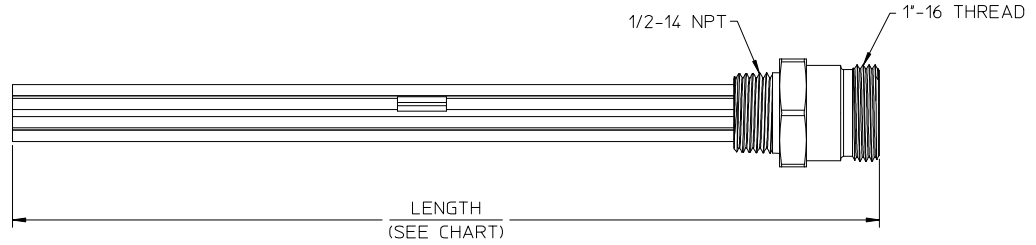


MATERIAL NO.	ENGINEERING NO.	LENGTH
1300140037	2R7004A20A120	12' +.75-0 [305mm +19.0-0]
1300140042	2R7004A20F060	6'0' +2.19-0 [1.8M +55.6-0]

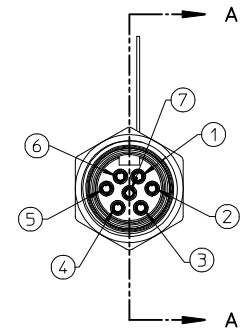
φ .88
22.4



REF. KNOCK-OUT HOLE



Section A-A



1	WHITE/BLACK
2	BLACK
3	WHITE
4	RED
5	ORANGE
6	BLUE
7	GREEN/YELLOW-GND

NOTES:

- MATERIAL: SEE TABLE
- FINISHES: SEE TABLE
- MATES WITH: 7/C MINI-CHANGE CORD ASSY.
- ELECTRICAL SPECIFICATIONS:
VOLTAGE RATING: 600V AC/DC
CURRENT RATING: 8 AMPS
- RoHS COMPLIANT

ITEM	QTY.	DESCRIPTION	MATERIAL	FINISH
7	1	LABEL	PLASTIC FILM	BLACK/YELLOW
6	1	POTTING	EPOXY	
5	7	WIRE, 16 AWG (UL 1015)	PVC INSULATED	SEE WIRE DIAGRAM
4	7	SOCKET SLEEVE	ST.STEEL	
3	7	CONTACT SOCKET	BRASS	GOLD PLATED
2	1	INSERT	PVC	YELLOW
1	1	RECEPTACLE SHELL	ZINC ALLOY	E-COAT, BLACK

RELEASED	EC NO: MNA2009-0813	2009/06/09	2009/06/10
DRWN:BRUPERT	CHKD:BRUPERT	APPR:JFMURPHY	DESCRIPTION
A	REV		

QUALITY SYMBOLS
▽=0
▽=0

GENERAL TOLERANCES (UNLESS SPECIFIED)	
mm	INCH
4 PLACES ± .005	± .0005
3 PLACES ± .005	± .0005
2 PLACES ± .005	± .0005
1 PLACE ± 0.3	± .012
ANGULAR ± 1/2°	

DRAFT WHERE APPLICABLE
MUST REMAIN
WITHIN DIMENSIONS

DIMENSION STYLE	
IN/MM	
DRAWN BY	DATE
BRUPERT	06/05/2009
CHECKED BY	DATE
B. WOODMAN	06/05/2009
APPROVED BY	DATE
J. MURPHY	06/05/2009
MATERIAL NO.	
SEE CHART	
SIZE	
THIS DRAWING CONTAINS INFORMATION THAT IS PROPRIETARY TO MOLEX INCORPORATED AND SHOULD NOT BE USED WITHOUT WRITTEN PERMISSION	

SCALE	DESIGN UNITS	THIRD ANGLE PROJECTION
1:1	INCH	☉
TITLE		
MINI-CHANGE RECEPTACLE FEMALE, 7 POLE 1/2 IN NPT		
MOLEX INCORPORATED		
DOCUMENT NO.	SHEET NO.	
SD-130014-006	1 OF 1	