

DWG. IO.
SD-35725-002

SIMILAR ITEM

PROJECT NO.

c

b

DO NOT SCALE DRAWING
DIMENSION IN METRIC

8 7 6 5 4 3 2 1

F

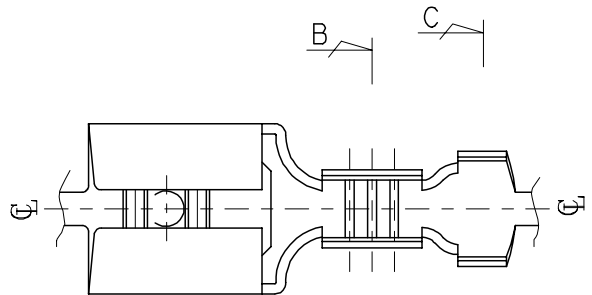
E

D

C

B

A

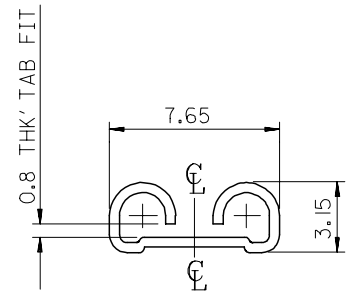
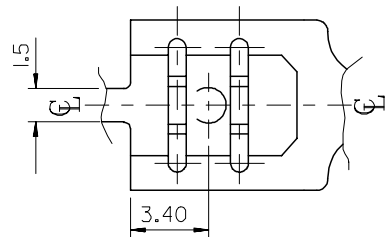
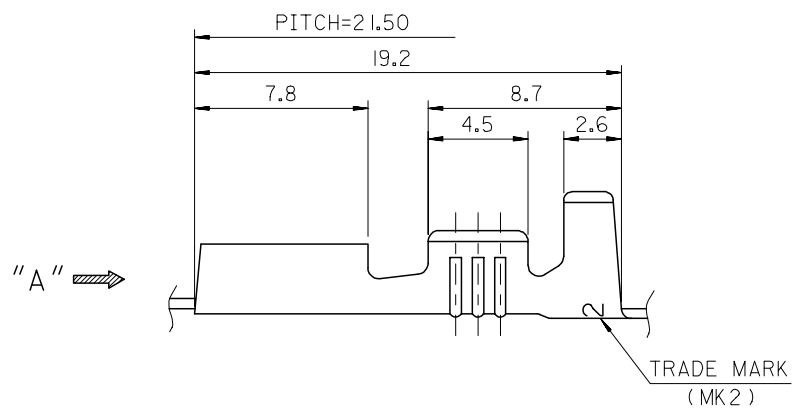
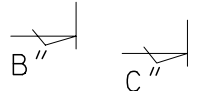


- NOTES
1. MATERIAL : BRASS , 0.45mm THICKNESS
 2. PART NO. AND FINISH

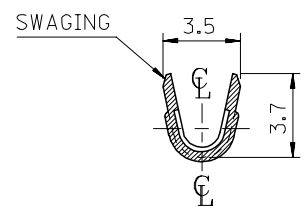
PART NO.	MATERIAL NO.	FINISH	TRADE MARK
35725-2400	357252400	UNPLATED	MK2
35725-2411	357252411	POST PLATED TIN	^H MK2
35725-2410	357252410	POST PLATED TIN	MK2

H (TRADE MARK) : HIGH TENSION TIN-PLATED PRODUCT

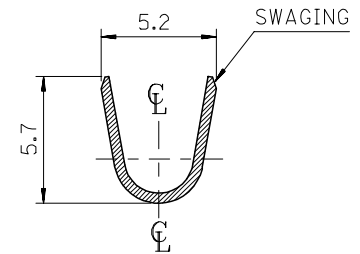
3. APPLICABLE WIRE RANGE : AWG #18 - #14
4. RECOMMENDED LENGTH OF WIRE STRIP IS 6.0-6.8mm



VIEW "A"



SEC' : B-B''



SEC' : C-C''

REVISED EC NO.: K0R2005-0198 DRWN: J.B.JIN 05/04/29 CHK: W.Y.YANG APPR: C.W.LEE	DESCRIPTION MAJOR = 0 CRITICAL = 0	QUALITY SYMBOLS		GENERAL TOLERANCES: (UNLESS SPECIFIED)	SCALE 4.5 : 1	DESIGN UNITS <input checked="" type="checkbox"/> MM <input type="checkbox"/> INCH	THIRD ANGLE PROJECTION	DIMENSIONS: <input type="checkbox"/> MM <input type="checkbox"/> INCH <input type="checkbox"/> MM ONLY <input checked="" type="checkbox"/> MM ONLY		SHT	REV
		4 PLACES	±0.	±.	DRAWN BY & DATE J.S.KANG 93/07/02	TITLE: .250 SLIP-ON RECEPTACLE (SLOT TYPE)					
		3 PLACES	±0.	±.	CHECKED BY & DATE B.K.CHOI 93/07/02	MATERIAL NO. SEE TABLE					
		2 PLACES	±0.20	±.	APPROVED BY & DATE C.W.LEE 93/07/02	DRAWING NO. SD-35725-002					
1 PLACE	±0.30	±.	ANGULAR: ± °	CAD FILENAME S7252400.dgn	MATERIAL NO. SEE TABLE		DRAWING NO. SD-35725-002		SHEET NO. 1 OF 1		
C2	REV	DRAFT WHERE APPLICABLE MUST REMAIN WITHIN DIMENSIONS			THIS DRAWING CONTAINS INFORMATION THAT IS PROPRIETARY TO MOLEX INCORPORATED AND SHOULD NOT BE USED WITHOUT WRITTEN PERMISSION.						SIZE B

8 7 6 5 4 3 2 1

MX-A3