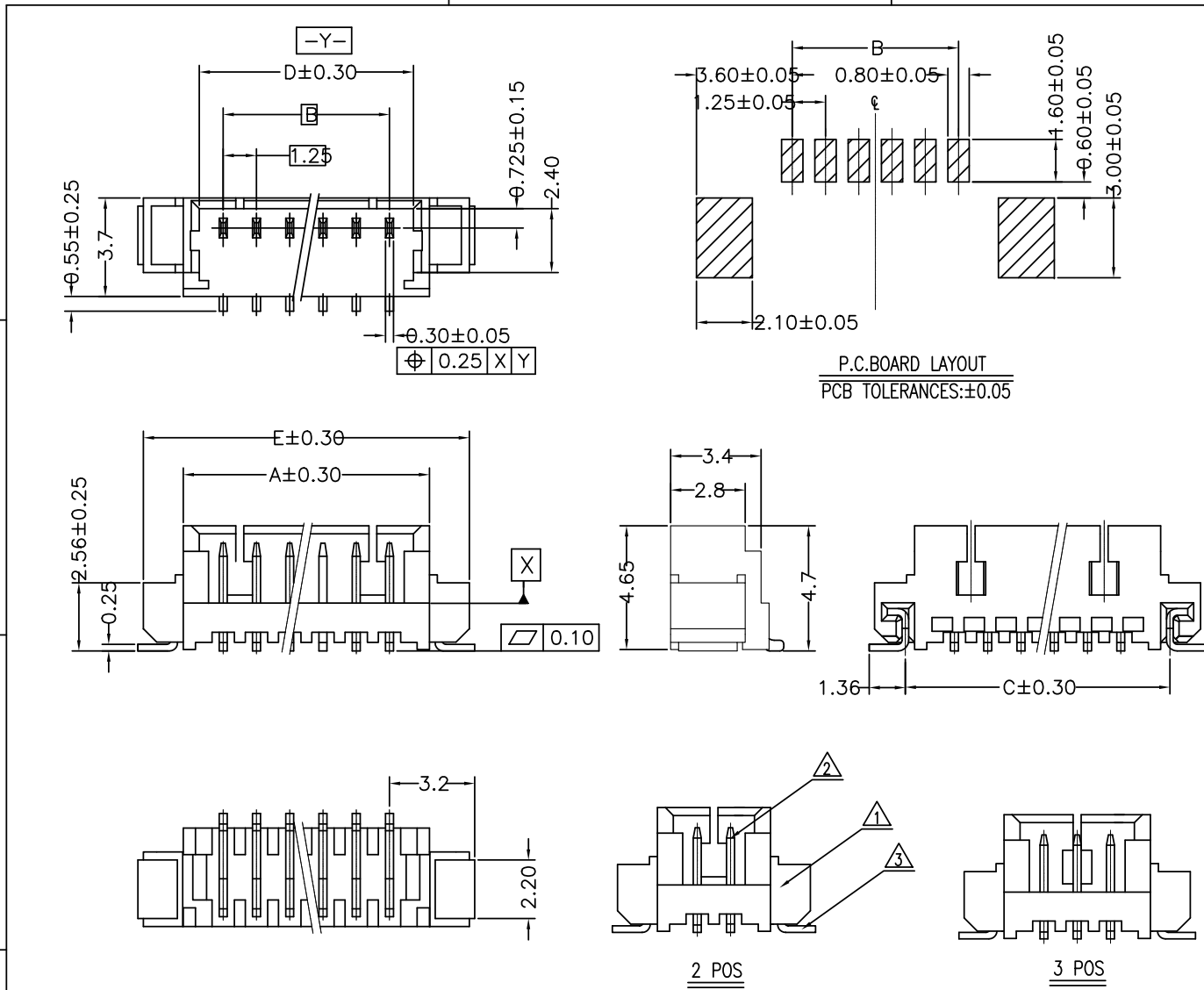




Copyright FCI.



NOTES
1. SPECIFICATIONS
 Current Rating: 1A AC,DC
 Voltage Rating: 125V AC,DC
 Temperature Range: -40°C ~ +105°C
 Contact Resistance: 20mΩ Max.
 Insulation Resistance: 100MΩ Min.
 Withstanding Voltage: 500V AC/minute
2. Material & finish:
 Housing: Natural Thermoplastic, UL94V-0
 Contact and metal hold-down: Phosphor Bronze
 Plating of contact: Matte Tin or gold plating over Nickel
 Plating of metal hold-down: Matte Tin over Nickel
3. Crimping application hand tool P/N: 10118656-1000
4. Ordering Information & Dimensions:
 10114828- X X X XX LF
 Material _____ LF: See note A
 1: LCP _____ pin counts from 02-15
 Plating _____
 0: Matte Tin _____ Packaging
 1: Gold Flash _____ 1: Tape & Reel

Part No.	Dimensions					
	POS	A	B	C	D	E
10114828-xxx02LF	2	4.25	1.25±0.10	4.94	3.05	7.25
10114828-xxx03LF	3	5.50	2.50±0.10	6.19	4.30	8.50
10114828-xxx04LF	4	6.75	3.75±0.10	7.44	5.55	9.75
10114828-xxx05LF	5	8.00	5.00±0.10	8.69	6.80	11.00
10114828-xxx06LF	6	9.25	6.25±0.15	9.94	8.05	12.25
10114828-xxx07LF	7	10.50	7.50±0.15	11.19	9.30	13.50
10114828-xxx08LF	8	11.75	8.75±0.15	12.44	10.55	14.75
10114828-xxx09LF	9	13.00	10.00±0.15	13.69	11.80	16.00
10114828-xxx10LF	10	14.25	11.25±0.20	14.94	13.05	17.25
10114828-xxx11LF	11	15.50	12.50±0.20	16.19	14.30	18.50
10114828-xxx12LF	12	16.75	13.75±0.20	17.44	15.55	19.75
10114828-xxx13LF	13	18.00	15.00±0.20	18.69	16.80	21.00
10114828-xxx14LF	14	19.25	16.25±0.20	19.94	18.05	22.25
10114828-xxx15LF	15	20.50	17.50±0.20	21.19	19.30	23.50

Note A: The LF means RoHS compliance, the housing will withstand exposure to peak temperature 260 degree C for 5 sec in the IR re-flow process.

ITEM	MATERIAL	DESCRIPTION
①	THERMOPLASTIC HIGH TEMPERATURE	HOUSING
②	COPPER ALLOY	TERMINAL
③	COPPER ALLOY	HOLD DOWN

rev	ecn no	dr	date
A	T10-0145	J H	12/1/10
B	ELX-N-007665	J.Z	2011-11-01
C	ELX-N-007764	J.Z	2011-11-04
D	ELX-N-011318	J.Z	2012-04-15

www.fciconnect.com		surface 6.4 ISO 1302	tolerance std ISO 406 ISO 1101	projection MM
		TOLERANCES UNLESS OTHERWISE SPECIFIED		MM
Dr	JASON HSU	12/1/10	ANGULAR	LINEAR
Eng	JASON HSU	12/1/10	0.X	±0.25
Chr	GARY HSIEH	12/1/10	0.XX	±0.15
Appr	JOSEPH HSIA	12/1/10	0.XXX	-
Product family			WTB	size A4
Spec ref			ECN ELX-N-011318	
title			10114828	
catalog no			CUSTOMER	
			sheet 1 of 1	

REV F - 2006-04-17