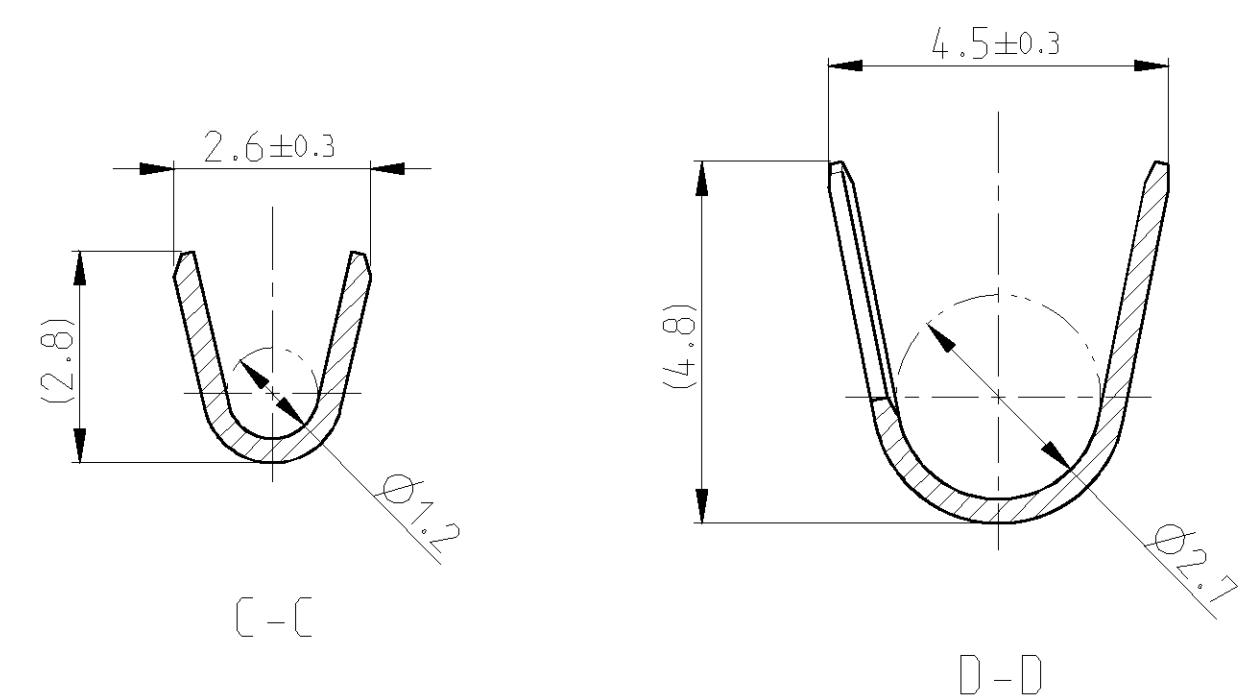
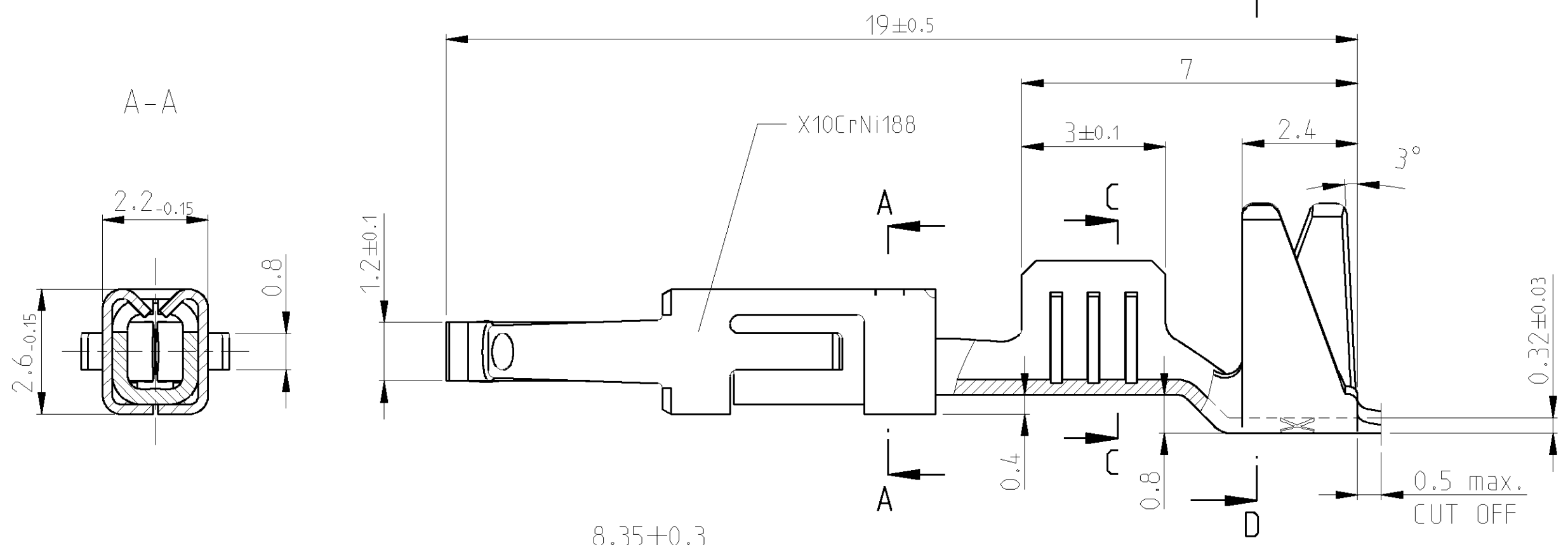


THIS DRAWING IS UNPUBLISHED. RELEASED FOR PUBLICATION 2008  
 © COPYRIGHT 2008 ALL RIGHTS RESERVED.

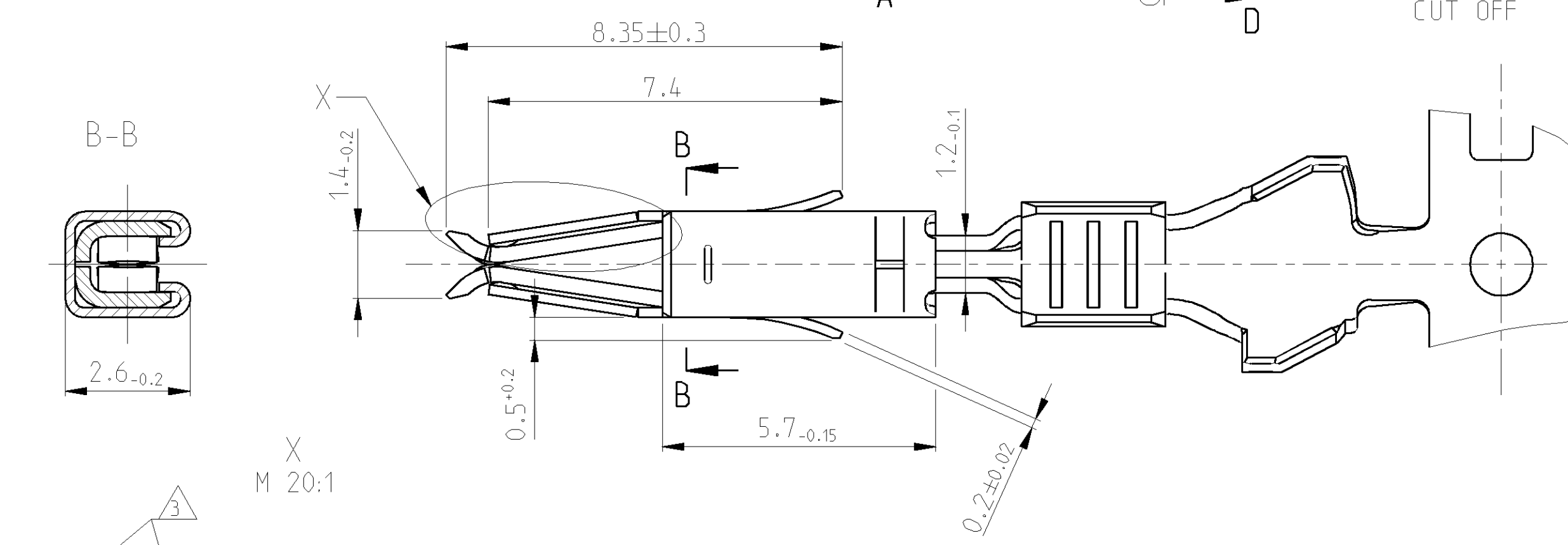
| REVOLUTION |      | REVISIONS |     |  |           |      |      |
|------------|------|-----------|-----|--|-----------|------|------|
| LOC        | DIST | P         | LTR | DESCRIPTION                              | DATE      | DWN  | APVD |
| A1         | -    |           |     |  |           |      |      |
|            |      | N1        |     | DRAWING ADAPTED                          | 06APR2009 | Abr  | Brun |
|            |      | N2        |     | REVISED PER ECO-11-005150                | 18MAY2011 | RK   | HMR  |
|            |      | N3        |     | NEW VERISON OF GOLD CONTACTS PRERMITTED. | 18MAY2011 | Kirs | Mair |
|            |      | N4        |     | OPTIONAL to note 8 TTD added. (area A3)  | 29JUN2011 | Kirs | Mair |

7 KONVENTIONELL

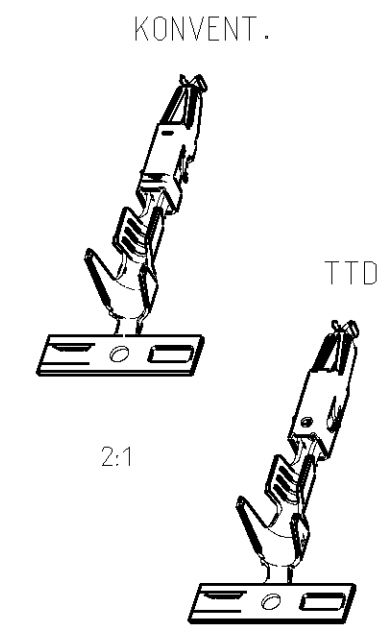
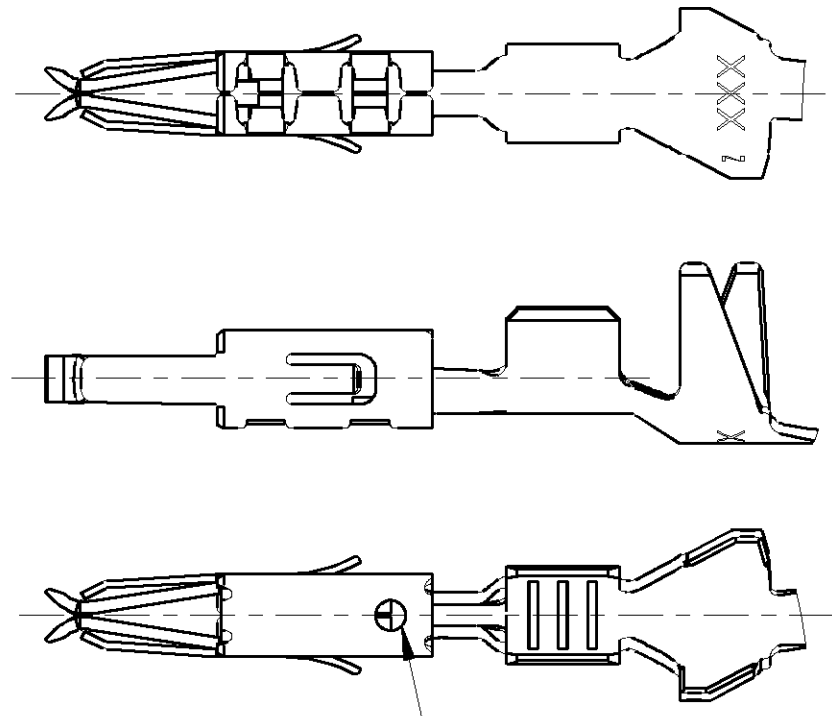
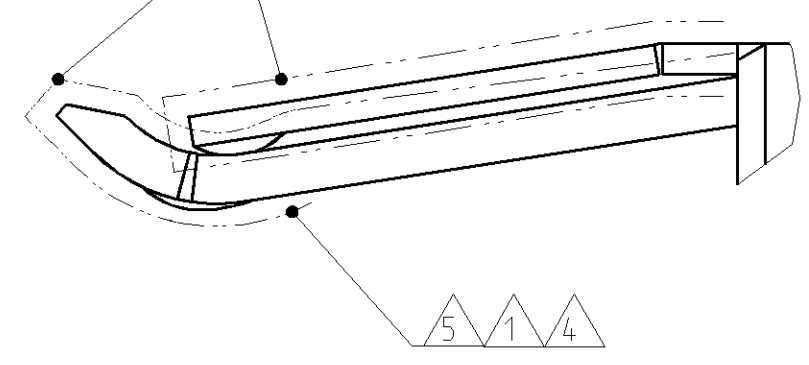


NOTES  
Bemerkungen

- 1 SELECTIVE GOLD PLATED MIN. 0.8µm OVER NI  
selektiv vergoldet 0.8µm ueber Ni
- 2 TIN PLATED MIN. 0.2µm OVER NI  
verzinkt 0.2µm ueber Ni
- 3 CONTACT SURFACE SEL. GOLD PLATED MIN. 0.8µm OVER NI  
CANTILEVER SPRING COMPLETELY GOLD PLATED ON BOTH SIDES  
sel. vergoldet auf der Kontaktobenseite 0.8µm min. ueber Ni  
Ueberfeder komplett auf beiden Seiten vergoldet
- 4 GAL. TIN PLATED MIN. 1.0µm OVER NI  
gal. verzinkt 1.0µm ueber Ni
- 5 SELECTIVE GOLD PLATED MIN. 1.27µm OVER NI  
selektiv vergoldet 1.27µm min. ueber Ni
- 6 WIRE RANGE : 0.5 - 1.0 mm<sup>2</sup>  
INSULATION-Ø: 2.8 mm (SINGLE WIRE SEAL)  
Drahtgroessenbereich: 0.5 - 1.0 mm<sup>2</sup>  
Isolations-Ø: 2.8 mm (Einzeldichtung)



8 TWO TRACK DIE  
M 5:1



OPTIONAL  
wahlweise

| VERSION | LP NO    | SURFACE / Oberflaeche | MATERIAL | PART NO  | REV |
|---------|----------|-----------------------|----------|----------|-----|
| 8 7     | 963711-7 | 5 2                   | CuFe2    | 962876-7 | B   |
| 8 7     | 963711-6 | 3 4 2                 | CuSn4    | 962876-6 | N   |
| 8 7     | 963711-5 | 1 2                   | CuFe2    | 962876-5 | N   |
| 8 7     | 963711-3 | 1 2                   | CuSn4    | 962876-3 | N   |
| 8       | 963711-2 | PRETIN / vorverzinkt  | CuFe2    | 962876-2 | N   |
| 8       | 963711-1 | PRETIN / vorverzinkt  | CuSn4    | 962876-1 | N   |

THIS DRAWING IS A CONTROLLED DOCUMENT.

DWN R.Hofer 05-JAN-89  
 CHK L.Nix 05-APR-89  
 APVD M.Bleicher 25-JUN-08

STE TE Connectivity

MICRO TIMER 2 CONTACT  
 WITH DOUBLE LOCKING LANCE  
 mit doppelter Rastfeder

PRODUCT SPEC 108-18386  
 APPLICATION SPEC 114-18081  
 WEIGHT 0.3 g

SIZE A2 CAGE CODE 00779 DRAWING NO. C-962876 RESTRICTED TO -  
 CUSTOMER DRAWING SCALE 10:1 SHEET 1 OF 1 REV N4