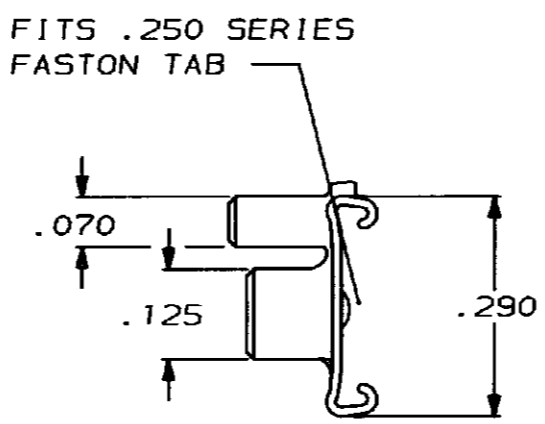
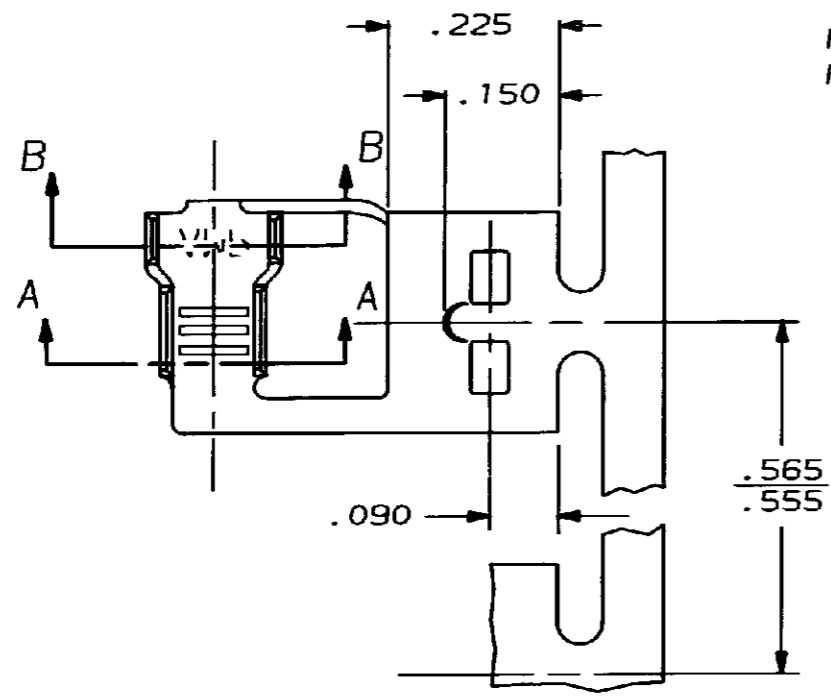


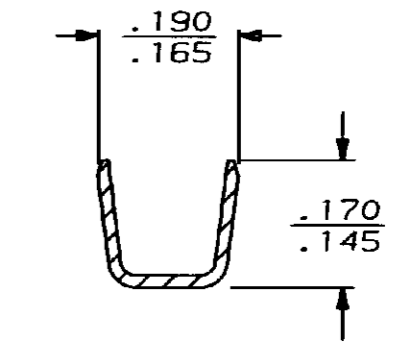
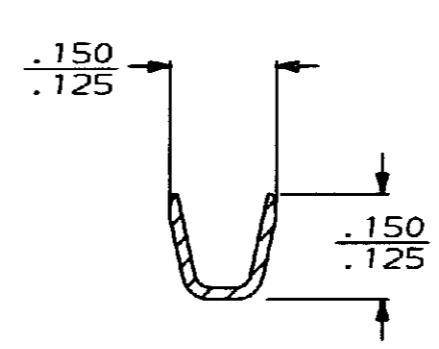
DRAWING MADE IN THIRD ANGLE PROJECTION

THIS DRAWING IS UNPUBLISHED. RELEASED FOR PUBLICATION .19  
 © COPYRIGHT 19 BY AMP INCORPORATED, HARRISBURG, PA. ALL INTERNATIONAL RIGHTS RESERVED. AMP PRODUCTS MAY BE COVERED BY U. S. AND FOREIGN PATENTS AND/OR PATENTS PENDING.

LOC	DIST	P	F	ZONE	LTR	DESCRIPTION	DATE	APPROVED
AF	50				S	REVISED AF-7659	10/18/85	JR/CM



1 - CONTINUOUS STRIP ON REELS.



SECTION A-A

SECTION B-B

INSUL RANGE	WIRE SIZE	TAB THK ±.001	FINISH	MATERIAL	PART NO
.090-.140	18-14	.032	TIN	.016 PH BRONZE	60290-3
.090-.140	18-14	.032	TIN	.016 4M BRASS	60290-2
.090-.140	18-14	.032	---	.016 4M BRASS	60290-1

TYPE	WIDTH	STRIP LENGTH ±.015	TYPE	WIDTH	±.002 HEIGHT	WIRE
F	.155	.188	F	.110	.073	14
					.064	16
					.058	18
INSUL BARREL CRIMP			WIRE BARREL CRIMP			

UNLESS OTHERWISE SPECIFIED DIMENSIONS ARE IN INCHES TOLERANCES ON: 2 PL DEC ± 3 PL DEC ± .015 ANGLES ±	DR JR RUTH 10/4/85 CHK G YETTER 10/4/85 APPD C MEYERS 10/4/85 APPD R KUZO 10/4/85 PRODUCT SPEC APPLICATION SPEC 114-2079 WEIGHT
--	---

AMP INCORPORATED Harrisburg, Pa. 17105		
NAME .250 SERIES FLAG FASTON RECEPTACLE		
SIZE B	FSCH NO 00779	DRAWING NO 60290
SCALE NTS	SHEET 1 OF 1	

AMP 1470-15 REV 10-84  
 18 OCT 1984 07:46:44 AMP1340 45128402912176-045712114-F15200-0204-250-PL

CUSTOMER DRAWING