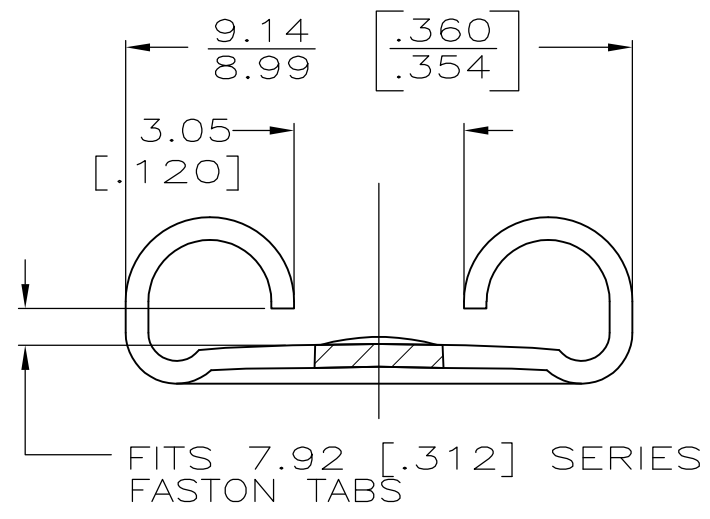
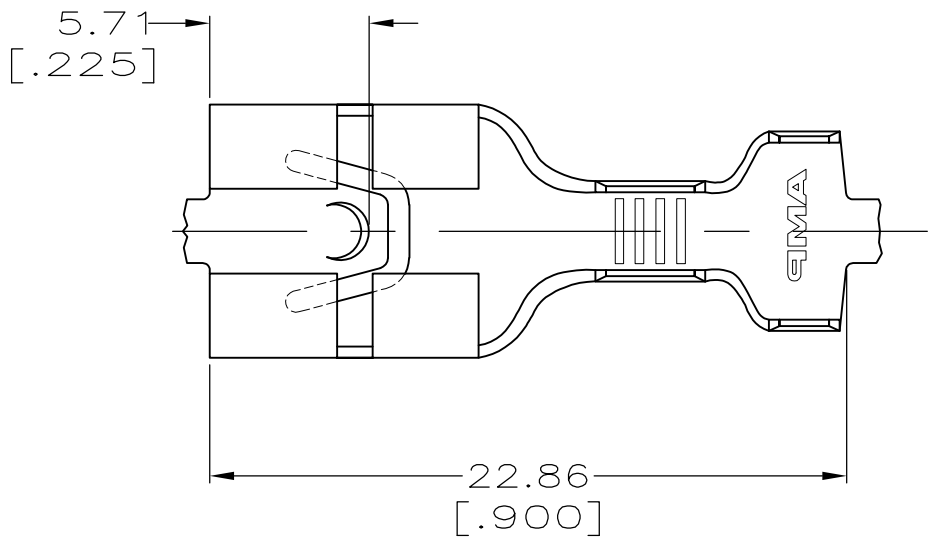
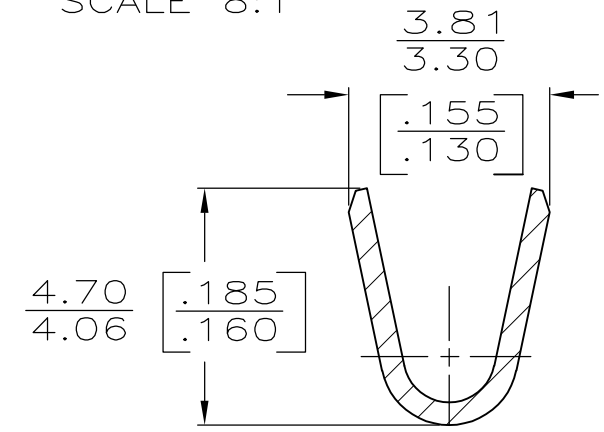
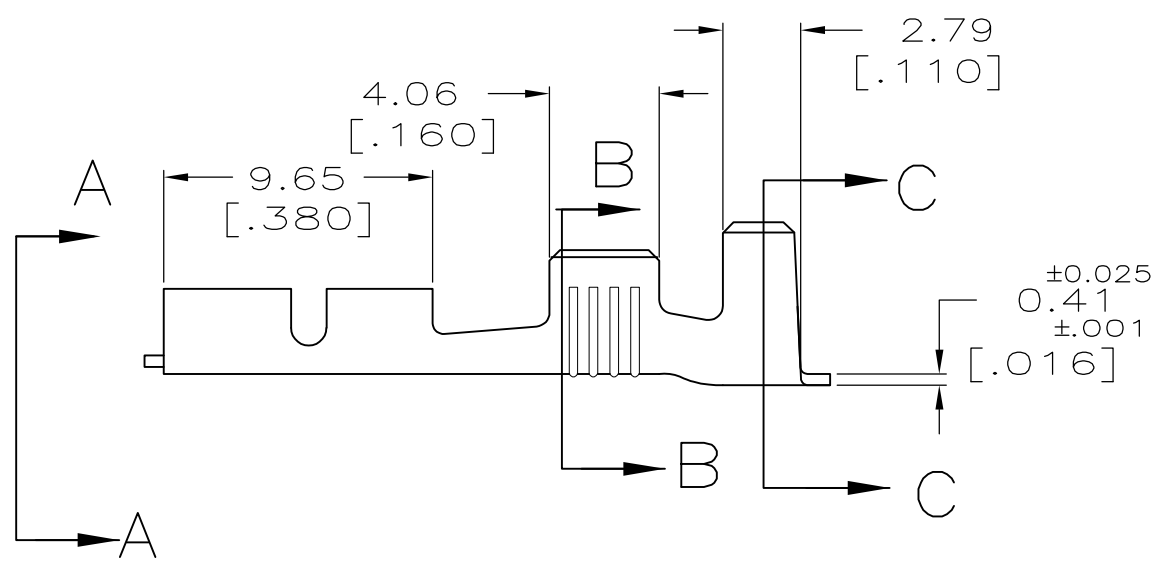


LOC		DIST		REVISIONS				
P	LTR	DESCRIPTION			DATE	DWN	APVD	
AF	50	G	REVISED PER ECR-11-018063			26DEC11	KH	PD

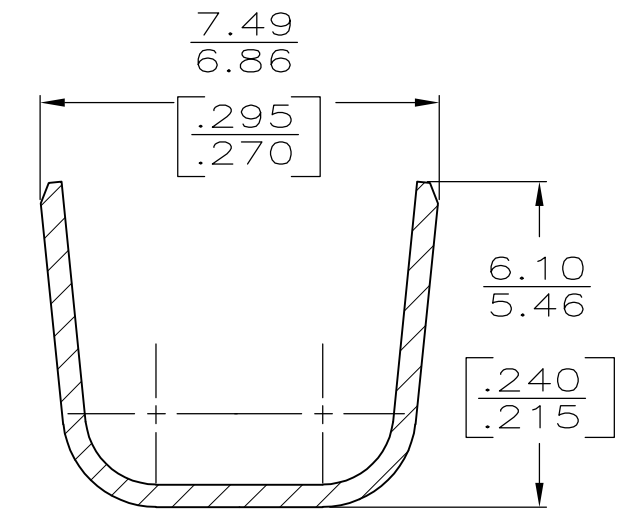


- CONTINUOUS STRIP ON REELS.
- MATING TAB THK TO BE 0.81 ± 0.025 [.032 ± .001].
- WIRE SIZE IS [#16-#12] AWG.
- INSULATION RANGE IS 4.06 OR (2) 3.30 [.160 OR (2) .130].

VIEW A-A
SCALE 8:1



SECTION B-B
SCALE 8:1



SECTION C-C
SCALE 8:1

F	6.35 [.250]	5.59 [.220]	F	3.05 [.120]	1.75 [069]	1.3mm ² [16]
					1.96 [077]	2.0mm ² [14]
					2.29 [090]	3.0mm ² [12]
					1.96 [077]	1.3 + 0.8mm ² [16 + 18]
					2.11 [083]	TWO 1.3mm ² [TWO #16'S]
					1.85 [073]	TWO 0.8mm ² [TWO #18'S]
TYPE	WIDTH	STRIP LENGTH ±0.38 ±[.015]	TYPE	WIDTH	HEIGHT	WIRE
INSUL BARREL CRIMP			WIRE BARREL CRIMP			

THIS DRAWING IS A CONTROLLED DOCUMENT.

DIMENSIONS:	TOLERANCES UNLESS OTHERWISE SPECIFIED:
mm [INCHES]	
	0 PLC ± -
	1 PLC ± -
	2 PLC ± 0.25 [010]
	3 PLC ± -
	4 PLC ANGLES ± -
MATERIAL	FINISH
H04 BRASS	SEE TABLE

DWN	JR RUTH	9/29/92
CHK	MS FEHER	9/29/92
APVD	C MEYERS	9/29/92
PRODUCT SPEC		
APPLICATION SPEC	114-2036	
WEIGHT	-	
CUSTOMER DRAWING		

-		63677-2	
TIN		63677-1	
FINISH		PART NO	
TE Connectivity			
RECEPTACLE, FASTON, 7.92 [.312] SERIES			
SIZE	CAGE CODE	DRAWING NO	RESTRICTED TO
A3	00779	C-63677	-
SCALE 4:1		SHEET 1 OF 1	REV G