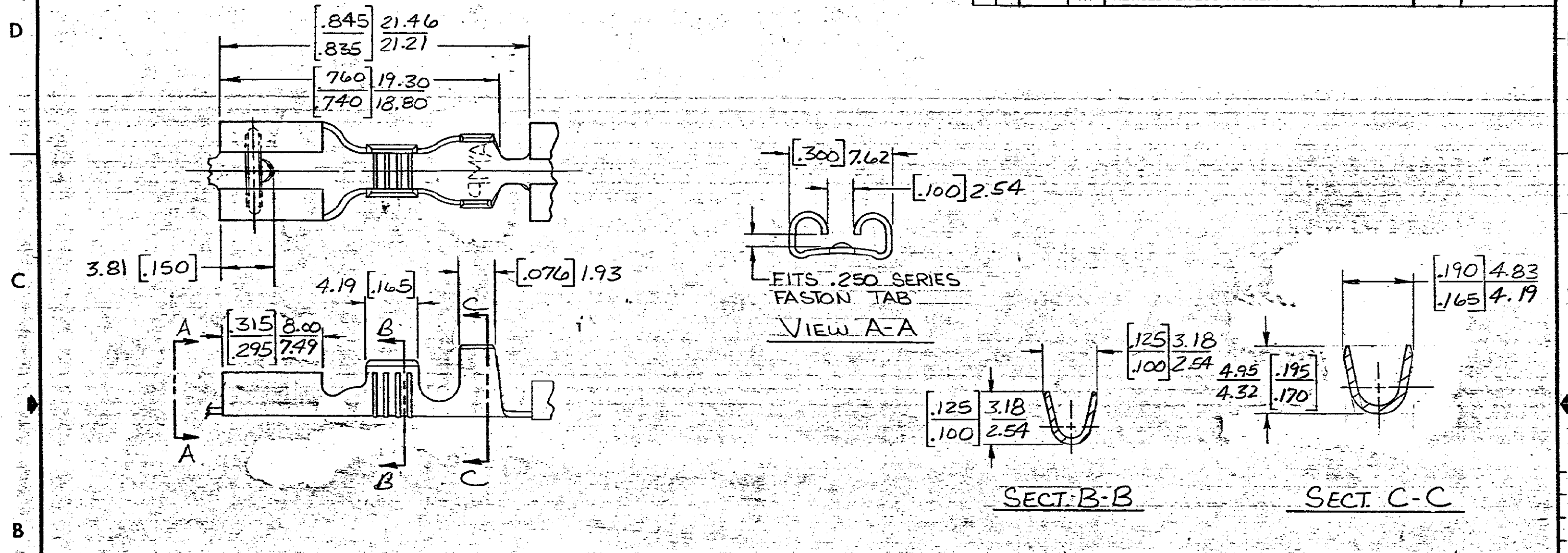


THIS DRAWING IS UNPUBLISHED. RELEASED FOR PUBLICATION . 19  
 © COPYRIGHT BY

		1		LOC	AF	DIST	50
REVISIONS							
P	F	ZONE	LTR	DESCRIPTION		DATE	APPROVED
			R1	REVISED PER ECO-11-005294		08APR11	HMR



- DIMENSIONS IN BRACKETS ARE IN INCHES  
 2-CONTINUOUS STRIP ON REELS

TiN	[.016] 0.41 STL.	[.090-.130] 2.29-3.30	[22-18] 0.3-0.8mm <sup>2</sup>	[.032] 0.81	42510-4
NICKEL	[.016] 0.41 STL.	[.090-.130] 2.29-3.30	[22-18] 0.3-0.8mm <sup>2</sup>	[.032] 0.81	42510-3
TiN	[.016] 0.41 BR.	[.090-.130] 2.29-3.30	[22-18] 0.3-0.8mm <sup>2</sup>	[.032] 0.81	42510-2
NONE	[.016] 0.41 BR.	[.090-.130] 2.29-3.30	[22-18] 0.3-0.8mm <sup>2</sup>	[.032] 0.81	42510-1
FINISH	MATERIAL	INSULATION RANGE	WIRE SIZE	[.001] 0.025 TAB THK	PART NO.

UNLESS OTHERWISE SPECIFIED DIMENSIONS ARE IN INCHES. M.M. TOLERANCES ON DECIMALS ±.015] 0.38 ANGLES ±

MATERIAL  
SEE ABOVE

FINISH  
SEE ABOVE

CONTRACT NO  
BR *NR Rutz* 10/28/83  
CHK *G Yeller* 11/3/83  
APPD *C. Myers* 11-7-83  
APPD *V. K...* 11-16-83  
DSGN APPD  
OTHER APPD

**TE** TE Connectivity

NAME **250 SERIES FASTON RECEPTACLE**

SIZE **B** FSCM NO **00779** DRAWING NO **42510**

SCALE SHEET

**METRIC**