

D

C

B

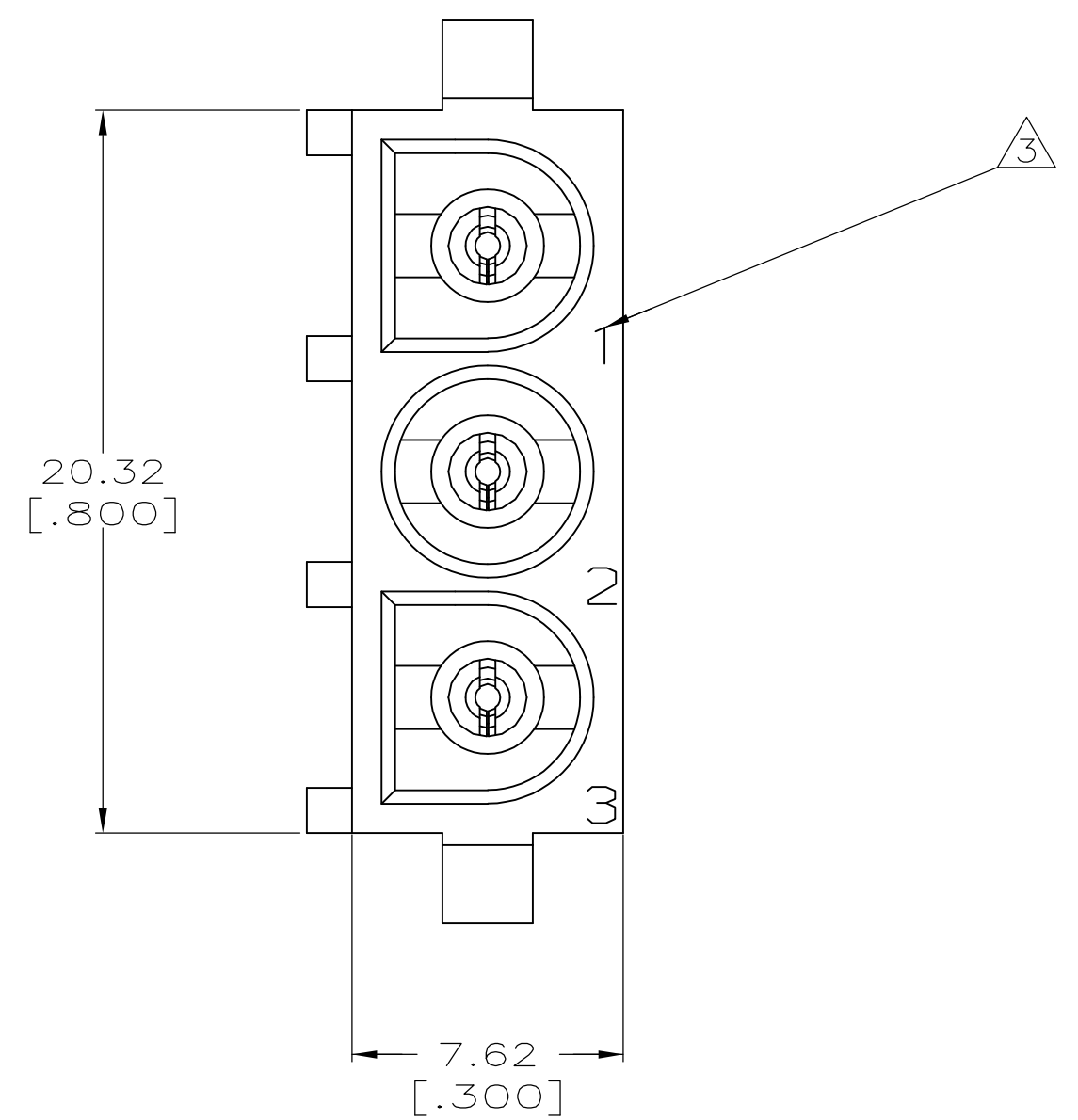
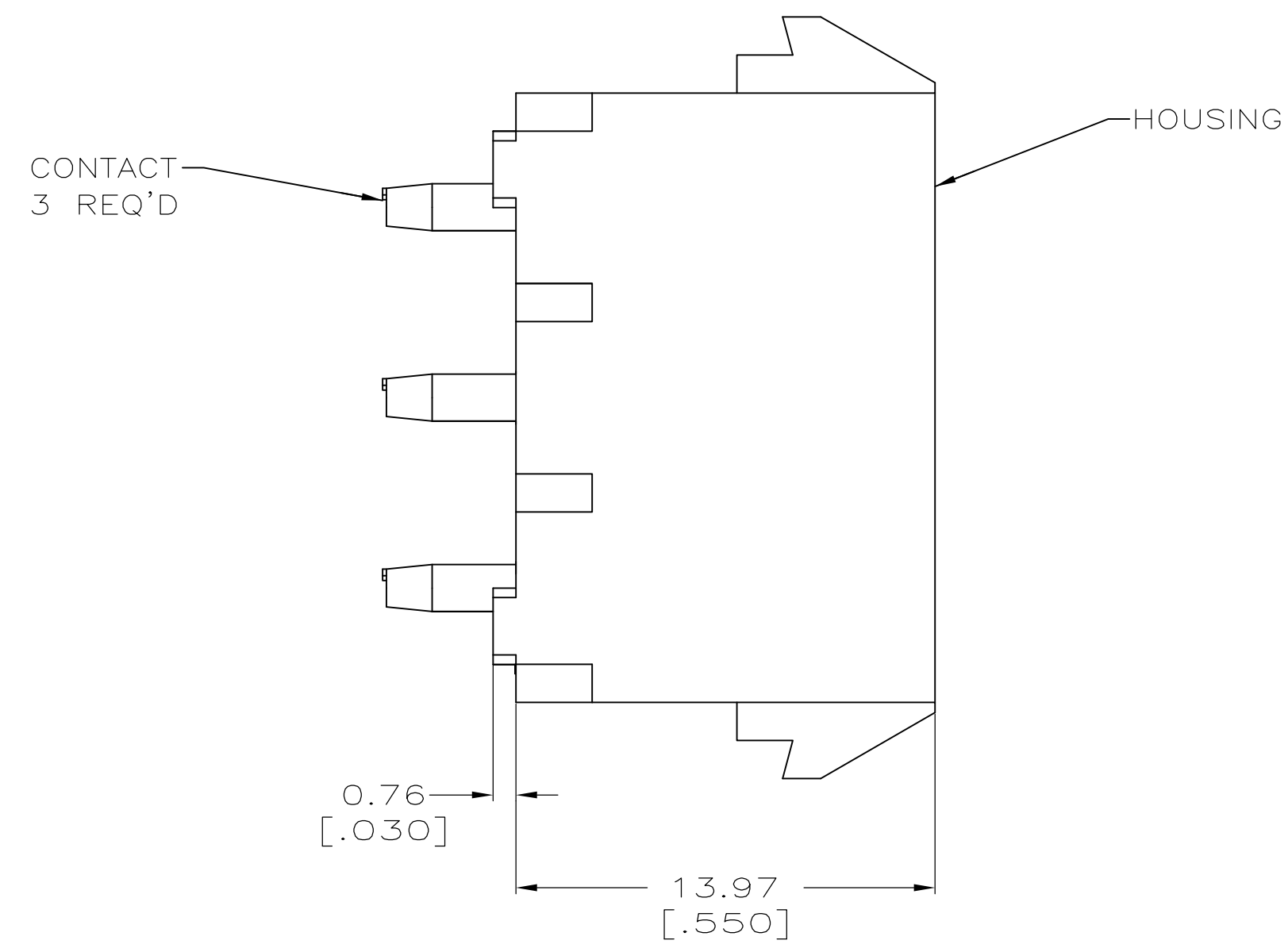
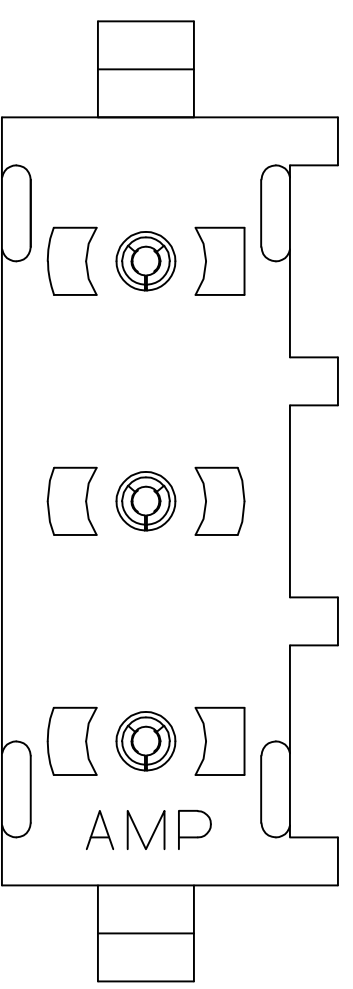
A

D

C

B

A

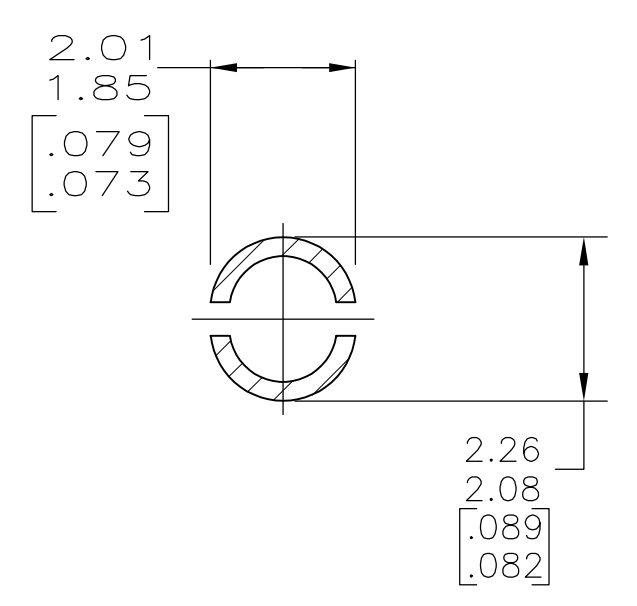
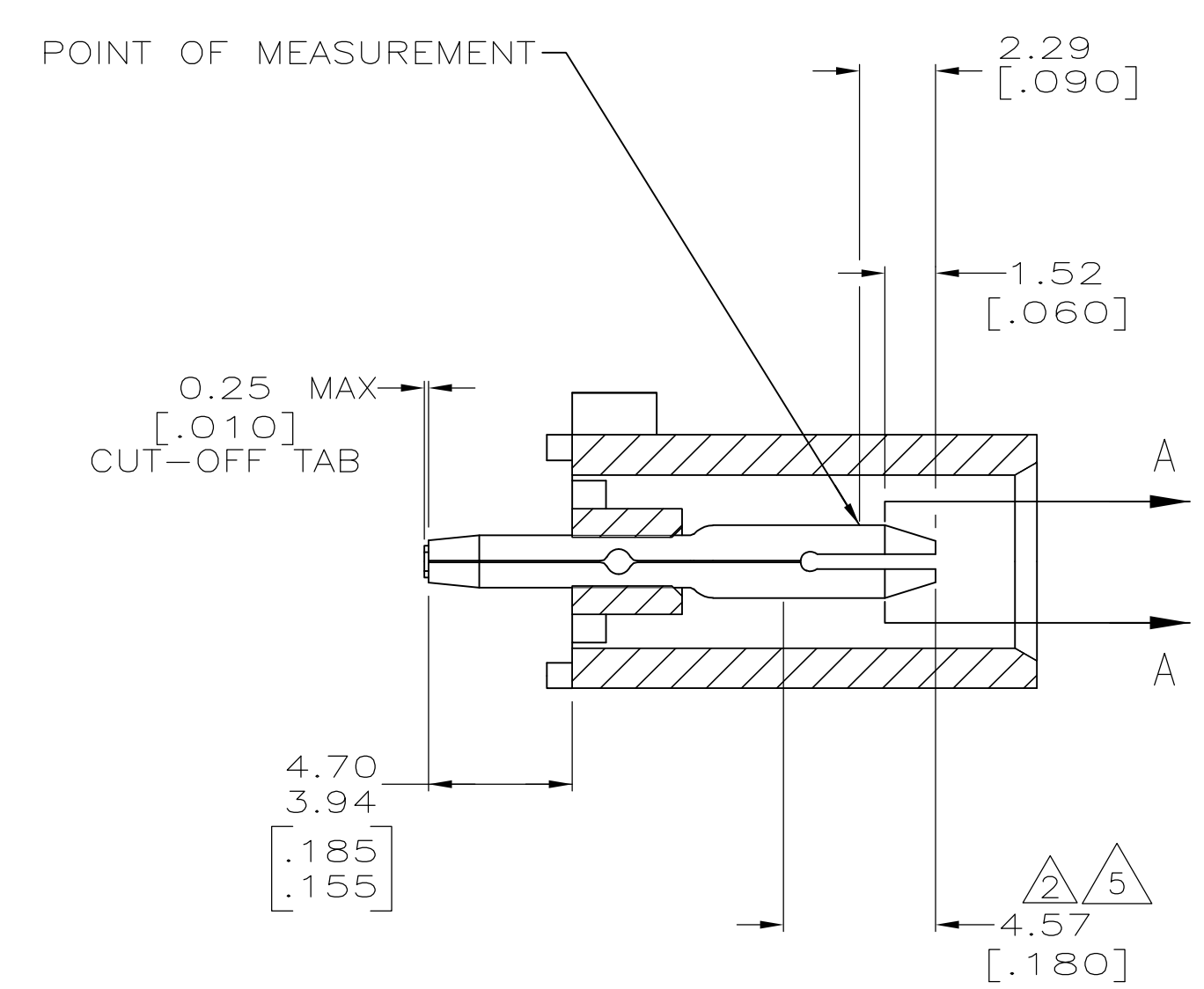


1. PARTS COMPLY TO AMP SOLDERABILITY SPECIFICATION 109-11-3.
- △

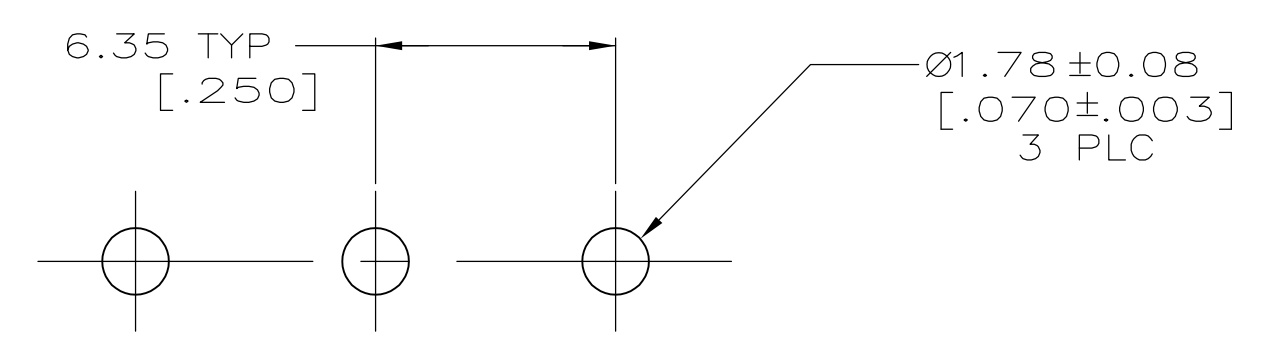
CONTACT IS PLATED OVERALL WITH 0.00127 [.000050] NICKEL, THEN 0.00076 [.000030] GOLD OVER CONTACT LENGTH INDICATED AND MATTE TIN-LEAD ON SOLDER TAIL END.
- △

CIRCUIT IDENTIFICATION CHARACTERS ARE ADJACENT TO THE INDICATED CAVITIES, BUT LOCATION AND ORIENTATION MAY DIFFER FROM PRINT.
4. DIMENSIONS IN BRACKETS ARE IN INCHES.
- △

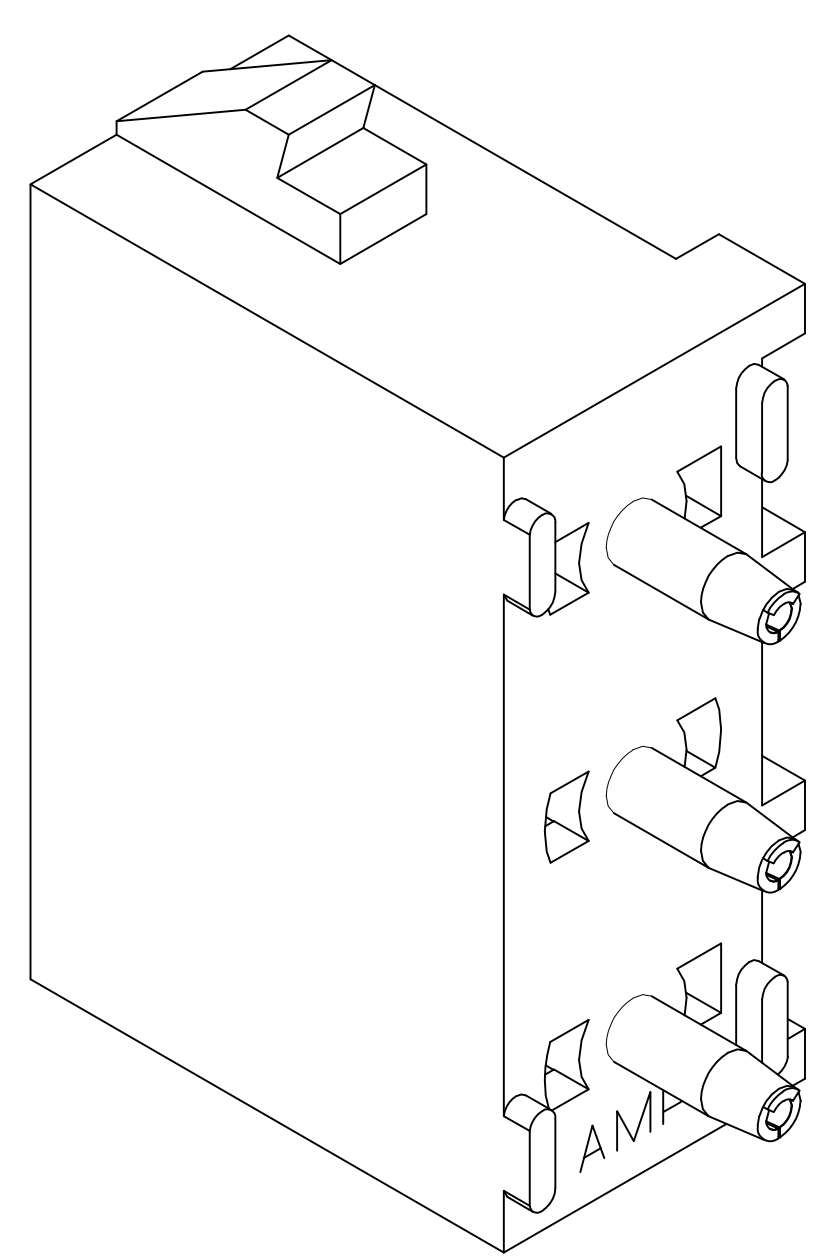
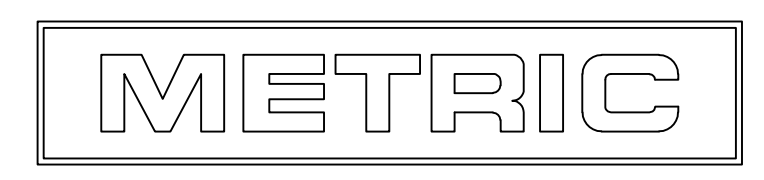
CONTACT IS PLATED OVERALL WITH 0.00127 [.000050] NICKEL, THEN 0.00076 [.000030] GOLD OVER CONTACT LENGTH INDICATED AND MATTE TIN ON SOLDER TAIL END.



SECTION A-A  
SCALE 10:1





RECOMMENDED MOUNTING HOLE PATTERN  
FOR 1.57 [.062] THICK P.C. BOARD



3-DIMENSIONAL MODEL  
NTS

PHOSPHOR BRONZE, PRE-TIN	NYLON, UL94V-0, BLUE	1-350789-6
PHOSPHOR BRONZE, PRE-TIN	NYLON, UL94V-0, RED	1-350789-2
PHOSPHOR BRONZE, GOLD <div>△</div> 5	NYLON, UL94V-0, WHITE	350789-3
PHOSPHOR BRONZE, GOLD <div>△</div> 2	NYLON, UL94V-0, WHITE	350789-2
PHOSPHOR BRONZE, PRE-TIN	NYLON, UL94V-0, WHITE	350789-1
PIN CONTACT MATERIAL AND FINISH	HOUSING MATERIAL	PART NUMBER

THIS DRAWING IS A CONTROLLED DOCUMENT.		DWN S. CARPENTER	23JUN2003	<div>TE Connectivity</div>	
DIMENSIONS: mm [INCHES]		CHK S. RIDGILL	23JUN2003		
TOLERANCES UNLESS OTHERWISE SPECIFIED:		APVD S. RIDGILL	23JUN2003	PIN HEADER ASSEMBLY, 3 CIRCUIT, UNIVERSAL MATE-N-LOK(TM)	
		PRODUCT SPEC			
0 PLC ±		APPLICATION SPEC		SIZE	
1 PLC ±		CAGE CODE			
2 PLC ± 0.13 [.005]		DRAWING NO		RESTRICTED TO	
3 PLC ±		WEIGHT			
4 PLC ±		CUSTOMER DRAWING		A1 00779 C-350789	
ANGLES ± 0°30'		SCALE 5:1		SHEET 1 OF 1	
FINISH		REV R2			
MATERIAL SEE TABLE					
SEE TABLE					