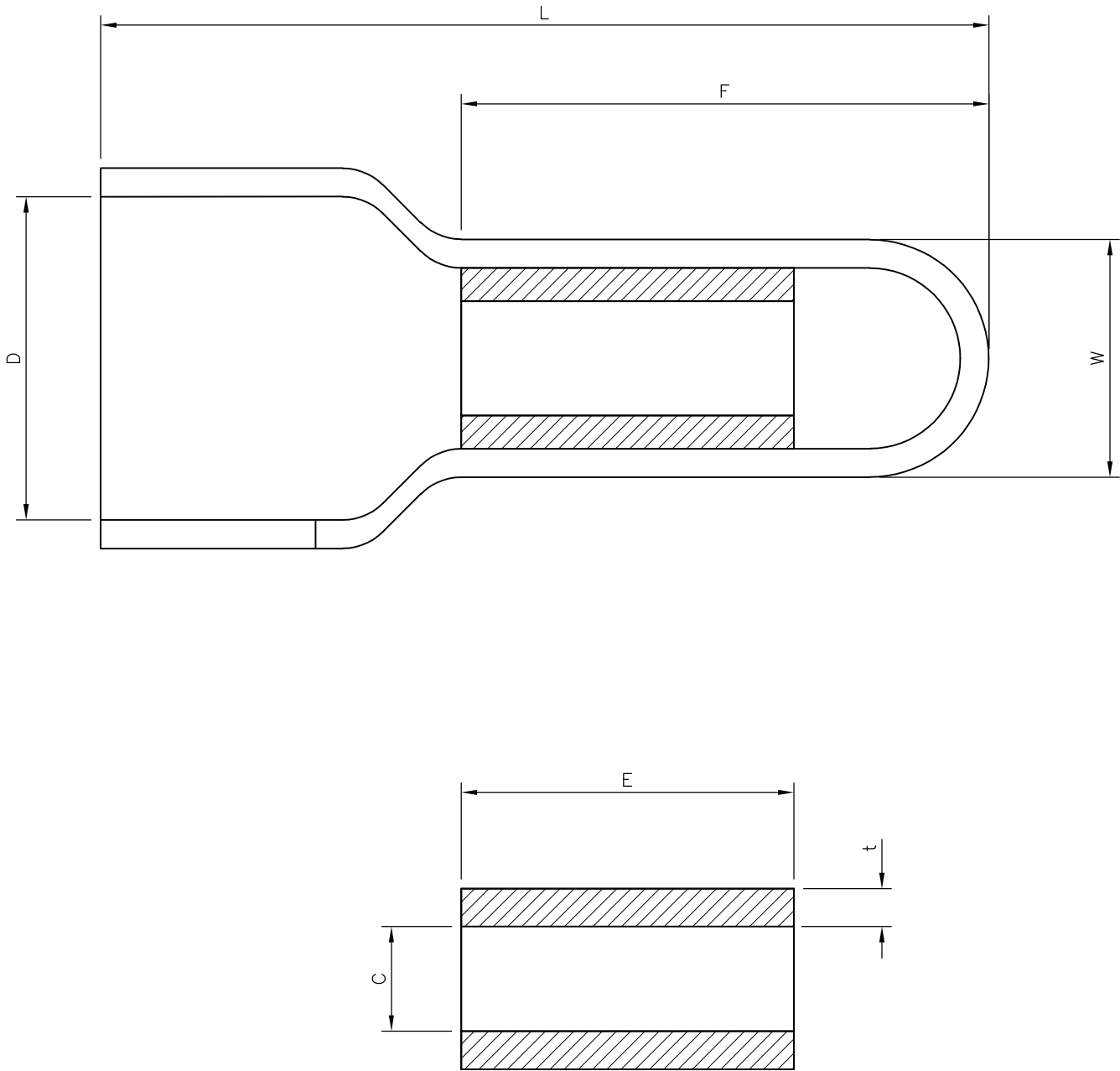


LOC	DIST	REVISIONS					
		P	LTR	DESCRIPTION	DATE	DWN	APVD
E	B		B	ECR-09-006447	30/03/09	AM	JS



- NOTES:
- FOR TECHNICAL DATA REFER TO YOUR LOCAL TYCO ELECTRONICS SALES OFFICE.
 - ALL DIMENSIONS ARE NOMINAL FOR REFERENCE ONLY UNLESS OTHERWISE STATED.
 - FOR PACKAGING DETAILS SEE SHEET 2.
 - MATERIAL: BODY - COPPER
SLEEVE - PVC (K65), 94V-0

2-1838205-0	0.5mmsq - 1.5mmsq 22-16(AWG)	2.4x14mm STANDARD ENTRY	END CONNECTOR (INSULATED)	2000	1000	5.00	18.10	10.60	6.00	7.00	0.35	2.70	0.5mmsq - 1.5mmsq 22-16(AWG)	END CONNECTOR (INSULATED)	2-1838205-0
1-1838205-0				3500	100										1-1838205-0
STOCK NUMBER	PACKING LABEL DESCRIPTION LINE 3	PACKING LABEL DESCRIPTION LINE 2	PACKING LABEL DESCRIPTION LINE 1	INNER CARTON QTY	QTY	W (±0.20)	L (+0.20 -0	F (±0.20)	D (±0.20)	E (±0.20)	t (±0.05)	C (±0.10)	WIRE SIZE (mmsq) & (AWG)	DESCRIPTION	PART No
						DIMENSIONS									

THIS DRAWING IS A CONTROLLED DOCUMENT.

DIMENSIONS: mm

MATERIAL -

TOLERANCES UNLESS OTHERWISE SPECIFIED:

0 PLC ± 0.5
1 PLC ± 0.2
2 PLC ± 0.1
3 PLC ± 0.015
4 PLC ± -
ANGLES ± -
FINISH -

DWN K.Raghunandan 10AUG05
CHK S. Parlow 12/04/07
APVD F. Wheeler-King 12/04/07

PRODUCT SPEC -
APPLICATION SPEC -
WEIGHT -

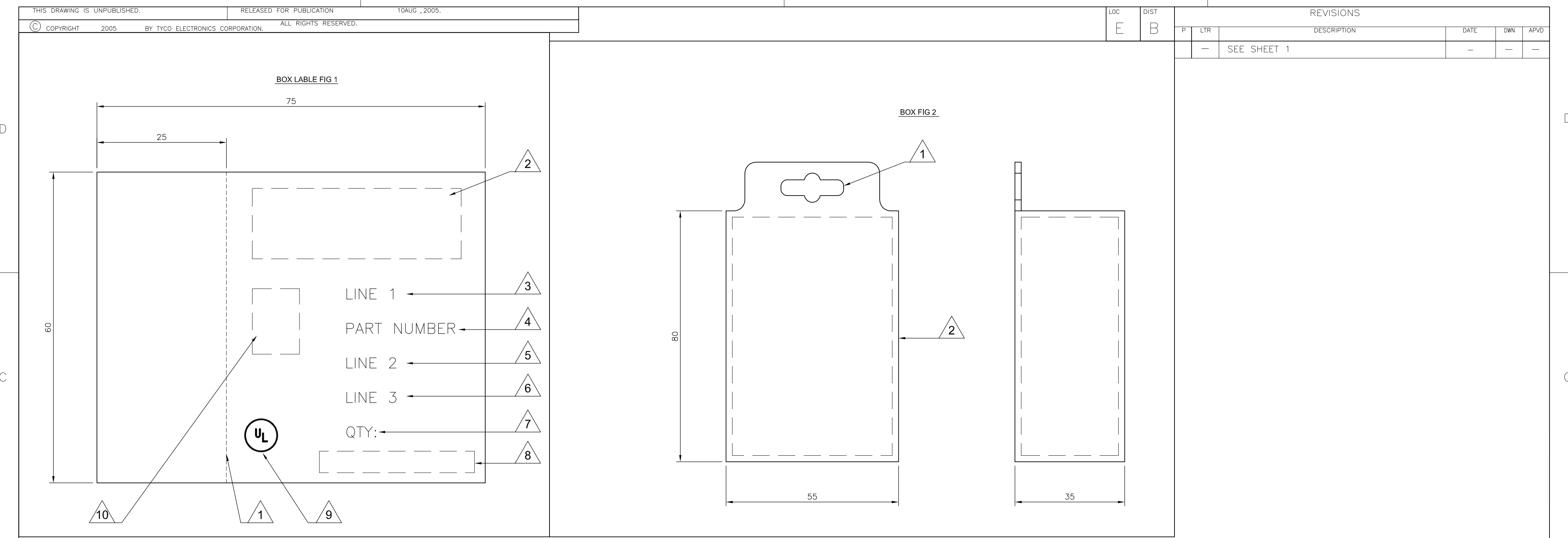
CUSTOMER DRAWING

Tyco Electronics Corporation
Bideford, UK, EX39 4HE

NAME EURO-CRIMP INSULATED END CONNECTOR
0.5mmsq - 1.5mmsq / 22-16 AWG RANGE

SIZE A2
CAGE CODE 00779
DRAWING NO C=1838205
RESTRICTED TO -

SCALE NTS
SHEET 1 OF 2
REV B



- LABEL NOTES:

1. PERFORATED LINE:

DOTTED LINE TO BE ALIGNED WITH OPENING EDGE & FOLDED TO LEFT SIDE OF BOX.

2. LOGO:

USE LATEST REVISION OF TYCO COMPANY LOGO.

3. LINE1:

SEE SHEET 1, USE TEXT FROM COLUMN PACKAGING LABEL DESCRIPTION LINE 1.

4. PART NUMBER:

FOR 1--0 & 2--0 USE TYCO PART NUMBER.
1--0 = 1-1838205-0
2--0 = 2-1838205-0

5. LINE 2:

SEE SHEET 1, USE TEXT FROM COLUMN PACKAGING LABEL DESCRIPTION LINE 2.

6. LINE 3:

SEE SHEET 1, USE TEXT FROM COLUMN PACKAGING LABEL DESCRIPTION LINE 3.

7. QTY:

SEE SHEET 1, USE NUMBER FROM THE COLUMN QTY.

8. EAN BARCODE.

USE LATEST TYCO BARCODE SUPPLIED.
1--0 = TYCO BARCODE
2--0 = TYCO BARCODE

9. UL:

WHERE APPLICABLE USE UL LOGO, SEE SHEET 1.

10. PRODUCT PICTURE:

A PRODUCT PICTURE IS REQUIRED.
- BOX NOTES:

1. EURO SLOT:

TO BE POSITIONED TO CENTRE ON FRONT COVER.

2. BOX HINGE:

FRONT COVER TO BE HINGED ON RIGHT SIDE.

3. SPECIFICATION:

COVER TO BE FREE FROM POSSIBLE WARPING & CAPABLE OF BEING RE-SEALED MIN 100 TIMES.

4. LABEL:

CORRECT CUSTOMER BOX LABEL TO BE POSITIONED ON THE FRONT COVER WITH THE PERFORATED EDGE ON THE LEFT HAND SIDE.
- PACK SPECIFICATION:

1. CLEAR PLASTIC BOX:

PART NUMBER 1--0 TO BE PACKED 100 PARTS PER CLEAR PLASTIC BOX (FIG2) WITH THE CORRECT CUSTOMER LABEL (FIG1), 35 CLEAR PLASTIC BOXES OF THE SAME PART NUMBER ARE TO BE PACKED INTO A SUITABLE INNER CARTON BOX.

2. CLEAR PLASTIC BAG:

PART NUMBER 2--0, USE A SUITABLE CLEAR PLASTIC BAG FOR A 1000 PARTS, POSITION AN APPROPRIATE LABEL AS IN FIG1 BUT WITHOUT THE PERFORATED SIDE, CENTRE OF BAG. 2 BAGS ARE THEN TO BE PACKED INTO A SUITABLE INNER CARTON BOX.

3. INNER CARTON LABEL:

LABEL AS PER CLEAR PLASTIC BAG NOTE 2 BUT WITH INNER CARTON QTY 2000 TO BE POSITIONED ON THE SIDE OF THE BOX FOR VIEWING WHEN STORED.

THIS DRAWING IS A CONTROLLED DOCUMENT.		DWN K.Raghu	10AUG05	Tyco Electronics Corporation Bideford, UK, EX39 4HE		
DIMENSIONS: mm		CHK S. Parlow	12/04/07	NAME		
	TOLERANCES UNLESS OTHERWISE SPECIFIED:	APVD F. Wheeler-King	12/04/07	EURO-CRIMP INSULATED END CONNECTOR 0.5mmsq - 1.5mmsq / 22-16 AWG RANGE		
	0 PLC ± 0.5 1 PLC ± 0.2 2 PLC ± 0.1 3 PLC ± 0.015 4 PLC ± - ANGLES ± -	PRODUCT SPEC	—			
	MATERIAL —	FINISH —	APPLICATION SPEC	—		
			WEIGHT —	—		
CUSTOMER DRAWING		SIZE A2	CAGE CODE 00779	DRAWING NO C=1838205	RESTRICTED TO —	
		SCALE NTS	SHEET 2	OF 2	REV B	