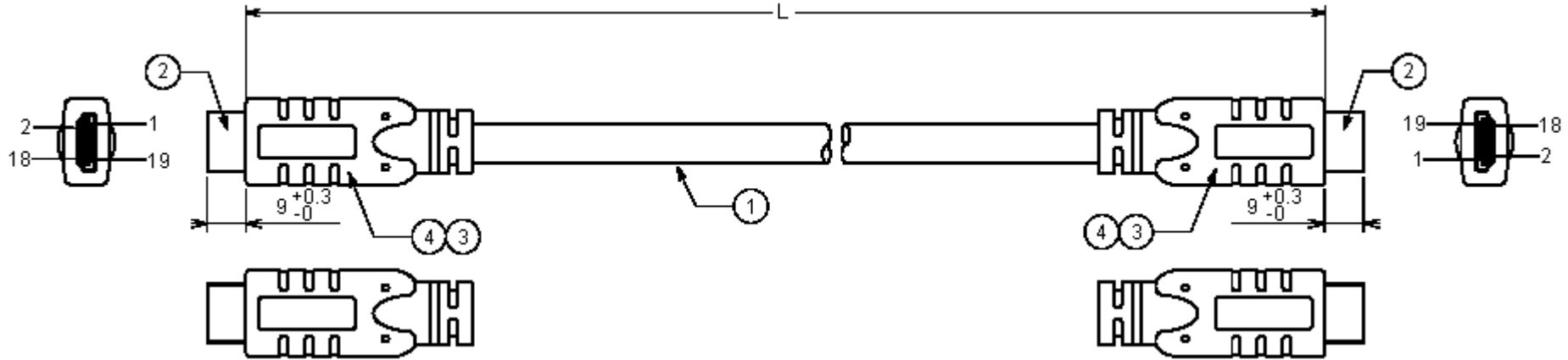
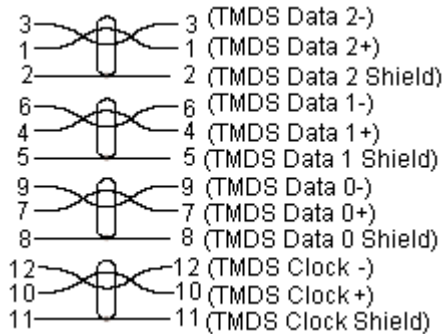
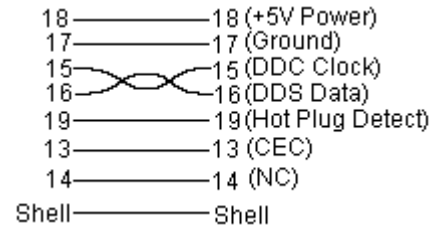


ECN #	REV	DESCRIPTION	DRAWN	DATE	CHECKD	DATE	APPRVD	DATE
-	A	RELEASED	RAV	26/5/12	SHA	26/5/12		11/6/12



Dimensions : Millimetres

Pin Assignment:
HDMI 19M HDMI19M

HDMI 19M HDMI19M


www.element14.com
www.farnell.com
www.newark.com

Important Notice : This data sheet and its contents (the "Information") belong to the members of the Premier Farnell group of companies (the "Group") or are licensed to it. No licence is granted for the use of it other than for information purposes in connection with the products to which it relates. No licence of any intellectual property rights is granted. The Information is subject to change without notice and replaces all data sheets previously supplied. The Information supplied is believed to be accurate but the Group assumes no responsibility for its accuracy or completeness, any error in or omission from it or for any use made of it. Users of this data sheet should check for themselves the information and the suitability of the products for their purpose and not make any assumptions based on information included or omitted. Liability for loss or damage resulting from any reliance on the Information or use of it (including liability resulting from negligence or where the Group was aware of the possibility of such loss or damage arising) is excluded. This will not operate to limit or restrict the Group's liability for death or personal injury resulting from its negligence. Multicomp is the registered trademark of the Group. © Premier Farnell plc 2012.

TOLERANCES:

UNLESS OTHERWISE SPECIFIED, DIMENSIONS ARE FOR REFERENCE PURPOSES ONLY.

DRAWN BY:

RAV

CHECKED BY:

SHA

APPROVED BY:
DATE:

26/05/12

DATE:

26/05/12

DATE:

11/06/12

DRAWING TITLE:
Cable Assembly - HDMI - HDMI
SIZE

A

DWG NO.

M10001986

ELECTRONIC FILE

338002_DWG

REV

A

SCALE: NTS

U.O.M.: mm

SHEET: 1 OF 1



PART NO.

18-941926 Series

REVISIONS

ECN #	REV	DESCRIPTION	DRAWN	DATE	CHECKD	DATE	APPRVD	DATE
-	A	RELEASED	RAV	26/5/12	SHA	26/5/12		11/6/12

Specifications:

Electrical Character :

100% open and short test

Hi-pot : 300 V dc 10 ms

Minimum insulation resistance : 10 MΩ

Maximum contact resistance : 5

Item	Description	Part Name
1	(24 AWG × 1 PR + Drain Wire + Free Edge AL / Mylar) × 4 + 24 AWG× 1 P + 24 AWG × 5 C + AL / Mylar + Braid Outer Diameter : 10.5 mm Black Impedance: 100Ω	HDMI Cable
2	HDMI 19 P Male 30 U × Inches / AU Black Shell G / F Plated Solder Type with PCB	HDMI Connector
3	PE Low Density	Innermould
4	PVC 70 Pa Black	Overmould

Specification Table

Description	L	Part Number
Cable Assembly, HDMI to HDMI, 10 M	10,000 ±200	18-94192670
Cable Assembly, HDMI to HDMI, 15 M	15,000 ±300	18-94192672

Important Notice : This data sheet and its contents (the "Information") belong to the members of the Premier Farnell group of companies (the "Group") or are licensed to it. No licence is granted for the use of it other than for information purposes in connection with the products to which it relates. No licence of any intellectual property rights is granted. The Information is subject to change without notice and replaces all data sheets previously supplied. The Information supplied is believed to be accurate but the Group assumes no responsibility for its accuracy or completeness, any error in or omission from it or for any use made of it. Users of this data sheet should check for themselves the Information and the suitability of the products for their purpose and not make any assumptions based on information included or omitted. Liability for loss or damage resulting from any reliance on the Information or use of it (including liability resulting from negligence or where the Group was aware of the possibility of such loss or damage arising) is excluded. This will not operate to limit or restrict the Group's liability for death or personal injury resulting from its negligence. Multicomp is the registered trademark of the Group. © Premier Farnell plc 2012.

TOLERANCES: UNLESS OTHERWISE SPECIFIED, DIMENSIONS ARE FOR REFERENCE PURPOSES ONLY.	DRAWN BY:	DATE:	DRAWING TITLE: Cable Assembly - HDMI - HDMI			
	RAV	26/05/12				
	CHECKED BY:	DATE:	SIZE	DWG NO.	ELECTRONIC FILE	REV
	SHA	26/05/12	A	M10001986	338002_DWG	A
	APPROVED BY:	DATE:	SCALE: NTS		U.O.M.: mm	SHEET: 2 OF 2
	11/06/12					