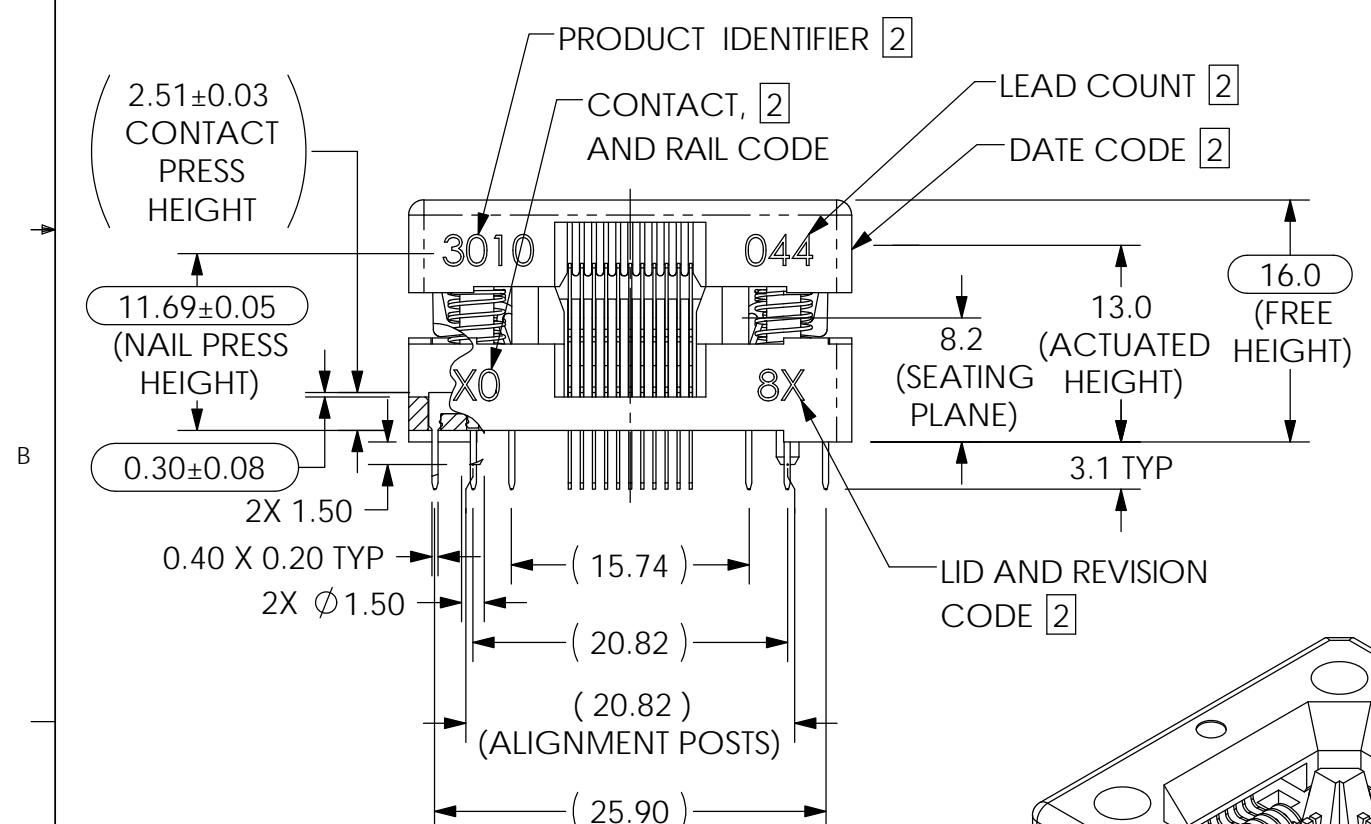
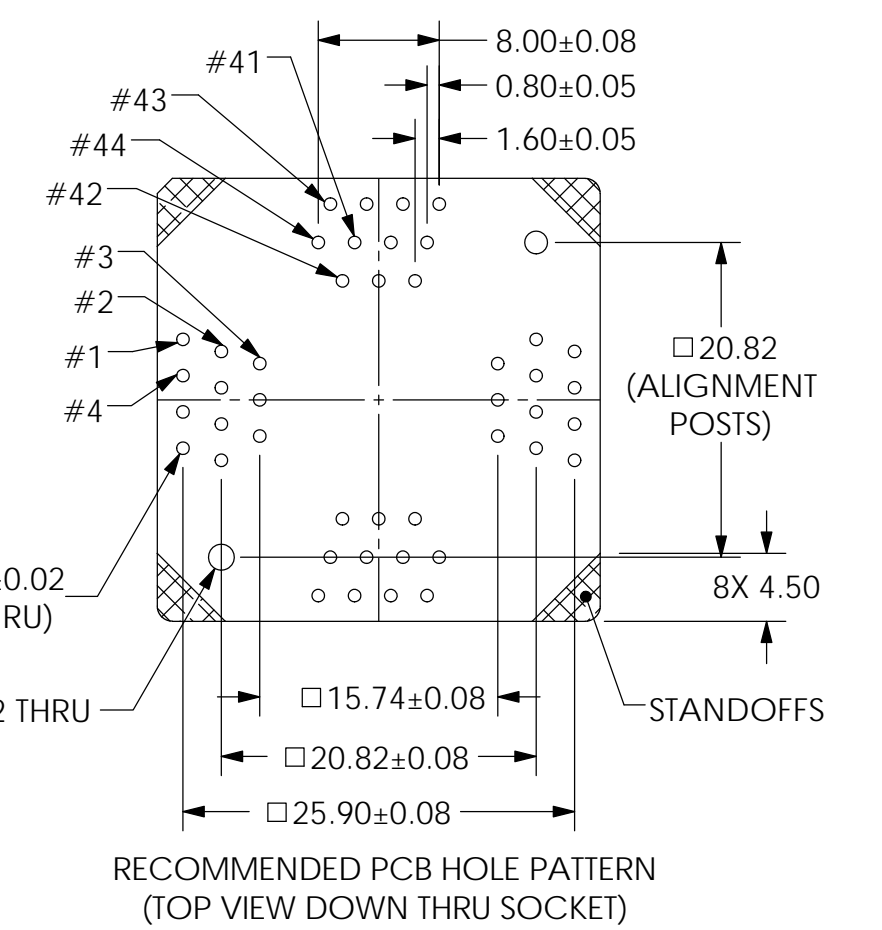
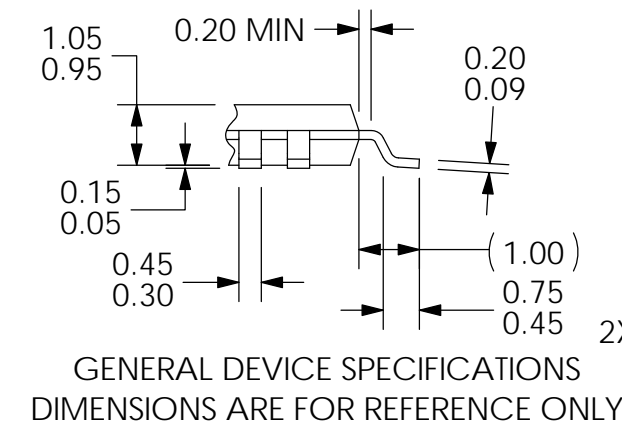
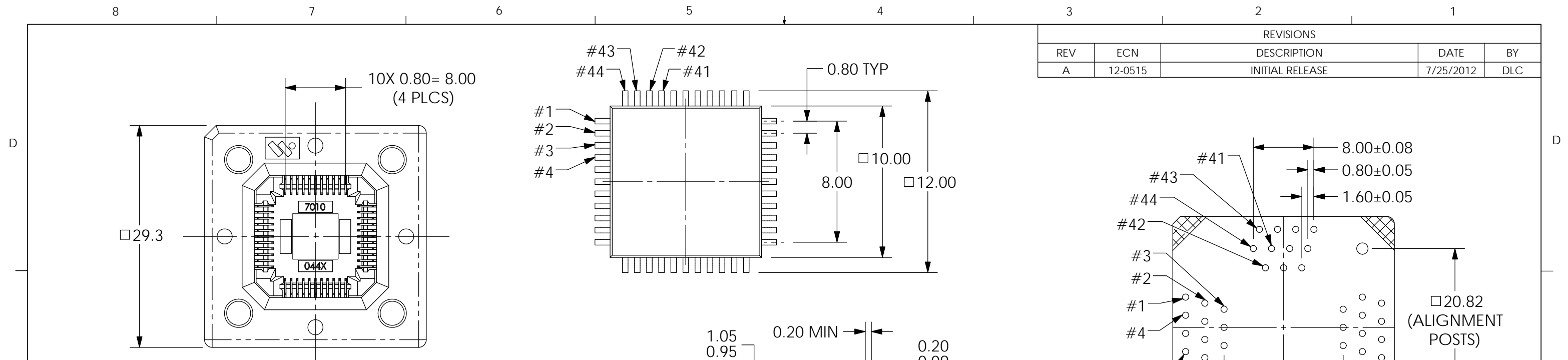
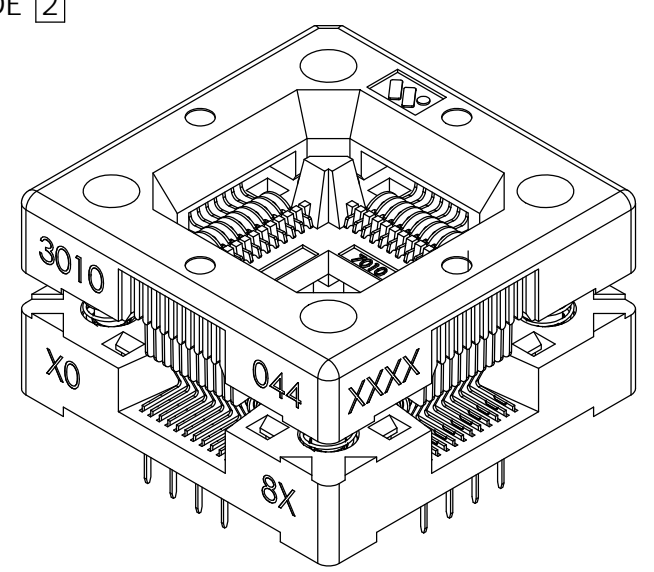


REVISIONS				
REV	ECN	DESCRIPTION	DATE	BY
A	12-0515	INITIAL RELEASE	7/25/2012	DLC



3010-044 - X - 08 X
 SOCKET ASSEMBLY REVISION
 CONTACT MATERIAL & PLATING
 0 = BeCu w/ Au (Overall) (SPECIAL ORDER)
 6 = BeCu w/ Au-Au FLASH
 7 = Pfin w/ Au-Au FLASH (SPECIAL ORDER)

3. THIS PRODUCT IS ROHS COMPLIANT.
 [2] MARKING: 2.0 HIGH, COLOR - WHITE, LOCATE AS SHOWN.
 1. MATERIAL AND FINISH:
 SOCKET LID - POLYETHERIMIDE
 SOCKET BASE - POLYETHERIMIDE
 CONTACTS - SEE CHART
 NAILS AND SPRINGS - STAINLESS STEEL, PASSIVATED.
 NOTES, UNLESS OTHERWISE SPECIFIED:



ITEM NO.	QTY.	PART NUMBER	DESCRIPTION
5	1	001-495-30	SOCKET LID
4	1	001-494-30	SOCKET BASE
3	44	002-086-XX	CONTACT, REDUCED ACTUATION FORCE
2	4	006-027-00	CORNER NAIL
1	4	2800632	SPRING, COMP., .150IN. O.D., .200IN. LEN.

LEGEND		INTERPRET DRAWING IN ACCORDANCE WITH ASME Y14.5M-1994	MATERIAL N/A		
	CRITICAL		FINISH N/A		
03	TOTAL NO. OF USED	TOLERANCES X.X ± 0.2 X.XX ± 0.08 X.XXX ± 0.025 ANGLE ± 1°	REFERENCE	DRAWN DLC 7/25/2012	TITLE TQFP SOCKET ASSEMBLY (10MM, 44LD)
PROJECTION 			PROJECT / SERIES	CHECKED BMG 7/25/2012	DRAWING NUMBER 3010-044-X-08
SIZE B	CONFIDENTIAL/PROPRIETARY THIS DOCUMENT CONTAINS PROPRIETARY INFORMATION OF WELLS-CTI. NOT TO BE USED, COPIED OR DISCLOSED WITHOUT PERMISSION. ALL RIGHTS RESERVED.		QUALITY PDR 7/25/2012	DATE 7/25/2012	REV. A
			SCALE 2:1	UNITS: mm [in]	
			DO NOT SCALE	SHEET 1 OF 1	