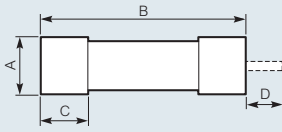


cartridge fuses

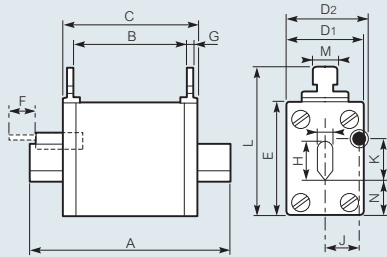
dimensions

■ Cylindrical fuses (p. 91-92)



Size	A	B	C	D
8 x 32 (mm)	8.5	31.5	6.3	-
10 x 38 (mm)	10.3	38	10	-
14 x 51 (mm)	14.3	51	13	7.5
22 x 58 (mm)	22.2	58	16	7.5

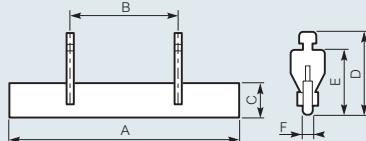
■ Blade type fuses (p. 93)



Size	00	0	1	2
A (mm)	78	125	135	150
B (mm)	44	62	64	64
C (mm)	52	67	74	74
D ₁ (mm)	30	36	47	50
D ₂ (mm)	-	39	47	50
E (mm)	46	46	52	60
F (mm)	-	14	14	14
G (mm)	2.5	2.5	3	3
H (mm)	15	15	21	28
I (mm)	6	6	6	6
J (mm)	-	14.5	16	19
K (mm)	-	14.5	14.5	14.5
L (mm)	59	59	64	72
M (mm)	10	10	10	10
N (mm)	14.5	14.5	14.5	14.5

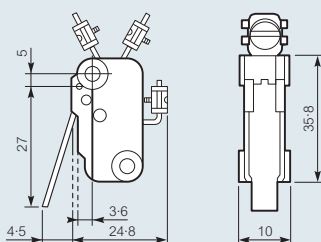
■ Neutral blades (p. 93)

Sizes 0 to 3



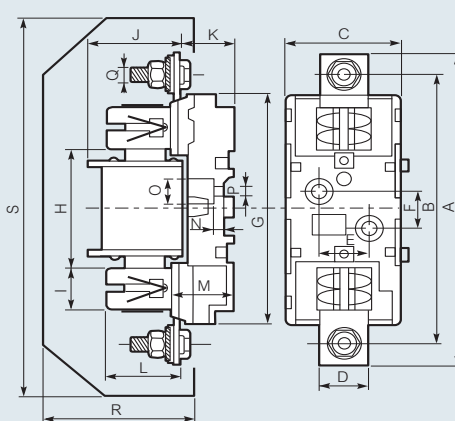
Size	0	1	2	3
A (mm)	125	135	150	150
B (mm)	65	65	65	65
C (mm)	15	20	26	38
D (mm)	45	50	58	66.5
E (mm)	35	40	48	56.5
F (mm)	6	6	6	6

■ Micro-switch 10 A – 250 V~



■ Bases for blade type fuses (p. 94)

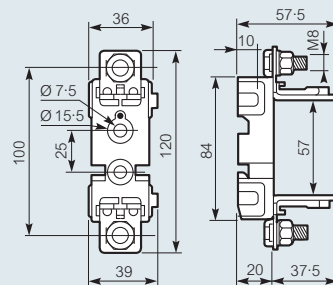
Bare



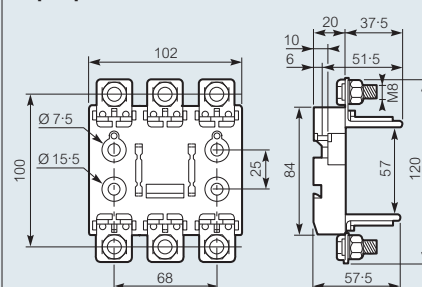
Size	00	0	1	2
A (mm)	120	171	200	225
B (mm)	100	150	175	200
C (mm)	36	47	59	67
D (mm)	24	20	25	30
E (mm)	-	-	30	30
F (mm)	25	25	25	25
G (mm)	120	125	150	170
H (mm)	57	75	80	80
I (mm)	11	23	28	32
J (mm)	63	68	68	83
K (mm)	20	24	35	35
L (mm)	35	43	46	58
M (mm)	22.5	28	38	39
N (mm)	12	11.5	13.5	13.5
O (mm)	15	14	20	20
P (mm)	7	7.5	10.5	10.5
Q (mm)	8	8	10	10
R (mm)	84	96	107	121
S (mm)	125	180	224	240

■ Size 00 fixing on rail (p. 94)

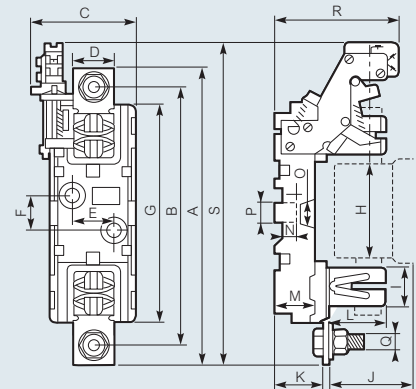
Single pole



Triple pole

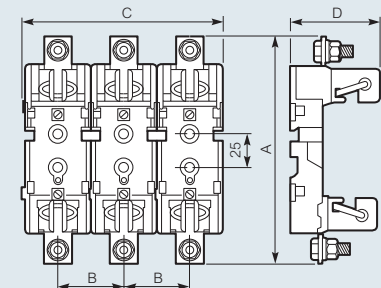


■ With micro-switch (p. 94)



Size	0	1	2
A (mm)	171	200	225
B (mm)	150	175	200
C (mm)	63	72	78
D (mm)	20	25	30
E (mm)	-	30	30
F (mm)	25	25	25
G (mm)	125	150	170
H (mm)	75	80	80
I (mm)	23	28	32
J (mm)	68	68	83
K (mm)	24	35	35
L (mm)	43	46	58
M (mm)	28	38	39
N (mm)	11.5	13.5	13.5
O (mm)	14	20	20
P (mm)	7.5	10.5	10.5
Q (mm)	8	10	10
R (mm)	75	85	90
S (mm)	198	215	229

Triple pole (p. 94)



Size	0	1	2
A (mm)	171	200	225
B (mm)	48	62.5	68
C (mm)	144	180	204
D (mm)	67	81	93

■ Removable handle (p. 94)

For sizes 00 - 0 - 1 - 2

