

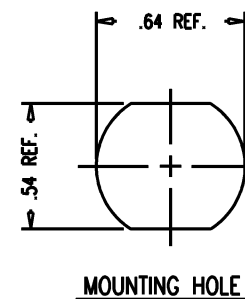
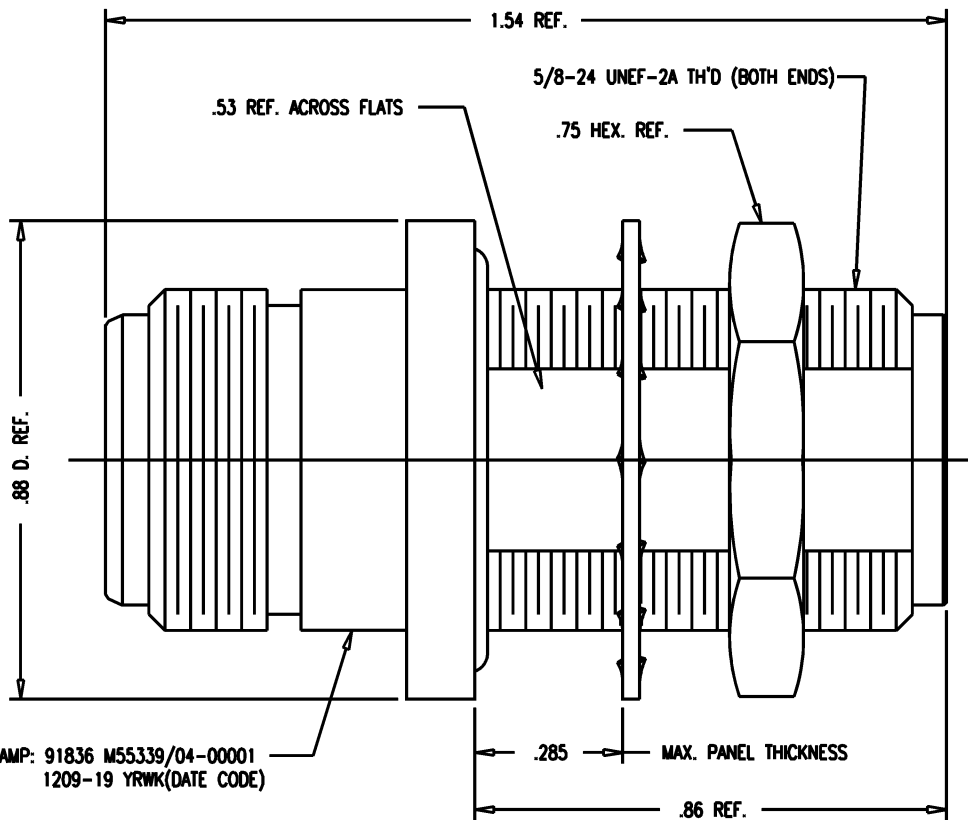
DASH NO.	M CODE	MADE FROM
----------	--------	-----------

GSD

M55339/04-00001

REVISIONS

ISSUE	CHANGES	
4	CN KH	32393 A 07/31/90
5	CN KH	35618 D 01/09/95
6	CN JW	37573 C 03/17/98



STAMP: 91836 M55339/04-00001
1209-19 YRWR(DATE CODE)

NOTES:

- INTERFACES PER MIL-STD-348, FIG. 3042.
- MATERIALS:
INSULATORS-TEFLON, ASTM-D-1457
O-RINGS-SILICONE RUBBER, ZZ-R-765
LOCKWASHER-PHOSPHOR BRONZE, QQ-B-750
CENTER CONTACT-BER. COP., ASTM-B-196
ALL OTHER METAL PARTS-BRASS, QQ-B-626
- FINISHES:
CENTER CONTACTS-GOLD PLATE PER MIL-G-45204
ALL OTHER METAL PARTS-SILVER PLATE PER QQ-S-365
- ELECTRIAL CHARACTERISTICS:
NOMINAL IMPEDANCE-50 OHMS
FREQUENCY RANGE-DC TO 11 GHz
WORKING VOLTAGE-1000 VRMS

120919S

SCALE 4:1

APPROX SURFACE AREA

1209-19

USED ON

REF:

N BULKHEAD ADAPTER
PRESSURIZED (F-F)

DRAWN KH DATE 07/31/90

DESIGN AT DATE 08/01/90

APPR. DATE

KINGS
ELECTRONICS CO., INC.
TUCKAHOE, NEW YORK 10707

M55339/04-00001

GSD