

LOC		DIST		REVISIONS			
GP	00	P	LYR	DESCRIPTION	DATE	DWN	APVD
				B	REV PER ECO-09-020440	11SEP2009	CR JPB
				C	REVISED PER ECO-10-018054	02NOV2010	CJV EJB

- 1

SURFACE TRACES PERMITTED WITHIN THIS AREA EXCEPT WHERE CAGE STANDOFFS, SHOWN IN DETAIL S, CONTACT PC BOARD.
- 2

PITCH BETWEEN PORTS OF ONE 1X3 CAGE ASSEMBLY.
- 3

SPACING BETWEEN CAGES ON THE SAME PC BOARD, TO BE SPECIFIED BY CUSTOMER, MUST COMPLY WITH MINIMUM DIMENSIONS SHOWN.
- 4

REFERENCE APPLICATION SPEC 114-13218 FOR RECOMMENDED DRILL HOLE DIAMETER AND PLATING THICKNESS.
- 5

UNPLATED THRU HOLE.
- 6

DATUMS AND BASIC DIMENSIONS ESTABLISHED BY CUSTOMER.
- 7

DATUM 

-A-

 IS TOP SURFACE OF PC BOARD.
- 8

DIMENSION C IS THE NOMINAL THICKNESS OF CUSTOMER SUPPLIED PC BOARD.  
MINIMUM PC BOARD THICKNESS:  
SINGLE SIDED = 1.45mm  
DOUBLE SIDED = 2.2mm PER QSFP
9.

MATES WITH QSFP MSA COMPATIBLE TRANSCEIVER.
- 10

BASELINE FOR THESE DIMENSIONS IS THE CENTER OF COMPLIANT PIN HOLE.
- 11

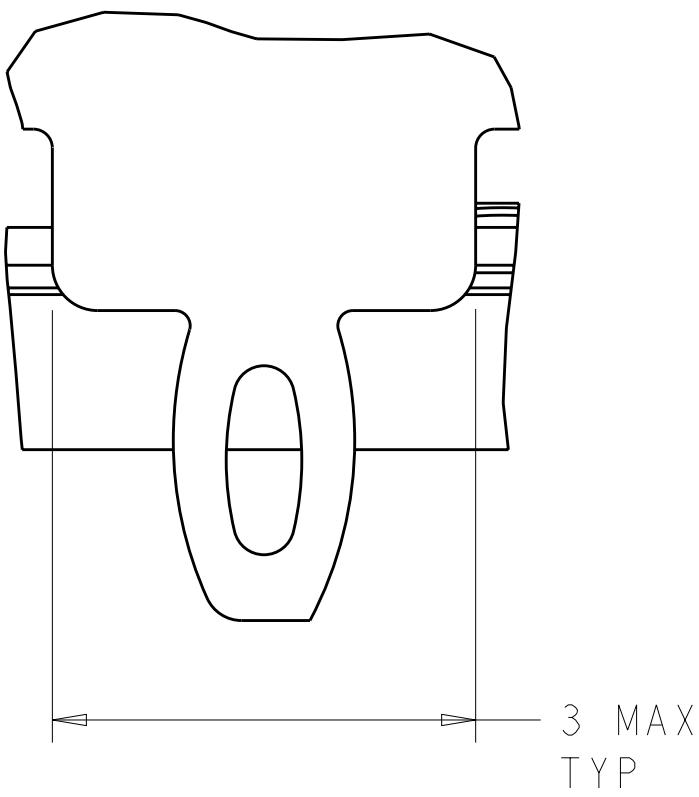
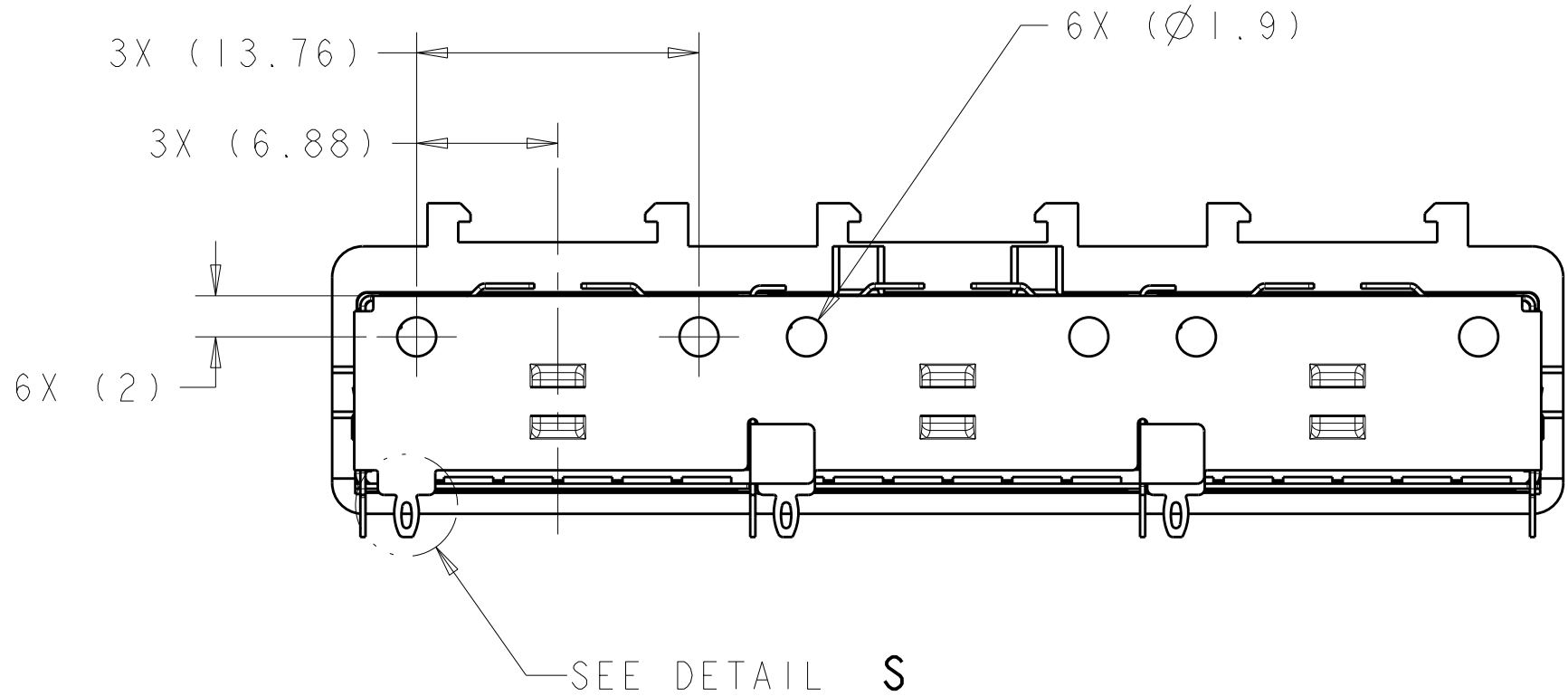
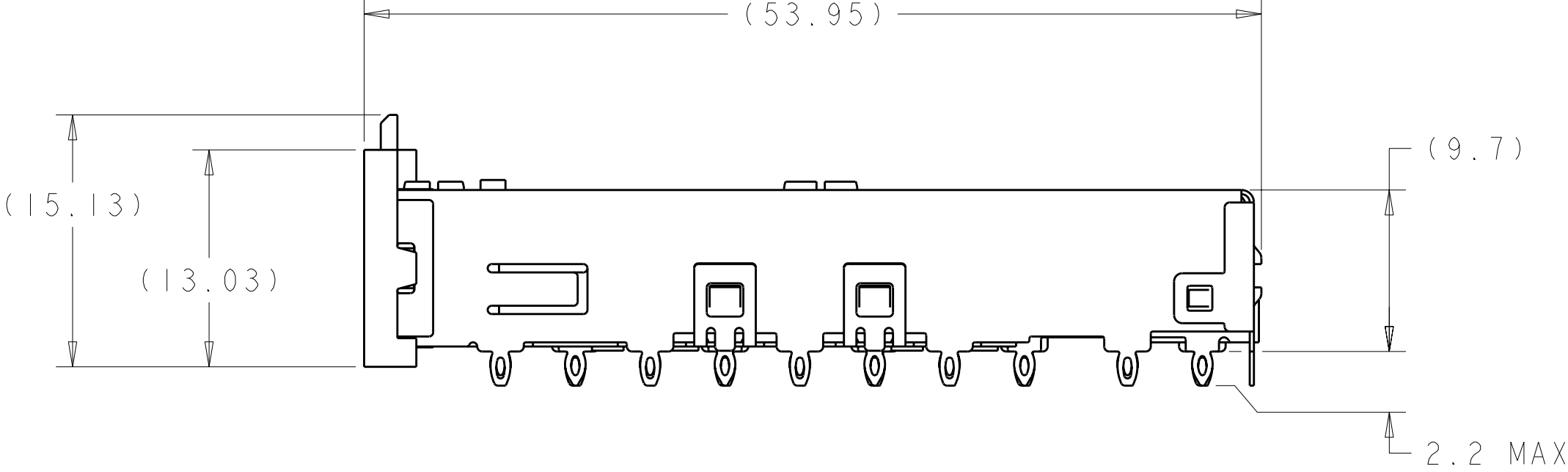
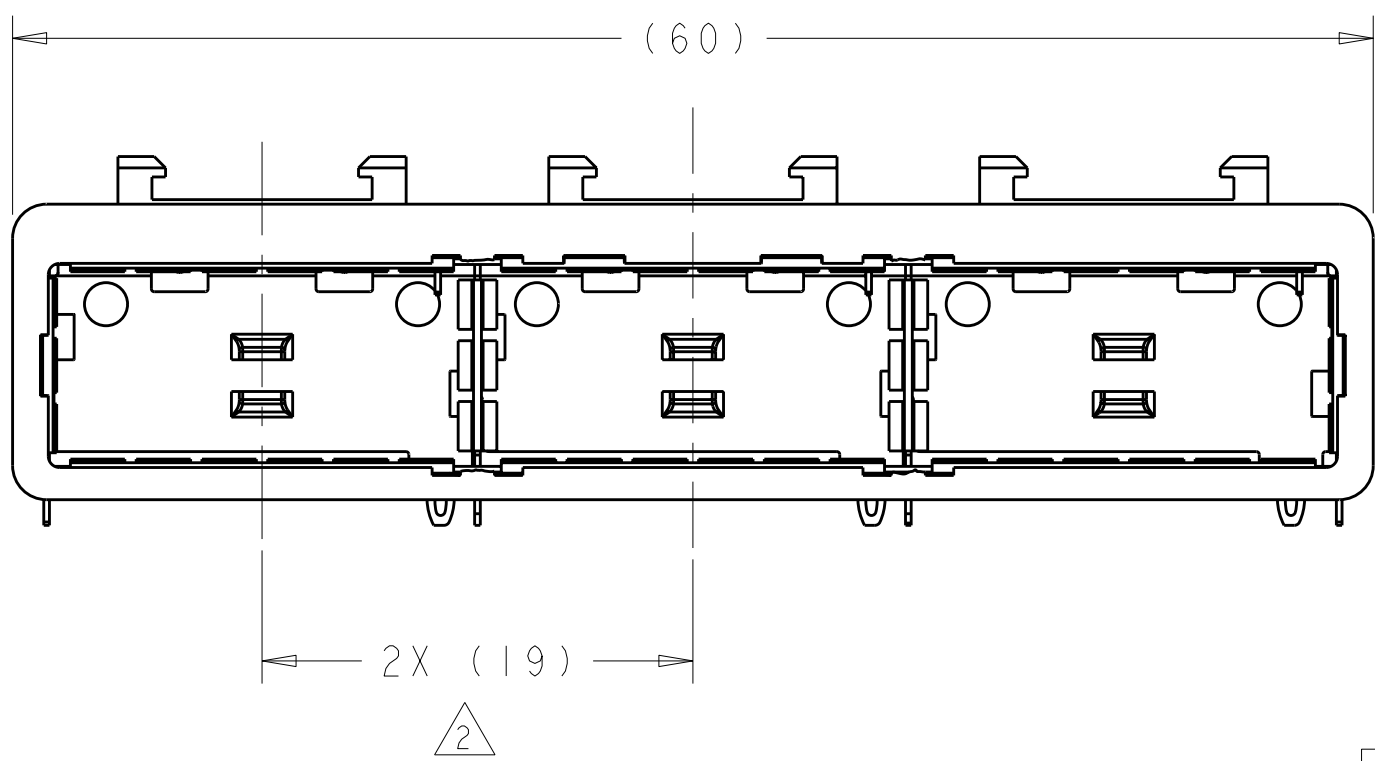
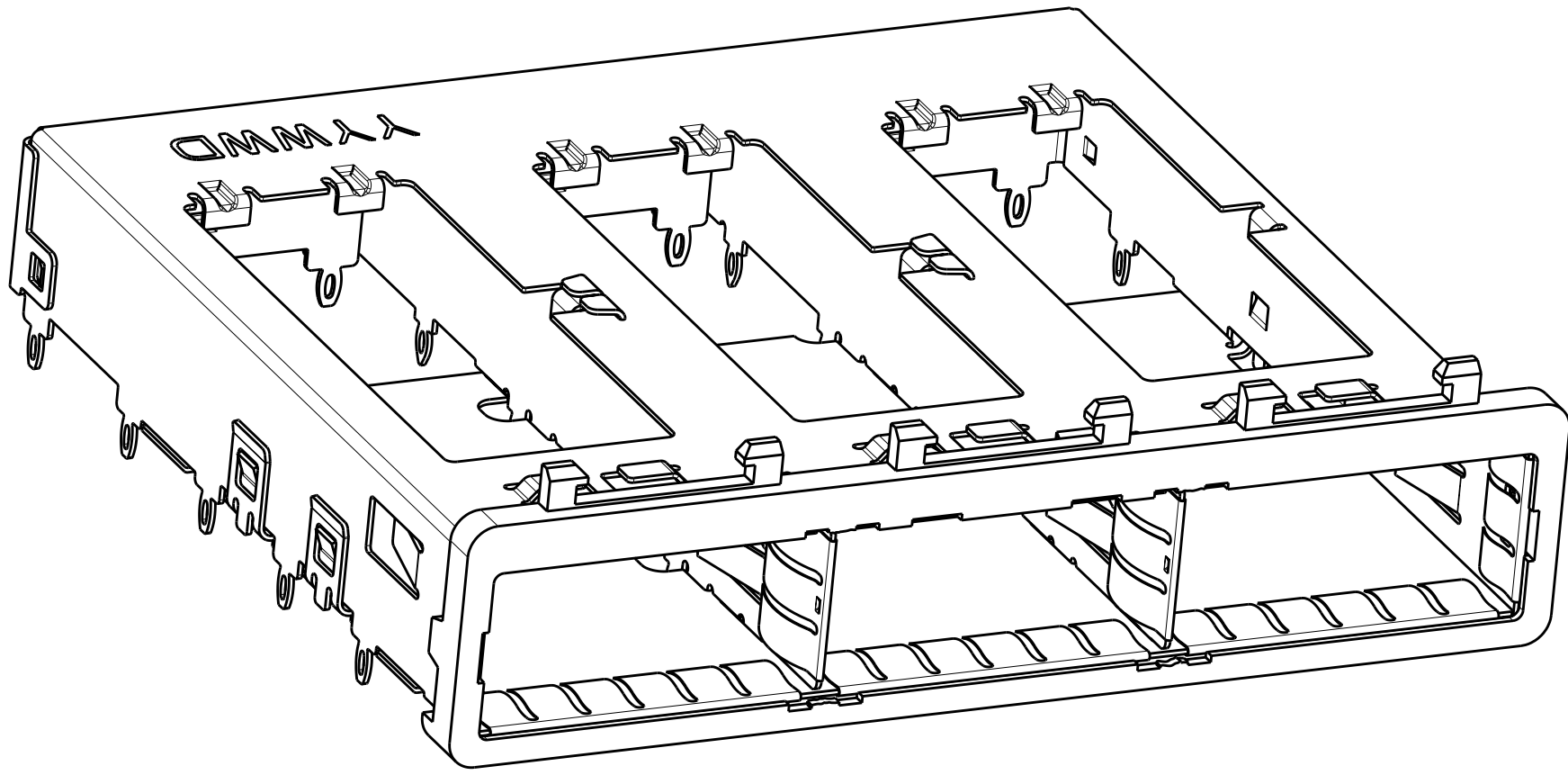
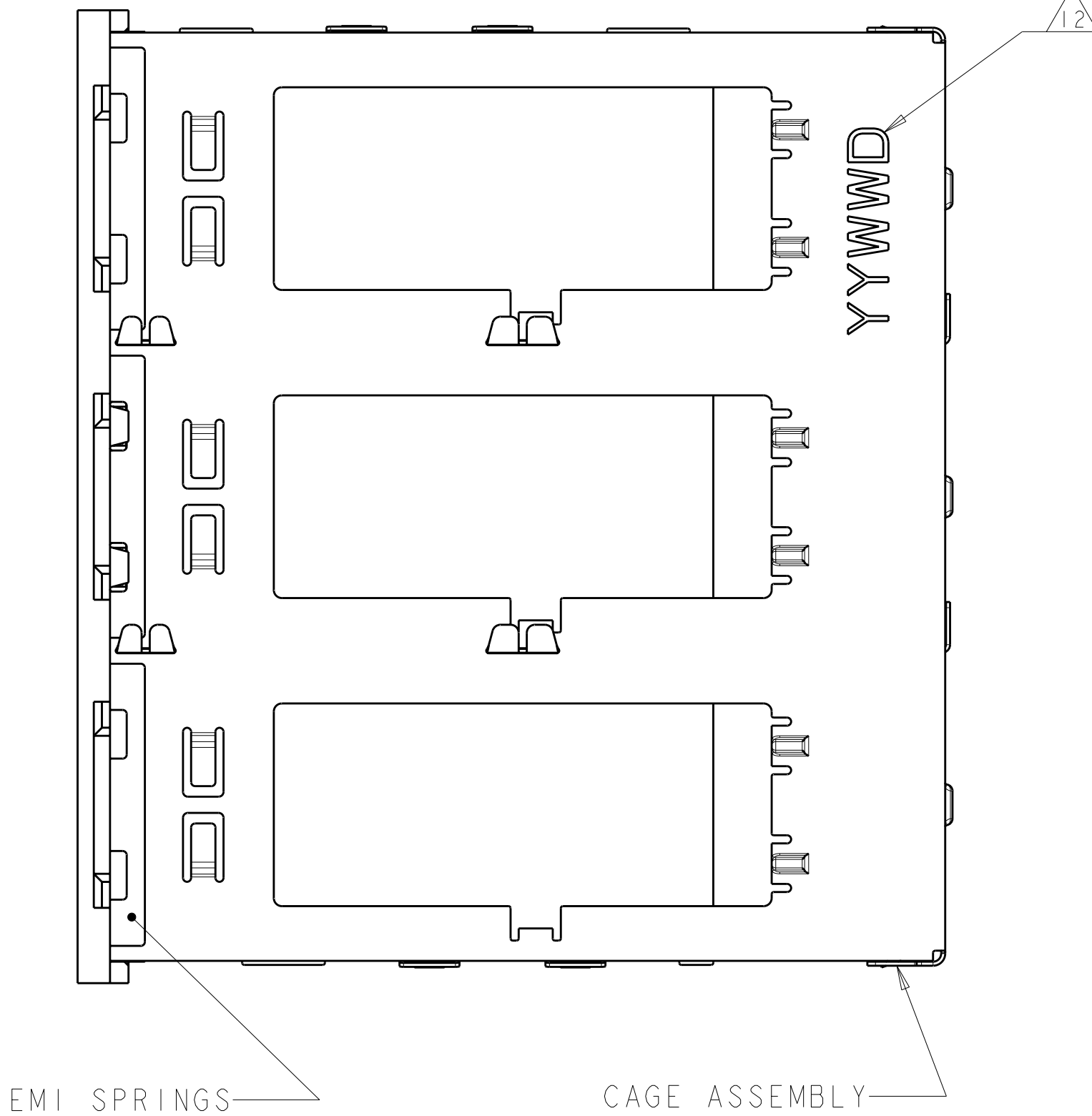
LED ON HOST BOARD. QUANTITY, POSITION AND GEOMETRY DEPENDS ON CHOICE OF LIGHT PIPES.
- 12

DATE CODE (YYWWDD) MARKED APPROXIMATELY AS SHOWN.
- 13

REFERENCE APP SPEC 114-13218 FOR GASKET THICKNESS CALCULATION.
- 14

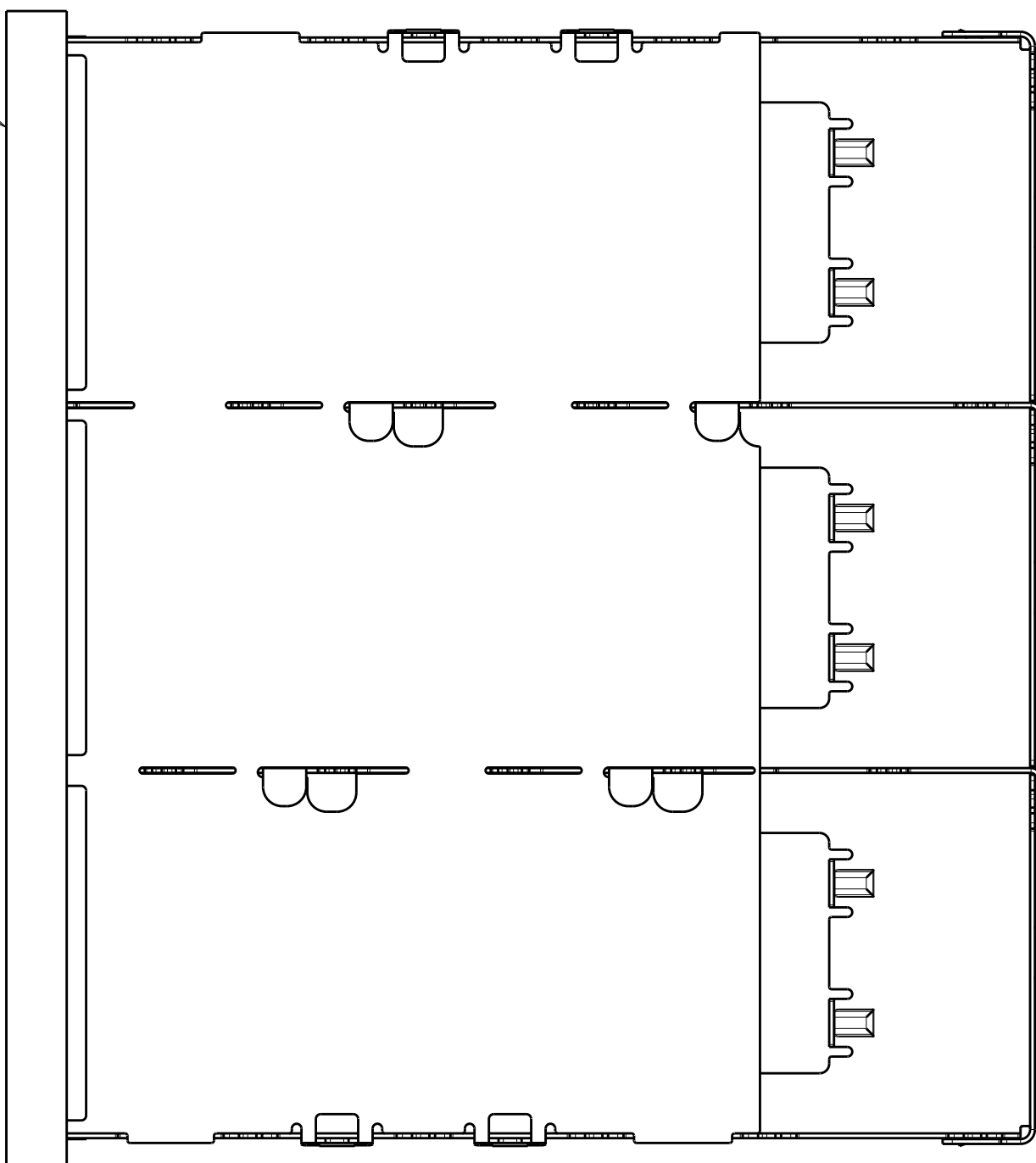
MATERIAL:  
CAGE ASSEMBLY: NICKEL SILVER, 0.25 THICK  
EMI SPRINGS: COPPER ALLOY  
FRONT FLANGE: ZINC ALLOY.
- 15

FINISH:  
EMI SPRINGS: 2µm MINIMUM TIN  
FRONT FLANGE: 3µm MINIMUM TIN OVER 1.27µm MINIMUM NICKEL OVER 5.08µm MINIMUM COPPER.



DETAIL S  
SCALE 20:1

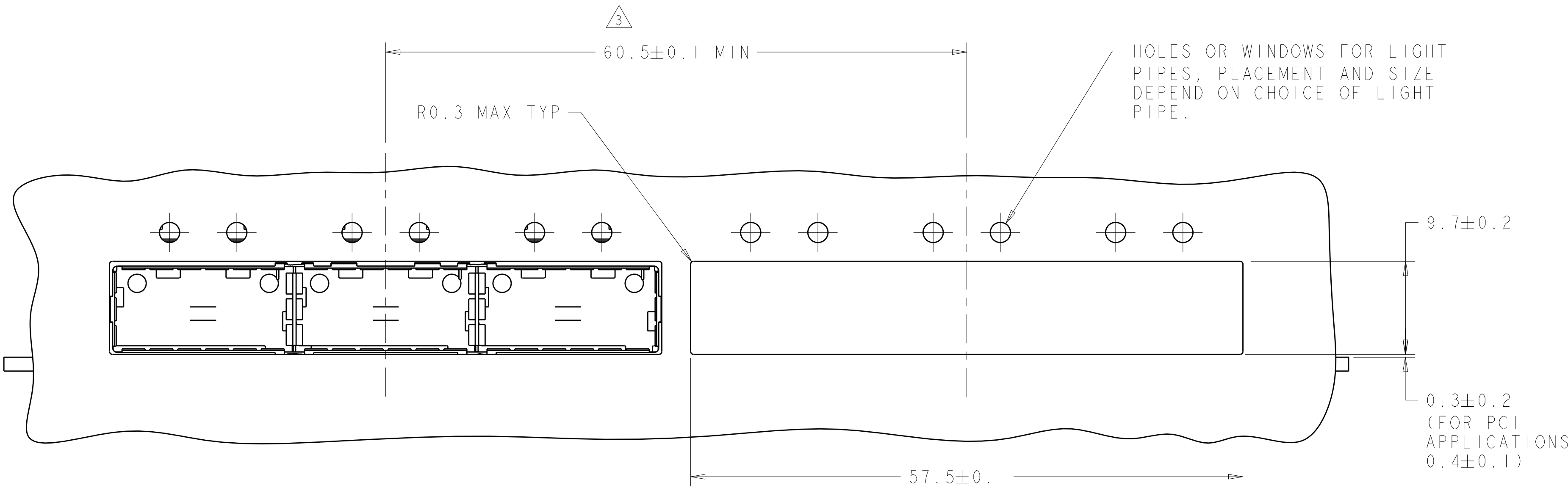
FRONT FLANGE



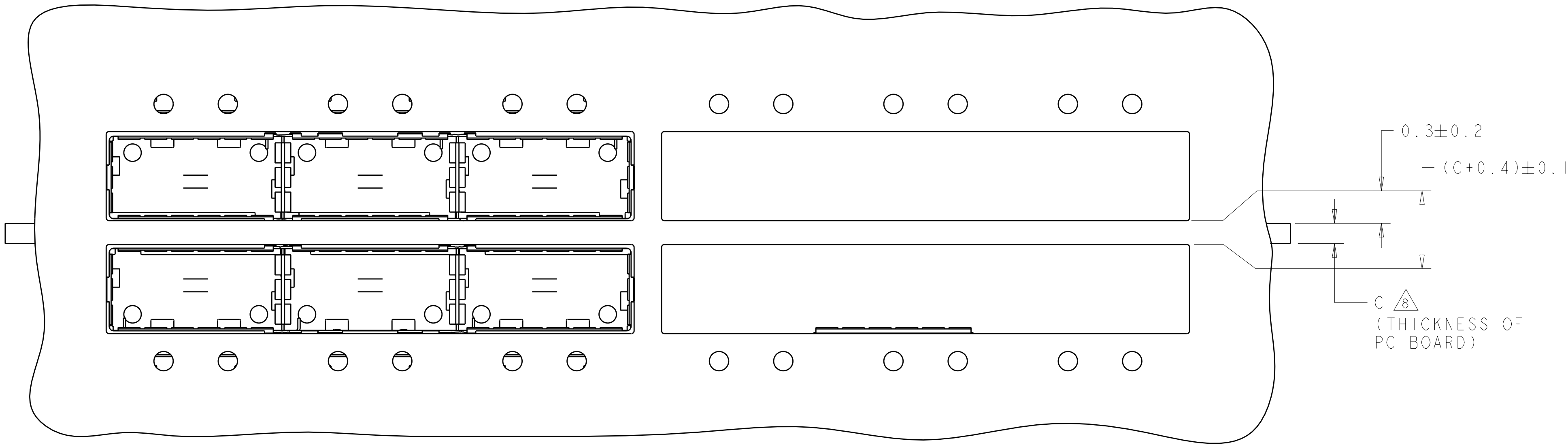
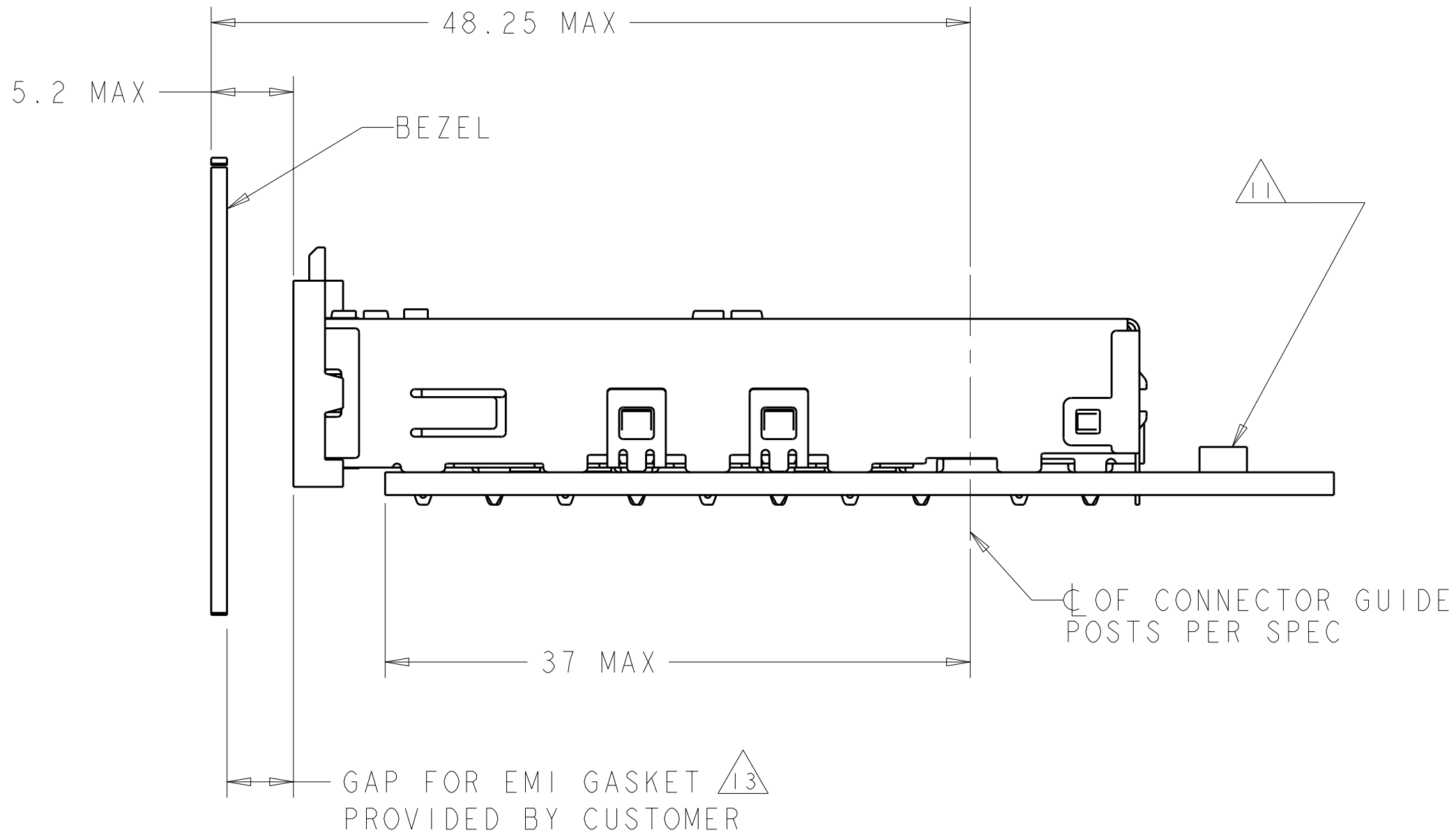
THIS PRODUCT HAS NOT COMPLETED VALIDATION/QUALIFICATION TESTING

2007473-1 PART NUMBER		Tyco Electronics Harrisburg, PA 17105-3608	
DWN C. VALENTIN 21NOV2007 CHK E. BRIGHT 21NOV2007 APVD E. BRIGHT 21NOV2007		NAME IX3 CAGE ASSEMBLY, W/ LIGHT PIPE BRACKET, BEHIND BEZEL, QSFP	
DIMENSIONS: mm 9 PLC ±.1 2 PLC ±0.1 3 PLC ±0.1 5 PLC ±0.013 4 PLC ±0.0001 ANGLES FINISH		TOLERANCES UNLESS OTHERWISE SPECIFIED: PRODUCT SPEC 108-2286 APPLICATION SPEC 114-13218 WEIGHT CUSTOMER DRAWING	
SCALE 3:1		SHEET 1 OF 4 REV C	

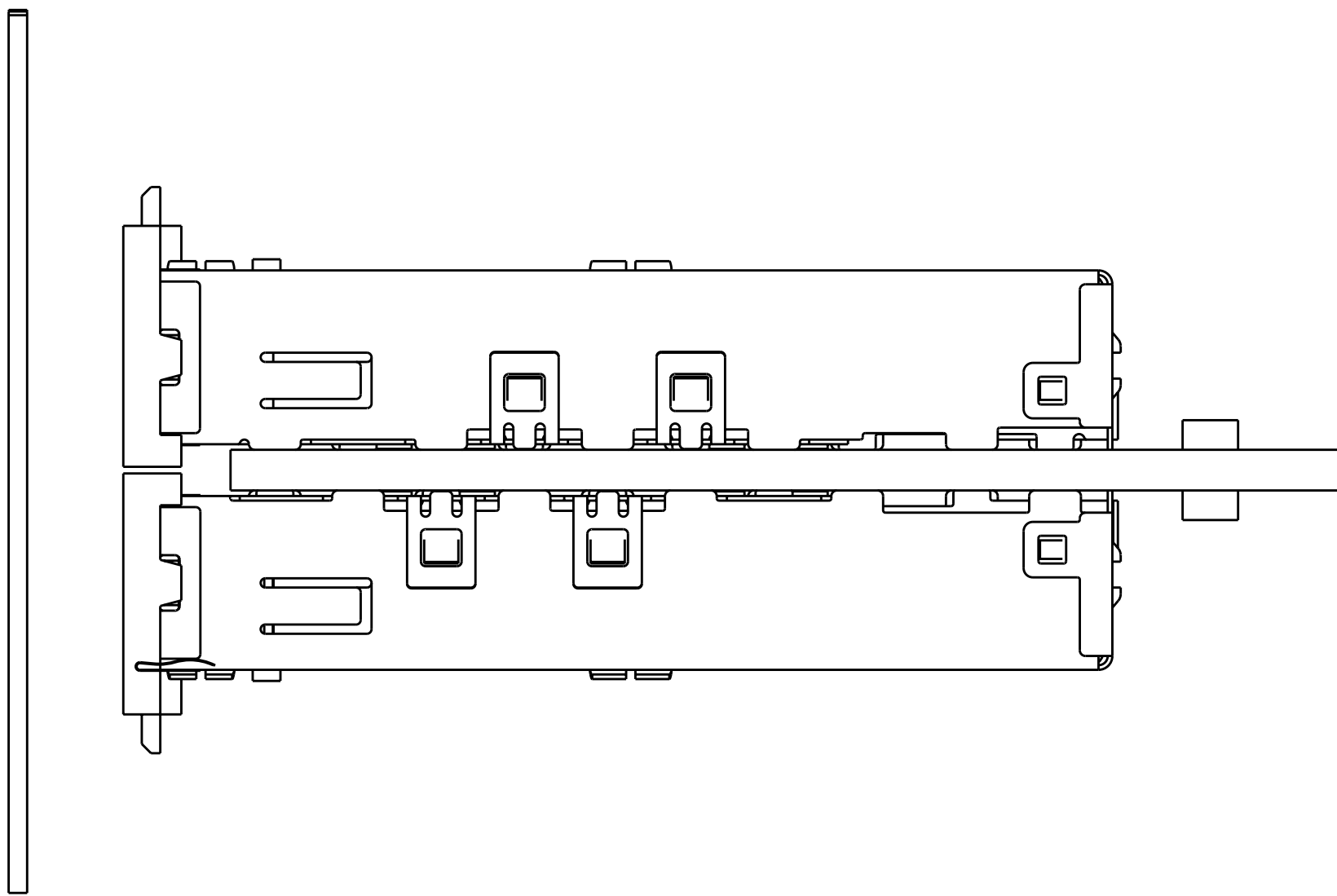
LOC		DIST		REVISIONS					
GP		00		DESCRIPTION			DATE	DWN	APVD
				P	LTR				
					-	SEE SHEET 1	-	-	-



ONE SIDED CONFIGURATION  
SCALE 3:1

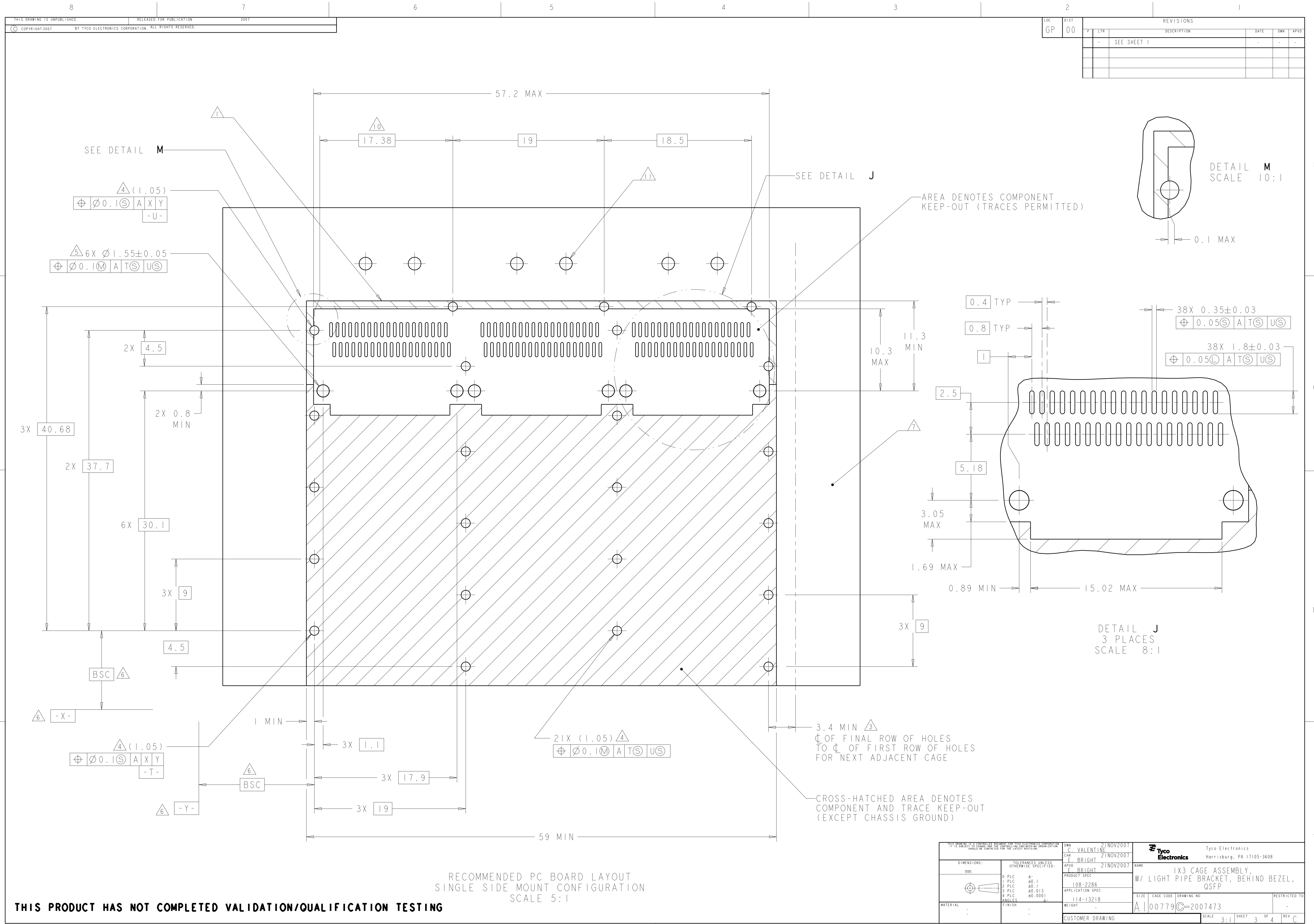


BELLY TO BELLY CONFIGURATION SIMILAR  
TO ONE SIDED EXCEPT WHERE NOTED  
SCALE 3:1

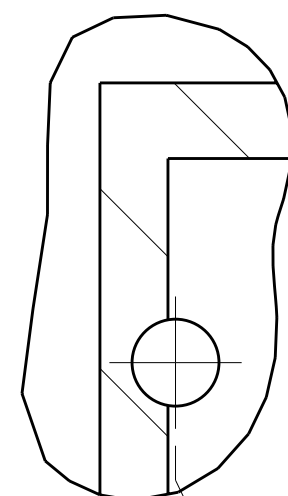


THIS PRODUCT HAS NOT COMPLETED VALIDATION/QUALIFICATION TESTING

THIS DRAWING IS UNPUBLISHED. IT IS THE PROPERTY OF TYCO ELECTRONICS CORPORATION. IT IS TO BE USED ONLY FOR THE PURPOSES SPECIFIED IN THE DRAWING. IT IS NOT TO BE REPRODUCED OR TRANSMITTED IN ANY FORM OR BY ANY MEANS, ELECTRONIC OR MECHANICAL, INCLUDING PHOTOCOPYING, RECORDING, OR BY ANY INFORMATION STORAGE AND RETRIEVAL SYSTEM. WITHOUT PERMISSION IN WRITING FROM TYCO ELECTRONICS CORPORATION. SHOULD BE CONTACTED FOR THE LATEST EDITION.				DWN C. VALENTIN 21NOV2007	Tyco Electronics Harrisburg, PA 17105-3608			
E. BRIGHT 21NOV2007				NAME	IX3 CAGE ASSEMBLY, W/ LIGHT PIPE BRACKET, BEHIND BEZEL, QSFP			
F. BRIGHT 21NOV2007				PRODUCT SPEC	108-2286			
				APPLICATION SPEC	114-13218			
				WEIGHT	-			
				CUSTOMER DRAWING	SCALE 3:1 SHEET 2 OF 4 REV C			



LOC		DIST		REVISIONS			
GP	00	F	LYR	DESCRIPTION	DATE	DWN	APVD
		-	-	SEE SHEET 1	-	-	-



DETAIL M  
SCALE 10:1

0.1 MAX

0.4 TYP

0.8 TYP

1

2.5

5.18

3.05 MAX

1.69 MAX

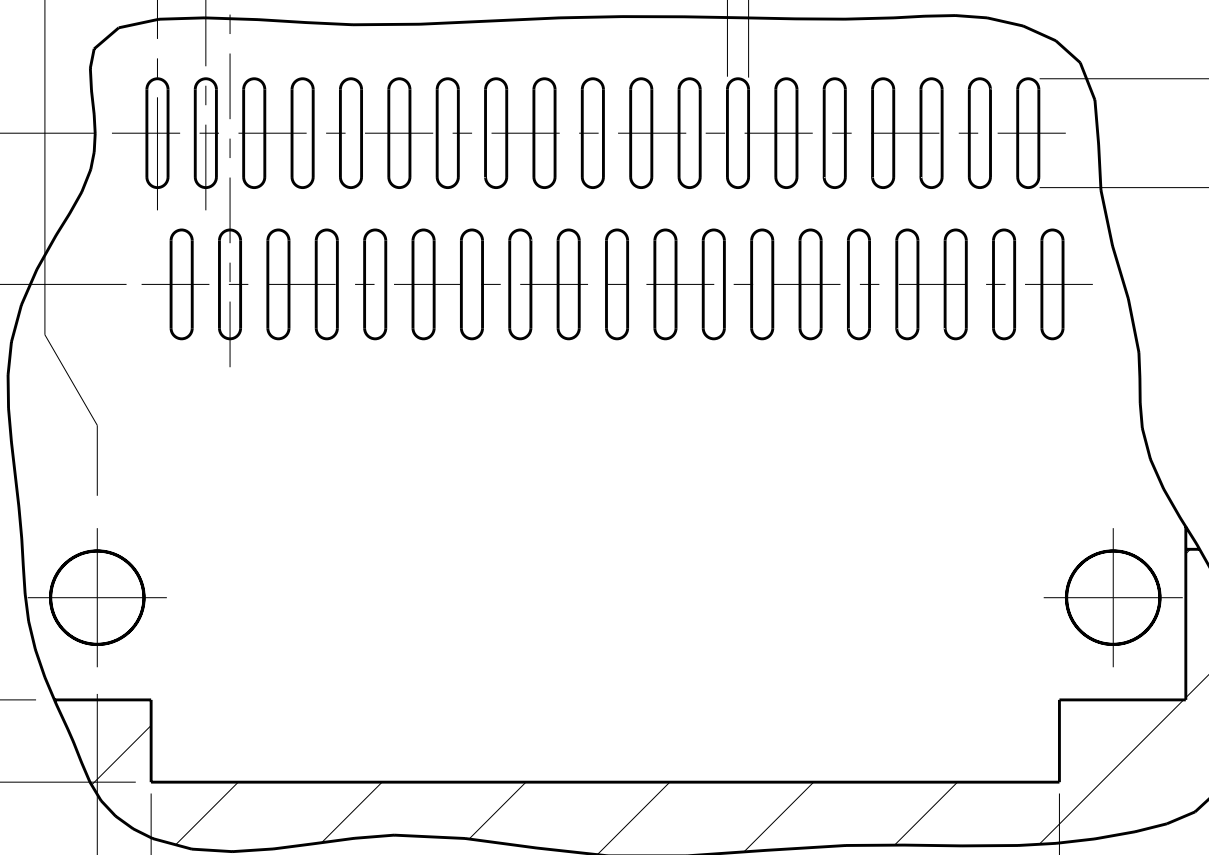
0.89 MIN

38X 0.35±0.03

⌀ 0.05Ⓢ A TⓈ UⓈ

38X 1.8±0.03

⌀ 0.05Ⓢ A TⓈ UⓈ

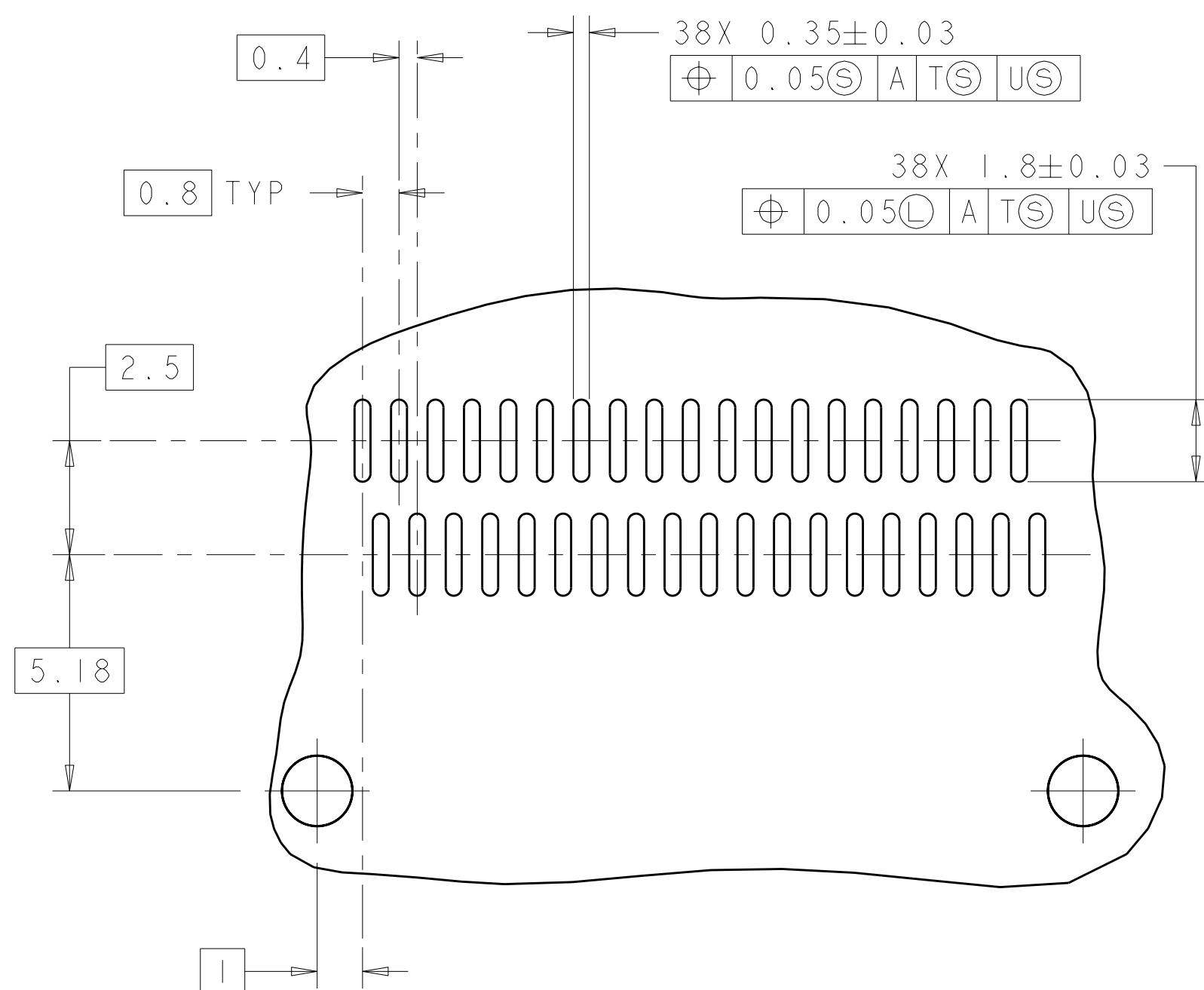


DETAIL J  
3 PLACES  
SCALE 8:1

RECOMMENDED PC BOARD LAYOUT  
SINGLE SIDE MOUNT CONFIGURATION  
SCALE 5:1

THIS PRODUCT HAS NOT COMPLETED VALIDATION/QUALIFICATION TESTING

THIS DRAWING IS UNPUBLISHED. RELEASED FOR PUBLICATION 2007 COPYRIGHT 2007 BY TYCO ELECTRONICS CORPORATION. ALL RIGHTS RESERVED.		DWN C. VALENTIN 21NOV2007		Tyco Electronics Harrisburg, PA 17105-3608	
DIMENSIONS: mm		CHK E. BRIGHT 21NOV2007		NAME IX3 CAGE ASSEMBLY, W/ LIGHT PIPE BRACKET, BEHIND BEZEL, QSFP	
TOLERANCES UNLESS OTHERWISE SPECIFIED: 9 PLC ±.1 1 PLC ±0.1 2 PLC ±0.1 3 PLC ±0.013 4 PLC ±0.0001 ANGLES ±.1		APVD E. BRIGHT 21NOV2007		PRODUCT SPEC 108-2286	
MATERIAL		APPLICATION SPEC 114-13218		SIZE A100779	
FINISH		WEIGHT		DRAWING NO C=2007473	
CUSTOMER DRAWING		SCALE 3:1		SHEET 3 OF 4	
				REV C	



3.4 MIN  $\triangle 3$   
 C OF FINAL ROW OF HOLES  
 TO C OF FIRST ROW OF HOLES  
 FOR NEXT ADJACENT CAGE

**THIS PRODUCT HAS NOT COMPLETED VALIDATION/QUALIFICATION TESTING**

<small>THIS DRAWING IS THE PROPERTY OF TYCO ELECTRONICS CORPORATION IT IS TO BE KEPT IN CONFIDENTIALITY AND NOT REPRODUCED OR COPIED WITHOUT THE WRITTEN PERMISSION OF TYCO ELECTRONICS CORPORATION SHOULD BE CONTROLLED BY THE LOWEST LEVEL DESIGNED</small>						DWN 21NOV2007 VALENTIN I		Tyco Electronics Harrisburg, PA 17105-3608	
DIMENSIONS:  mm		TOLERANCES, UNLESS OTHERWISE SPECIFIED: P L C ± P L C +0.1 P L C -0.1 P L C ±0.013 P L C ±0.001 ANGLES ±°		CHG 21NOV2007 E BRIGHT APD BRIGHT 21NOV2007		NAME IX3 CAGE ASSEMBLY, W/ LIGHT PIPE BRACKET, BEHIND BEZEL, QSFP			
		PRODUCT SPEC 108-2286 APPLICATION SPEC 114-13218		WEIGHT -		SIZE CAGE CODE DRAWING NO A100779C=2007473		RESTRICTED TO -	
MATERIAL -		FINISH -		CUSTOMER DRAWING		SCALE 3:1 SHEET 4 OF 4 REV C			