

THIS DRAWING IS A CONTROLLED DOCUMENT FOR SOURIAU USA, INC. IT IS SUBJECT TO CHANGE WITHOUT NOTIFICATION. CONTACT THE DOCUMENT CONTROL CENTER FOR THE LATEST REVISION.

C

B

THE INFORMATION CONTAINED IN THIS DRAWING IS CONFIDENTIAL AND MAY NOT BE DISCLOSED WITHOUT WRITTEN CONSENT FROM SOURIAU USA, INC.

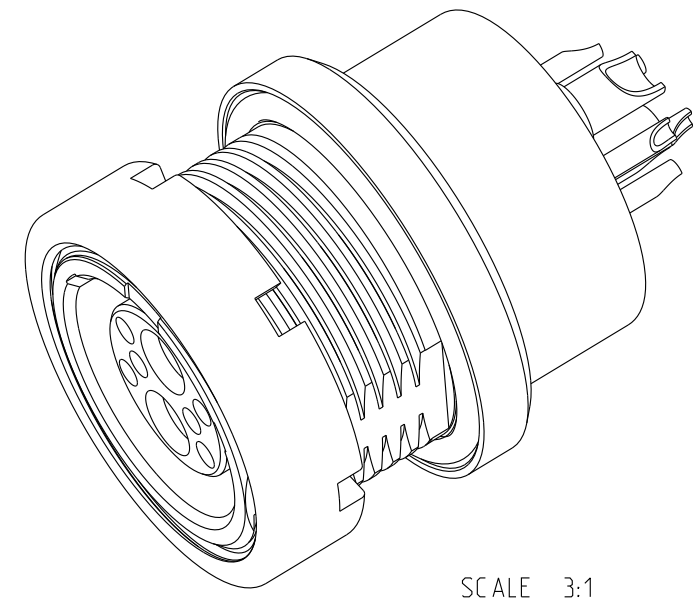
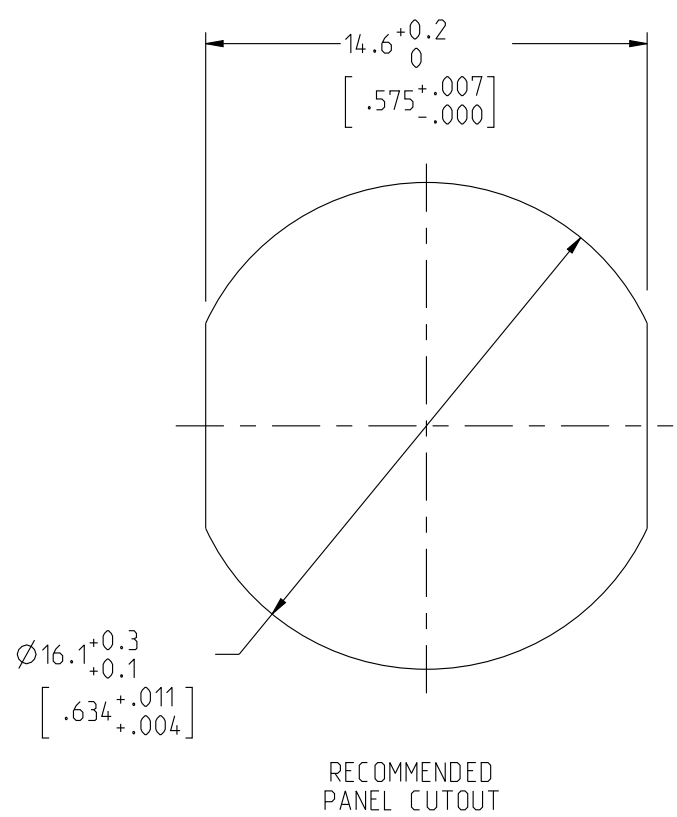
PRO-E

4

3

2

1



NOTES :

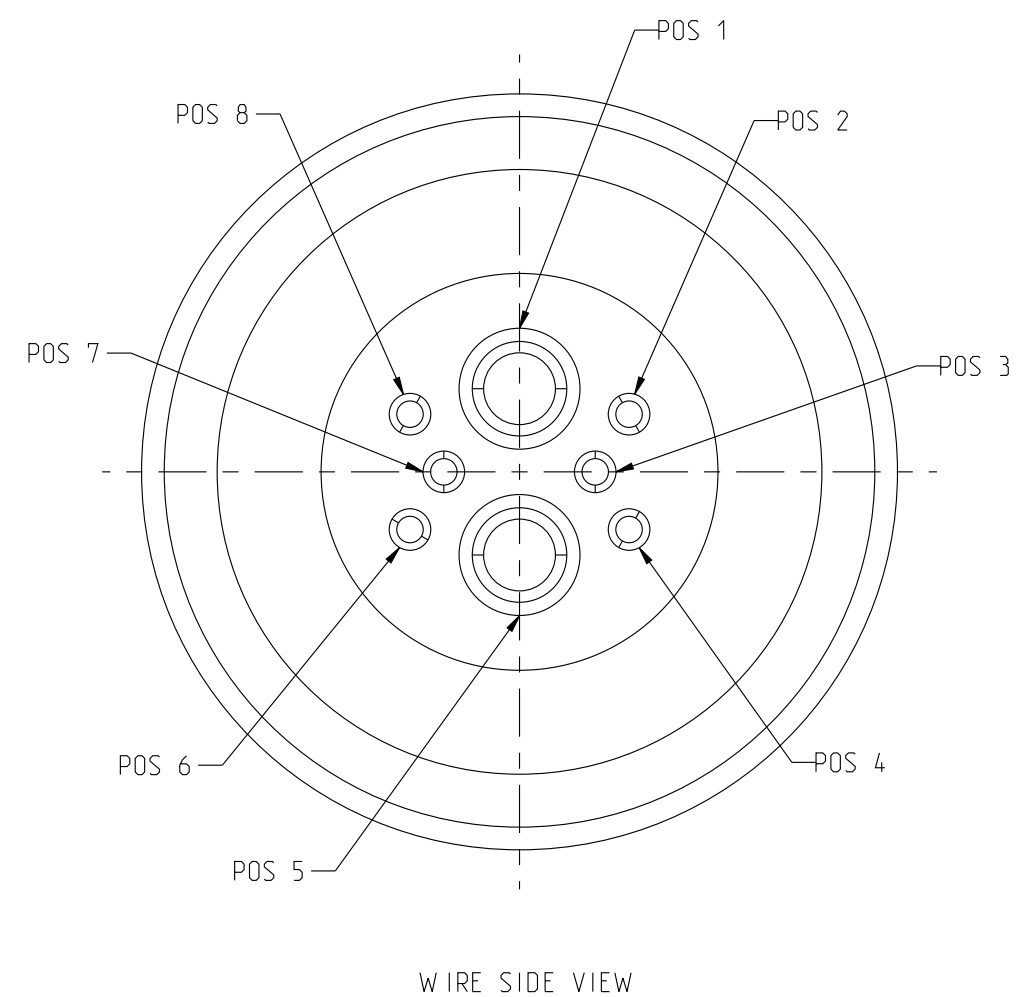
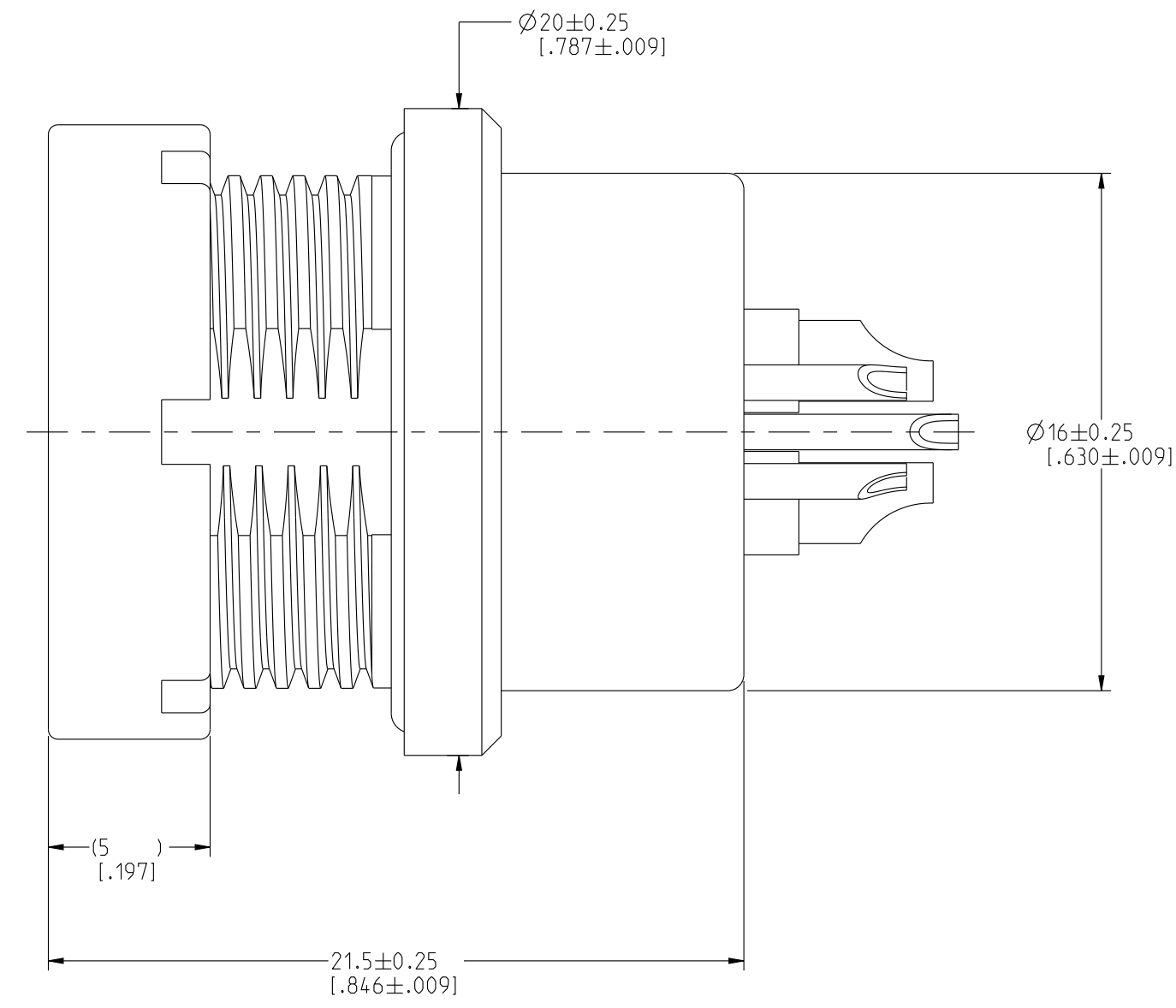
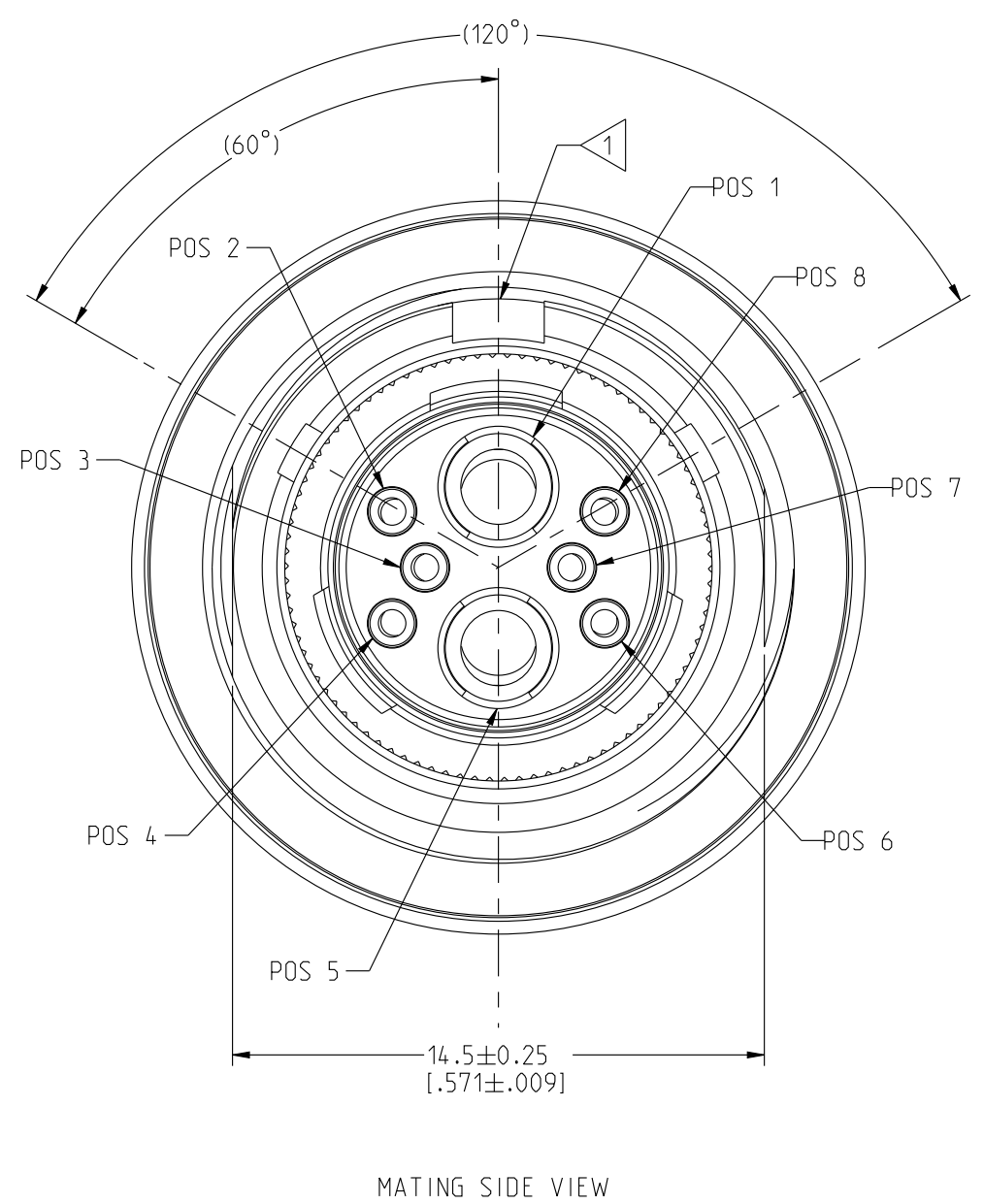
- 1. RED BAND FOR "T" KEYING IDENTIFICATION.
- 2. CONNECTOR IS RoHS COMPLIANT.

MATERIAL

- SHELL & NUT : BRASS CuZn40Pb3 (C38500/C36000)
- SHIELDING RING : COPPER ALLOY (PROPRIETARY)
- SOCKET CONTACT : COPPER NICKEL (CDA C 19150)
- CONTACT TERMINATION : SOLDER CUP
- CLIP : BERYLLIUM COPPER CuBe1.9 (C17200/C36000)
- INSULATOR : PEEK WITH 15% GLASS FILLED, COLOR BROWN
- O-RING SEALS : SILICONE RUBBER
- POTTING SEAL : EPOXY POTTING COMPOUND

FINISH

- SHELL & NUT : BLACK CHROME OVER NICKEL UNDERCOAT
- SHIELD RING : NICKEL
- SOCKET CONTACTS : GOLD OVER NICKEL



A	RELEASED PER ECN 11637	SSF 02-13-12	SDH 02-13-12
REV	DESCRIPTION	BY DATE	CHKD DATE

DRAWING TITLE			
JDX, SIZE 2, 8 POSITION - HYBRID, ER RECEPTACLE, 'T' KEYING			
CAT NO. JDXER2T001FSNC			
CAGE NO: 09922	SIZE: C	APPROVAL	
CUSTOMER	INTERPRET THIS DRAWING IN ACCORDANCE WITH ASME Y14.5M - 1994.	DRAWN: TJS	08-20-11
		CHKD: SDH	08-20-11
		DSGN: SDH	08-20-11
		MFG: DH	08-20-11
		QC: BB	08-20-11
DRAWING SCALE: 5:1		DRAWING NO. REV	
JDXER2T001FSNC		A	
www.souriau.com		1 OF 2	

LINEAR MEASURE:	
mm (INCH)	mm (INCH)
THIRD ANGLE PROJECTION	
TOLERANCES UNLESS OTHERWISE SPECIFIED	
No. OF PLACES	mm [INCH]
WHOLE No.	±0.5 [±.02]
ONE PLACE	±0.2 [±.008]
TWO PLACES	±0.1 [±.004]
ANGLES ±1°	

4

3

2

1

PRO-E

4

3

2

1

DWG. NO.
JDXER2T001FSNC

PERFORMANCE CHARACTERISTICS

ELECTRICAL

EMI SHIELDING : (60dB MIN. UP TO 100MHz) PER ANSI-EIA-364-D METHOD 66
(35dB MIN. UP TO 1GHz)

INSULATION RESISTANCE : >500MΩ PER ANSI-EIA-364-D METHOD 21

MECHANICAL

ENDURANCE : 2500 CYCLES AS PER MIL-STD 1344A, METHOD 2016.1

ENVIRONMENTAL

THERMAL SHOCK : -40°C TO +125°C (-40°F TO +257°F) DURATION 5 CYCLES
PER ANSI-EIA-364-D METHOD 32

MECHANICAL SHOCK : 50 g , DURATION 6 ms; PER MIL-STD 1344A, METHOD 2004.1

VIBRATIONS : 10 TO 2000Hz g = 15g, PER MIL-STD 1344A, METHOD 2005.1

RANDOM VIBRATIONS : PER ANSI-EIA-364-D METHOD 28, TEST CONCISON 4

ALTITUDE IMMERSION : 3 CYCLES (3*30MIN)

HUMIDITY : 240 HOURS @ 40°C 90% RH PER ANSI-EIA-364-D METHOD 31

PROTECTION INDEX : IP 68 PER IEC 529 METHOD 14.2.8

OPERATING TEMPERATURE : -40°C TO +125°C (-40°F TO +257°F) DURATION 5 CYCLES

FLUID RESISTANCE : PER ANSI-EIA-364-D METHOD 10
FLUIDS TESTED:
KEROSENE JP8 (NATO CODE F34)
GASOLINE ASTM D 4814
MINERAL OIL (NATO CODE H515)

THIS DRAWING IS A CONTROLLED DOCUMENT FOR SOURIAU USA, INC. IT IS SUBJECT TO CHANGE WITHOUT NOTIFICATION. CONTACT THE DOCUMENT CONTROL CENTER FOR THE LATEST REVISION.

C

B

THE INFORMATION CONTAINED IN THIS DRAWING IS CONFIDENTIAL AND MAY NOT BE DISCLOSED WITHOUT WRITTEN CONSENT FROM SOURIAU USA, INC.

D

C

B

A

4

3

2

1

PRO-E

DRAWING TITLE JDX, SIZE 2, 8 POSITION - HYBRID, ER RECEPTACLE, 'T' KEYING		DRAWN: TJS 08-20-11	
CAT NO. JDXER2T001FSN		CHKD : SDH 08-20-11	
CAGE NO: 09922	SIZE: C	DSGN : SDH 08-20-11	
CUSTOMER	INTERPRET THIS DRAWING IN ACCORDANCE WITH ASME Y14.5M - 1994.	MFG : DH 08-20-11	
		QC : BB 08-20-11	
		DRAWING SCALE: 5:1	
		DRAWING NO.	REV
		JDXER2T001FSNC	A
		2 OF 2	

LINEAR MEASURE:	
THIRD ANGLE PROJECTION	
TOLERANCES UNLESS OTHERWISE SPECIFIED	
No. OF PLACES	mm [INCH]
WHOLE No.	±0.5 [±.02]
ONE PLACE	±0.2 [±.008]
TWO PLACES	±0.1 [±.004]
ANGLES ±1°	

