

THIS DRAWING IS A CONTROLLED DOCUMENT FOR SOURIAU USA, INC. IT IS SUBJECT TO CHANGE WITHOUT NOTIFICATION. CONTACT THE DOCUMENT CONTROL CENTER FOR THE LATEST REVISION.

C

B

THE INFORMATION CONTAINED IN THIS DRAWING IS CONFIDENTIAL AND MAY NOT BE DISCLOSED WITHOUT WRITTEN CONSENT FROM SOURIAU USA, INC.

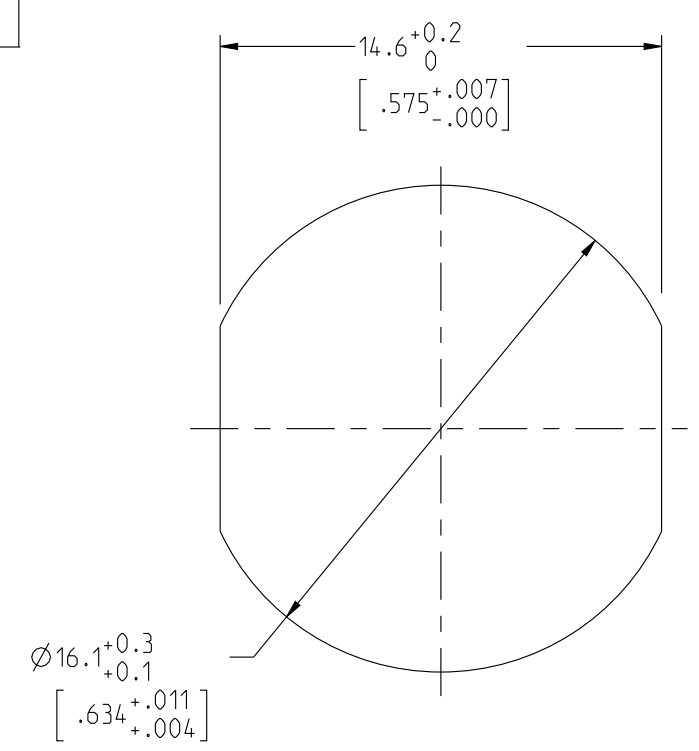
PRO-E

4

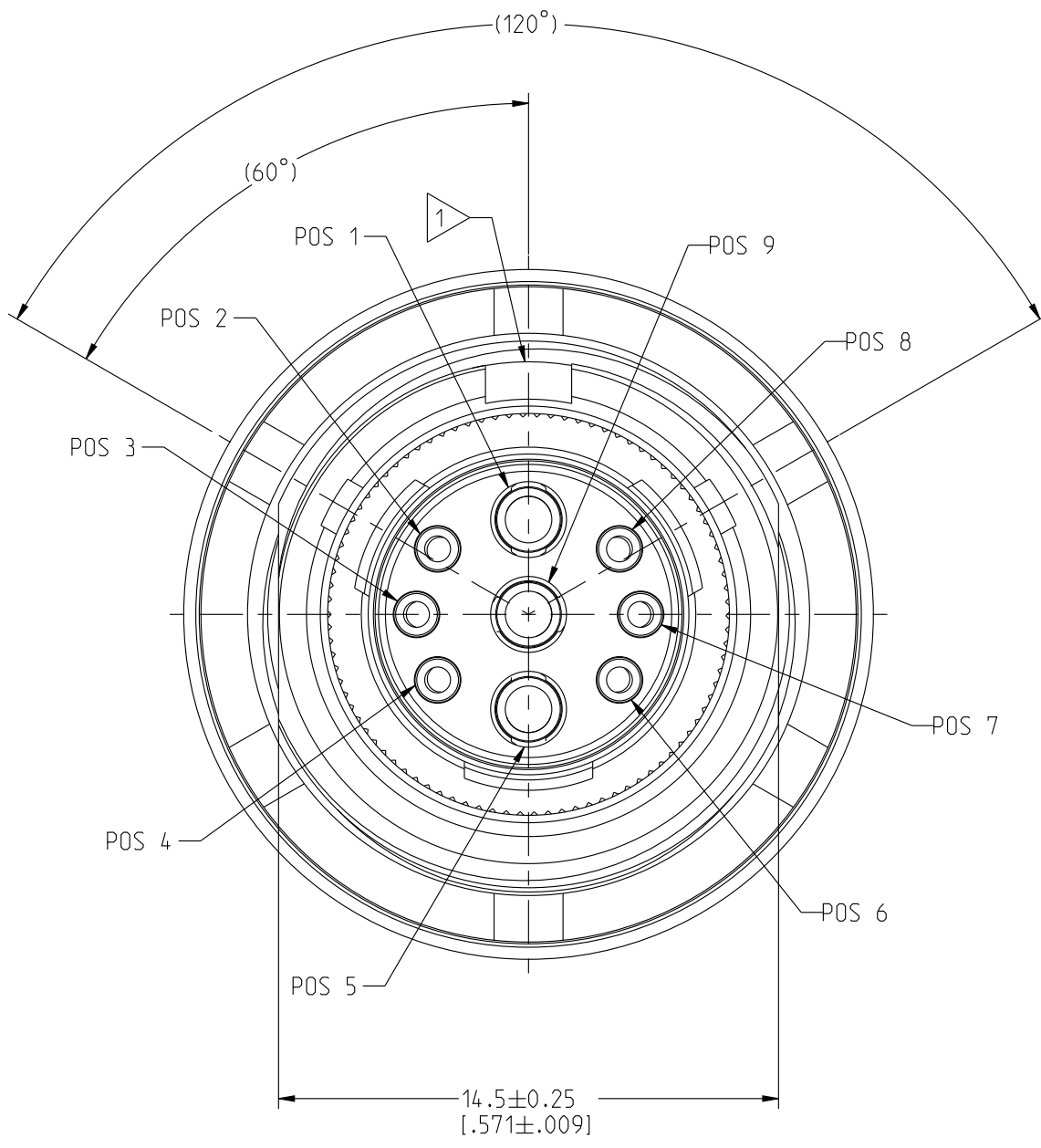
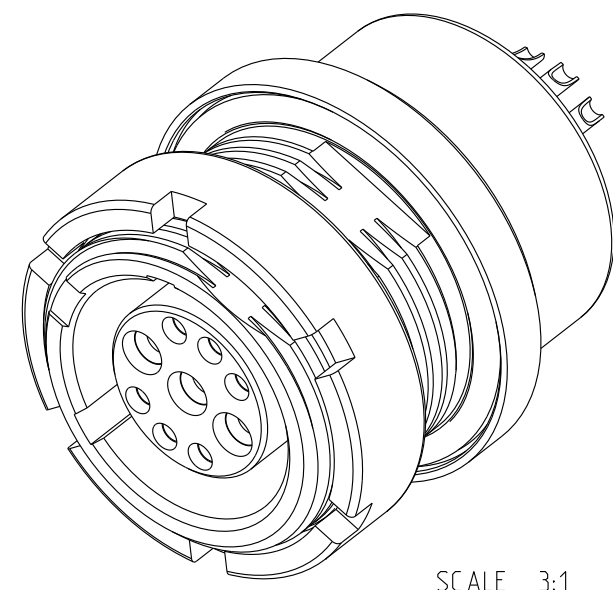
3

2

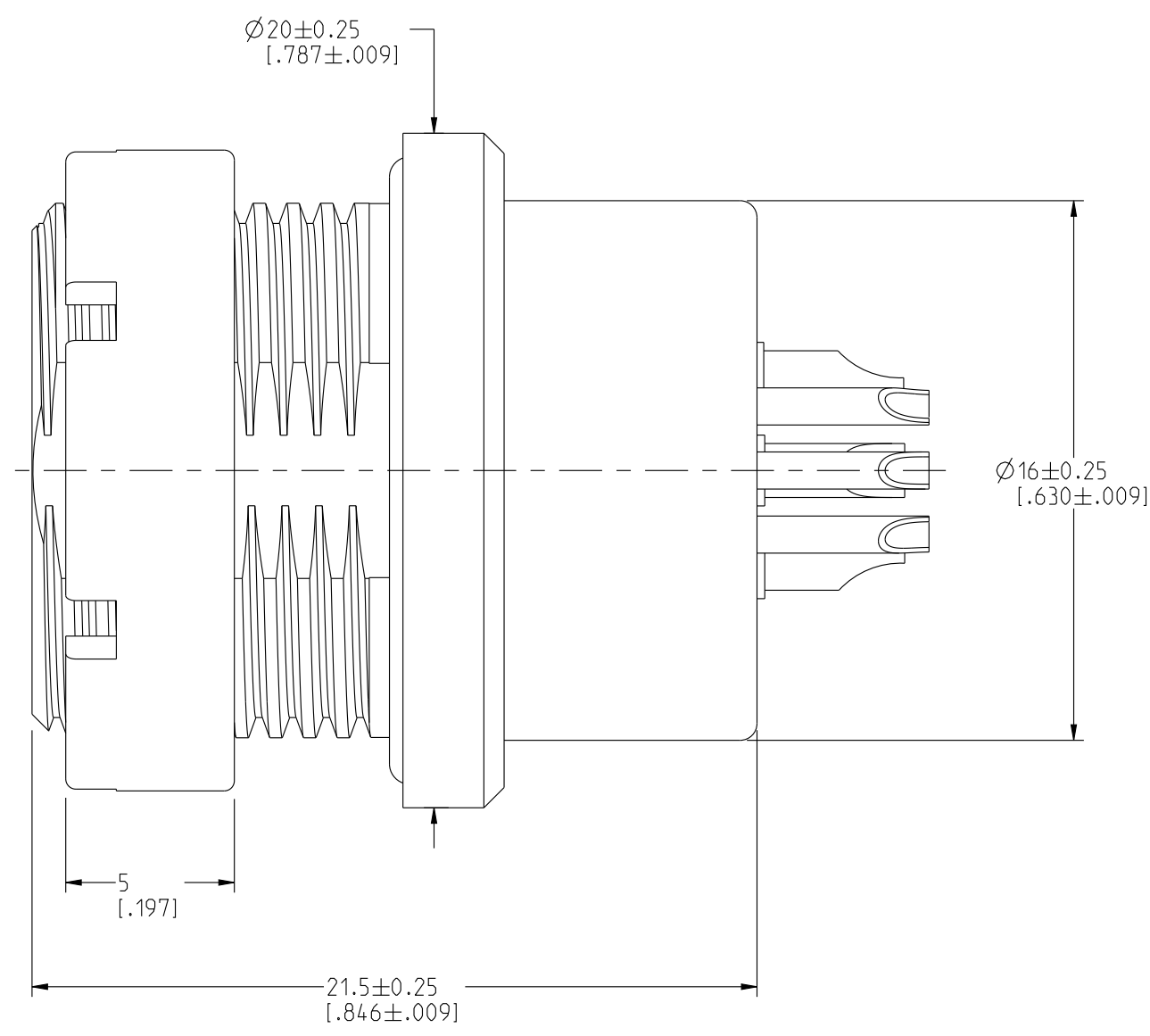
1



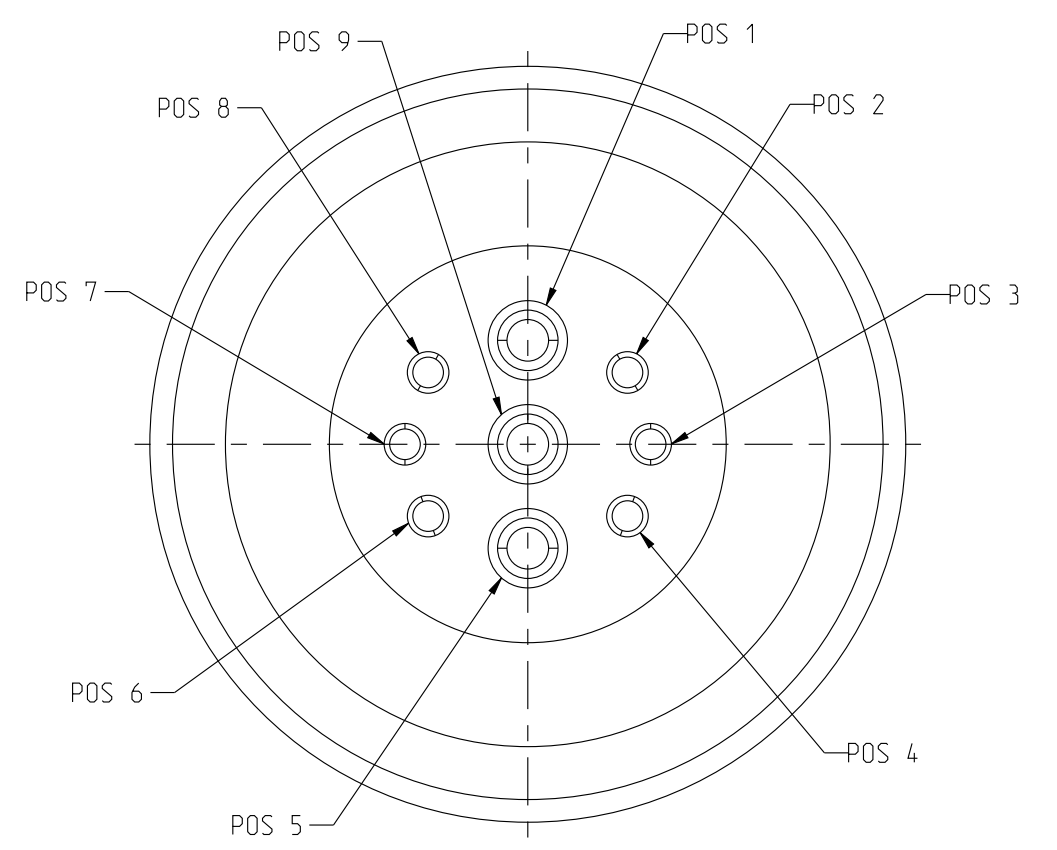
RECOMMENDED PANEL CUTOUT



MATING SIDE VIEW



WIRE SIDE VIEW



WIRE SIDE VIEW

NOTES :

- 1. RED BAND FOR "T" KEYING IDENTIFICATION.
- 2. CONNECTOR IS RoHS COMPLIANT.

MATERIAL

- SHELL & NUT : BRASS CuZn40Pb3 (C38500/C36000)
- SHIELDING RING : COPPER ALLOY (PROPRIETARY)
- SOCKET CONTACT : COPPER NICKEL (CDA C 19150)
- CONTACT TERMINATION : SOLDER CUP
- CLIP : BERYLLIUM COPPER CuBe1.9 (C17200/C36000)
- INSULATOR : PEEK WITH 15% GLASS FILLED, COLOR BROWN
- O-RING SEALS : SILICONE RUBBER
- POTTING SEAL : EPOXY POTTING COMPOUND

FINISH

- SHELL & NUT : BLACK CHROME OVER NICKEL UNDERCOAT
- SHIELD RING : NICKEL
- SOCKET CONTACTS : GOLD OVER NICKEL

A	RELEASED PER ECN 11780	RSK 09-08-12	SDH 09-08-12
REV	DESCRIPTION	BY DATE	CHKD DATE

DRAWING TITLE			
<b>JDX, SIZE 2, 9 POSITION - HYBRID, ER RECEPTACLE, 'T' KEYING</b>			
CAT NO. <b>JDXER2T003FSN</b>			
CAGE NO: 09922	SIZE: C	APPROVAL	
<b>CUSTOMER</b>	INTERPRET THIS DRAWING IN ACCORDANCE WITH ASME Y14.5M - 1994.	DRAWN: RSK	08-04-12
		CHKD: SDH	08-04-12
		DSGN: SDH	08-04-12
		MFG: DH	08-04-12
		QC: BB	08-04-12
DRAWING SCALE: 5:1		DRAWING NO. REV	
www.souriau.com		<b>JDXER2T003FSNC</b> A	
		1 OF 2	

LINEAR MEASURE:	mm (INCH)
THIRD ANGLE PROJECTION	
TOLERANCES UNLESS OTHERWISE SPECIFIED	
No. OF PLACES	mm [INCH]
WHOLE No.	±0.5 [±.02]
ONE PLACE	±0.2 [±.008]
TWO PLACES	±0.1 [±.004]
ANGLES ±1°	

4

3

2

1

D

C

B

A

4

3

2

1

DWG. NO.  
JDXER2T003FSNC

# PERFORMANCE CHARACTERISTICS

## ELECTRICAL

EMI SHIELDING : (60dB MIN. UP TO 100MHz) PER ANSI-EIA-364-D METHOD 66  
(35dB MIN. UP TO 1GHz)

INSULATION RESISTANCE : >500MΩ PER ANSI-EIA-364-D METHOD 21

## MECHANICAL

ENDURANCE : 2500 CYCLES AS PER MIL-STD 1344A, METHOD 2016.1

## ENVIRONMENTAL

THERMAL SHOCK : -40°C TO +125°C (-40°F TO +257°F) DURATION 5 CYCLES  
PER ANSI-EIA-364-D METHOD 32

MECHANICAL SHOCK : 50 g , DURATION 6 ms; PER MIL-STD 1344A, METHOD 2004.1

VIBRATIONS : 10 TO 2000Hz g = 15g, PER MIL-STD 1344A, METHOD 2005.1

RANDOM VIBRATIONS : PER ANSI-EIA-364-D METHOD 28, TEST CONCISON 4

ALTITUDE IMMERSION : 3 CYCLES (3\*30MIN)

HUMIDITY : 240 HOURS @ 40°C 90% RH PER ANSI-EIA-364-D METHOD 31

PROTECTION INDEX : IP 68 PER IEC 529 METHOD 14.2.8

OPERATING TEMPERATURE : -40°C TO +125°C (-40°F TO +257°F) DURATION 5 CYCLES

FLUID RESISTANCE : PER ANSI-EIA-364-D METHOD 10  
FLUIDS TESTED:  
KEROSENE JP8 (NATO CODE F34)  
GASOLINE ASTM D 4814  
MINERAL OIL (NATO CODE H515)

THIS DRAWING IS A CONTROLLED DOCUMENT FOR SOURIAU USA, INC. IT IS SUBJECT TO CHANGE WITHOUT NOTIFICATION. CONTACT THE DOCUMENT CONTROL CENTER FOR THE LATEST REVISION.

C

B

THE INFORMATION CONTAINED IN THIS DRAWING IS CONFIDENTIAL AND MAY NOT BE DISCLOSED WITHOUT WRITTEN CONSENT FROM SOURIAU USA, INC.

D

C

B

A


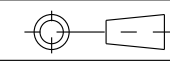
4

3

2

1

PRO-E

LINEAR MEASURE:	 mm (INCH)
THIRD ANGLE PROJECTION	
	
TOLERANCES UNLESS OTHERWISE SPECIFIED	
No. OF PLACES	mm [INCH]
WHOLE No.	±0.5 [±.02]
ONE PLACE	±0.2 [±.008]
TWO PLACES	±0.1 [±.004]
ANGLES ±1°	

DRAWING TITLE											
<b>JDX, SIZE 2, 9 POSITION - HYBRID, ER RECEPTACLE, 'T' KEYING</b>											
CAT NO. <b>JDXER2T003FSN</b>											
CAGE NO: 09922	SIZE: C										
<b>CUSTOMER</b>	<table border="1"> <tr> <td>DRAWN: RSK</td> <td>08-04-12</td> </tr> <tr> <td>CHKD : SDH</td> <td>08-04-12</td> </tr> <tr> <td>DSGN : SDH</td> <td>08-04-12</td> </tr> <tr> <td>MFG : DH</td> <td>08-04-12</td> </tr> <tr> <td>QC : BB</td> <td>08-04-12</td> </tr> </table>	DRAWN: RSK	08-04-12	CHKD : SDH	08-04-12	DSGN : SDH	08-04-12	MFG : DH	08-04-12	QC : BB	08-04-12
	DRAWN: RSK	08-04-12									
CHKD : SDH	08-04-12										
DSGN : SDH	08-04-12										
MFG : DH	08-04-12										
QC : BB	08-04-12										
INTERPRET THIS DRAWING IN ACCORDANCE WITH ASME Y14.5M - 1994.	DRAWING SCALE: 5:1										
	DRAWING NO. REV										
www.souriau.com	<b>JDXER2T003FSNC</b> A										
	2 OF 2										