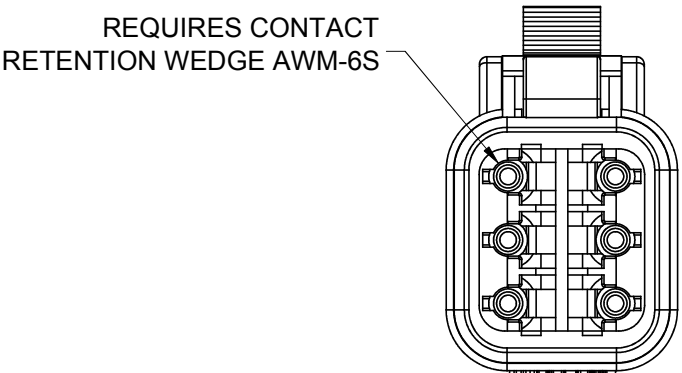
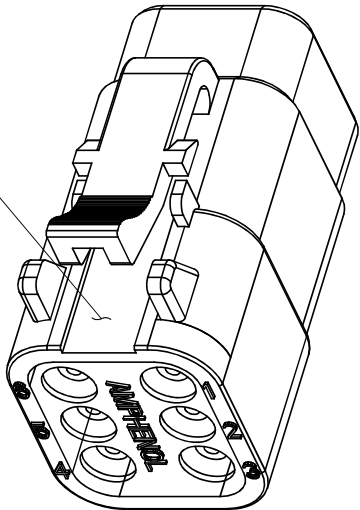
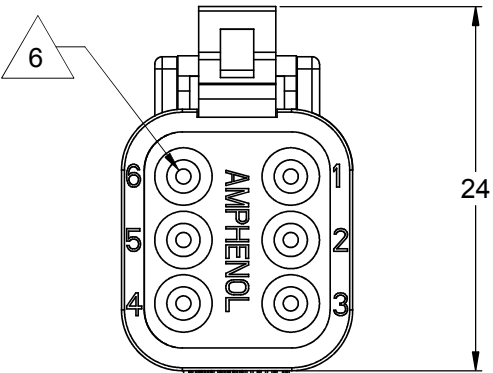
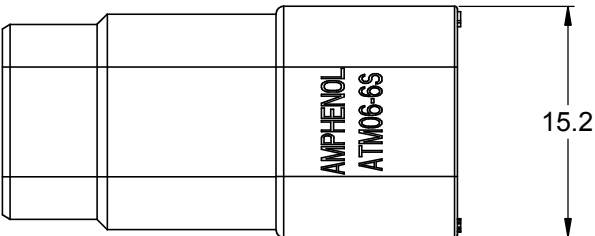
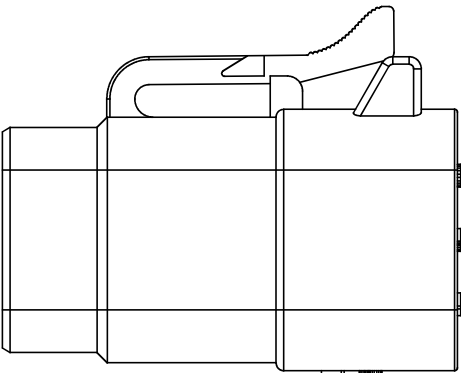
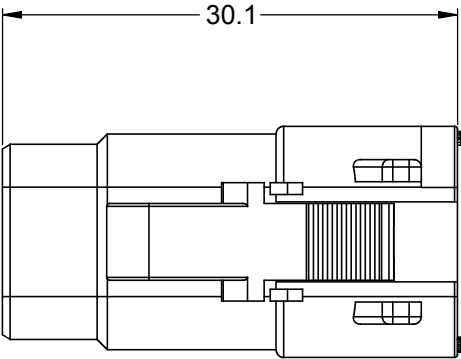


REVISIONS					
REV	ECO	DESCRIPTION	DATE	BY	APPR
A3		RELEASE NEW DWG FORMAT	06/07/13	DRP	



NOTES: UNLESS OTHERWISE SPECIFIED

1. MATERIAL:  
HOUSING: THERMOPLASTIC  
SEAL: SILICONE RUBBER
2. MODIFICATIONS: N/A
3. SPECIFICATIONS:  
3.1 CURRENT RATING: 7.5 AMPS  
3.2 OPERATING TEMPERATURE: -55°C TO +125°C.  
3.3 DIELECTRIC WITHSTANDING VOLTAGE: LESS THAN 2 MILLIAMPS CURRENT LEAKAGE @ 1500VAC.  
3.4 INSULATION RESISTANCE: 1000MΩ MINIMUM @ 25°C.  
3.5 MOISTURE RESISTANCE: IP67  
3.6 MATING CYCLE DURABILITY: 100 CYCLES  
3.7 RoHS COMPLIANT
4. MATING PART: ATM04-6P\* RECEPTACLE.  
( \* = MODIFICATIONS AND/OR COLORS )

5. ALL DIMENSIONS ARE FOR REFERENCE USE ONLY.

6 CONTACT SIZE AND WIRE RANGE:

CONTACT SIZE	MIN. INSUL O.D.	MAX. INSUL O.D.	WIRE RANGE
20	1.35 mm (.053 in)	3.05 mm (.120 in)	18 - 22 AWG

PART NUMBER CHART	
COLOR	PART NUMBER
GREY	ATM06-6S
BLACK	ATM06-6S-BLK
BLUE	ATM06-6S-BLU
BROWN	ATM06-6S-BRN
GREEN	ATM06-6S-GRN
RED	ATM06-6S-RED
WHITE	ATM06-6S-WHT
YELLOW	ATM06-6S-YEL

SEE PART NUMBER CHART			
PART NUMBER		DESCRIPTION	
QUANTITY	MATERIALS LIST		
<div>UNLESS OTHERWISE SPECIFIED</div> <div>1) All dimensions are in metric(mm). 2) Tolerances are as follows: 1 PL DEC ±0.30 2 PL DEC ±0.15 3 PL DEC ±0.08</div> <div>3) Note reference = <div><div>x</div></div></div>		<div>SIGNATURES</div> <div>DRAWN: D.PARKS</div> <div>CHECKED:</div> <div>ENGINEER:</div> <div>APPROVAL: D.PARKS</div> <div>CUSTOMER:</div>	<div>DATE</div> <div>06/07/13</div> <div>06/07/13</div>
<div>MATERIAL SPECIFICATIONS:</div>		<div>SINE Systems Corporation</div> <div>A Subsidiary of Amphenol Corporation 44724 Morley Drive Clinton Township, MI 48036</div>	
<div>PROCESS SPECIFICATIONS:</div>		<div>PLUG, 6 SOCKET, ATM SERIES</div>	
<div>NEXT ASSY:</div>		<div>SIZE</div> <div>B</div>	<div>REVISION</div> <div>A3</div>
		<div>SCALE:</div> <div>NONE</div>	<div>DWG NO:</div> <div>C- ATM06-6S-XXX</div>
		<div>SHEET</div> <div>1</div>	<div>OF</div> <div>1</div>