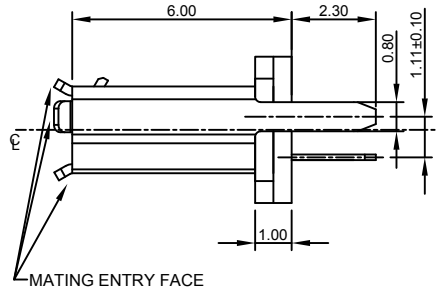
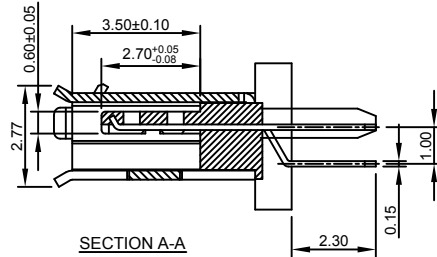
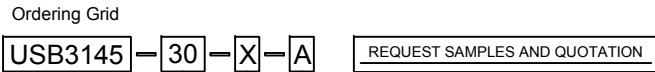


Designed to comply with physical, electrical and environmental requirements of Micro USB Standard (USB2.0)



Note: Recommended for 1.6mm PCB thickness, for thinner PCB's choose USB3130 (B) or USB3105 (A/B).



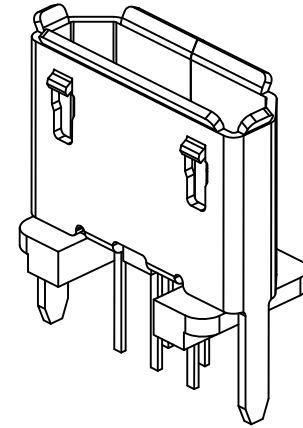
Contact Plating  
30 = 30 $\mu$  Gold

Packing Options  
A = Tape & Reel  
(1300 per reel)

Mating Entry Face  
1 = With Mating Entry Face (Standard)  
0 = Without Mating Entry Face (MOQ = 3900)



Tolerances (Except as noted)		Part Number:-	Date:-
Dimensions in mm		USB3145	02 APR 13
X.X $\pm$ 0.30	X.X° $\pm$ 2°	Description:-	
X.XX $\pm$ 0.20	X.XX° $\pm$ 1°	$\mu$ USB RECEPTACLE, TYPE B, THROUGH HOLE, VERTICAL, WITH THRU HOLE SHELL STAKES	
X.XXX $\pm$ 0.10	X.XXX° $\pm$ 0.5°	© THIS DRAWING IS CONFIDENTIAL AND MUST NOT BE COPIED OR DISCLOSED WITHOUT WRITTEN CONSENT	
Third Angle Projection		Scale	Revision
		NTS	B
		Material	Drawn by
		See Note	ASE
		E & OE	Sheet No.
			1/2



Specifications 规格:

Materials 材料:

Plastic Housing 塑胶外壳: LCP, UL94V-0, Black (黑色)  
Contact Terminal 接触端子: Copper Alloy 铜合金.  
Metallic Shell 金属外壳: Stainless Steel 不锈钢 T=0.25mm.

Plating 电镀:

Underplating 底层电镀: 50 $\mu$  Nickel, 50 $\mu$  镍  
Finish 表面处理: Contact Area 接触面积: 30 $\mu$  Gold plating (镀金)  
Solder Tails 焊接末端: Gold Flash 镀金  
Metallic Shell 金属外壳: Matte Tin 雾锡

Electrical 电气规格:

Voltage Rating 电压额定值: 100 V AC  
Current Rating 电流额定值: Signal (Pins 2,3,4)信号: 1.0 A.  
Power (Pins 1,5)电源: 1.8A.  
Operating Temperature 工作温度: -30°C to +85°C.  
Contact Resistance 接触电阻值: 30m $\Omega$  Max.  
Insulating Resistance 绝缘电阻值: 1000M $\Omega$  Min.  
Dielectric Withstand Voltage 耐电压: 500V AC/Minute

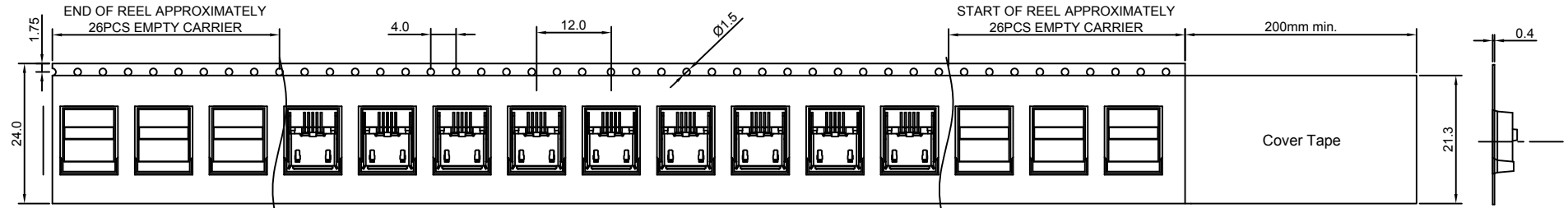
Mechanical 机械性规格:

Mating Force 插入力: 35N Max.  
Unmating Force 拔出力: 8N Min.  $\Delta$   
Durability 耐久性: 10,000 Cycles 次插拔

By	ASE	ASE
DETAIL	DRAWING RELEASE	UNMATING FORCE CHANGE
REV	A	B
DATE	02/04/13	28/05/13

**GCT**  
www.gct.co

Global Connector Technology Ltd. - USB3145:  $\mu$  USB Receptacle, Type B, Through Hole, Vertical, With Through Hole Shell Stakes



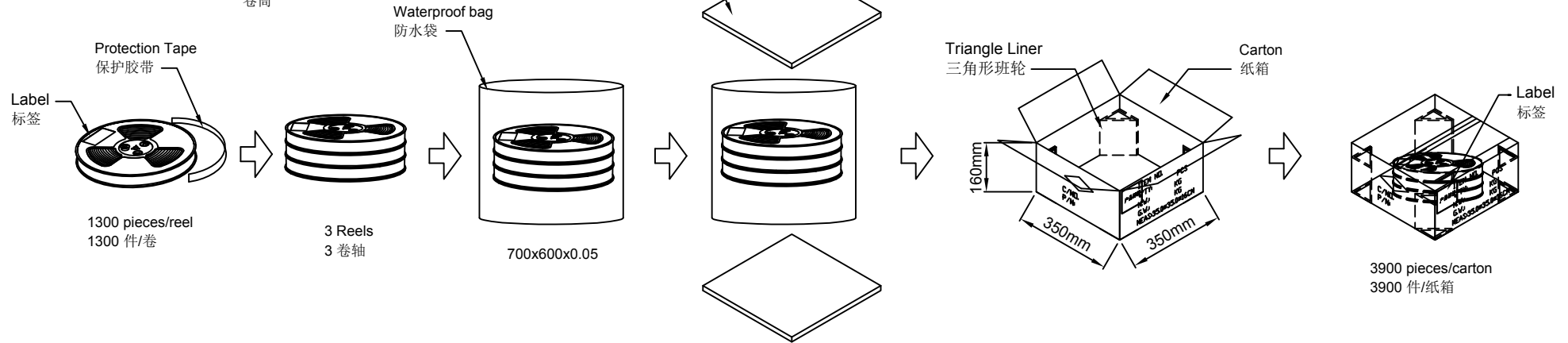
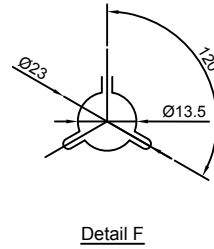
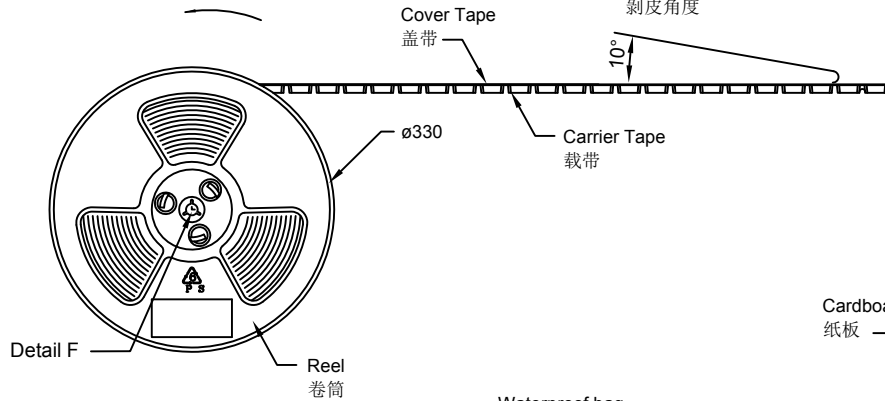
I/O Direction  
卷盤繞逆時針方向轉動

Peel off Angle  
剝皮角度

Products P/N	PCS/Reel	Reels/Carton	PCS/Carton
USB3145	1300	3	3900

Notes注意:  
Peeling off force of top tape: 0.1-1.3N  
(Peeling direction as shown)

Materials材料:  
Carrier Tape: Polystyrene (PS)  
Top Tape: PE  
Reel Tape: Polystyrene (PS)



By	ASE	ASE
DETAIL	DRAWING RELEASE	UNMATING FORCE CHANGE
REV	A	B
DATE	02/04/13	28/05/13



Tolerances (Except as noted)		Part Number:-	Date:-
Dimensions in mm		USB3145	02 APR 13
X.X ± 0.50	X.X° ± 2°	Description:-	
X.XX ± 0.30	X.XX° ± 1°	$\mu$ USB RECEPTACLE, TYPE B, THROUGH HOLE, VERTICAL, WITH THRU HOLE SHELL STAKES	
X.XXX ± 0.20	X.XXX° ± 0.5°	© THIS DRAWING IS CONFIDENTIAL AND MUST NOT BE COPIED OR DISCLOSED WITHOUT WRITTEN CONSENT	
Third Angle Projection		Scale	Revision
		NTS	B

**GCT**  
www.gct.co

Material	Drawn by	Sheet No.
See Note	ASE	E & OE 2/2