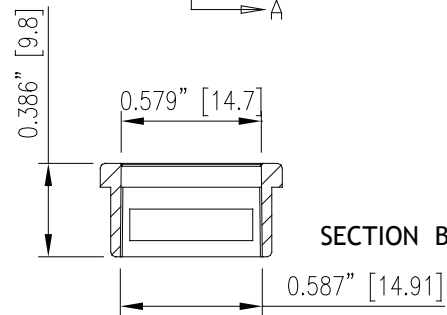
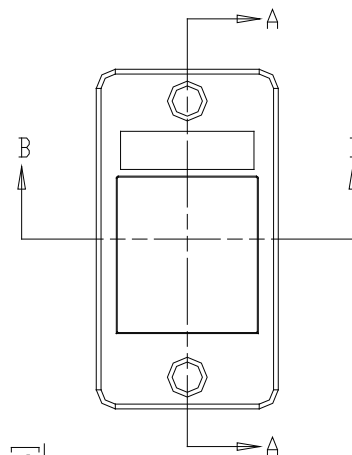
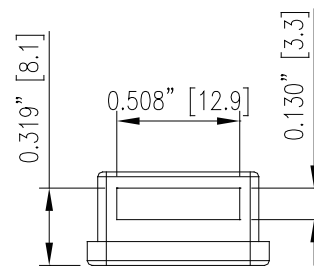
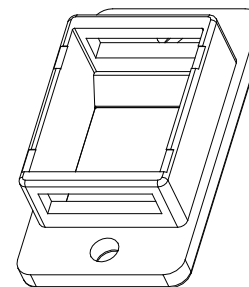
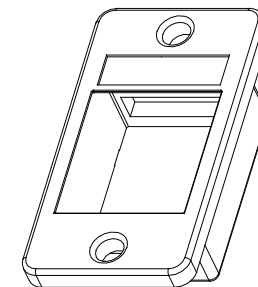




SECTION A-A



SECTION B-B



**MATERIAL**  
Housing: Zinc alloy, Nickel plated  
RoHS compliant

DRAWN BY Autumn Lee					Another quality product from  724-746-9300 • www.blackbox.com				
APPROVED BY Jerry Su									
DIMENSIONS ARE [IN (MM)]					TITLE Panel Mount Bezel Keystone Opening - Silver				
TOLERANCES:					PARTS NO. FMT1000				
~0.8"	~2"	~6"	6"~	ANGLE	REV. 1				
±0.007"	±0.015"	±0.02"	±0.06"	2°	DATE 2011.04.27				
3rd Angle Projection					SCALE X		SHEET 1/1		