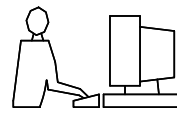
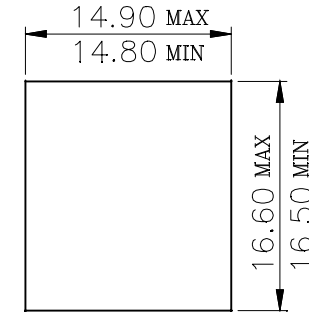
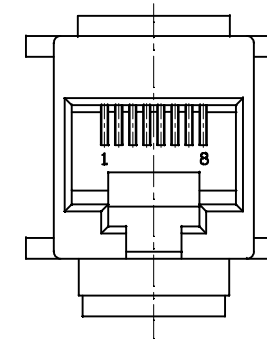
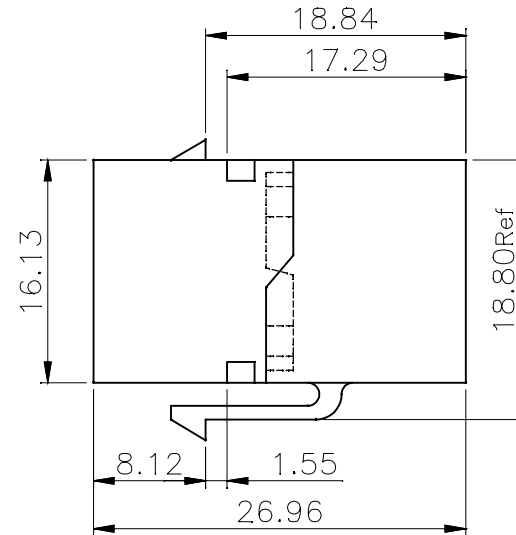
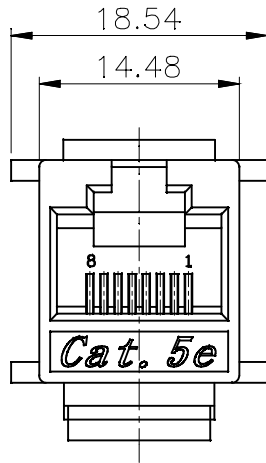


THIS IS A C.A.D. GENERATED DRAWING
DO NOT MAKE MANUAL REVISIONS TO MASTER.

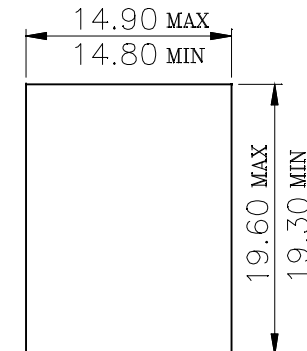
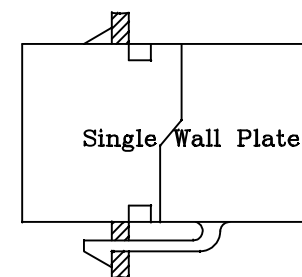
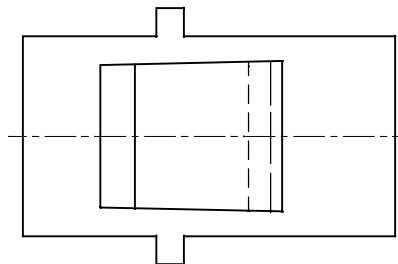
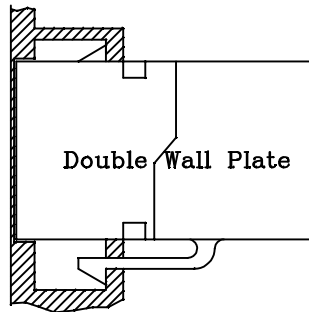


* UNLESS OTHERWISE SPECIFIED TOLERANCES
ON DECIMAL IS: ANGLE ±3°

UNIT: MM
X ±0.50
X.X ±0.38
X.XX ±0.25
X.XXX ±0.10



Front Panel Jack Only Clearance
W/O Latch Feature



Single Panel-Latch Clearance
Panel Thickness 0.062 inch.

1. MATERIALS:

- 1.1 PLASTIC HOUSING: ENGINEERING THERMOPLASTIC
FLAMMABILITY RATING UL 94V-0.
- 1.2 CONTACTS: 0.35MM THICKNESS PHOSPHOR BRONZE.
- 1.3 PLATING: GOLD PLATING OVER NICKEL IN CONTACT.

THESE DRAWINGS AND SPECIFICATIONS ARE THE PROPERTY OF MH CONNECTORS LTD. AND SHALL NOT BE REPRODUCED, COPIED OR USED AS THE BASIS FOR THE MANUFACTURE OR SALE OF APPARATUS WITHOUT WRITTEN PERMISSION.

| | | | |
|----------------------------|--------------------|------------------|--|
| DRAWN HALEY | | DATE 11-13-13 | |
| APPROVED | | DATE | |
| SCALE | SHEET OF 1 OF 1 | REV: 1.0 | |
| DRAWING No MH3101-CAT5e | | | |



THIS SERIES FULLY CONFORMS TO THE EUROPEAN UNION DIRECTIVES 2002/95/EC AND 2002/96/EC FOR RoHS COMPLIANCY.



MH CONNECTORS LTD.