

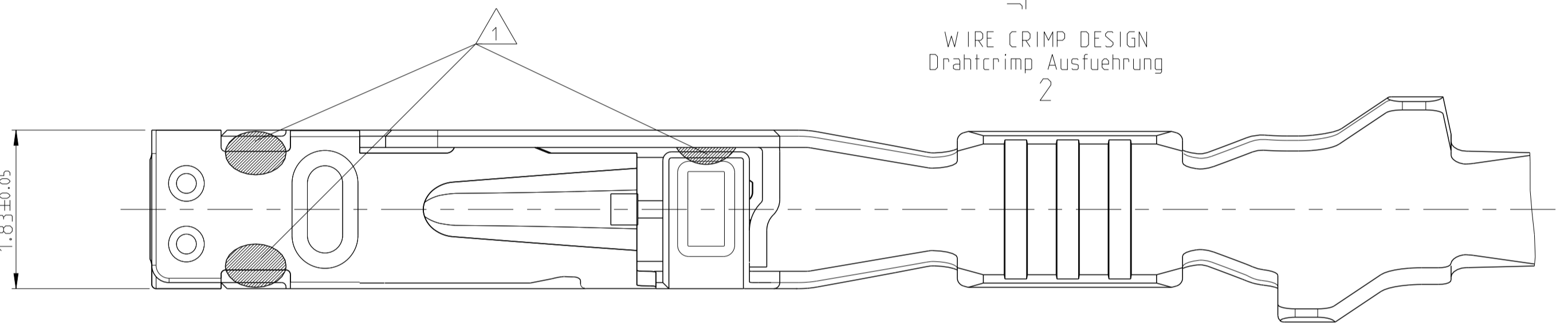
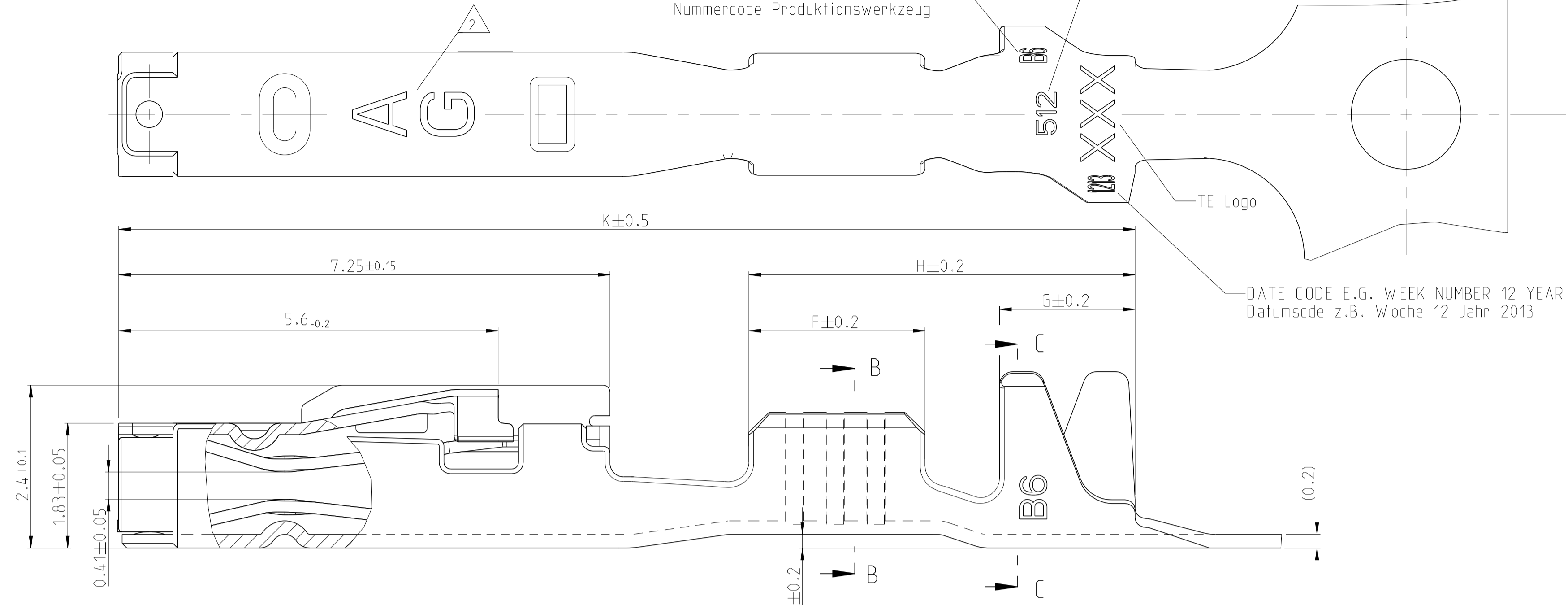
Project No. PRJ-11-000001417	Loc A1	Dist -	REVISIONS			
			REV	DATE	BY	APPV
			B4	22DEC2006	R.M.	-
			C1	14AUG2009	R.M.	-
			C2	07DEC2011	EG	RM
			C3	24APR2013	Abt	Raab

REVISION Aenderungsstand /  
NUMBER CODE PRODUCTIONTOOL  
Nummercode Produktionswerkzeug

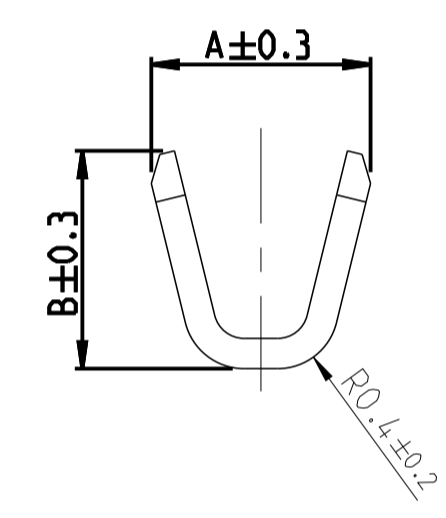
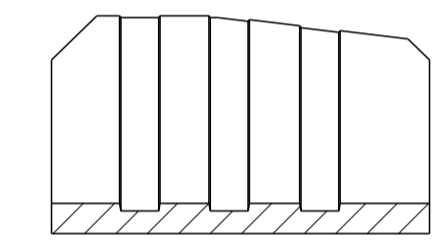
MANUFACTURING LOCATION CODE  
Kennzahl Produktionsstandort

DATE CODE E.G. WEEK NUMBER 12 YEAR 2013  
Datumscode z.B. Woche 12 Jahr 2013

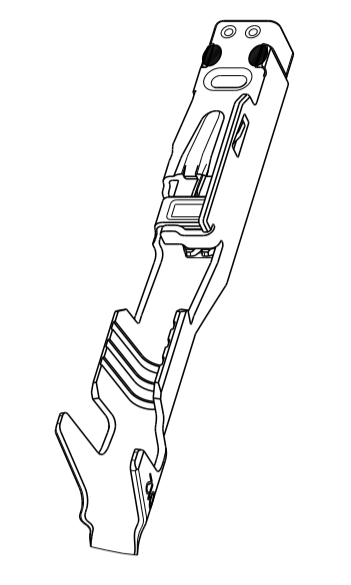
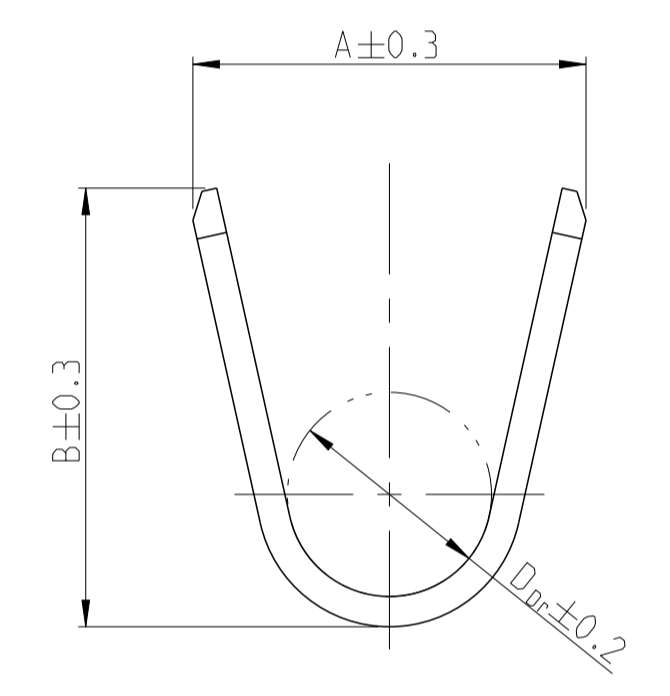
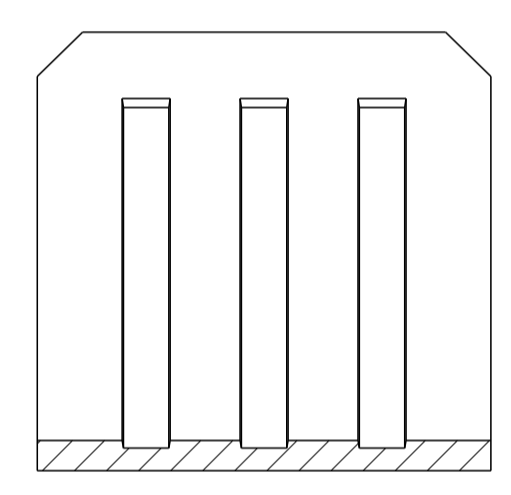
STANDARD APPLICATION  
Standard Anwendung



WIRE CRIMP DESIGN  
Drahtcrimp Ausfuehrung  
1

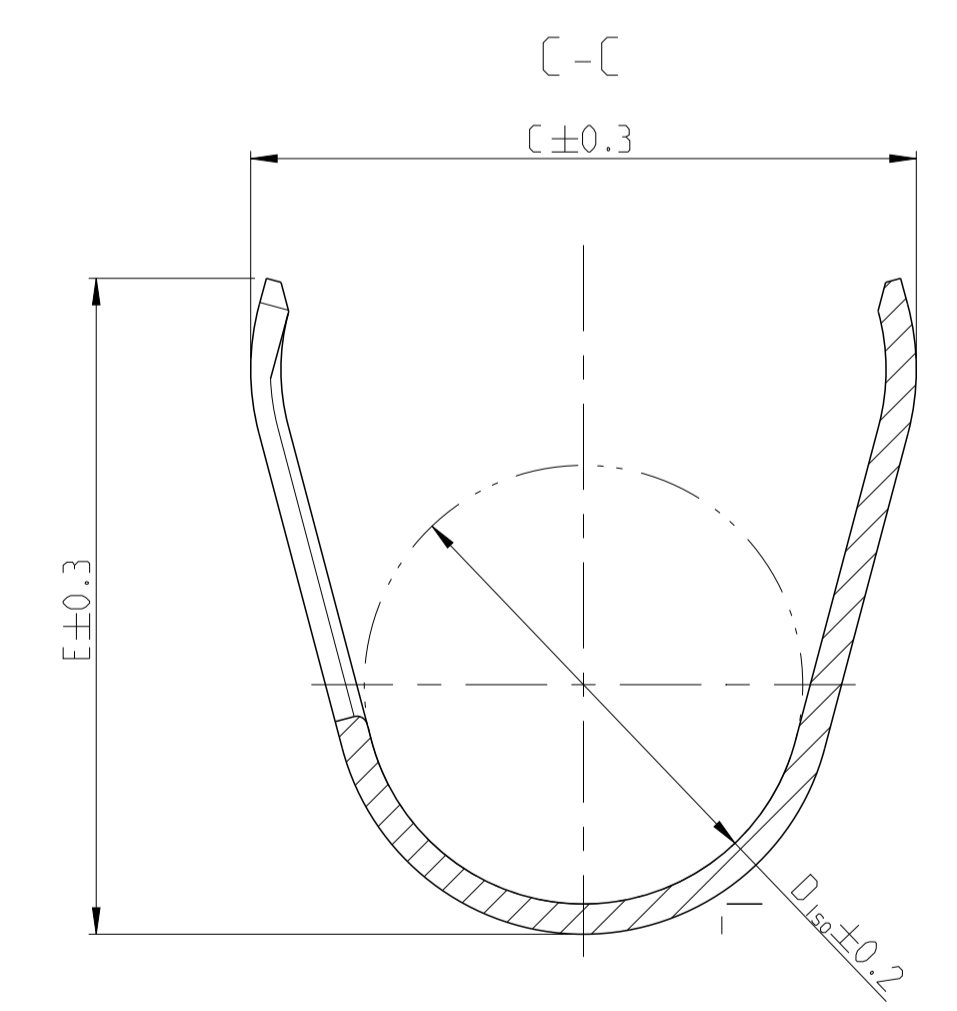
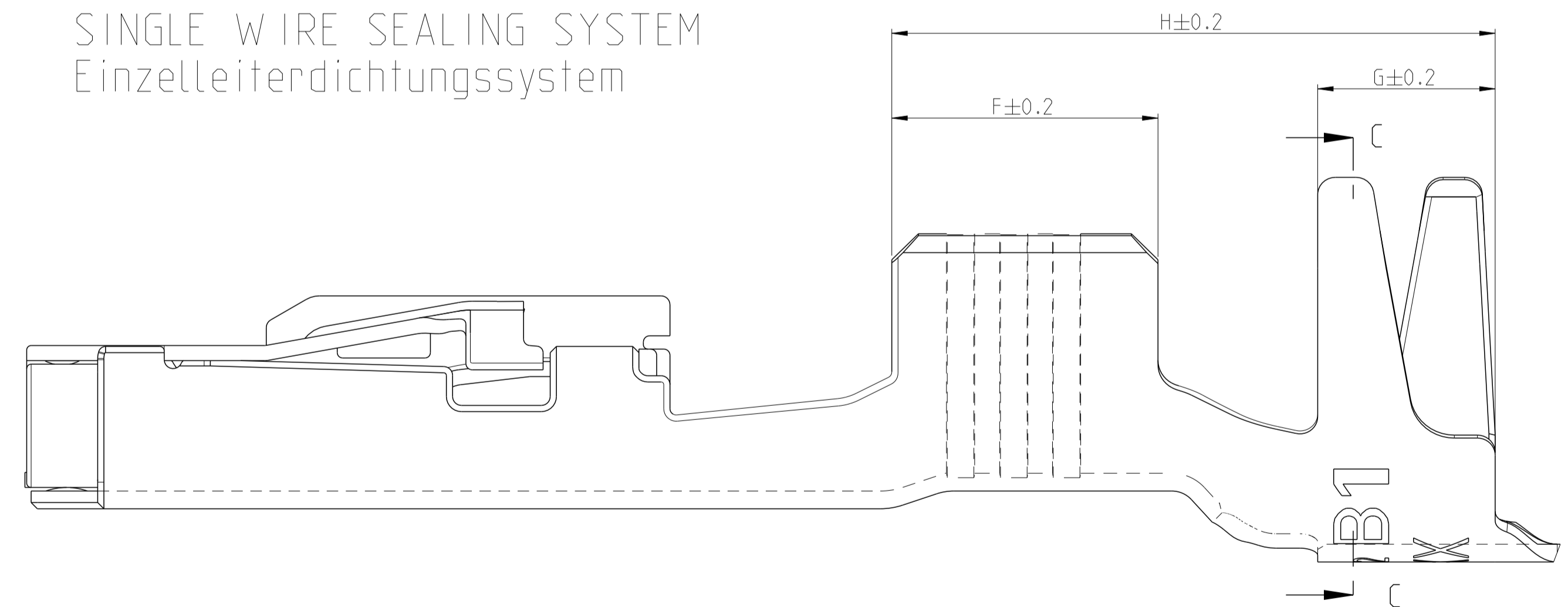


WIRE CRIMP DESIGN  
Drahtcrimp Ausfuehrung  
3



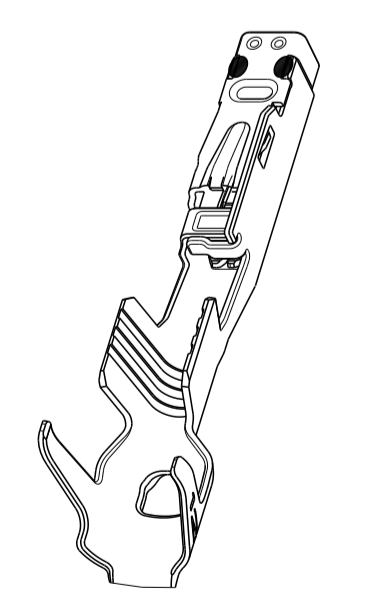
5:1

SINGLE WIRE SEALING SYSTEM  
Einzelleiterdichtungssystem



NOTES  
Bemerkungen

- 1 LASER WELDED  
Lasergeschweisst
- 2 STAMPED INDICATOR FOR PLATING:  
- AU GOLD PLATING  
- AG SILVER PLATING  
- TIN PLATING WITHOUT INDICATOR  
Markierung fuer galvanische Ausfuehrung:  
- AU vergoldet  
- AG versilbert  
- verzinkt: ohne Markierung
- 3 TO BE USED ON TAB  
1.2±0.1 x 0.6±0.03 mm  
geeignet fuer Flachstecker  
1.2±0.1 x 0.6±0.03 mm



5:1

THIS DRAWING IS A CONTROLLED DOCUMENT.		OWN E. Horn	11NOV2011	<b>STE</b> TE Connectivity
DIMENSIONS: mm		CHK R. Meier	11NOV2011	
TOLERANCES UNLESS OTHERWISE SPECIFIED: mm		APPV V. Seipel	11NOV2011	NAME MCON-1.2 LL (LOCKING-LANCE) MCON-1.2 LL (RASTFEDER)
MATERIAL		PRODUCT SPEC 108-18782	APPLICATION SPEC 114-18464	SIZE A1
FINISH		WEIGHT 0.18 g	Customer Drawing	RESTRICTED TO -
		SCALE 20:1	SHEET 1 of 2	REV C3

LOC		DIST		REVISIONS				
A1	-	P	LTN	DESCRIPTION	DATE	OWN	APVD	
-	-	-	-	SEE SHEET 1	-	-	-	

VERSION / Ausführung	REV.	RANGE Bereich	WIRE-SIZE RANGE INSULATION DIAMETER Leiterquerschnitt Isolationsdurchmesser	AWG	mm <sup>2</sup>	BODY Kontakt-körper	SPRING Kontakt-feder	BODY Kontakt-körper	SPRING Kontakt-feder	DESIGN WIRE-CRIMP Ausführung Draht-Crimp	A	B	D <sub>Dr</sub>	C	E	D <sub>ISO</sub>	F	G	H	J	K	Ø3.55 [mm]	Ø3.95 [mm]	BLINDPLUG ORDER NO. Bestell-Nr.	APPLICATION TOOLS Verarbeitungswerkzeuge
<p><b>7- VARIANTS FOR NEW APPLICATIONS</b></p>																									
<p>SEE APPLICATION SPEC. 114-18464 SIEHE VERARBEITUNGSSPEZ. 114-18464</p>																									

VERSION / Ausführung	REV.	RANGE Bereich	WIRE-SIZE RANGE INSULATION DIAMETER Leiterquerschnitt Isolationsdurchmesser	AWG	mm <sup>2</sup>	BODY Kontakt-körper	SPRING Kontakt-feder	BODY Kontakt-körper	SPRING Kontakt-feder	DESIGN WIRE-CRIMP Ausführung Draht-Crimp	A	B	D <sub>Dr</sub>	C	E	D <sub>ISO</sub>	F	G	H	J	K	Ø3.55 [mm]	Ø3.95 [mm]	BLINDPLUG ORDER NO. Bestell-Nr.	APPLICATION TOOLS Verarbeitungswerkzeuge
<p><b>0- VARIANTS SUPERSEDED BY 7- VARIANTS (SEE TABLE ON TOP) NOT FOR NEW APPLICATIONS</b></p>																									
<p>SEE APPLICATION SPEC. 114-18464 SIEHE VERARBEITUNGSSPEZ. 114-18464</p>																									

## 7- VARIANTS FOR NEW APPLICATIONS

- NOTES  
Bemerkungen
- 4 ONLY FOR FLR-WIRE SEE DIN 72551, PART 6 AND AWG WIRE ACCORDING DC-SPEC: MS-8288 ; MS-7889 ; MS-9532  
Nur fuer FLR-Leitung nach DIN 72551, Teil 6 und AWG Leitung nach DC-SPEC: MS-8288 ; MS-7889 ; MS-9532
  - 5 SPRING PRE TIN SnAg 1.0 TO 3.0µm  
Kontaktfeder verzinkt SnAg 1.0 bis 3.0µm
  - 6 SPRING GOLD PLATED MIN. 0.8µm (only contact area)  
Kontaktfeder galv. vergoldet min.0.8µm (nur Kontaktzone)
  - 7 SPRING SILVER PLATED 2.0 TO 5.0µm (only contact area)  
Kontaktfeder galv. versilbert 2.0 bis 5.0µm (nur Kontaktzone)
  - 8 BODY PRE TIN Sn 1.0 TO 3.0µm  
Kontaktkoerper vorverzinkt Sn 1.0 bis 3.0µm
  - 9 REINFORCED WIRE ACCORDING TO LV 112-4  
Zugverstaerkte Leitung nach LV 112-4

## 0- VARIANTS SUPERSEDED BY 7- VARIANTS (SEE TABLE ON TOP) NOT FOR NEW APPLICATIONS

THIS DRAWING IS A CONTROLLED DOCUMENT.		OWN E. Horn 11NOV2011		TE Connectivity	
DIMENSIONS: mm		CHK R. Meier 11NOV2011		NAME MCON-1.2 LL (LOCKING-LANCE) MCON-1.2 LL (RASTFEDER)	
TOLERANCES UNLESS OTHERWISE SPECIFIED:		APVD V. Seigel 11NOV2011	SIZE 108-18782 APPLICATION SPEC 114-18464		
MATERIAL: -		WEIGHT: -	CAGE CODE 00779		RESTRICTED TO -
FINISH: -		DRAWING NO. 1452674		SCALE: - SHEET 2 OF 2 REV: C3	