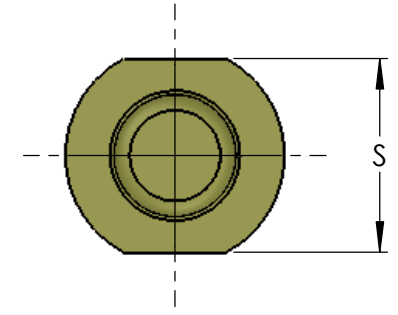
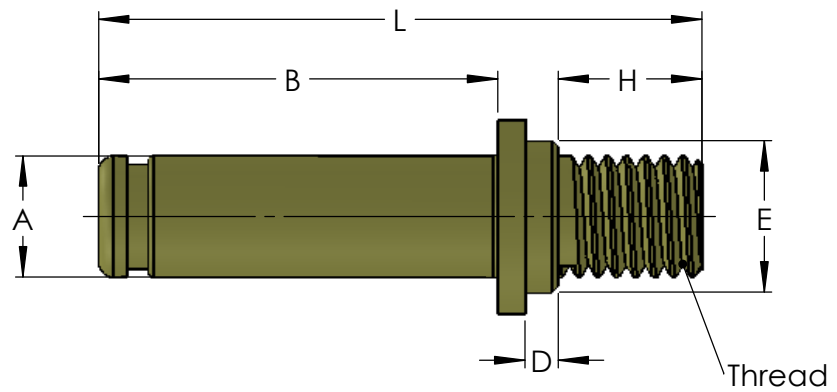
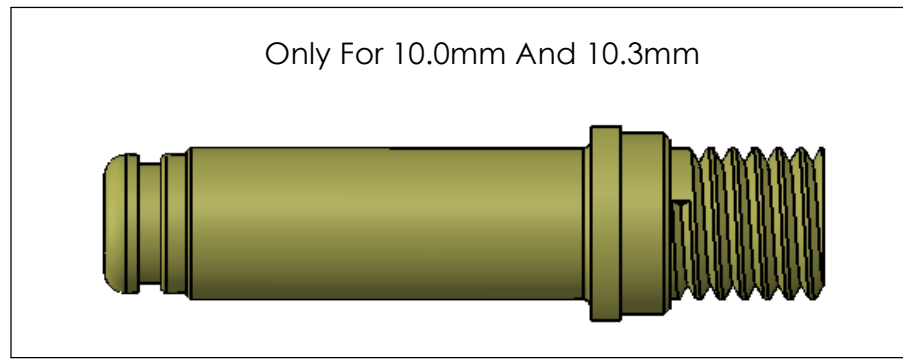


DO NOT READ SCALE FROM PRINT
 INTERPRET THIS DWG. PER ANSI Y14
 THIS DRAWING IS THE PROPERTY OF
 AMPHENOL TECHNICAL PRODUCTS INTERNATIONAL
 ANY UNSPECIFIED USE OR COPYING IN WHOLE OR IN PART
 IS STRICTLY PROHIBITED WITHOUT THE WRITTEN PERMISSION OF
 AMPHENOL TECHNICAL PRODUCTS INTERNATIONAL.

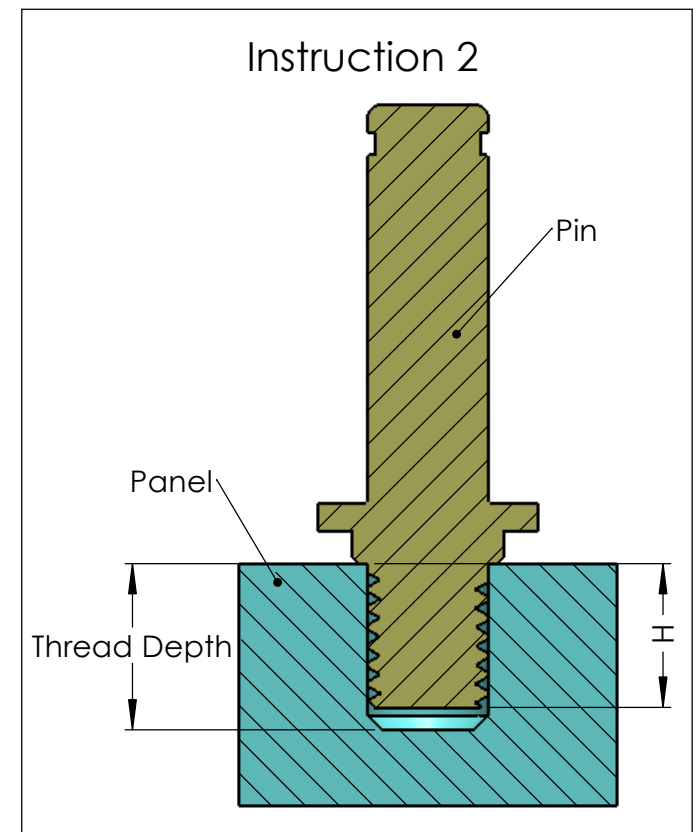
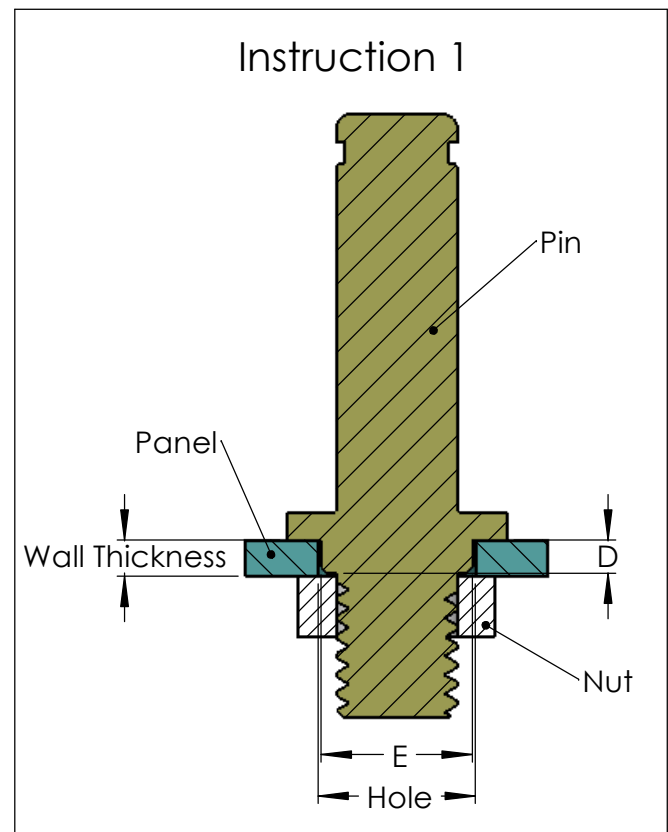
CUSTOMER DRAWING



Note:
 Material: Brass.

Specification

Part Number	Pin Size	A (mm)	B (mm)	L (mm)	D (mm)	E (mm)	H (mm)	S (mm)	Thread	Current(A)	Surface finish
RL9036-01	3.6	3.6	17.5	25.3	1.5	4.8	5	5.3	M3 X 0.5 - 6G	70	Silver
RL9036-02											Tin
RL9036-03											Nickel
RL9057-01	5.7	5.7	21.1	31.9	1.5	6.4	8	7.8	M5 X 0.8 - 6G	120	Silver
RL9057-02											Tin
RL9057-03											Nickel
RL9080-01	8.0	8.0	26.4	39.7	2.2	10	9.5	12.8	M8 X 1.25 - 6G	200	Silver
RL9080-02											Tin
RL9080-03											Nickel
RL9091-01	9.1	9.1	27.4	40.7	2.2	10	9.5	12.8	M8 X 1.25 - 6G	250	Silver
RL9091-02											Tin
RL9091-03											Nickel
RL9100-01	10.0	10.0	32.2	47.6	3.2	12	10	12.8	M10 X 1.5 - 6G	300	Silver
RL9100-02											Tin
RL9100-03											Nickel
RL9103-01	10.3	10.3	32.2	47.6	3.2	12	10	12.8	M10 X 1.5 - 6G	350	Silver
RL9103-02											Tin
RL9103-03											Nickel
RL9120-01	12.0	12.0	32.9	47.9	3.2	14.5	10	15.8	M12 X 1.75 - 6G	400	Silver
RL9120-02											Tin
RL9120-03											Nickel
RL9140-01	14.0	14.0	41.8	56.8	3.2	16	10	17.8	M12 X 1.75 - 6G	500	Silver
RL9140-02											Tin
RL9140-03											Nickel
RL9180-01	18.0	18.0	51.5	66.5	3.2	20	12	23.8	M16 X 2-6G	750	Silver
RL9180-02											Tin
RL9180-03											Nickel
RL9231-01	23.1	23.1	52.4	67.4	3.2	24	16	29.6	M20 X 2.5-6G	1200	Silver
RL9231-02											Tin
RL9231-03											Nickel



Amphenol Technical Products International GZ.

DWG.TITLE: RL Pin	DRAWN BY: Dick Huang	DATE: 05/29/2013	APPROVED BY:	DATE:	
TPI ITEM #: See Specification	CUST PART #:	DWG #:	SHT	OF	