

5

4

3

2

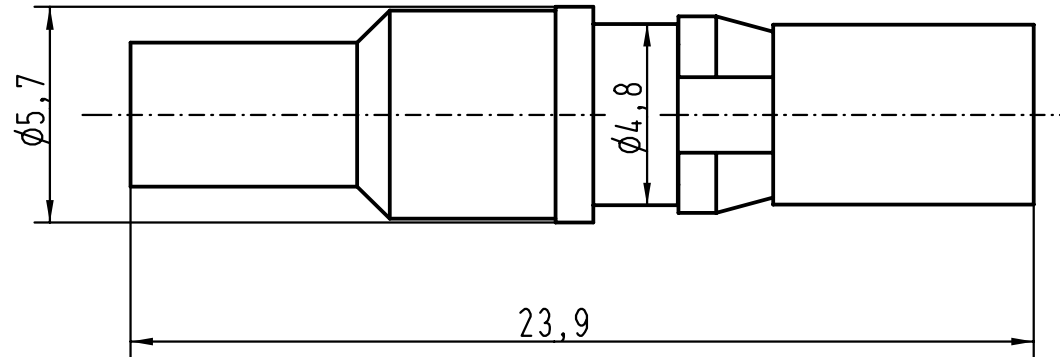
1

D

C

B

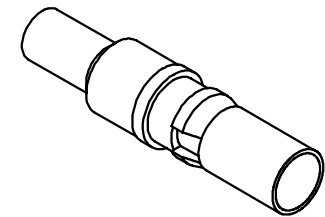
A





Eingebaut in Multikontakt-Modul 09 14 004 4512
mounted in multicontact-modul 09 14 004 4512

50 Ω Leitungen / 50 Ω wires
 RG 174/U, RG 188 A/U, RG 316/U

für geraden Leiteranschluß zum Löten und/oder Crimpen
for straight solder and/or crimp terminations



 All Dimensions in mm Original Size DIN A 4			Techn. Character.			Nicht tolerierte Masse! Free size tolerances		
				Dat.	Name	Massstab/Scale 5:1	Koaxialkontaktstift/ <i>caoxial male contact</i>	
			Detail.	24.01.00	Gö			
			Insp.		Rü			
			Stand.					
27743			HARTING KGaA				TB 09 14 000 6111	
Mod.	Dat.	Name	D-32339 ESPELKAMP				Sub. f. TB 09 03 000 6160 v. 08.03.99	
							Blatt/ page	