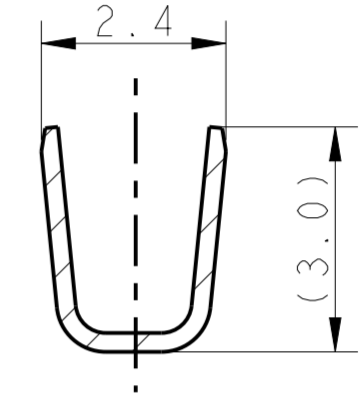
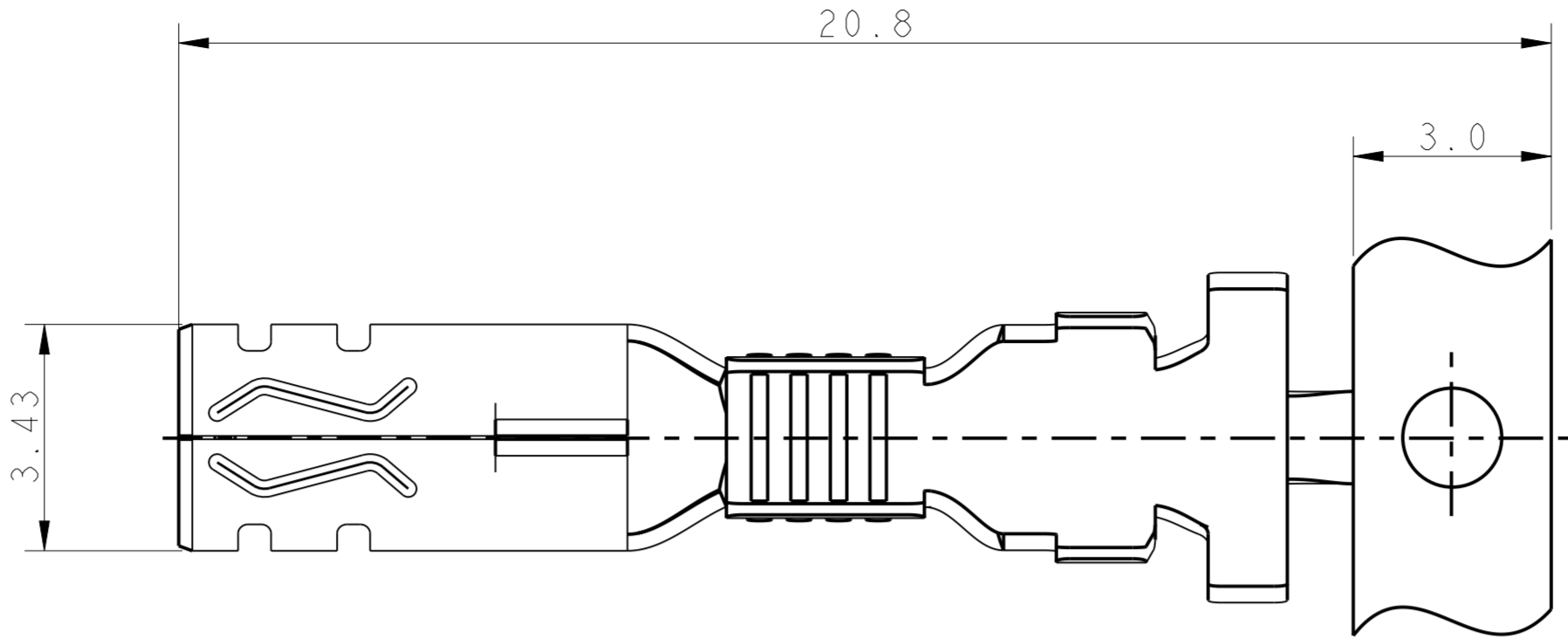
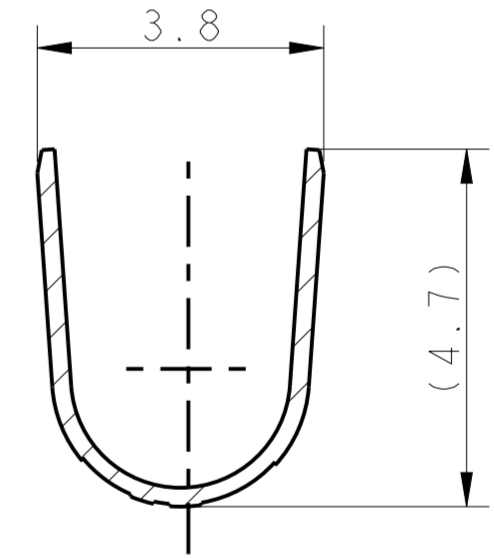
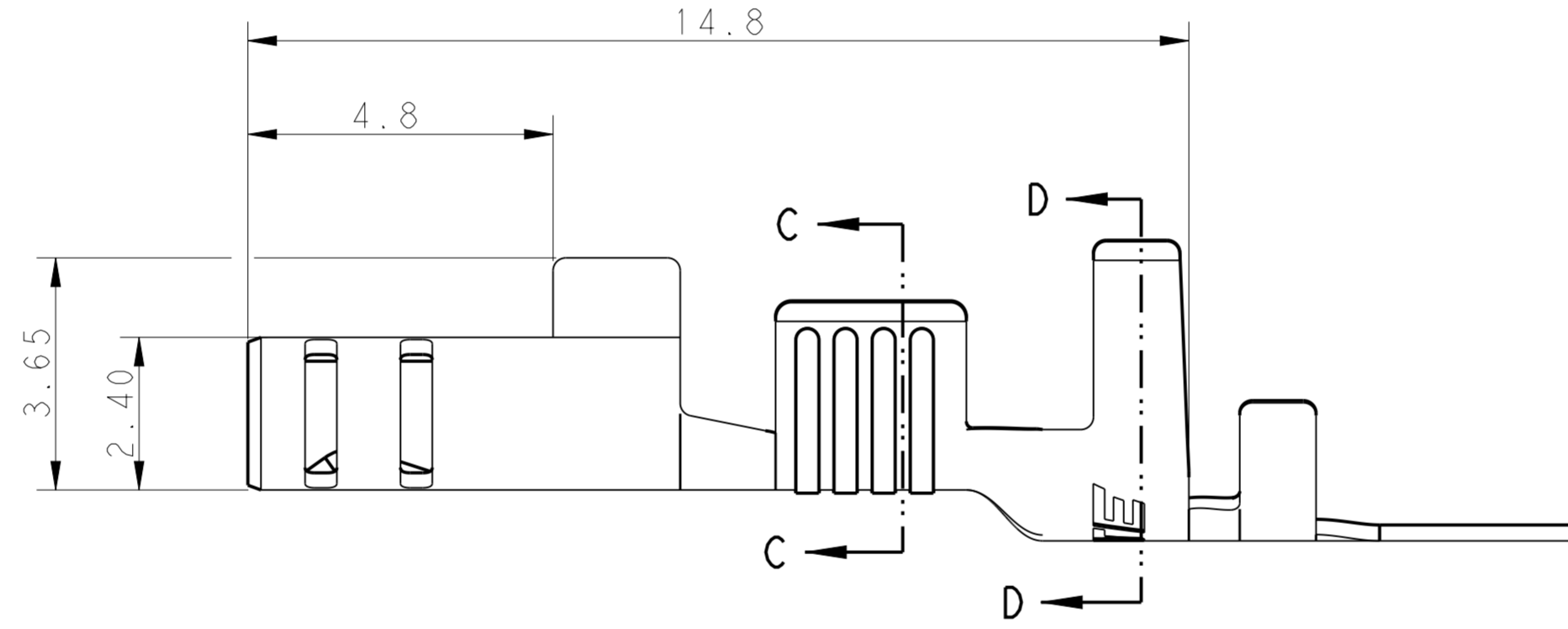


THIS DRAWING IS UNPUBLISHED. RELEASED FOR PUBLICATION 20
 © COPYRIGHT 20 BY - ALL RIGHTS RESERVED.

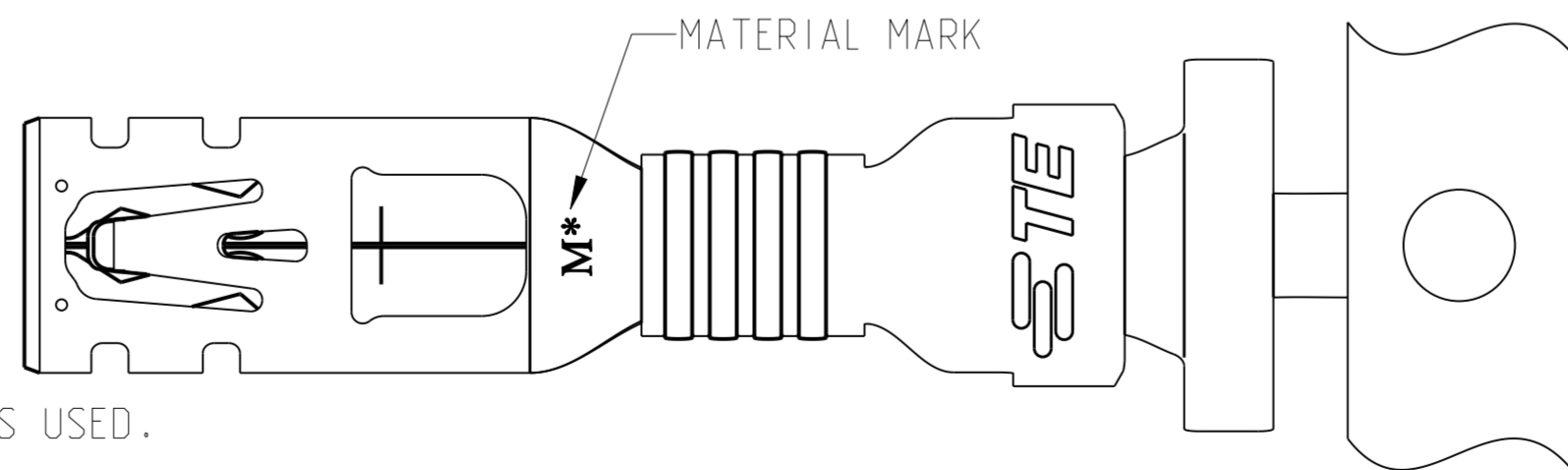
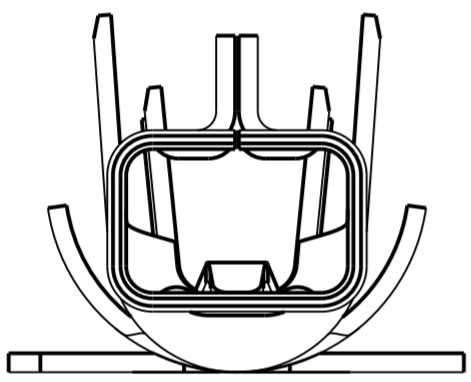
LOC	DIST	REVISIONS					
ES	00	P	LTR	DESCRIPTION	DATE	DWN	APVD
		A2		REVISED PER ECR-14-010857	14AUG2014	NK	GJ



SECTION C-C



SECTION D-D



- NOTE:
1. APPLICABLE WIRE RANGE: 16~20AWG COPPER STRANDED
 2. APPLICABLE INSULATION DIAMETER: 2.40~3.30mm.
2.00~3.30mm WHEN AN OVERLAP INSULATION APPLICATOR IS USED.
 3. APPLICABLE MATED PLUG HOUSING P/N:
-1971773-/*-1971776-*/*-1971876-*/
-2232265-/*-2232266-*/*-2232357-*

4. This product has not completed validation testing.

MATERIAL	TEMP. RATING	MATERIAL MARK	PART NO
COPPER ALLOY	HIGH(150°C)	M0	1971783-2
PHOS BRONZE	STANDARD(105°C)	M1	1971783-1

THIS DRAWING IS A CONTROLLED DOCUMENT.		DWN: TOMMY WU 11JUL2012	STE TE Connectivity	
DIMENSIONS: mm		CHK: HAPYE WU 11JUL2012		
TOLERANCES UNLESS OTHERWISE SPECIFIED:		APVD: YUJHONG MAO 11JUL2012	NAME: RECEPTACLE CONTACT POWER TRIPLE LOCK	
0 PLC	±	PRODUCT SPEC: 108-106118	SIZE: A2 CAGE CODE: 00779 DRAWING NO: 1971783	
1 PLC	±0.5	APPLICATION SPEC: 114-106118	RESTRICTED TO: -	
2 PLC	±0.30	WEIGHT: -	SCALE: - SHEET 1 OF 1 REV A2	
3 PLC	±	MATERIAL: SEE TABLE		
4 PLC	±	FINISH: PRE-TIN		
ANGLES	±	Customer Drawing		