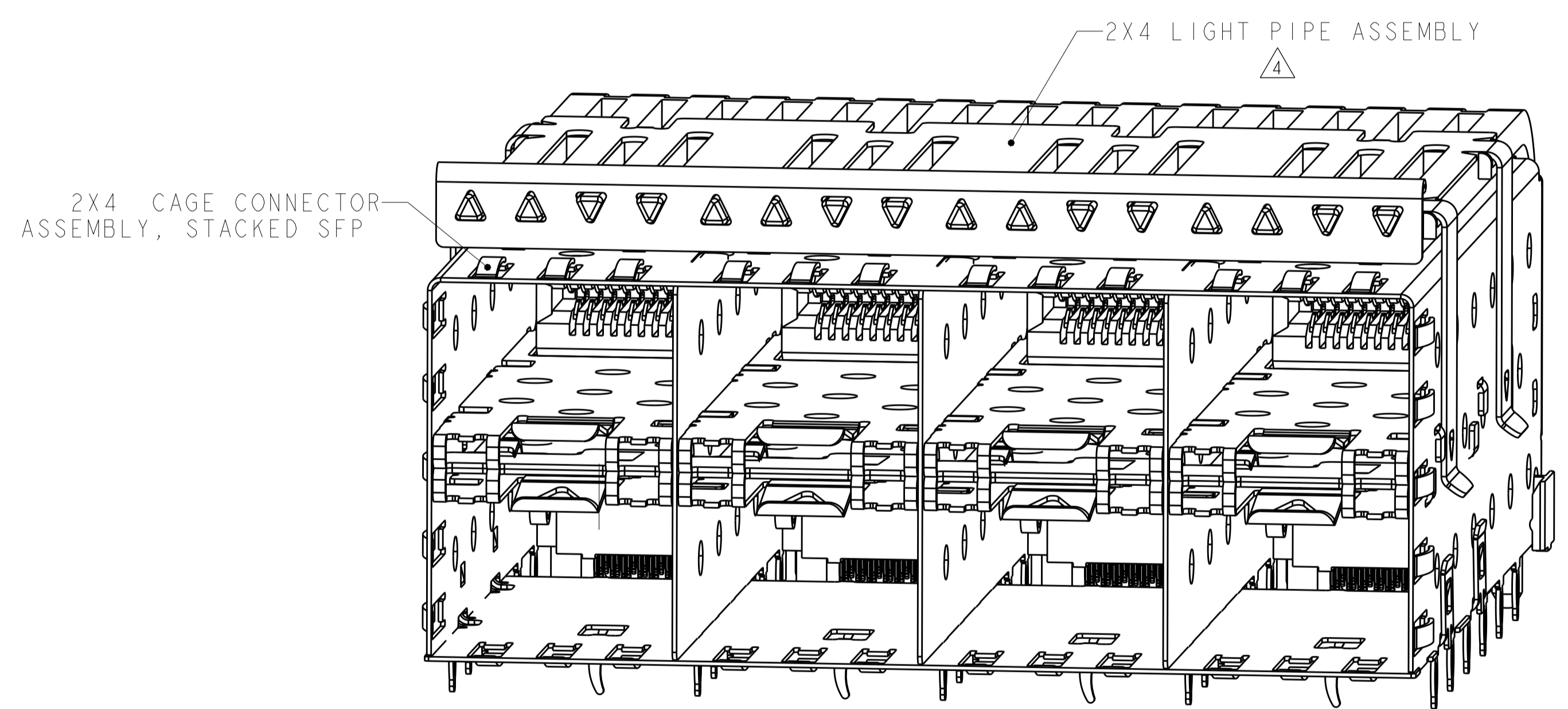
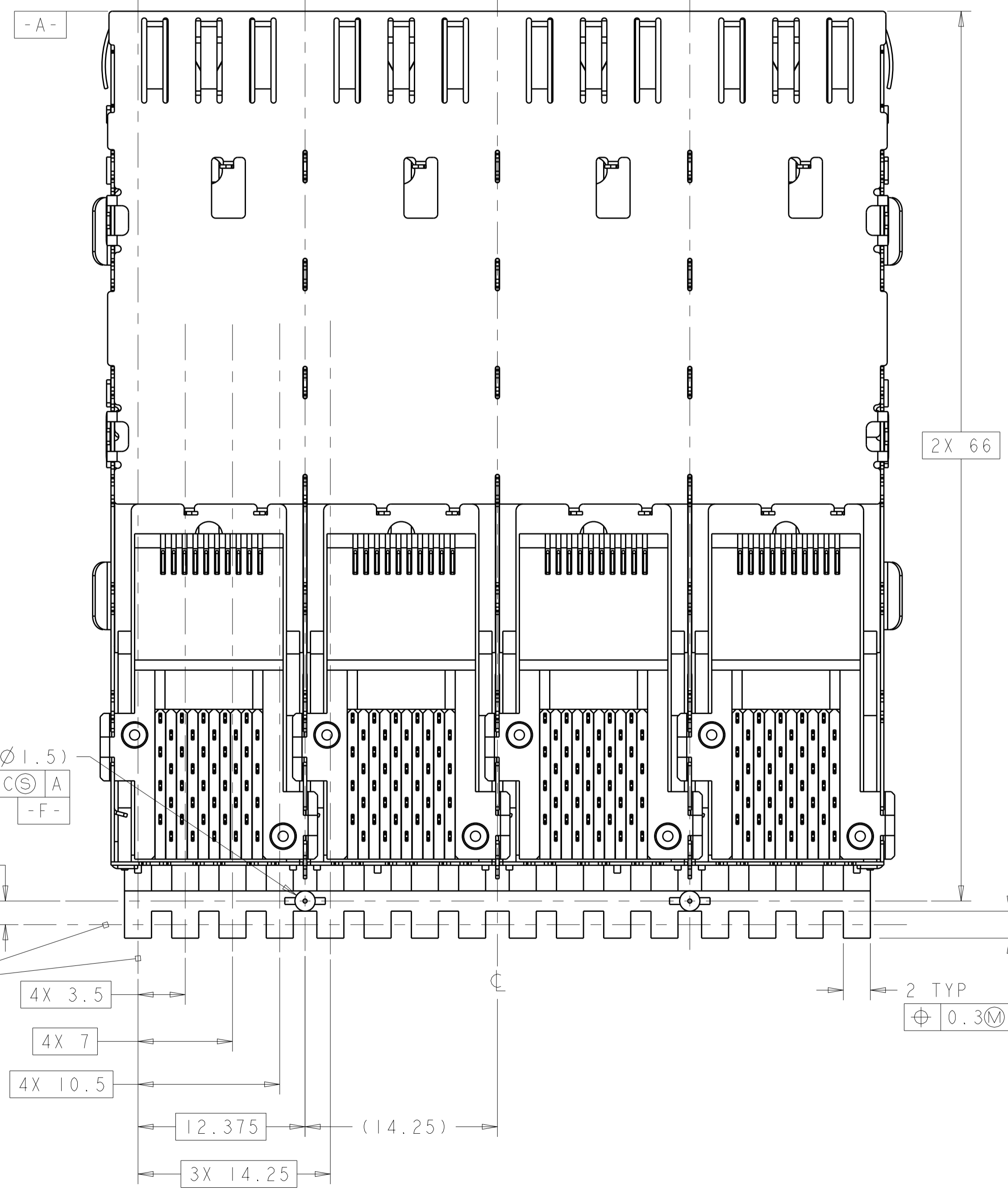
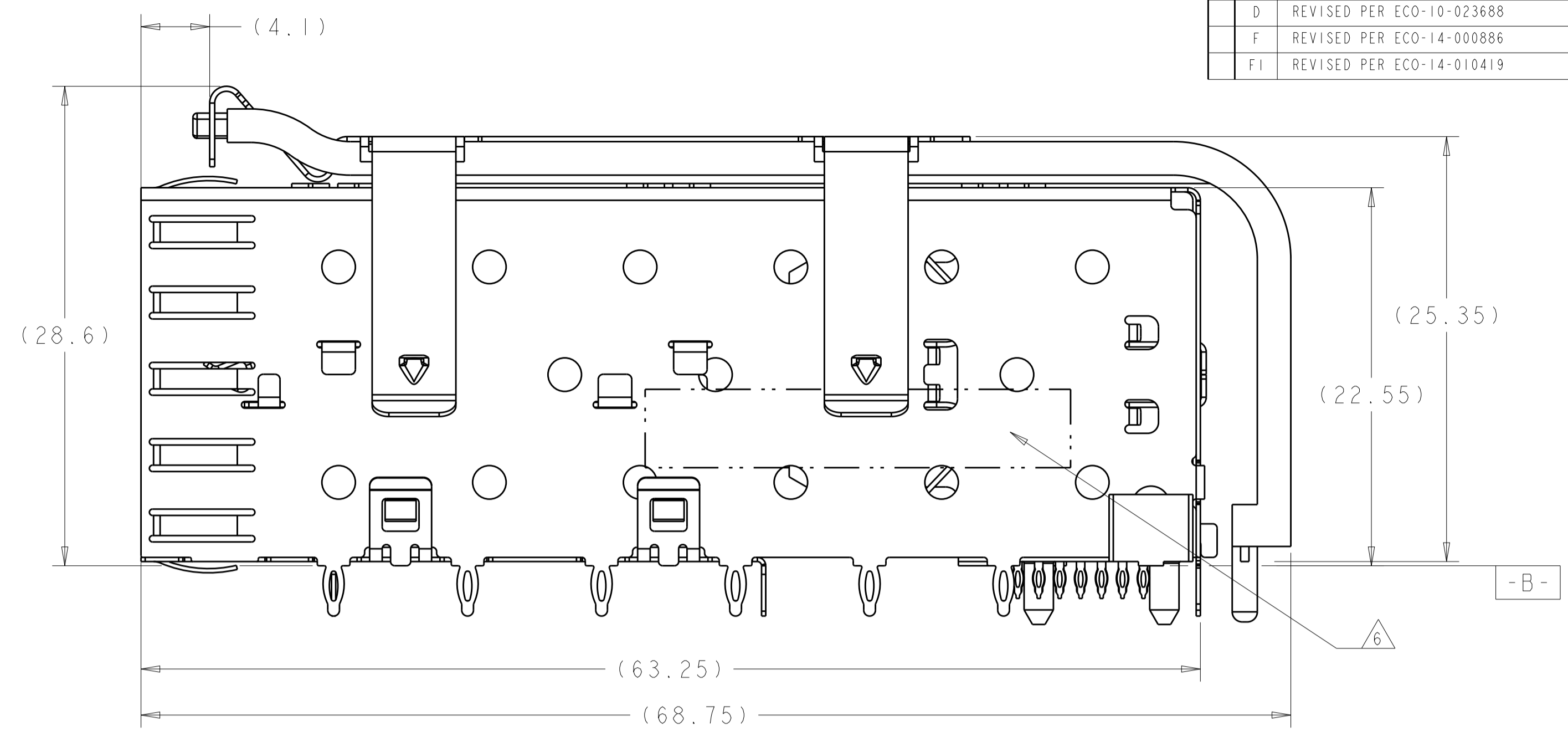
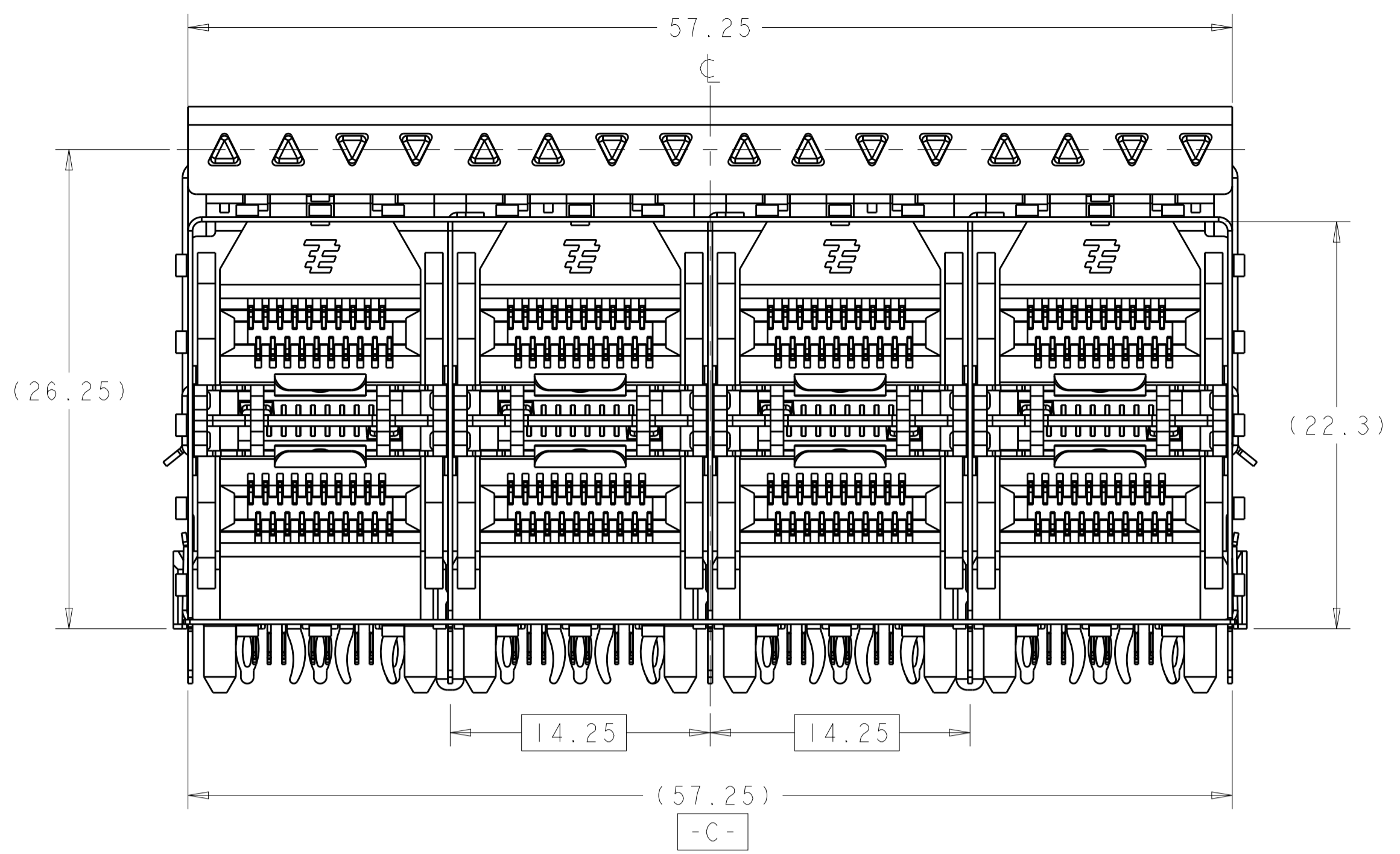


LOC		DIST		REVISIONS			
P	LTN	DESCRIPTION	DATE	DWN	APVD		
C		ECR-08-028454	11NOV2008	AL	SY		
D		REVISED PER ECO-10-023688	25NOV2010	JY	CW		
F		REVISED PER ECO-14-000886	20FEB2014	JW	SH		
F1		REVISED PER ECO-14-010419	11JUL2014	JW	SH		



- ⚠ DATUM AND BASIC DIMENSION TO BE DETERMINED BY CUSTOMER
- ⚠ DATUM C APPLIES OVER ENTIRE DIMENSION
- ⚠ INTERPRETATION OF DATUM REFERENCE FRAME IN ACCORDANCE WITH SECT 4.4.1.1 OF ASME Y14.5M-1994
- ⚠ LIGHT PIPE KIT SUPPLIED SEPERATELY, KIT TO BE ATTACHED AFTER SEATING OF CAGE CONNECTOR ASSEMBLY ON BOARD.
- 5. CONNECTOR ASSEMBLY CONSIST OF LIGHT PIPE ASSEMBLY AND CAGE/CONNECTOR ASSEMBLY, SUPPLIED UNASSEMBLED.
- ⚠ DATE CODE AND PART NUMBER IN APPROXIMATE AREA SHOWN LABEL ON CAGE ASSEMBLY WILL HAVE PART NUMBER 1658629-1/2170264-1.

⊕	∅0.5M	B	C	⊙	A
-F-					

2 TYP	⊕	0.3M	B	F	⊙	C	⊙
-------	---	------	---	---	---	---	---

2 TYP	⊕	0.3M	B	F	⊙	C	⊙
-------	---	------	---	---	---	---	---

1761005-1	2170286-1	1658758-3
1761005-1	1658629-1	1658758-1
LIGHT PIPE ASSEMBLY	CAGE CONNECTOR ASSEMBLY	PART NUMBER

THIS DRAWING IS A CONTROLLED DOCUMENT.

DIMENSIONS: mm

TOLERANCES UNLESS OTHERWISE SPECIFIED:

0 PLC	±0.25
1 PLC	±0.25
2 PLC	±0.1
3 PLC	±0.1
4 PLC	±0.1
ANGLES	±0.1

MATERIAL: - FINISH: -

OWN: M.E. CONNER 8JUN2003  
 CHK: R.R. HENRY 18JUN2003  
 APVD: R.R. HENRY 18JUN2003

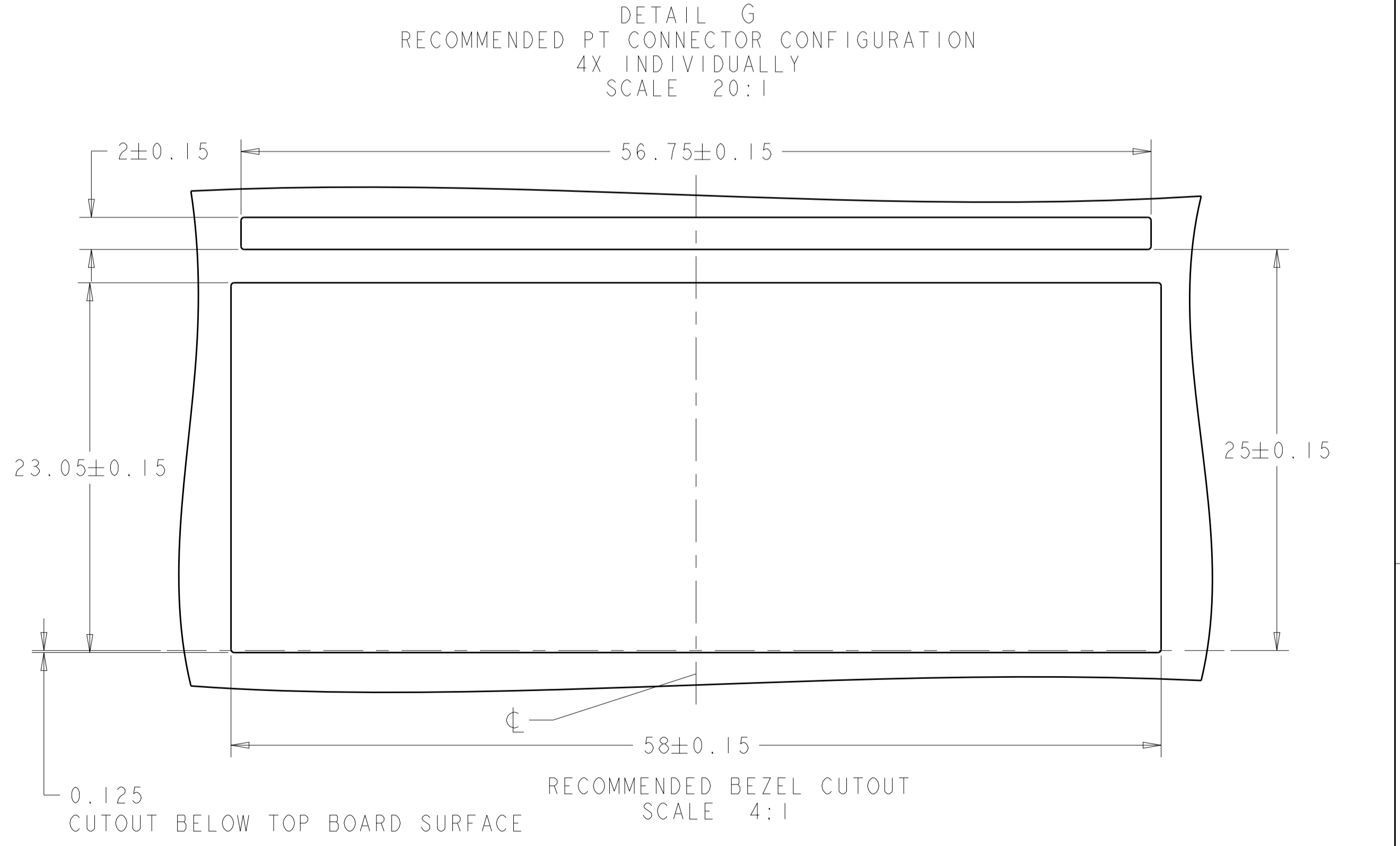
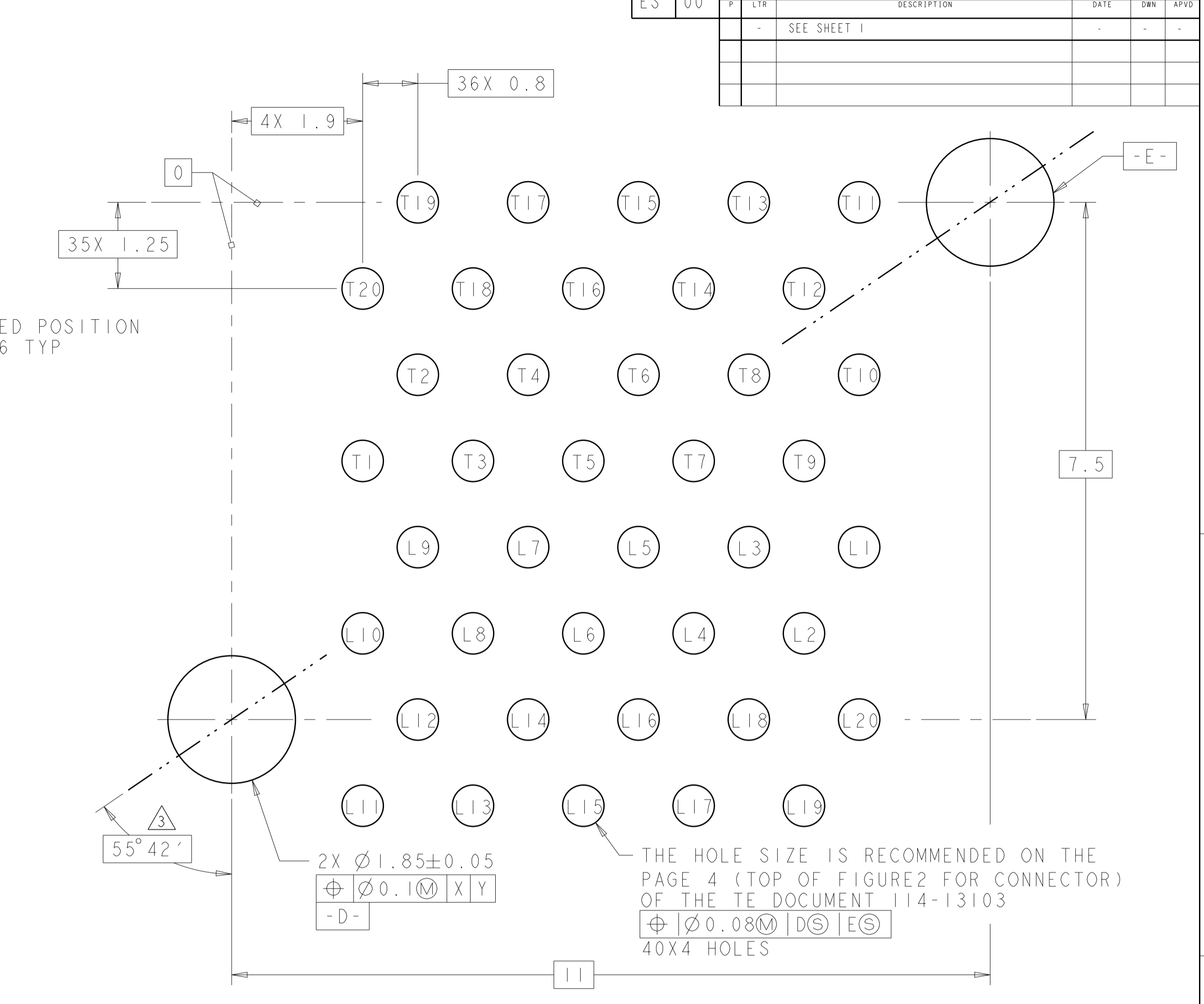
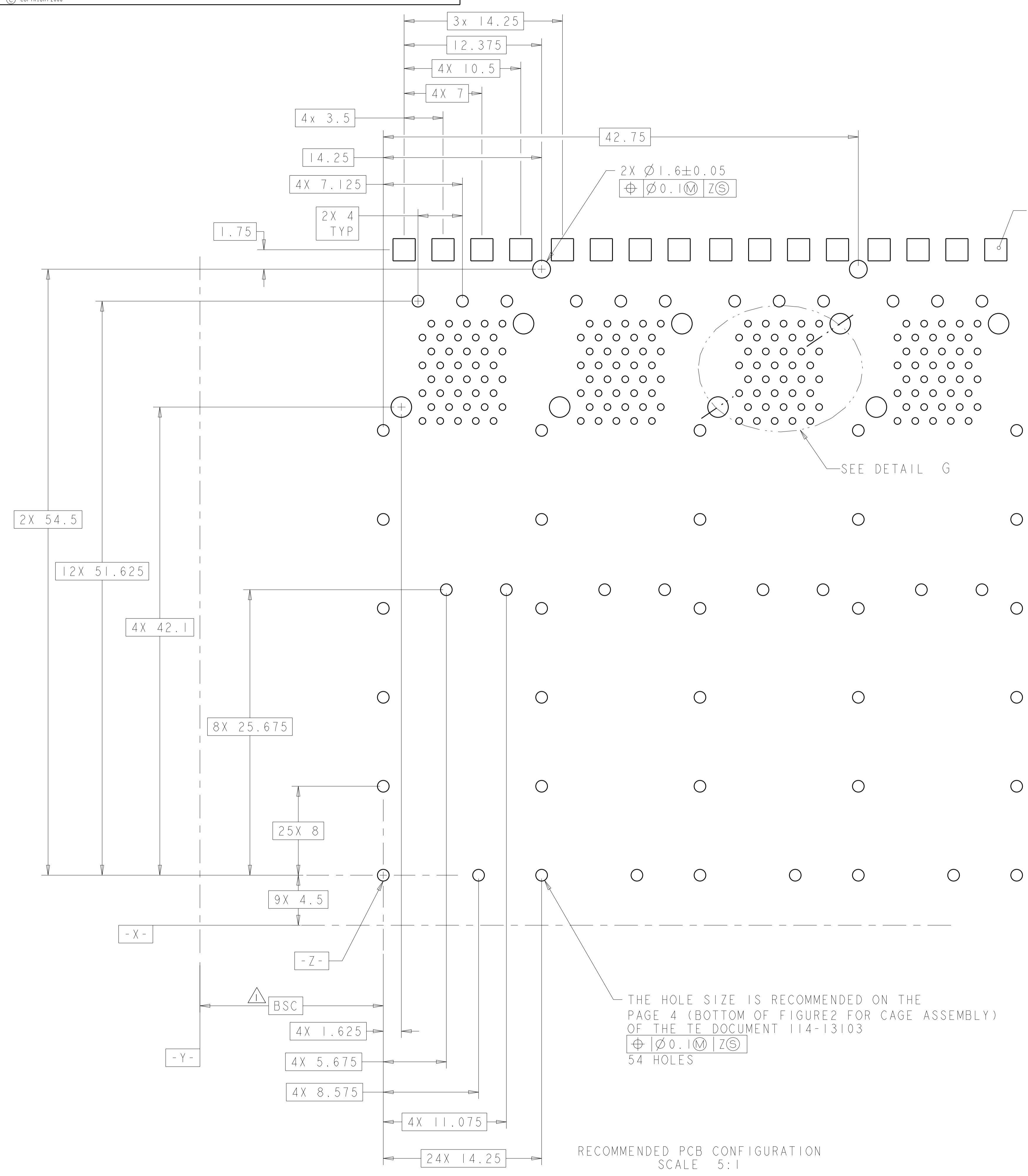
NAME: 2X4 CONNECTOR ASSEMBLY, STACKED SFP, WITH 2X4 SFP CAGE AND LIGHT PIPE KIT

SIZE: A1 CAGE CODE: 1658758 DRAWING NO: 114-13103

RESTRICTED TO: -

CUSTOMER DRAWING SCALE: 4:1 SHEET: 1 OF 2 REV: F1

LOC		DIST		REVISIONS			
ES	00	P	LTN	DESCRIPTION	DATE	DMN	APVD
		-		SEE SHEET 1			



THE HOLE SIZE IS RECOMMENDED ON THE PAGE 4 (BOTTOM OF FIGURE 2 FOR CAGE ASSEMBLY) OF THE TE DOCUMENT 114-13103  
 $\oplus \varnothing 0.1 \text{ M} \text{ Z S}$   
 54 HOLES

THIS DRAWING IS A CONTROLLED DOCUMENT.		DMN: M.E. CONNER 18JUN2003	TE Connectivity
DIMENSIONS: mm		CHK: R.R. HENRY 18JUN2003	
TOLERANCES UNLESS OTHERWISE SPECIFIED:		APVD: R.R. HENRY 18JUN2003	NAME: 2x4 CONNECTOR ASSEMBLY, STACKED SFP WITH 2x4 SFP CAGE AND LIGHT PIPE KIT PRODUCT SPEC: 108-2161 APPLICATION SPEC:
0 PLC ±0.25 1 PLC ±0.25 2 PLC ±0.1 3 PLC ± 4 PLC ± ANGLES ± FINISH ±		WEIGHT: SCALE: 1:1	
MATERIAL:		SIZE: A1	CAGE CODE: 1658758 SHEET: 2 OF 2 REV: F1