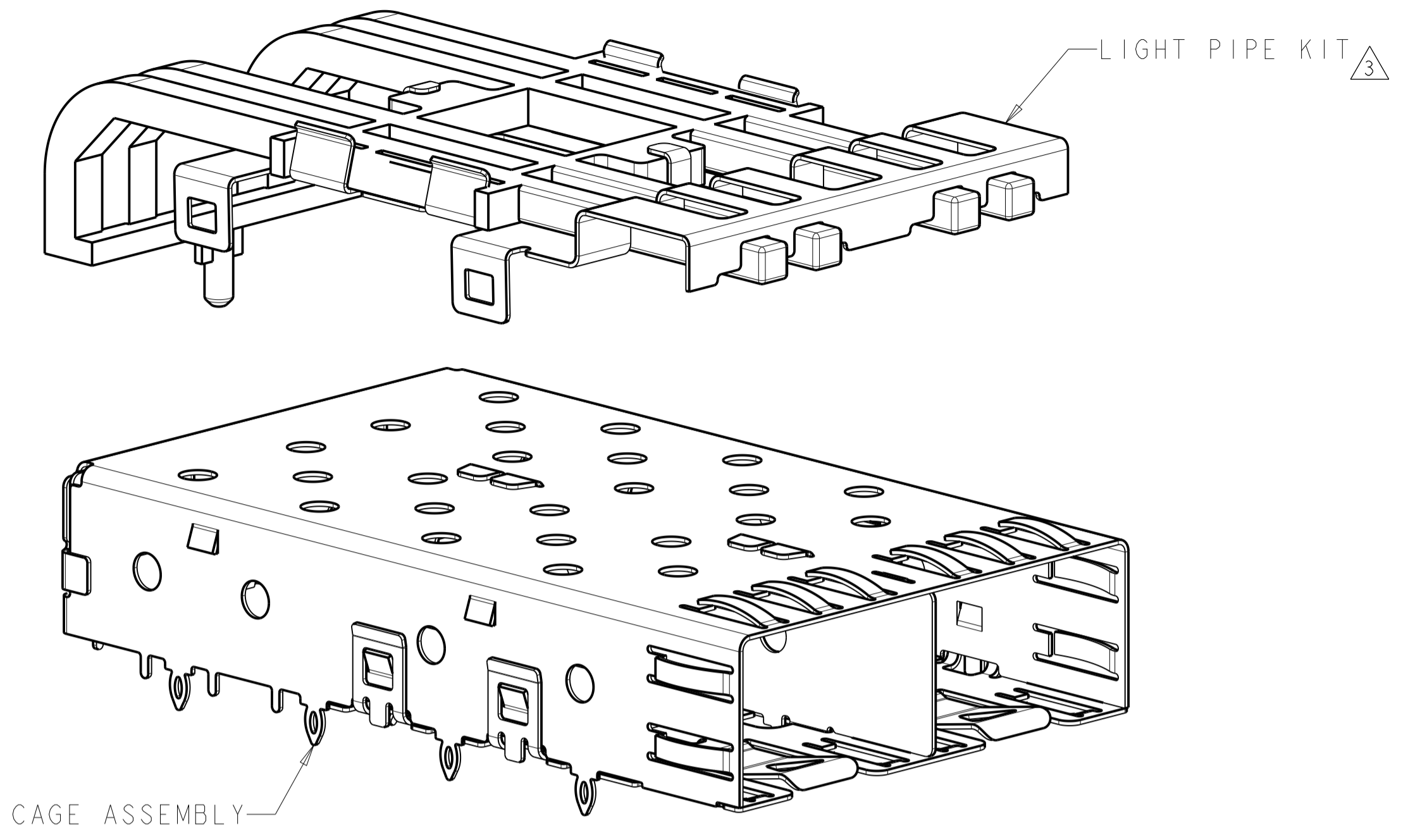
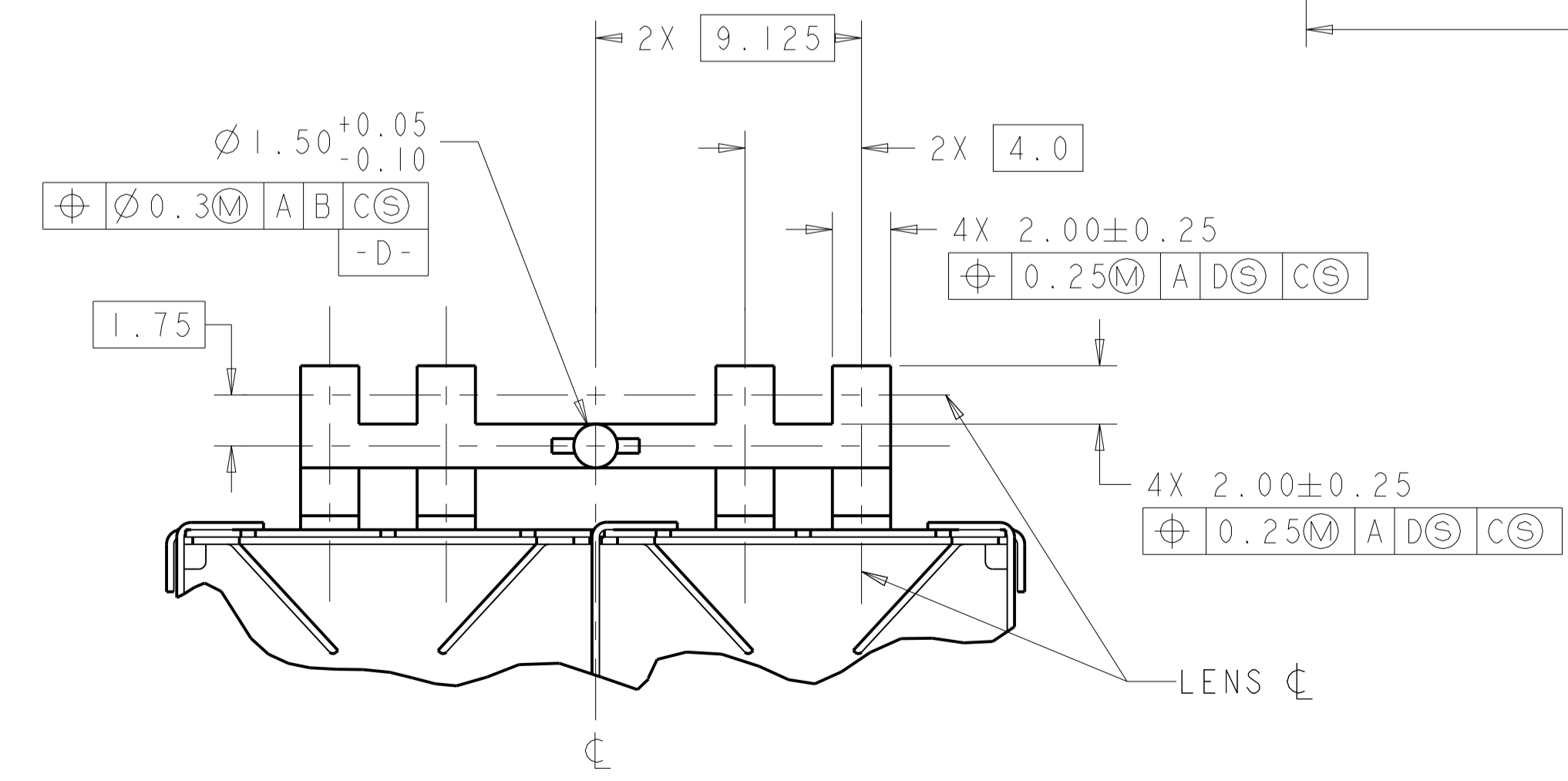
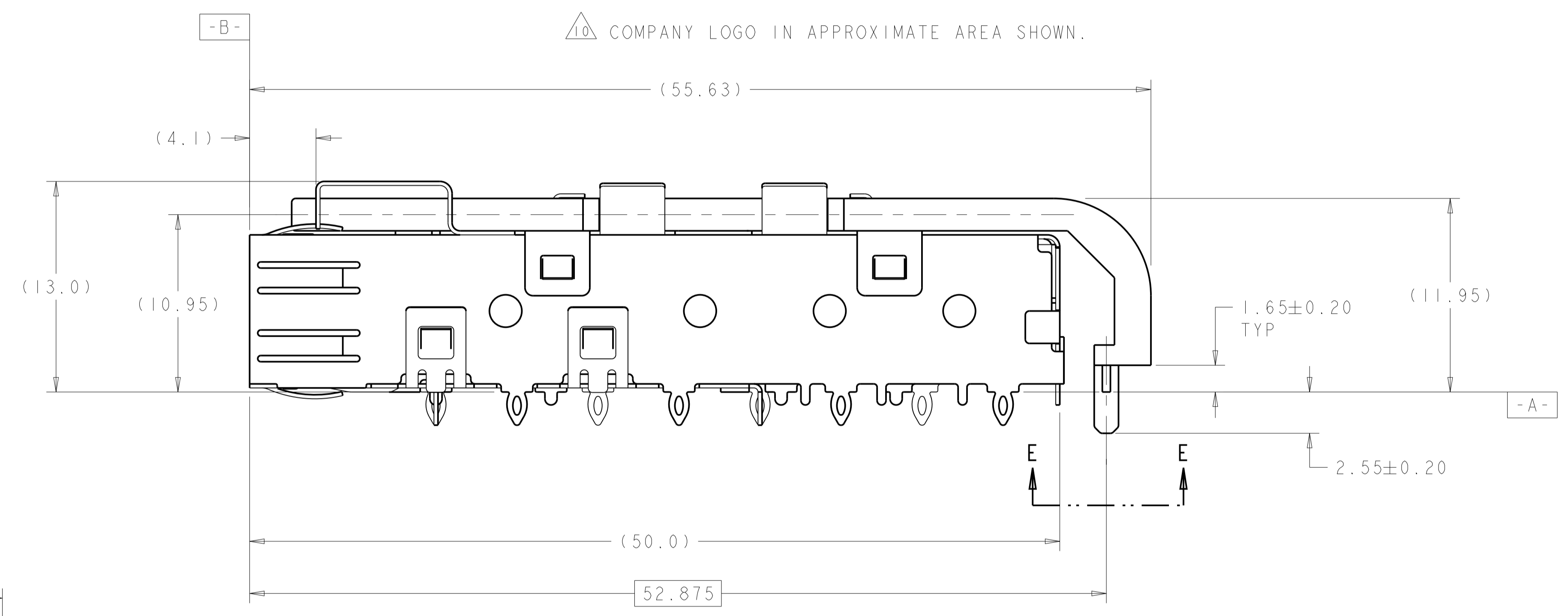
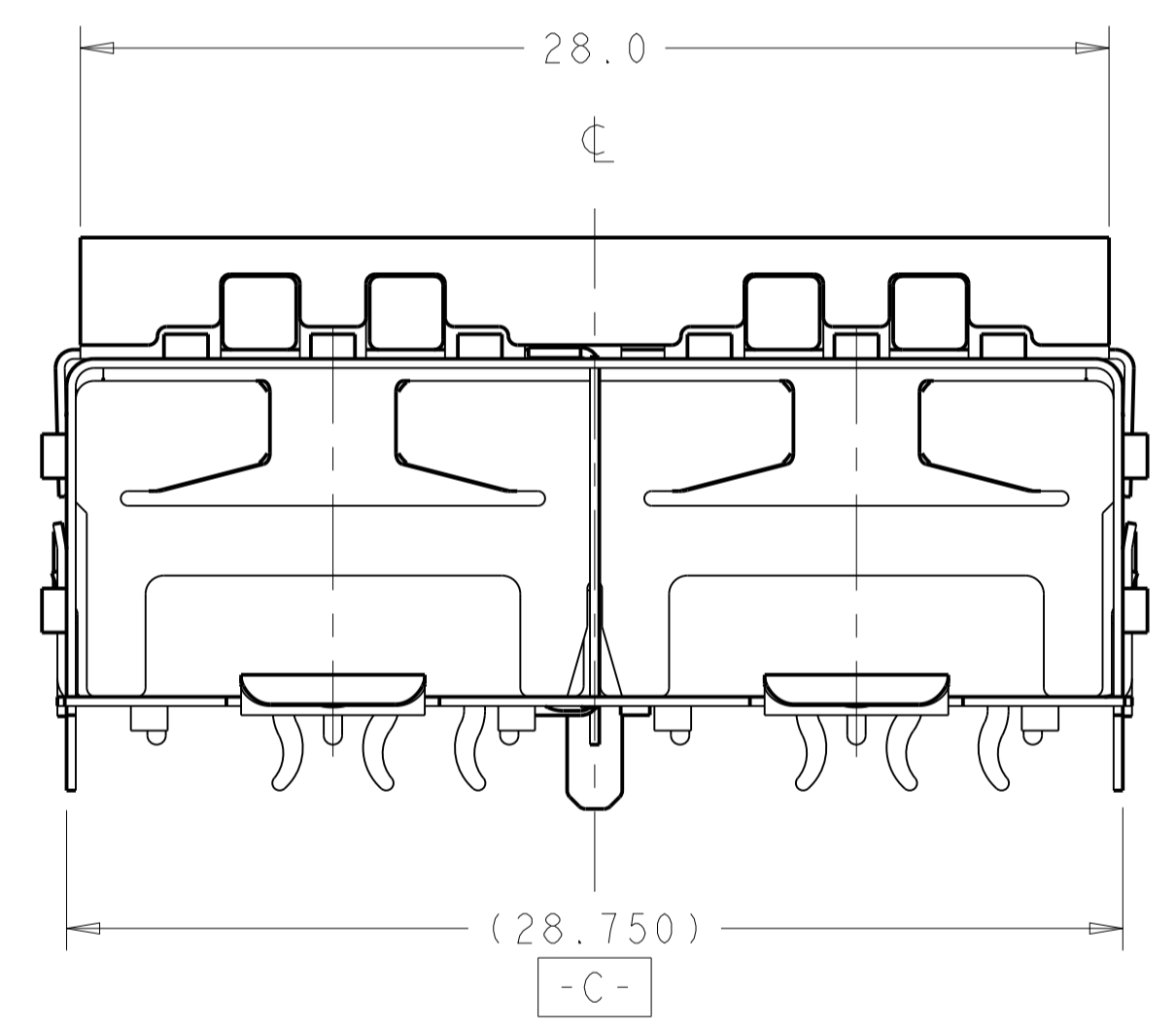


LOC	DIST	REVISIONS			
GP	00	REV	DATE	BY	CHK
E1		REVISED PER ECO-11-004835	18APR2011	RK	HMR
F		REVISED PER ECO-14-000886	20FEB2014	JW	SH
F1		REVISED PER ECO-14-010419	11JUL2014	JW	SH

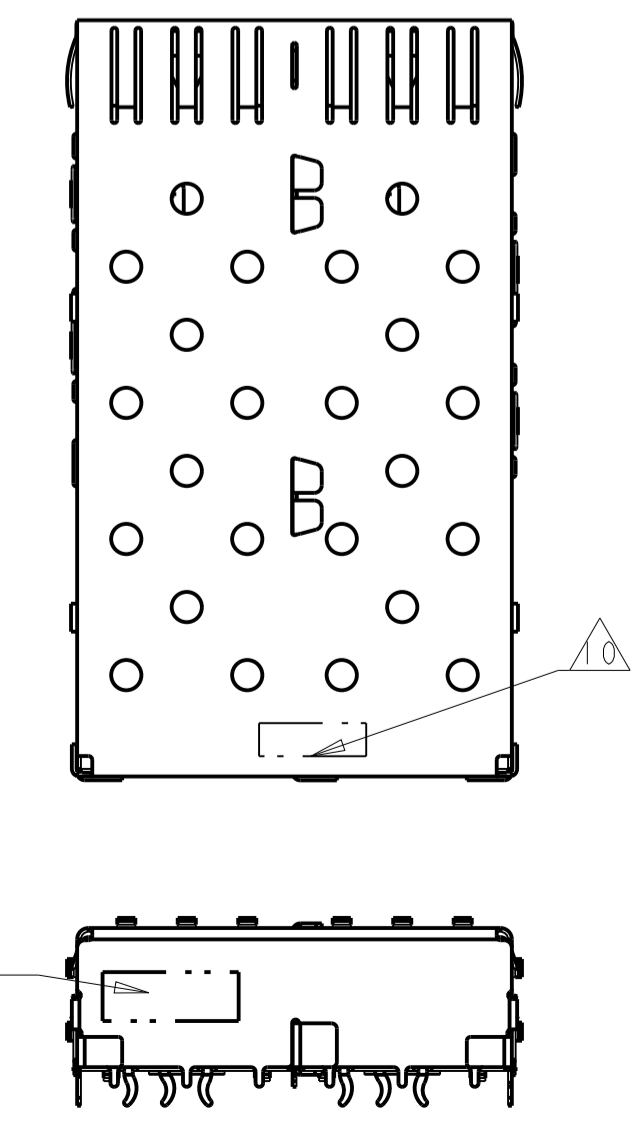


- △ PADS AND VIAS CHASSIS GROUND.
- △ DATUM AND BASIC DIMENSIONS ESTABLISHED BY CUSTOMER.
- △ LIGHT PIPE KIT WHICH IS SEPARATE FROM CAGE ASSEMBLY. KIT TO BE ATTACHED AFTER SEATING OF 1761014-1 ON PC BOARD.
- △ DATE CODE AND PART NUMBER IN APPROXIMATE AREA SHOWN LABEL ON CAGE ASSEMBLY WILL HAVE PART NUMBER 1761014-1 OR -3.
- 5. REFERENCE STYLE 1 ON APPLICATION SPECIFICATION 114-13165 FOR ADDITIONAL INFORMATION ON CAGE ASSEMBLIES WITH LIGHT PIPES.
- △ REFERENCE APPLICATION SPEC 114-13120, HOLE A, FOR RECOMMENDED DRILL HOLE DIAMETER AND PLATING THICKNESSES.
- △ REFERENCE APPLICATION SPEC 114-13120, HOLE B, FOR RECOMMENDED DRILL HOLE DIAMETER AND PLATING THICKNESSES.
- △ PATTERN REPEATS FOR EACH PORT. SPACING BETWEEN PORTS IS 14.25mm.
- △ MINIMUM PC BOARD THICKNESS = 1.50mm.
- △ COMPANY LOGO IN APPROXIMATE AREA SHOWN.

1761007-1&-2
SCALE 4:1



VIEW E-E
ROTATED 90° COUNTERCLOCKWISE



1761011-3	1761014-3	1X2 ASSEMBLY	1761007-2
1761011-1	1761014-1	1X2 ASSEMBLY	1761007-1
LIGHT PIPE KIT	CAGE ASSEMBLY	DESCRIPTION	PART NO

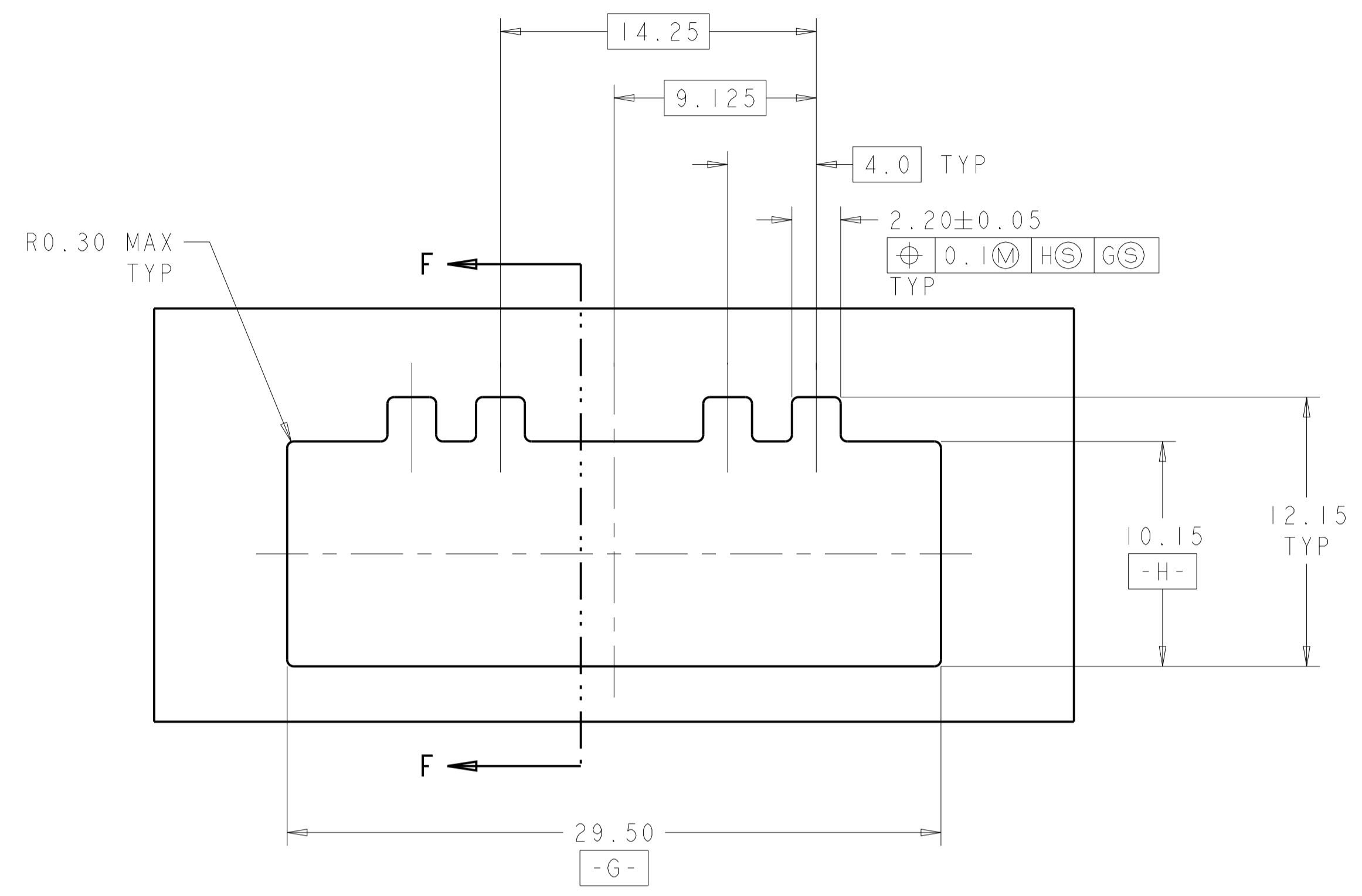
THIS DRAWING IS A CONTROLLED DOCUMENT. DWN: JIM VAN SCOOC 16 JAN 2004
CHK: M. PHILLIPS 16 JAN 2004
APVD: M. PHILLIPS 16 JAN 2004

STE TE Connectivity

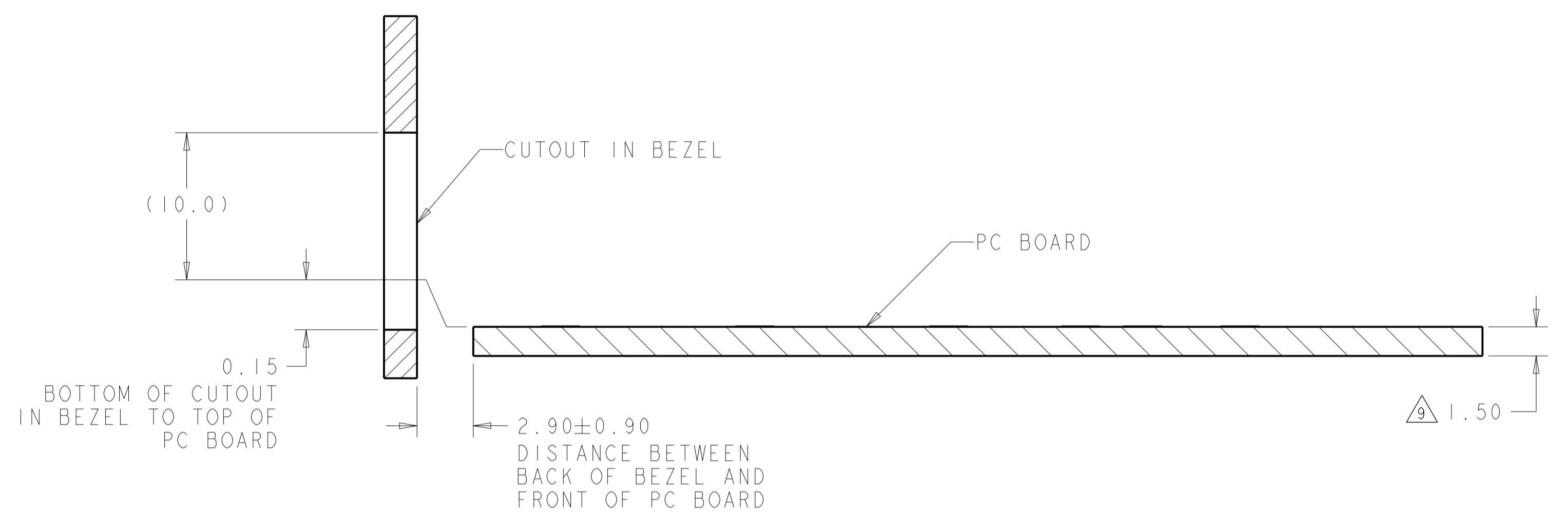
NAME: SFP
PRODUCT SPEC: 108-1950
APPLICATION SPEC: 114-13120
CAGE CODE: 1761007
DRAWING NO: 1761007

SCALE: 5:1 SHEET: 1 OF 3 REV: F1

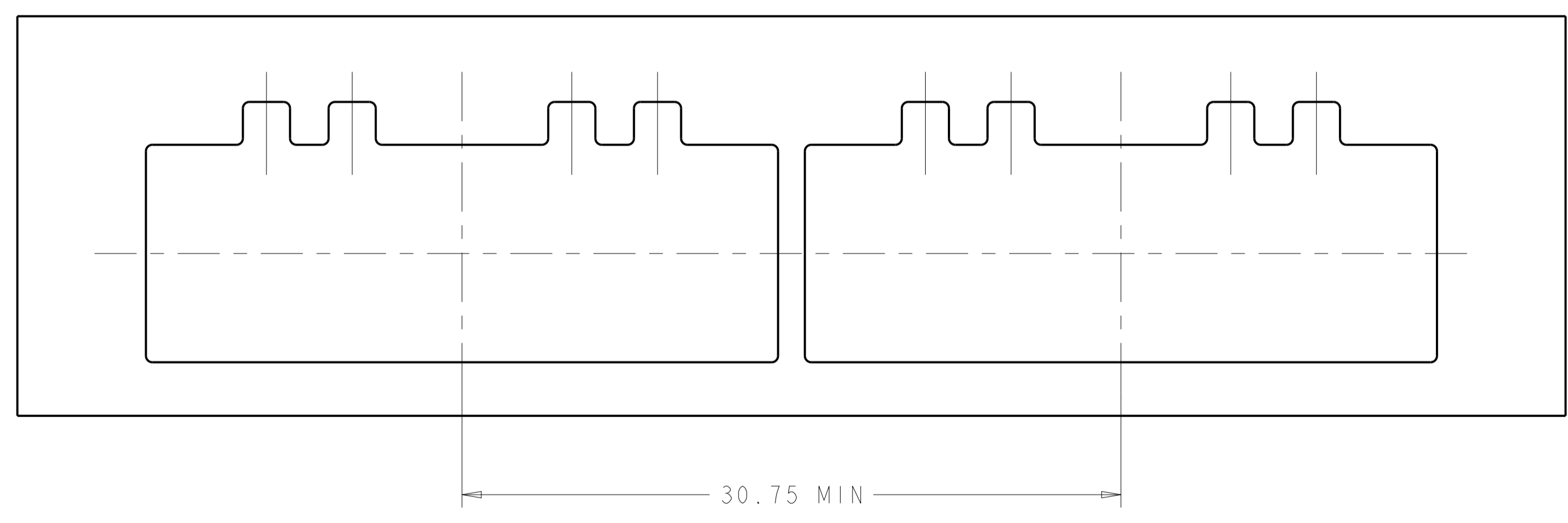
LOC	DIST	REVISIONS			
		REV	DATE	BY	APPV
GP	00	-	SEE SHEET 1	-	-



RECOMMENDED BEZEL CUTOUT



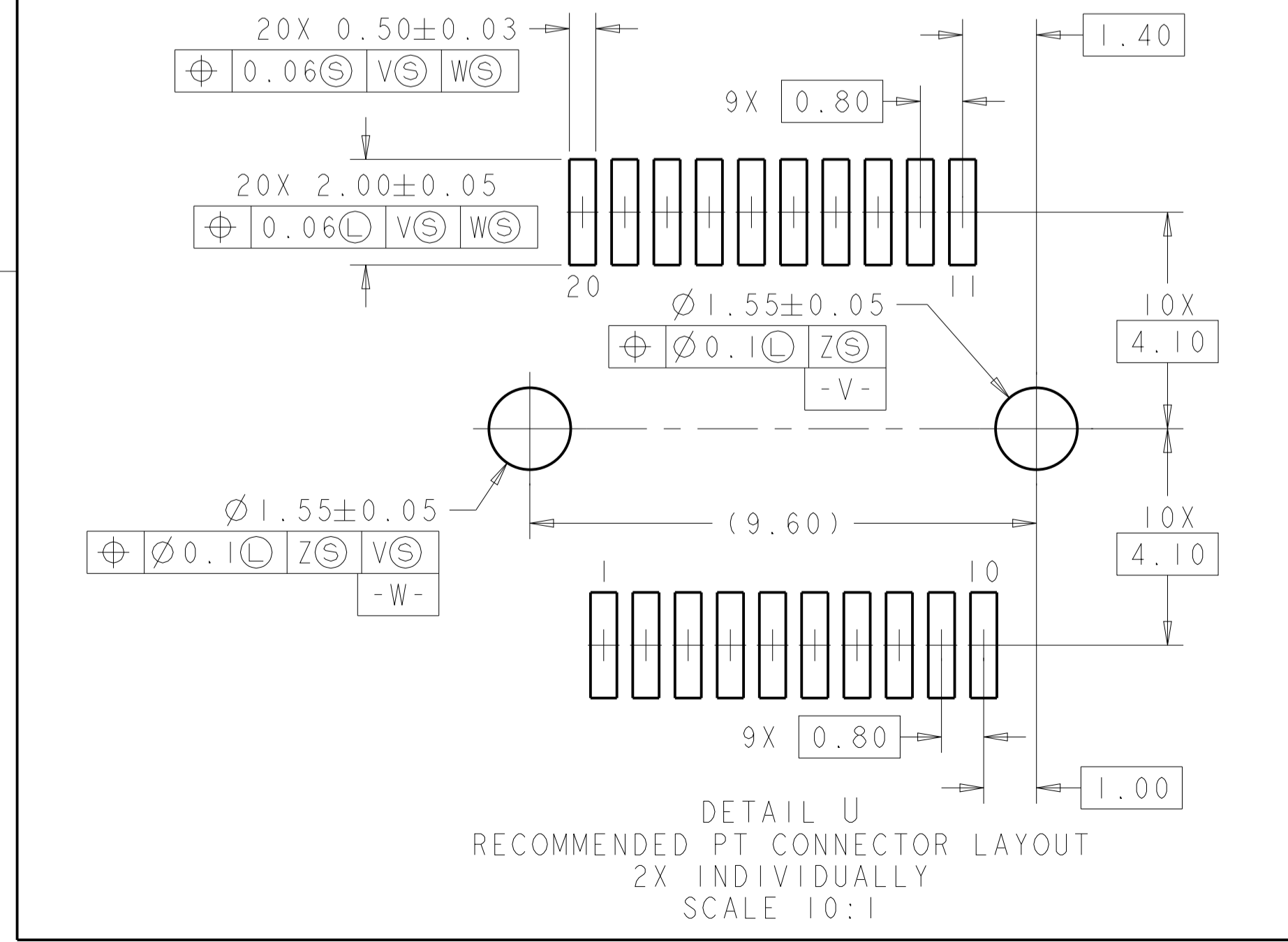
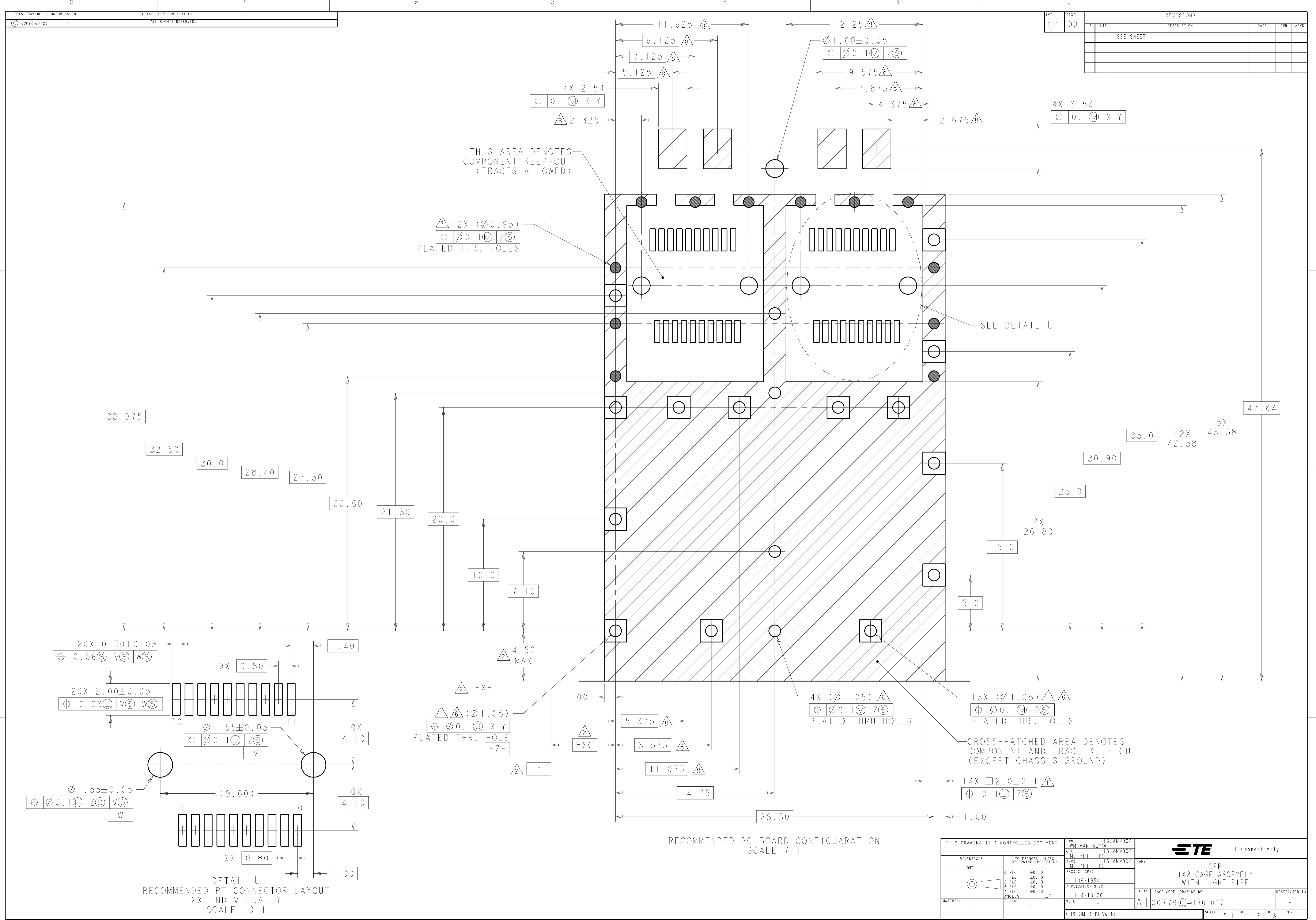
SECTION F-F
RECOMMENDED BEZEL CONFIGURATION



THIS DRAWING IS A CONTROLLED DOCUMENT.		DWN: MM VAN SCOOC 16 JAN 2004 CHK: M. PHILLIPS 16 JAN 2004 APVD: M. PHILLIPS 16 JAN 2004	TE Connectivity
DIMENSIONS: mm 	TOLERANCES UNLESS OTHERWISE SPECIFIED: 0 PLC ±0.10 1 PLC ±0.10 2 PLC ±0.10 3 PLC ±0.10 4 PLC ±0.10 ANGLES ±0.10°	NAME: SFP PRODUCT SPEC: 108-1950 APPLICATION SPEC: 114-13120 WEIGHT: - CUSTOMER DRAWING	
MATERIAL: -	FINISH: -	SIZE: A100779 CAGE CODE: - DRAWING NO: 1761007	RESTRICTED TO: - SCALE: 5:1 SHEET: 2 OF 3 REV: F1

LOC	DIST	REV	DATE	BY	APPV
GP	00				

REVISIONS			
REV	DATE	BY	APPV
1			



THIS DRAWING IS A CONTROLLED DOCUMENT.		DWN: JIM VAN SCOOC 16 JAN 2004		TE Connectivity	
DIMENSIONS: mm		CHK: M. PHILLIPS 16 JAN 2004			
TOLERANCES UNLESS OTHERWISE SPECIFIED:		APV: M. PHILLIPS 16 JAN 2004		NAME: SFP 1X2 CAGE ASSEMBLY WITH LIGHT PIPE	
0 PLC ±0.10		PRODUCT SPEC: 108-1950		SIZE: CAGE CODE DRAWING NO: A100779C=1761007	
1 PLC ±0.10		APPLICATION SPEC: 114-13120		RESTRICTED TO: -	
2 PLC ±0.10		WEIGHT: -		SCALE: 5:1 SHEET 3 OF 3 REV: I	
3 PLC ±0.10		CUSTOMER DRAWING			
4 PLC ±0.10					
ANGLES: ±0.10					
FINISH: -					