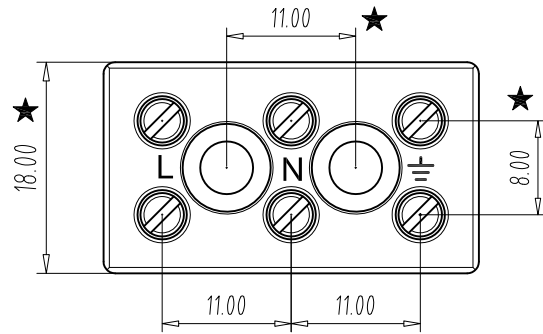
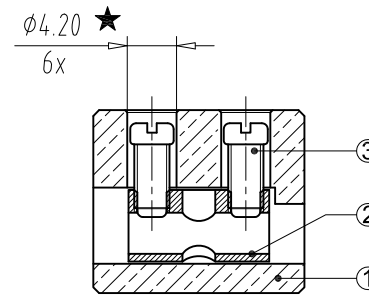
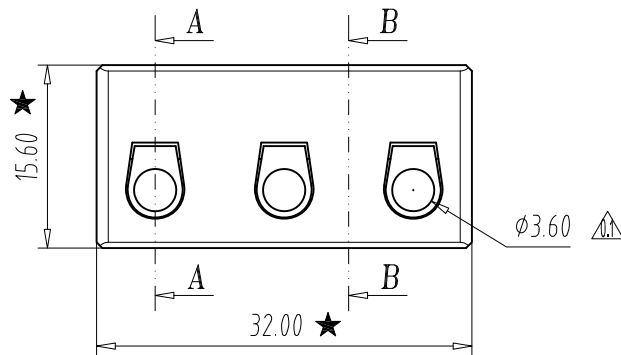


REV	E.C.N NO.	CONTENT	CHK	DATE
V0.0		ORIGINAL	WG	13.10.26
V0.1		TOLERANCE ACCORDING TO DIN 40680	WG	14.03.18

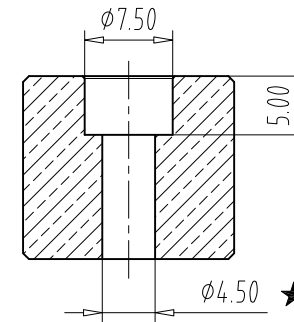


技术参数/technical data :

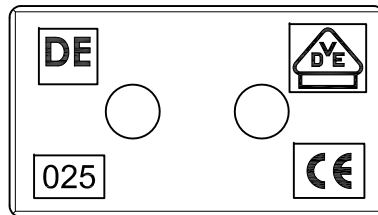
额定电压/Rated voltage: 450V (IEC) , 300V (UL)  
 额定电流/Rated current: 32A (IEC) , 20A (UL)  
 接线容量/Wire range: 1.5mm<sup>2</sup>-4mm<sup>2</sup> MAX 6mm<sup>2</sup>Sol, 22-12AWG  
 剥线长度/Strip length: 5.0-6.0mm  
 螺纹及扭力/Screw&torque: M3 screw ; Torque 0.5Nm /4.5lbf-in  
 工作温度/Operating temp. : -40°C ~ +200°C  
 RoHS compliance



Section A--A



Section B--B



3	Screw	TLS00054	6	Steel	Zn plated
2	Block	TL010B0019	3	Brass	Ni plated
1	Housing	TLB34A0003	1	Porcelain	
ITEM	NAME OF PART	NO. OF PART	Q'TY	MATERIAL	NOTE
DWG.	WG	DATE	13.10.26	UNITS	MM
CHK.		DATE		SCALE	1:1
APP.		DATE			
			NAME		
			DWGNO.	DESTB-0253	

Nominal dimension range in mm																		⚠	⊥	≡	-	//				
over 0	over 4	over 6	over 8	over 10	over 13	over 16	over 20	over 25	over 30	over 40	over 50	over 60	over 80	over 100	over 120	over 150	over 200	over 0	over 100	over 150	0	over 10	all	0	100	over 150
to 4	to 6	to 8	to 10	to 13	to 16	to 20	to 25	to 30	to 40	to 50	to 60	to 80	to 100	to 120	to 150	to 200	to 500	to 10	to 100	to 150	0.3	0.5	0.4	0.4	0.6	0.9
±0.15	±0.20	±0.25	±0.3	±0.35	±0.40	±0.45	±0.50	±0.55	±0.60	±0.70	±0.90	±1.20	±1.60	±2.00	±2.50	±3.00	±4.20									