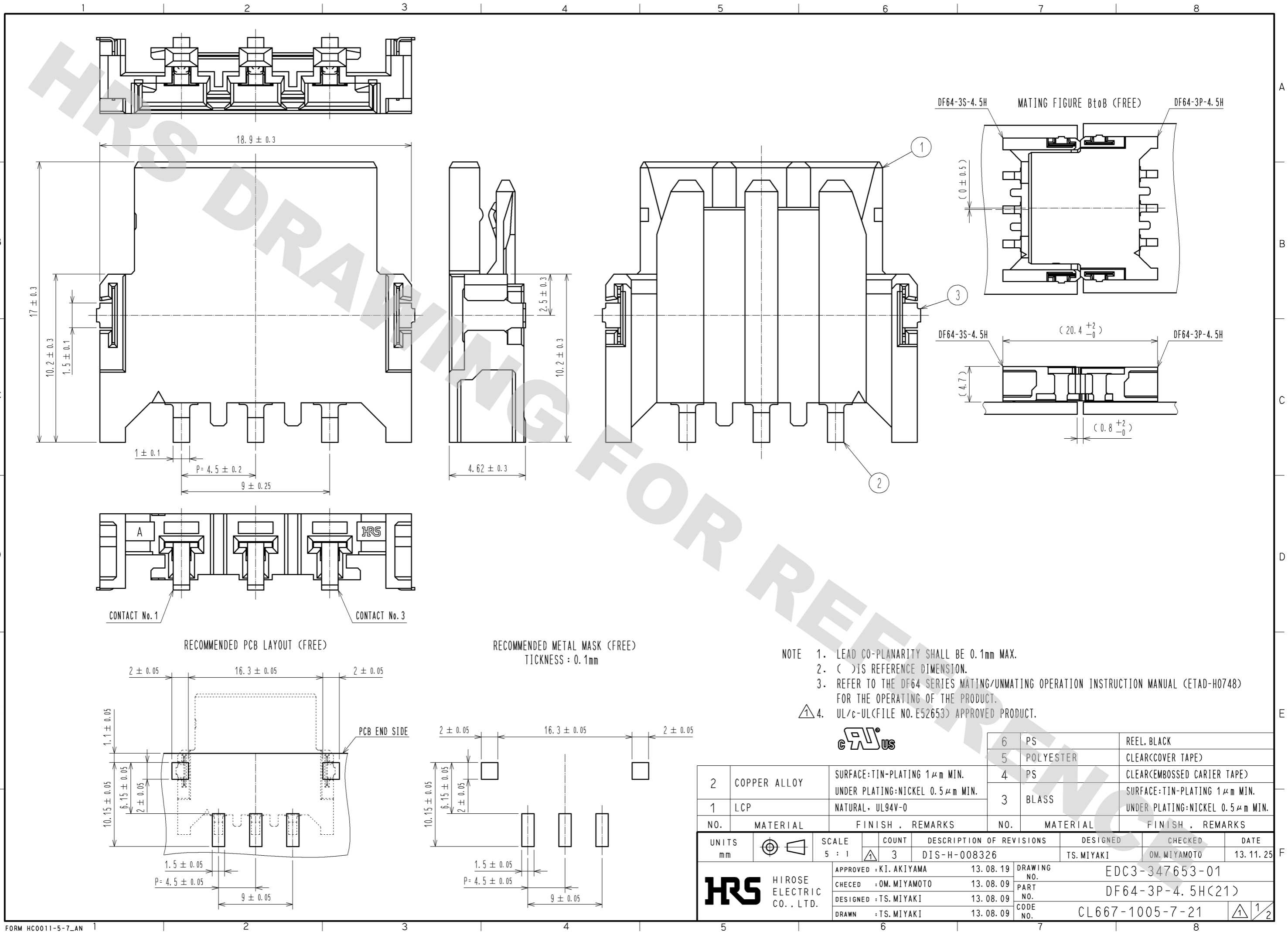


DRAWING FOR REFERENCE: This is subject to change without notice  
12/05/2013

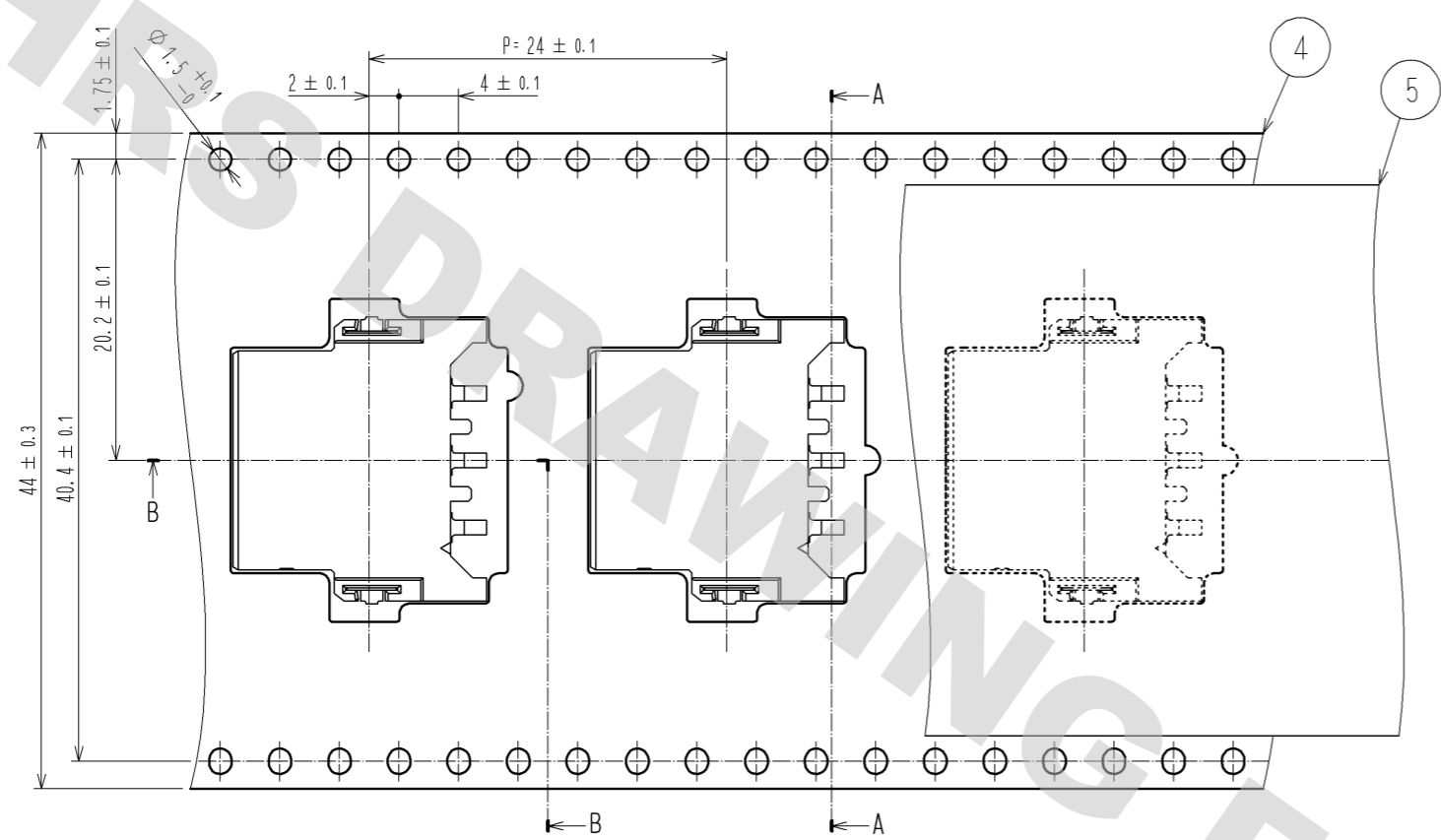


- NOTE
1. LEAD CO-PLANARITY SHALL BE 0.1mm MAX.
  2. ( ) IS REFERENCE DIMENSION.
  3. REFER TO THE DF64 SERIES MATING/UNMATING OPERATION INSTRUCTION MANUAL (ETAD-H0748) FOR THE OPERATING OF THE PRODUCT.
  4.  $\triangle$  UL/c-UL (FILE NO. E52653) APPROVED PRODUCT.

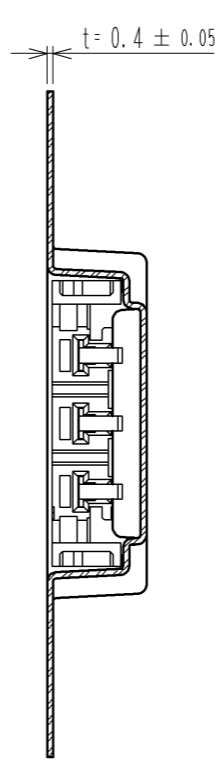


2	COPPER ALLOY	SURFACE: TIN-PLATING 1μm MIN. UNDER PLATING: NICKEL 0.5μm MIN.	6	PS	REEL, BLACK
1	LCP	NATURAL, UL94V-0	5	POLYESTER	CLEAR(COVER TAPE)
			4	PS	CLEAR(EMBOSSED CARRIER TAPE)
			3	GLASS	SURFACE: TIN-PLATING 1μm MIN. UNDER PLATING: NICKEL 0.5μm MIN.
NO.	MATERIAL	FINISH . REMARKS	NO.	MATERIAL	FINISH . REMARKS
UNITS mm		SCALE 5 : 1	COUNT $\triangle$ 3	DESCRIPTION OF REVISIONS DIS-H-008326	
DESIGNED TS. MIYAKI		CHECKED OM. MIYAMOTO		DATE 13.11.25	
APPROVED : KI. AKIYAMA		13.08.19		DRAWING NO. EDC3-347653-01	
CHECED : OM. MIYAMOTO		13.08.09		PART NO. DF64-3P-4.5H(21)	
DESIGNED : TS. MIYAKI		13.08.09		CODE NO. CL667-1005-7-21	
DRAWN : TS. MIYAKI		13.08.09		$\triangle$ 1/2	

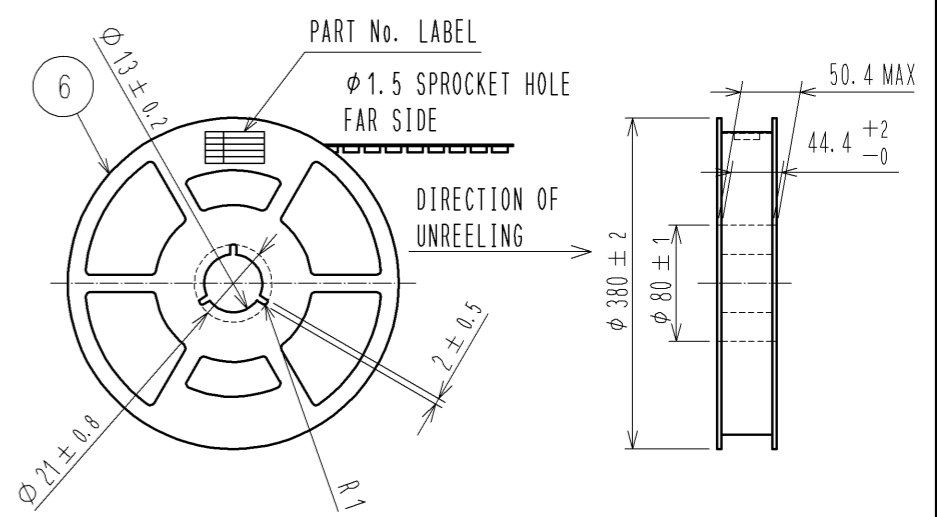
DRAWING FOR PACKING (2:1)



A-A(2:1)



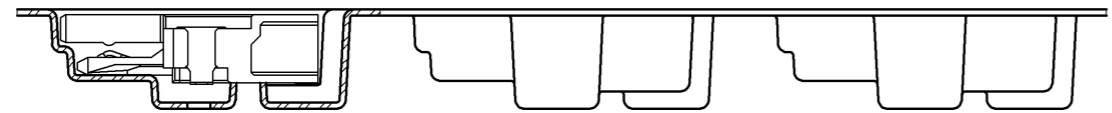
STYLE AND DIMENSION OF REEL(FREE)



DETAIL OF PART No. LABEL

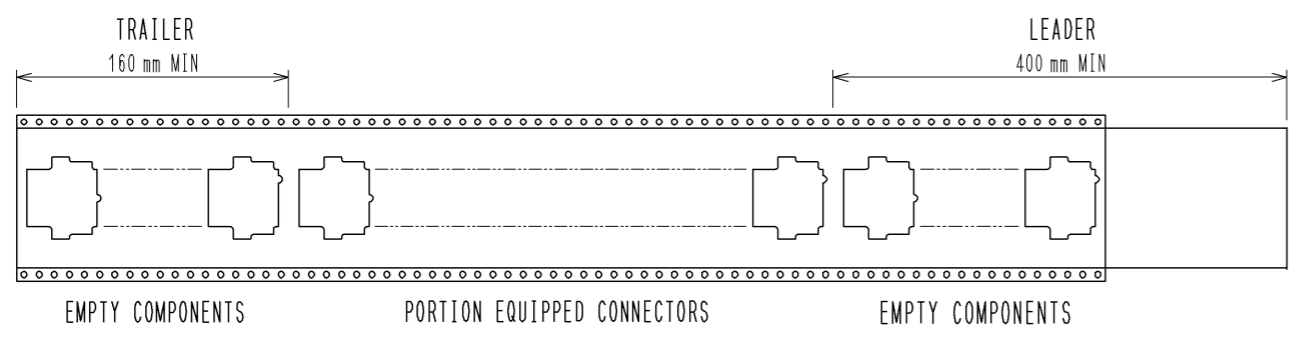
生産月日	年 月 日
図 番	CL667-1005-7-21
品 名	DF64-3P-4.5H(21)
納入数量	500 K0
納入者	ヒロセ電機(株)

B-B(2:1)

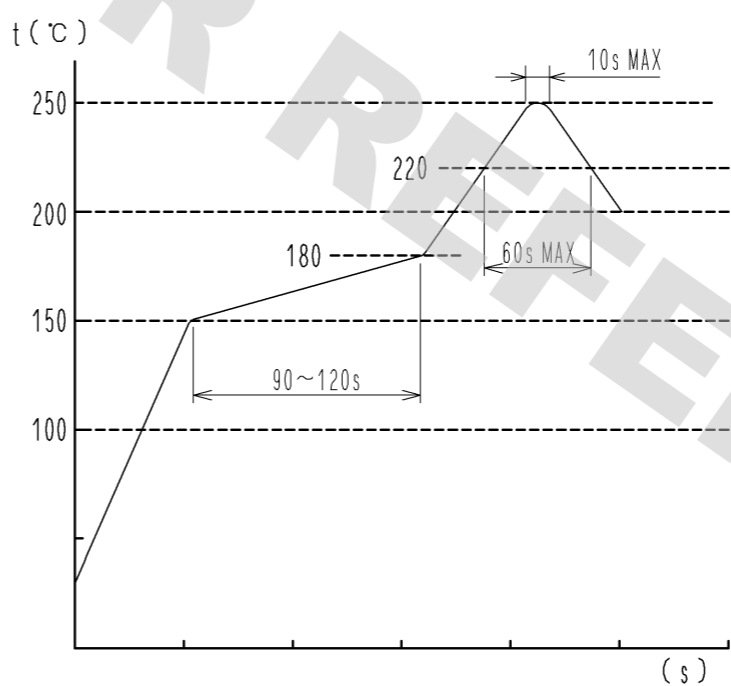


DIRECTION OF REELING →

①⑥ TAPING(FREE)



REFLOW TEMPERATURE PROFILE USING LEAD-FREE SOLDER PASTE (REFERENCE)



NUMBER OF REFLOW CYCLES 2 CYCLES MAX  
 THE TEMPERATURE IS MEASURED IN THE TERMINAL LEAD PART.  
 ADDITIONAL FACTORS, SUCH AS SOLDER PASTE TYPE,  
 PCB SIZE AND OTHER MOUNTED COMPONENTS COULD AFFECT  
 THE PROFILE.  
 THEREFOR, A THOROUGH EVALUATION OF MOUNTING CONDITION IS  
 REQUIRED PRIOR TO PRODUCTION.  
 TEMPERATURE IS MEASURED AT CONTACT LEAD.

- ① NOTE 5. 1REEL:500 CONNECTORS.
- ⑥ REEL TO JIS C 0806.(PACKAGING OF COMPONENTS FOR AUTOMATING HANDLING)
- 7. ( ) IS REFERENCE DIMENSION.

<b>HRS</b>	DRAWING NO.	EDC3-347653-01
	PART NO.	DF64-3P-4.5H(21)
	CODE NO.	CL667-1005-7-21
		①/2

DRAWING FOR REFERENCE: This is subject to change without notice 12/05/2013