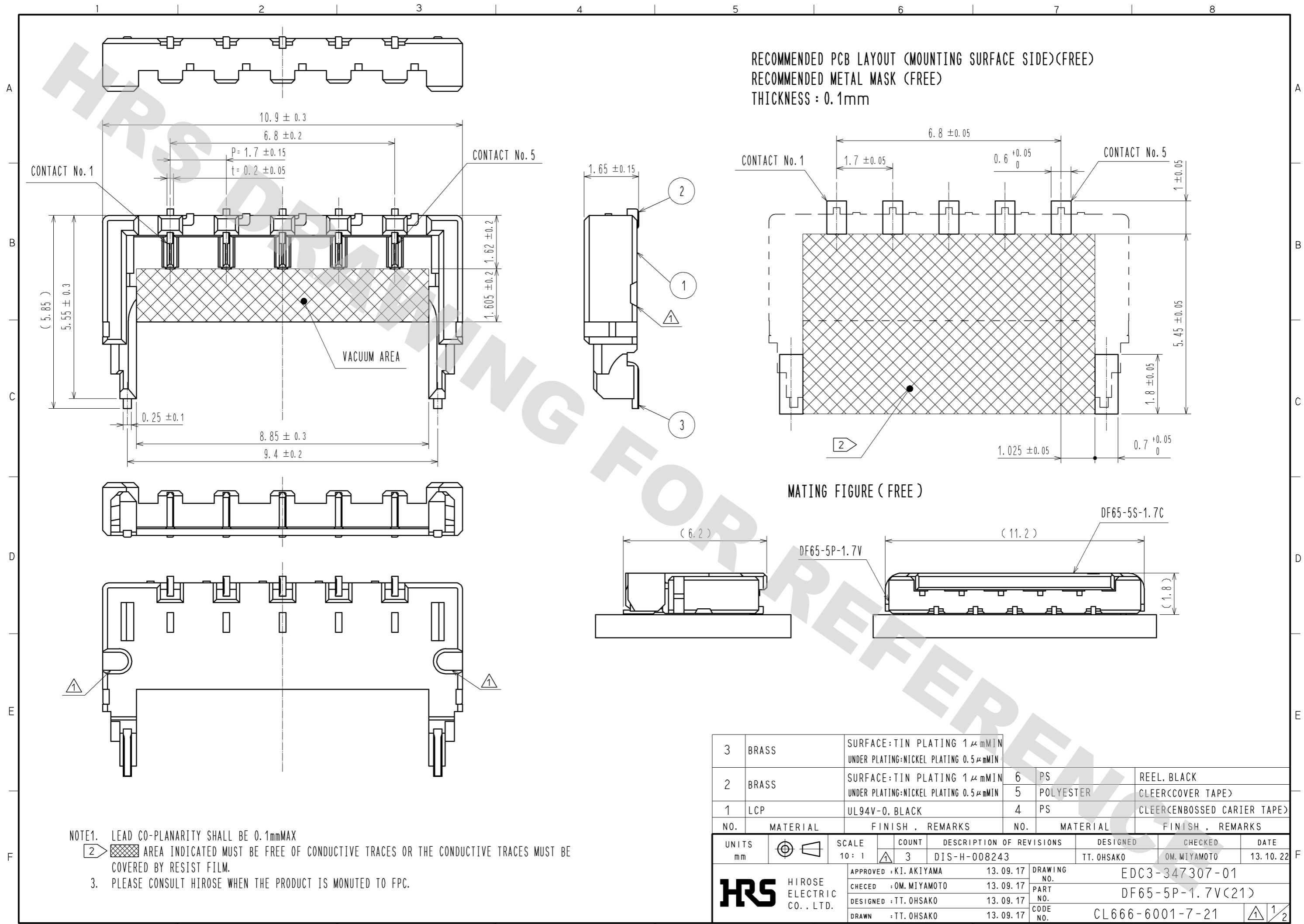
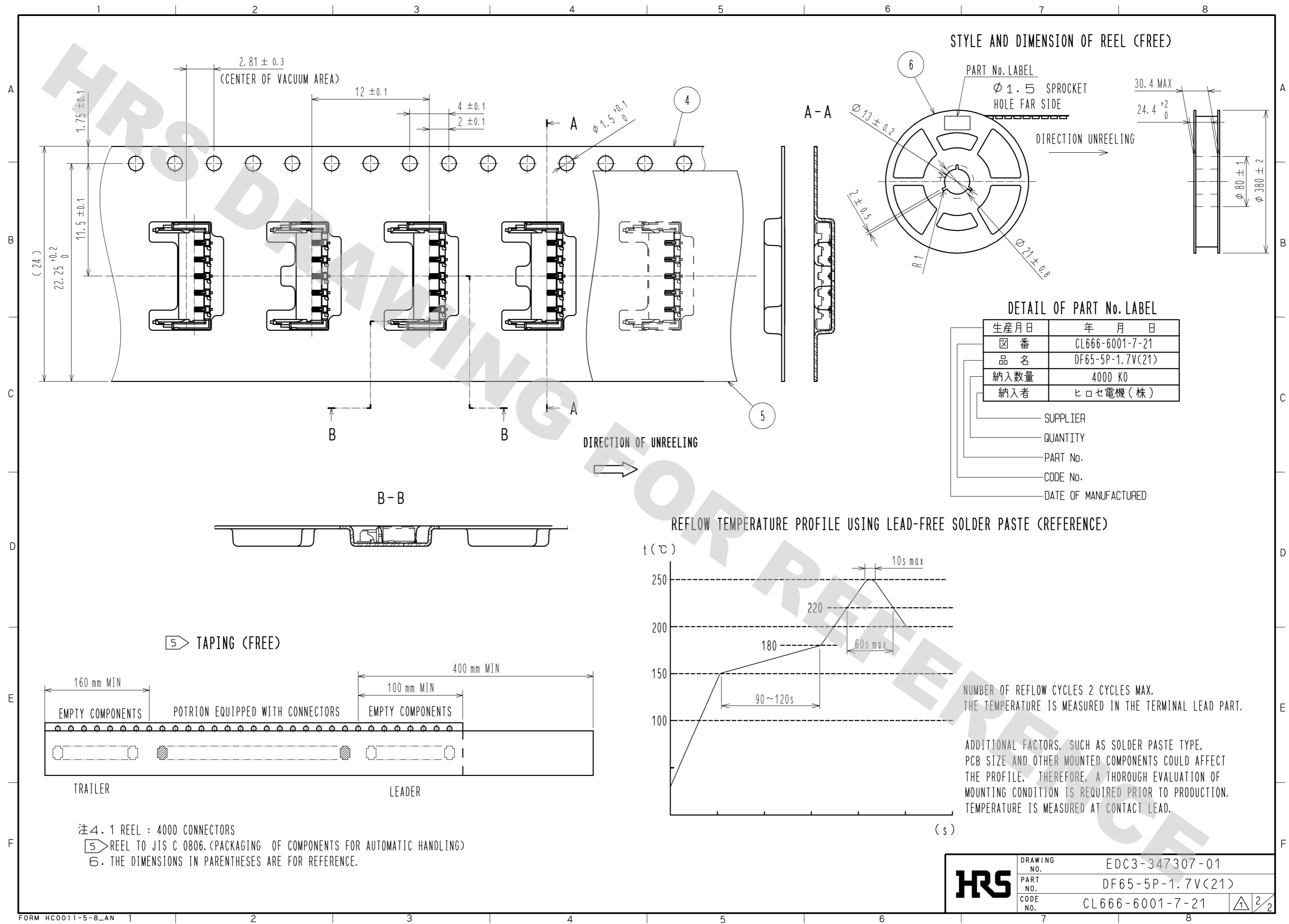


DRAWING FOR REFERENCE: This is subject to change without notice  
12/05/2013

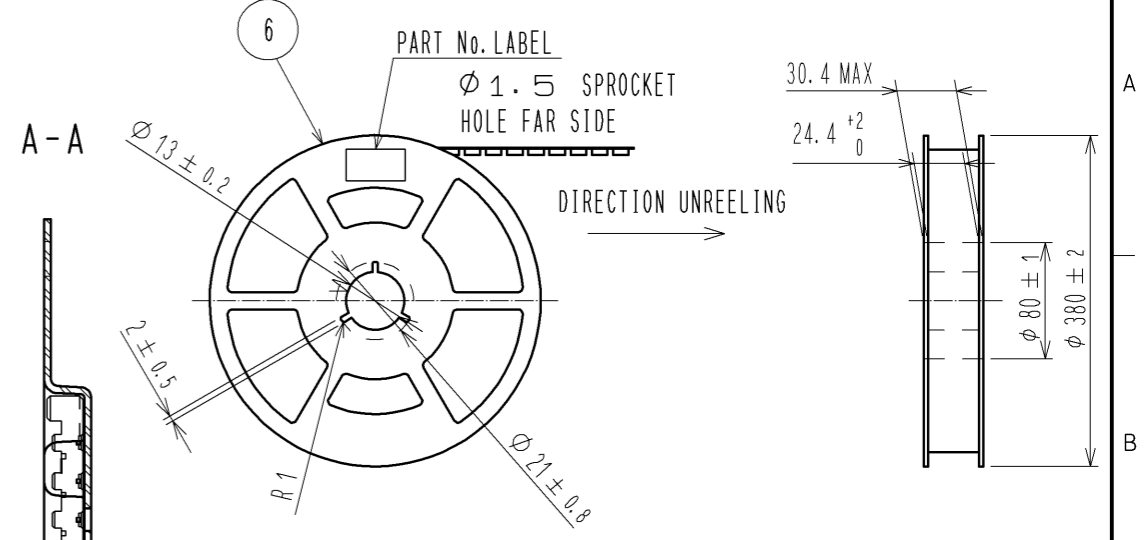


3	BRASS	SURFACE:TIN PLATING 1μmMIN UNDER PLATING:NICKEL PLATING 0.5μmMIN			
2	BRASS	SURFACE:TIN PLATING 1μmMIN UNDER PLATING:NICKEL PLATING 0.5μmMIN	6	PS	REEL. BLACK
1	LCP	UL94V-0. BLACK	5	POLYESTER	CLEER(COVER TAPE)
			4	PS	CLEER(CENBOSSED CARRIER TAPE)
NO.	MATERIAL	FINISH . REMARKS	NO.	MATERIAL	FINISH . REMARKS
UNITS	mm	SCALE 10:1	COUNT 3	DESCRIPTION OF REVISIONS	DESIGNED TT. OHSAKO
			APPROVED : KI. AKIYAMA	13.09.17	CHECKED OM. MIYAMOTO
			CHECED : OM. MIYAMOTO	13.09.17	DATE 13.10.22
			DESIGNED : TT. OHSAKO	13.09.17	DRAWING NO. EDC3-347307-01
			DRAWN : TT. OHSAKO	13.09.17	PART NO. DF65-5P-1.7V(21)
					CODE NO. CL666-6001-7-21

DRAWING FOR REFERENCE: This is subject to change without notice  
12/05/2013



STYLE AND DIMENSION OF REEL (FREE)

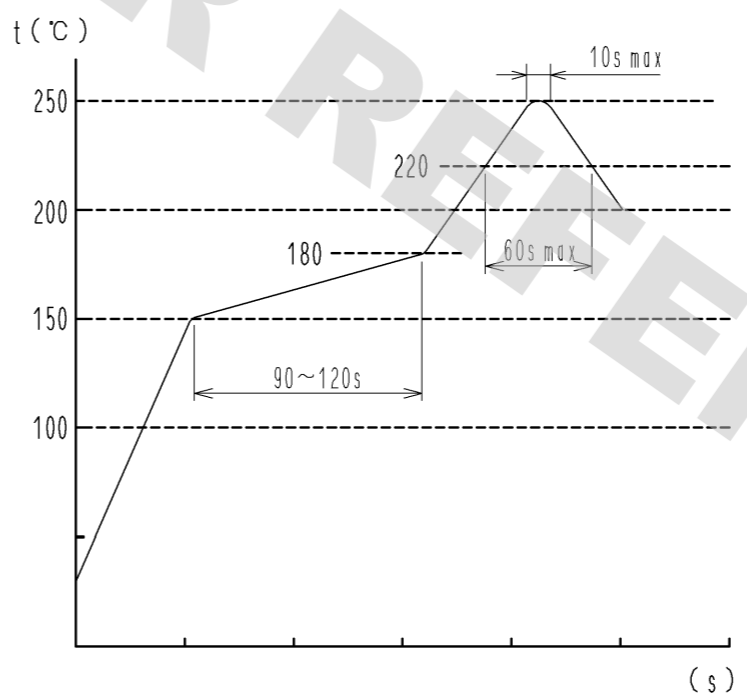


DETAIL OF PART No. LABEL

生産月日	年 月 日
箱 番	CL666-6001-7-21
品 名	DF65-5P-1.7V(21)
納入数量	4000 KO
納入者	ヒロセ電機(株)

- SUPPLIER
- QUANTITY
- PART No.
- CODE No.
- DATE OF MANUFACTURED

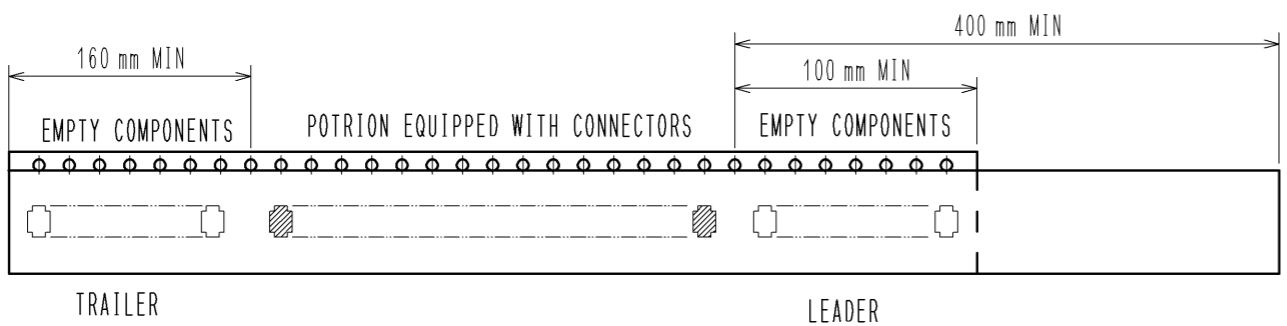
REFLOW TEMPERATURE PROFILE USING LEAD-FREE SOLDER PASTE (REFERENCE)



NUMBER OF REFLOW CYCLES 2 CYCLES MAX.  
THE TEMPERATURE IS MEASURED IN THE TERMINAL LEAD PART.

ADDITIONAL FACTORS, SUCH AS SOLDER PASTE TYPE,  
PCB SIZE AND OTHER MOUNTED COMPONENTS COULD AFFECT  
THE PROFILE. THEREFORE, A THOROUGH EVALUATION OF  
MOUNTING CONDITION IS REQUIRED PRIOR TO PRODUCTION.  
TEMPERATURE IS MEASURED AT CONTACT LEAD.

5 TAPING (FREE)



注4. 1 REEL : 4000 CONNECTORS  
5 REEL TO JIS C 0806. (PACKAGING OF COMPONENTS FOR AUTOMATIC HANDLING)  
6. THE DIMENSIONS IN PARENTHESES ARE FOR REFERENCE.

<b>HRS</b>	DRAWING NO.	EDC3-347307-01
	PART NO.	DF65-5P-1.7V(21)
	CODE NO.	CL666-6001-7-21
		1/2