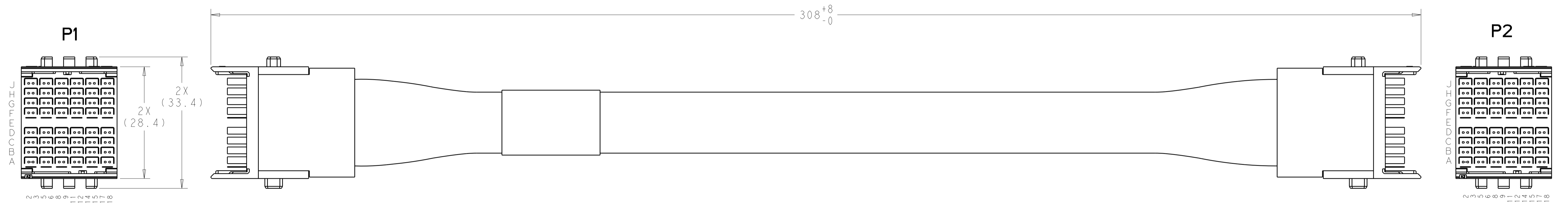
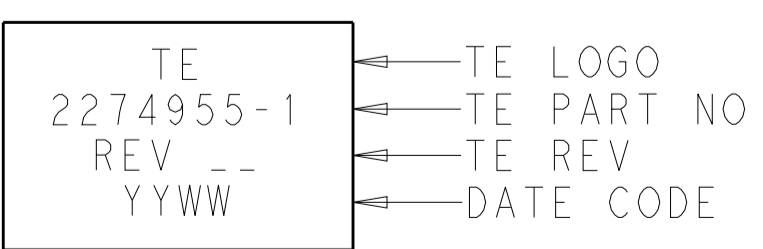


REVISIONS				
P	LTN	DESCRIPTION	DATE	APPROV
1		PROPOSED	01JUL2014	REH CR



△ LABEL INFORMATION:



2. EACH CABLE ASSEMBLY TESTED FOR CONTINUITY, OPENS AND SHORTS.
3. SEE SHEET 2 FOR WIRING DIAGRAM.
4. EACH CABLET TESTED PER 100 OHM LIMITS ON NETWORK ANALYZER, SERIALIZED AND DATA SAVED.

**THIS PRODUCT HAS NOT COMPLETED VALIDATION AND QUALIFICATION TESTING**

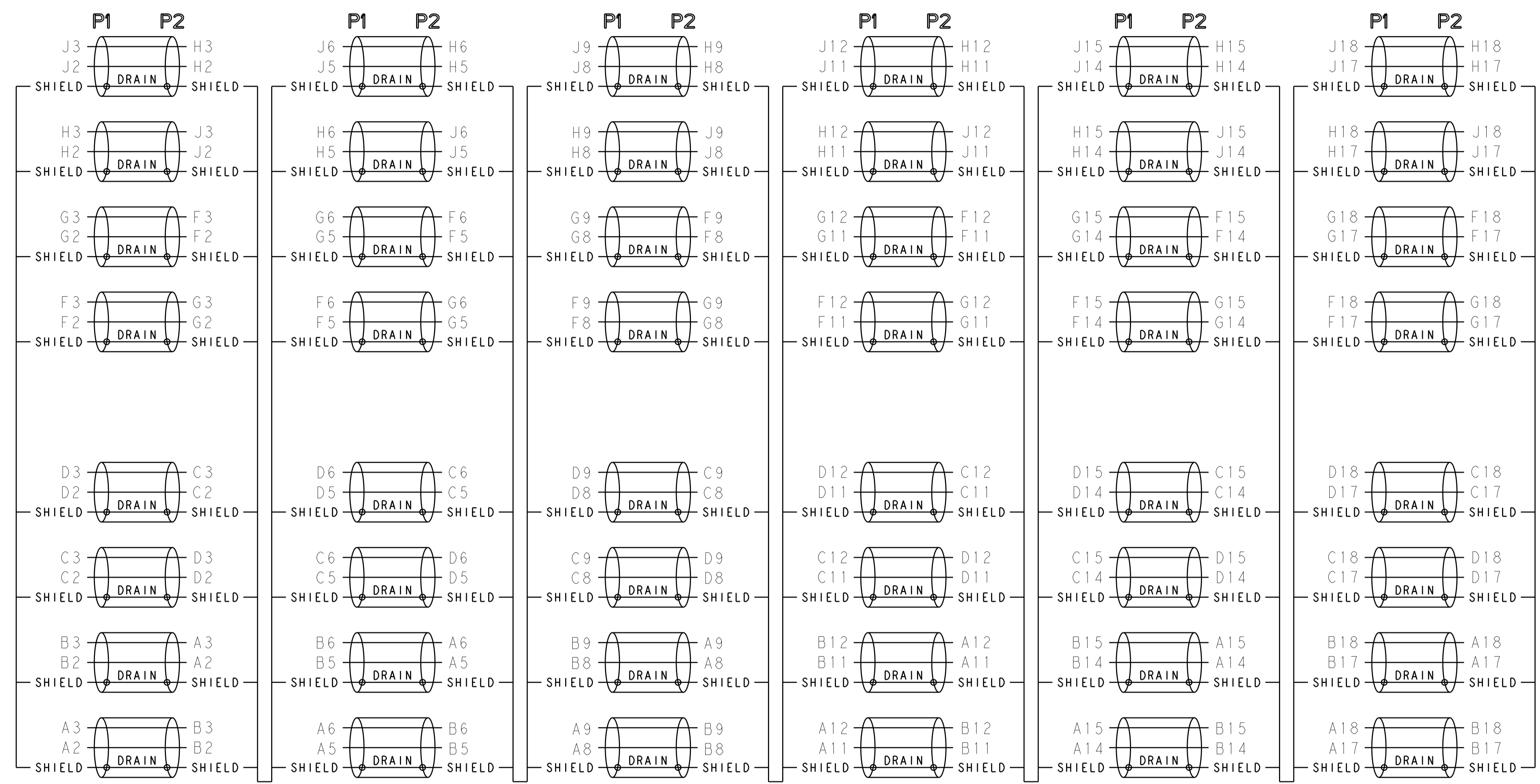
**PRELIMINARY NOT RELEASED FOR PRODUCTION**

2274955-1  
 PART NO

THIS DRAWING IS A CONTROLLED DOCUMENT.		OWN HAMMER	01JUL2014		TE Connectivity CABLE ASSEMBLY, 9 PAIR 6 COLUMN, PIR, 100 OHM, STRADA WHISPER
DIMENSIONS:		CHK C. BLITZER	02JUL2014		
TOLERANCES UNLESS OTHERWISE SPECIFIED:		APPR C. BLITZER	02JUL2014		
mm		NAME			
0 PLC	±	PRODUCT SPEC			
1 PLC	±	APPLICATION SPEC			
2 PLC	±	SIZE			
3 PLC	±	CAGE CODE			
4 PLC	±	DRAWING NO			
ANGLES	±	RESTRICTED TO			
MATERIAL	FINISH	WEIGHT			
		A1			
		C=2274955			
		Customer Drawing			
		SCALE 2:1 SHEET 1 OF 2 REV 1			

REVISIONS				
P.	LTN	DESCRIPTION	DATE	APVD
-	-	SEE SHEET 1	-	-

### WIRING DIAGRAM



**THIS PRODUCT HAS NOT COMPLETED VALIDATION AND QUALIFICATION TESTING**

**PRELIMINARY NOT RELEASED FOR PRODUCTION**

THIS DRAWING IS A CONTROLLED DOCUMENT.		OWN: HAMNER 01JUL2014	TE Connectivity
DIMENSIONS: mm		CHK: C. RITTER 02JUL2014	
		APVD: C. RITTER 02JUL2014	NAME: CABLE ASSEMBLY, 9 PAIR, 6 COLUMN, PIR, 100 OHM, STRADA WHISPER
TOLERANCES UNLESS OTHERWISE SPECIFIED:		PRODUCT SPEC	SIZE: A1
0 PLC ±		APPLICATION SPEC	CAGE CODE: C=2274955
1 PLC ±		WEIGHT	RESTRICTED TO
2 PLC ±		Customer Drawing	SCALE: 2:1
3 PLC ±			SHEET 2 OF 2
4 PLC ±			REV 1
ANGLES ±			
FINISH			