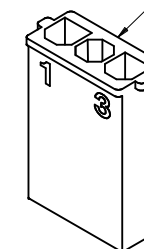


| ITEM | NUMBER     | MATERIAL  | COLOR                 |
|------|------------|---|-----------------------|
|      | 43680-2003 | UL94V-0 NYLON                                       | BLACK                 |
|      | 43680-1003 | UL94V-2 NYLON                                       | NATURAL (TRANSLUCENT) |
|      | 43680-3003 | UL94V-2 NYLON,<br>IEC 60335-1,<br>GLOW WIRE CAPABLE | BLACK                 |

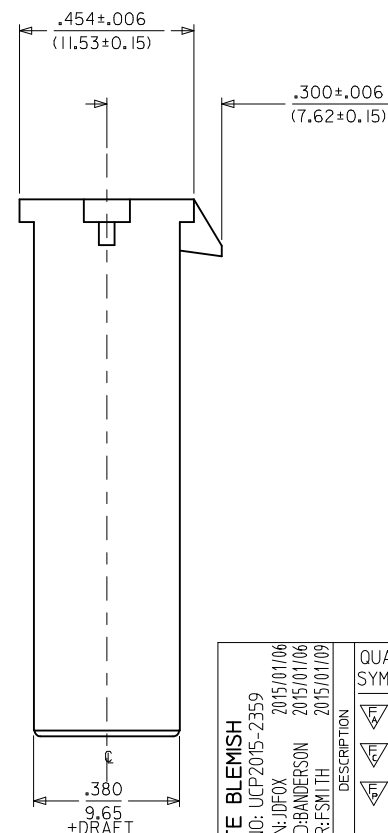
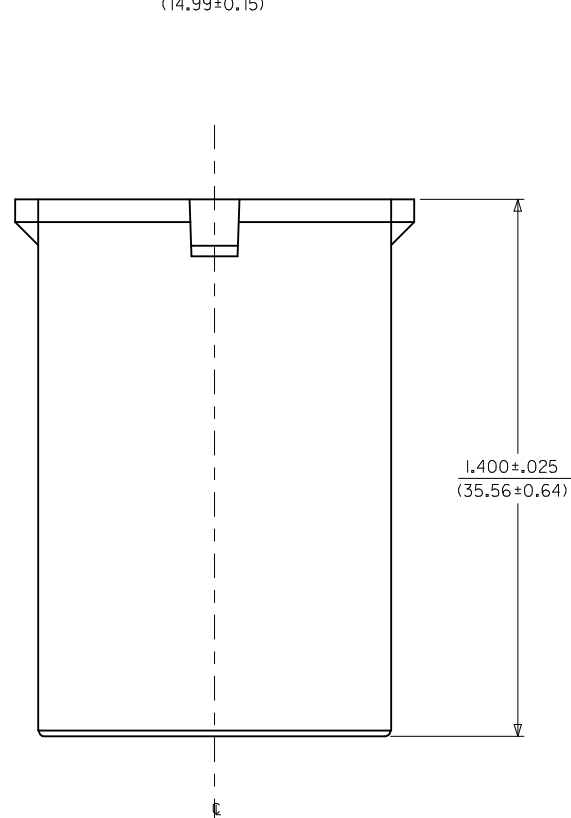
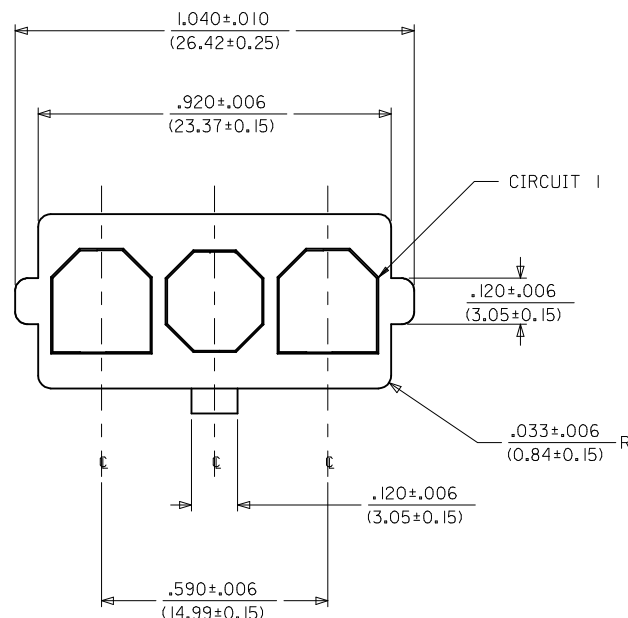
# NOTES:

1. MATERIAL: SEE CHART.
2. FINISH: NONE.
3. PRODUCT SPECIFICATION: PS-44441-9999.
4. PACKAGING: PK-43680-001.
5. THIS CONNECTOR HOUSING FOR USE WITH 43178-\*\*\*\* TERMINALS.
6. THIS CONNECTOR HOUSING WILL MATE TO 43335-\*\*\*\*, 43179-\*\*\*\*3 AND 44441-\*\*\*\*3 HOUSINGS.
7. PARTS CONFORM TO CLASS B REQUIREMENTS OF COSMETIC SPEC PS-45499-002.  
- SOME PARTS MAY HAVE A BLEMISH NEAR THE GATE THAT DOES NOT AFFECT FUNCTIONALITY.

LOCKING NUB IS LOCATED HERE



43680-\*003  
(NO SCALE)



|   |                    |   |  |  |   |                  |  |                               |   |  |  |  |  |
|---|--------------------|---|--|--|---|------------------|--|-------------------------------|---|--|--|--|--|
| GATE BLEMISH<br>EC NO: UCP2015-2359<br>DRWN: DFOX 2015/01/06<br>CHKD: BANDERSON 2015/01/06<br>APPR: FSMITH 2015/01/09 | DESCRIPTION<br>REV | QUALITY SYMBOLS<br><div>▽=0</div> <div>▽=0</div> <div>▽=0</div> | GENERAL TOLERANCES (UNLESS SPECIFIED)                |  | DIMENSION STYLE<br>IN/MM  |                  | SCALE<br>4:1   | DESIGN UNITS<br>INCH          | THIRD ANGLE PROJECTION<br><div>☉</div> <div>□</div> |  |  |  |  |
|   |                    |   | <div>mm</div> <div>INCH</div>                        |  | DRAWN BY<br>CM  | DATE<br>03/22/96 | TITLE<br>3-CIR. PLUG HOUSING<br>.125/(3.18)X.020/(0.51)<br>SABRE - TPA |                               |   |  |  |  |  |
|   |                    |   | 4 PLACES ± --- ± ---                                 |  | CHECKED BY<br>KBP   | DATE<br>03/22/96 |  |                               |   |  |  |  |  |
|   |                    |   | 3 PLACES ± --- ± .010                                |  | APPROVED BY<br>FSMITH   |                  | DATE<br>2015/01/09   | DOCUMENT NO.<br>SD-43680-*003 |   |  |  |  |  |
|   |                    |   | 2 PLACES ± 0.25 ± .014                               |  | MATERIAL NO.<br>SEE CHART   |                  | SHEET NO.<br>1 OF 1  |                               |   |  |  |  |  |
|   |                    |   | 1 PLACE ± 0.35 ± ---                                 |  | THIS DRAWING CONTAINS INFORMATION THAT IS PROPRIETARY TO MOLEX INCORPORATED AND SHOULD NOT BE USED WITHOUT WRITTEN PERMISSION |                  |  |                               |   |  |  |  |  |
|   |                    |   | 0 PLACE ± --- ± ---                                  |  |   |                  |  |                               |   |  |  |  |  |
|   |                    |   | ANGULAR ± 1/2°                                       |  |   |                  |  |                               |   |  |  |  |  |
|   |                    |   | DRAFT WHERE APPLICABLE MUST REMAIN WITHIN DIMENSIONS |  |   |                  |  |                               |   |  |  |  |  |
|   |                    |   | SIZE (C)   |  |   |                  |  |                               |   |  |  |  |  |