

MATERIALS AND FINISH:

SHELL: STEEL MATERIAL, NICKEL FINISH
 INSULATOR: (SEE CHART) = 260°C, UL 94V-0 RATED, BLACK
 CONTACT MATERIAL: COPPER ALLOY
 CONTACT FINISH: SELECT GOLD PLATING

ELECTRICAL:



CONTACT CURRENT RATING: 3 AMPS
 CONTACT RESISTANCE: 10 Milliohms Max.
 DIELECTRIC WITHSTANDING VOLTAGE: 1,000VAC Min.
 INSULATION RESISTANCE: 5 GOHMS Min.
 TEMPERATURE RATING: -55° ~ +125° C

180-MYY-1XYRYYY

SERIES _____
 MACHINED CONTACTS _____
 POSITION _____
 15 _____
 26 _____
 44 _____
 62 _____
 GENDER _____
 1 = MALE
 X = CONTACT LENGTH _____
 1 = 0.256"
 A = 0.140"
 SHELL PLATING _____
 3 = NICKEL
 RoHS (HIGH TEMP.) 260° PROCESS _____
 HARDWARE _____
 00 = $\varnothing 0.120$ " HOLE
 01 = 0.098" 4-40 INSERT, BOARD SIDE
 02 = 0.250" 4-40 INSERT, BOARD SIDE
 03 = 0.250" 4-40 INSERT, MATING SIDE
 05 = 0.224" 4-40 BOARD LOCK, BOARD SIDE
 08 = 0.228" BOARD LOCK, BOARD SIDE
 91 = 0.224" BOARD LOCK, BOARD SIDE
 0.189" SCREW LOCK, MATING SIDE
 CONTACT PLATING _____
 1 = GOLD FLASH, ENTIRE CONTACT
 2 = 30u" GOLD, ENTIRE CONTACT

DIMENSIONS (IN.)					
No. OF PINS	A	B	C	D	INSULATOR MATERIAL
15	0.665	0.984	1.213	0.090	PA9T
	16.90	25.00	30.80	2.29	
26	0.994	1.311	1.543	0.090	PA9T
	25.25	33.30	39.20	2.29	
44	1.534	1.852	2.089	0.090	PA9T
	38.95	47.05	53.05	2.29	
62	2.181	2.500	2.732	0.095	PA6T
	55.40	63.50	69.40	2.41	

DO NOT SCALE FROM DRAWING

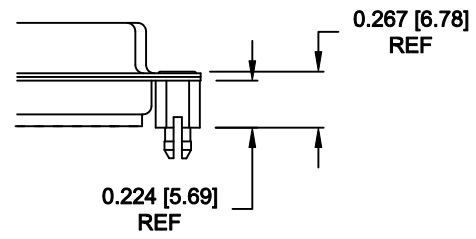
	THESE DRAWINGS AND SPECIFICATIONS ARE THE PROPERTY OF NorComp AND SHALL NOT BE REPRODUCED, COPIED OR USED AS THE BASIS FOR THE MANUFACTURE OF SALE OF APPARATUS WITHOUT WRITTEN PERMISSION.		DRAWN: C. SMITH	DATE: 03-16-07
				CHECKED:
		SCALE: 1 : 1	SHEET 1 OF 3	REV 9
		DWG NO. 180-MYY-11YRYYY		

RoHS COMPLIANT

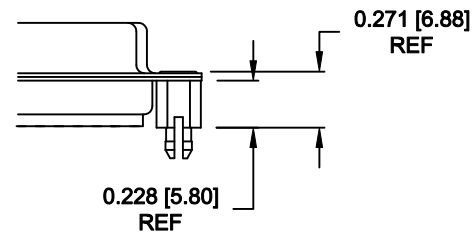
TOLERANCE:
ALL DIMENSIONS ARE ±0.010

ALL CLINCH-NUTS ARE 4-40 INTERNAL THREADS

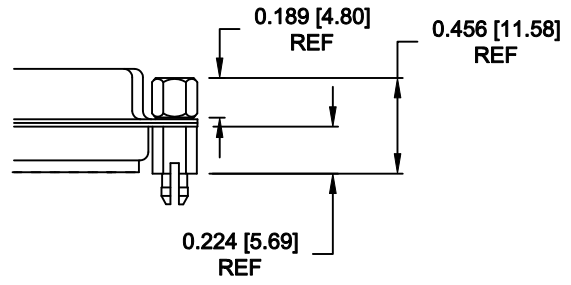
05X 0.224" BOARD SIDE - CN10



08X 0.228" BOARD SIDE - CN10

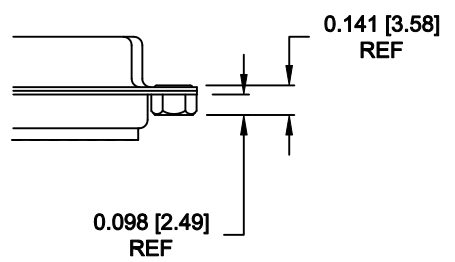


91X 0.224" BOARD SIDE
0.189 MATING SIDE
CN10/SFSO4404

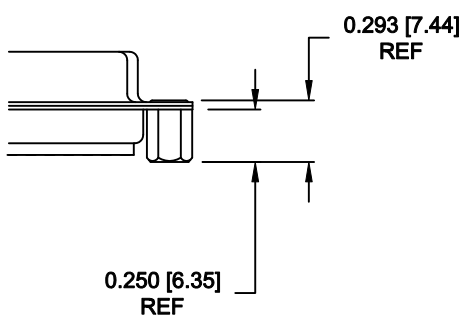


NOTE: 4-40 FEMALE SCREW LOCK IS REMOVABLE

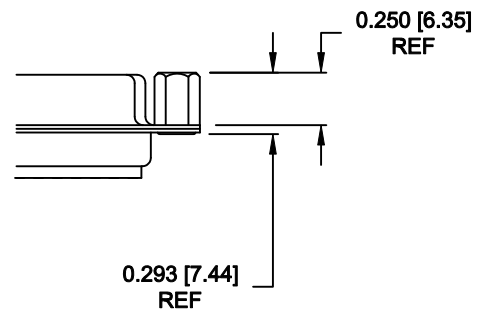
01X 0.098" (BOARD SIDE) - CN1



02X 0.250" (BOARD SIDE) - CN2



03X..... 0.250" (MATING SIDE) - CN8

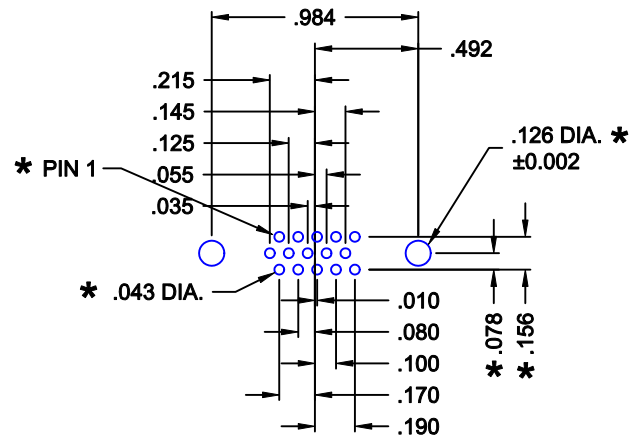


DO NOT SCALE FROM DRAWING

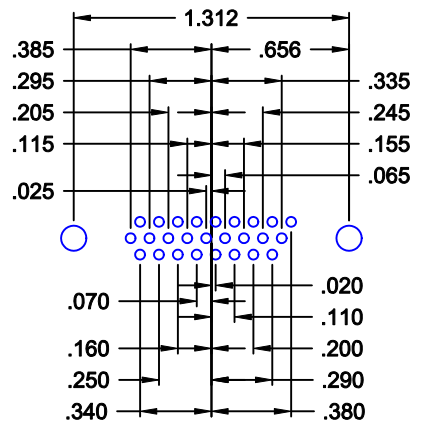
	THESE DRAWINGS AND SPECIFICATIONS ARE THE PROPERTY OF NorComp AND SHALL NOT BE REPRODUCED, COPIED OR USED AS THE BASIS FOR THE MANUFACTURE OF SALE OF APPARATUS WITHOUT WRITTEN PERMISSION.		DRAWN: C. SMITH	DATE: 02-12-08	
			CHECKED:	DATE:	
<h1>NorComp</h1>			SCALE:	SHEET 2 OF 3	REV 9
			DWG NO. 180-MYY-11YRYYY		

RoHS COMPLIANT

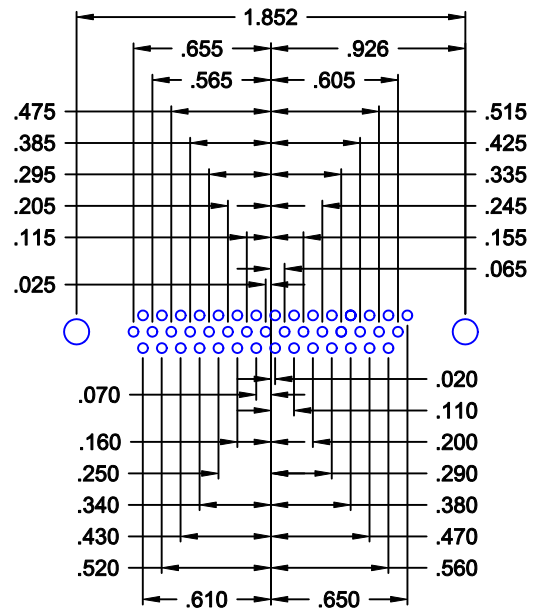
DESCRIPTION: LAYOUT - HIGH DENSITY - MACHINED CONTACTS - VERTICAL



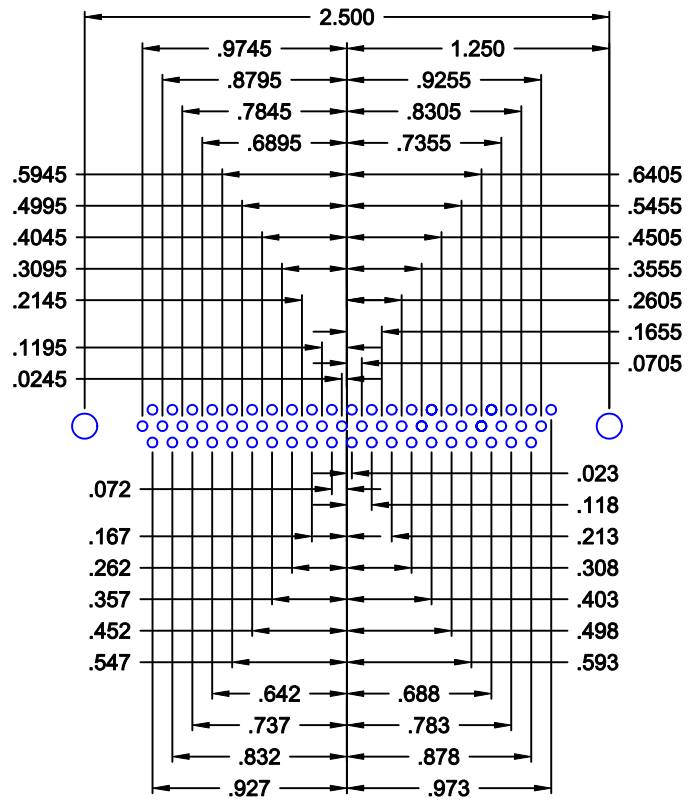
15 POSITION



26 POSITION




44 POSITION



62 POSITION

* TYP. ON ALL SIZES

DO NOT SCALE FROM DRAWING

	THESE DRAWINGS AND SPECIFICATIONS ARE THE PROPERTY OF NorComp AND SHALL NOT BE REPRODUCED, COPIED OR USED AS THE BASIS FOR THE MANUFACTURE OF SALE OF APPARATUS WITHOUT WRITTEN PERMISSION.		DRAWN: C. SMITH	DATE: 03-16-07
			CHECKED:	DATE:
<h1>NorComp</h1>		SCALE: 1 : 1	SHEET 3 OF 3	REV 9
		DWG NO. 180-MYY-11YRYYY		