

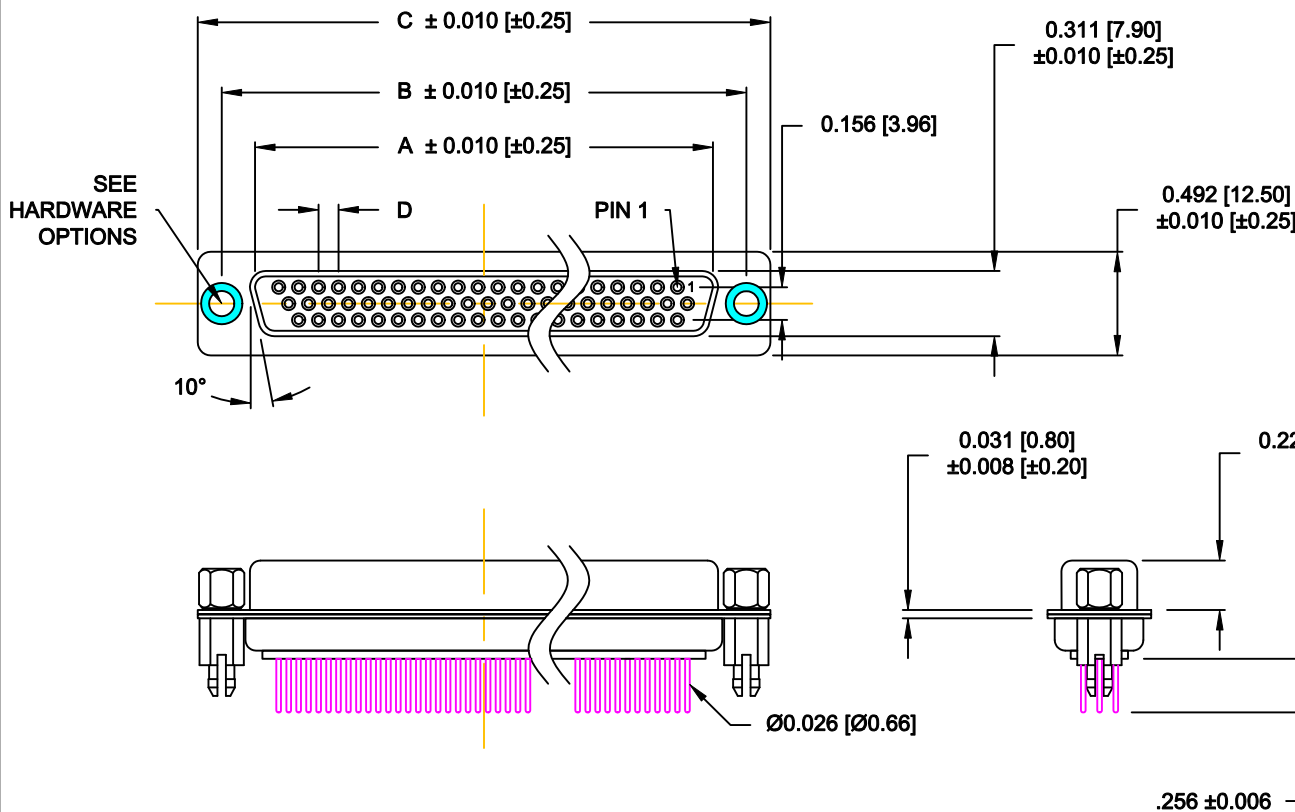
DESCRIPTION: HIGH DENSITY - MACHINED CONTACTS - VERTICAL

MATERIALS AND FINISH:

SHELL: STEEL MATERIAL, NICKEL FINISH
 INSULATOR: (SEE CHART) = 260°C,
 UL 94V-0 RATED, BLACK
 CONTACT MATERIAL: COPPER ALLOY
 CONTACT FINISH: SELECT GOLD PLATING

ELECTRICAL:

CONTACT CURRENT RATING: 3 AMPS
 CONTACT RESISTANCE: 10 Milliohms Max.
 DIELECTRIC WITHSTANDING VOLTAGE: 1,000VAC Min.
 INSULATION RESISTANCE: 5 GOHMS Min.
 TEMPERATURE RATING: -55° ~ +125° C



180-MYY-21YRYYY

SERIES	180-MYY-21YRYYY
MACHINED CONTACTS	
POSITION	
15	
26	
44	
62	
GENDER	
2 = FEMALE	
TERMINATION	
1 = 0.256"	
A = 0.140"	
SHELL PLATING	
3 = NICKEL	
RoHS (HIGH TEMP.) 260° PROCESS	
HARDWARE	
00 = Ø 0.120" HOLE	
01 = 0.098" 4-40 INSERT, BOARD SIDE	
02 = 0.250" 4-40 INSERT, BOARD SIDE	
03 = 0.250" 4-40 INSERT, MATING SIDE	
05 = 0.224" BOARD LOCK, BOARD SIDE	
08 = 0.228" BOARD LOCK, BOARD SIDE	
91 = 0.224" BOARD LOCK, BOARD SIDE	
0.189" SCREW LOCK, MATING SIDE	
CONTACT PLATING	
1 = GOLD FLASH, ENTIRE CONTACT	
2 = 30u" GOLD, ENTIRE CONTACT	
3 = 50u" GOLD, ENTIRE CONTACT	

DIMENSIONS (IN.)

No. OF PINS	A	B	C	D	INSULATOR MATERIAL
15	0.642	0.984	1.213	0.090	PA9T
	16.30	25.00	30.80	2.29	
26	0.969	1.311	1.543	0.090	PA9T
	24.60	33.30	39.20	2.29	
44	1.512	1.852	2.089	0.090	PA9T
	38.40	47.05	53.05	2.29	
62	2.159	2.500	2.732	0.095	PA6T
	54.84	63.50	96.40	2.41	

DO NOT SCALE FROM DRAWING



THESE DRAWINGS AND SPECIFICATIONS ARE THE PROPERTY OF NorComp AND SHALL NOT BE REPRODUCED, COPIED OR USED AS THE BASIS FOR THE MANUFACTURE OF SALE OF APPARATUS WITHOUT WRITTEN PERMISSION.

DRAWN: C. SMITH DATE: 03-16-07

CHECKED: DATE:

SCALE: 1 : 1 SHEET 1 OF 3 REV 10

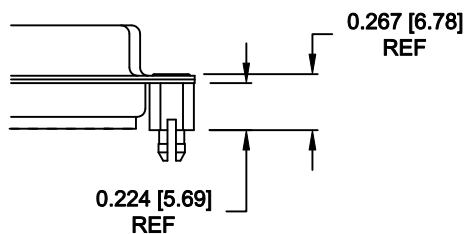
DWG NO. 180-MYY-21YRYYY

NorComp

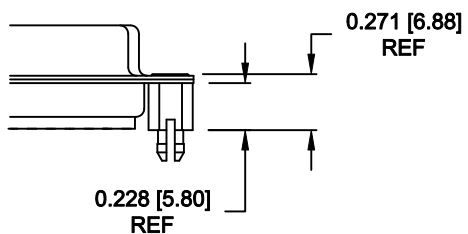
RoHS COMPLIANT

ALL CLINCH-NUTS ARE 4-40 INTERNAL THREADS

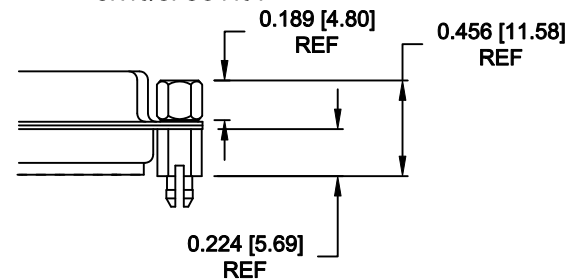
05X 0.224" BOARD SIDE - CN10



08X 0.228" BOARD SIDE - CN10

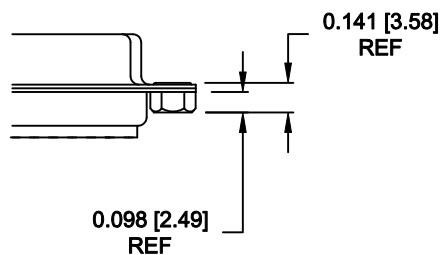


91X 0.224" BOARD SIDE
0.189 MATING SIDE
CN10/SFSO4404

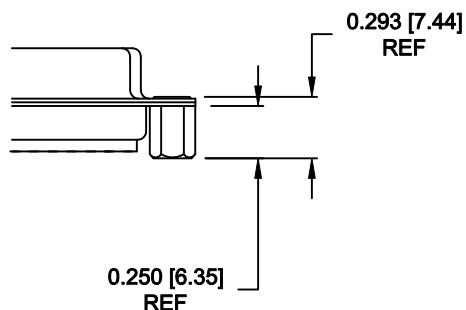


NOTE: 4-40 FEMALE SCREW LOCK IS REMOVABLE

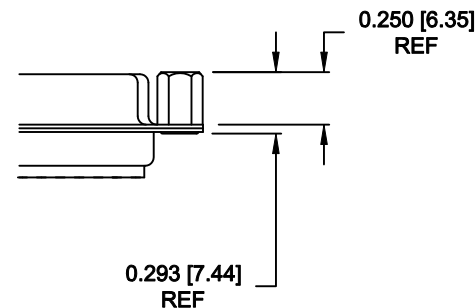
01X 0.098" (BOARD SIDE) - CN1



02X 0.250" (BOARD SIDE) - CN2



03X..... 0.250" (MATING SIDE) - CN8

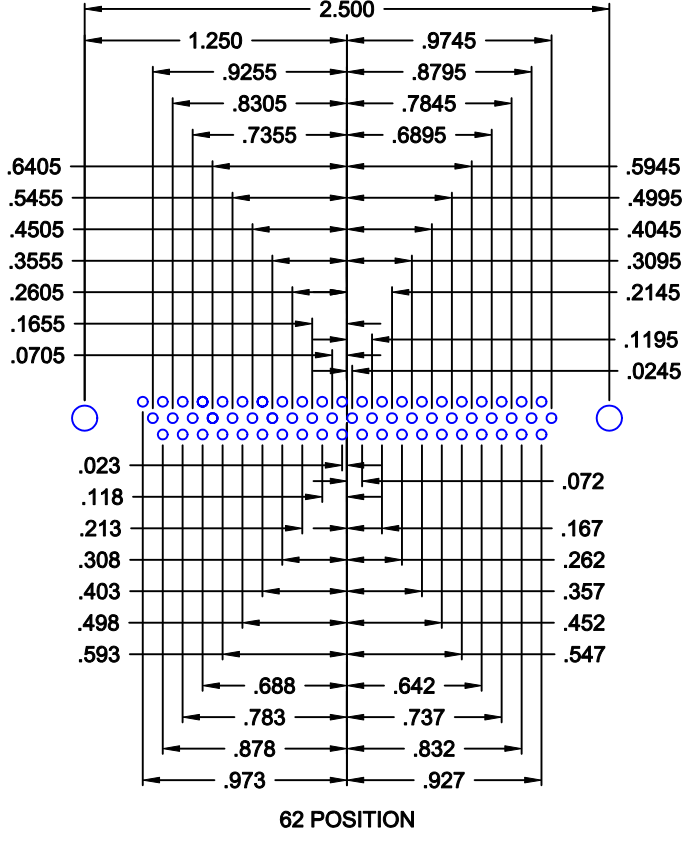
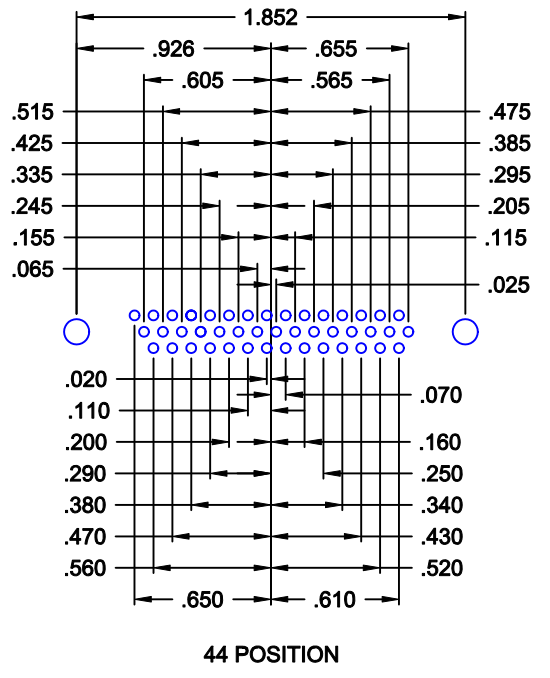
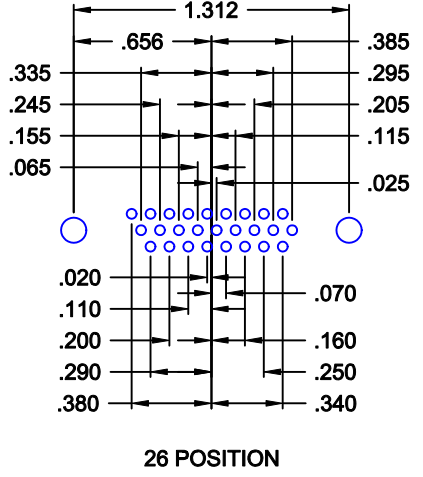
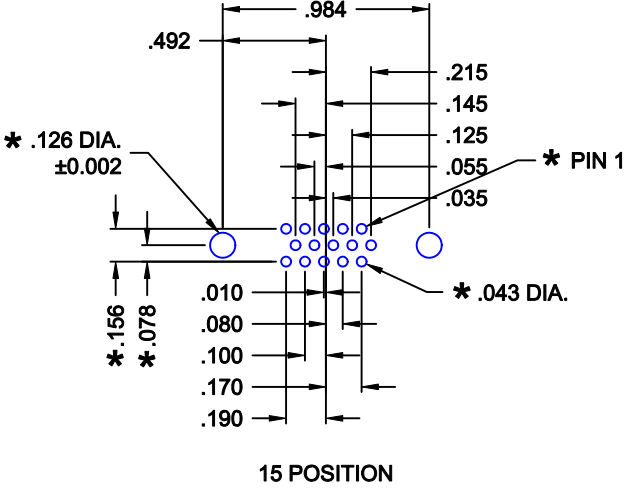


DO NOT SCALE FROM DRAWING

RoHS COMPLIANT

	THESE DRAWINGS AND SPECIFICATIONS ARE THE PROPERTY OF NorComp AND SHALL NOT BE REPRODUCED, COPIED OR USED AS THE BASIS FOR THE MANUFACTURE OF SALE OF APPARATUS WITHOUT WRITTEN PERMISSION.		DRAWN: C. SMITH	DATE: 02-12-08
			CHECKED:	DATE:
NorComp		SCALE:	SHEET 2 OF 3	REV 10
		DWG NO. 180-MYY-21YRYYY		

DESCRIPTION: HIGH DENSITY - MACHINED CONTACTS - VERTICAL



* TYP. ON ALL SIZES

DO NOT SCALE FROM DRAWING

	THESE DRAWINGS AND SPECIFICATIONS ARE THE PROPERTY OF NorComp AND SHALL NOT BE REPRODUCED, COPIED OR USED AS THE BASIS FOR THE MANUFACTURE OF SALE OF APPARATUS WITHOUT WRITTEN PERMISSION.		DRAWN: C. SMITH	DATE: 03-16-07
			CHECKED:	DATE:
<h1>NorComp</h1>	SCALE: 1 : 1	SHEET 3	OF 3	REV 10
	DWG NO. 180-MYY-21YRYYY			