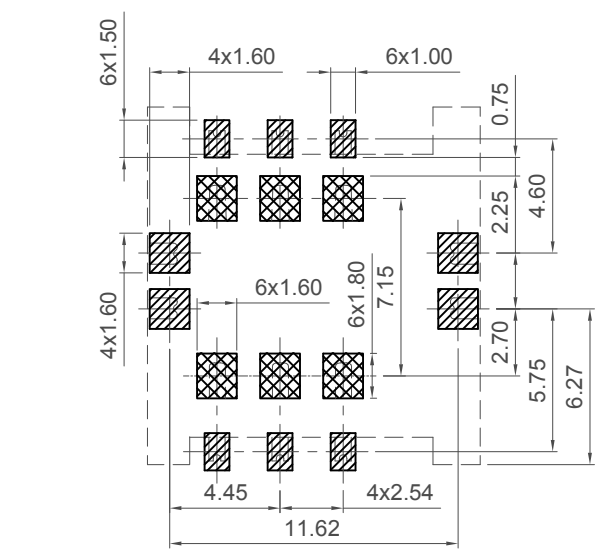
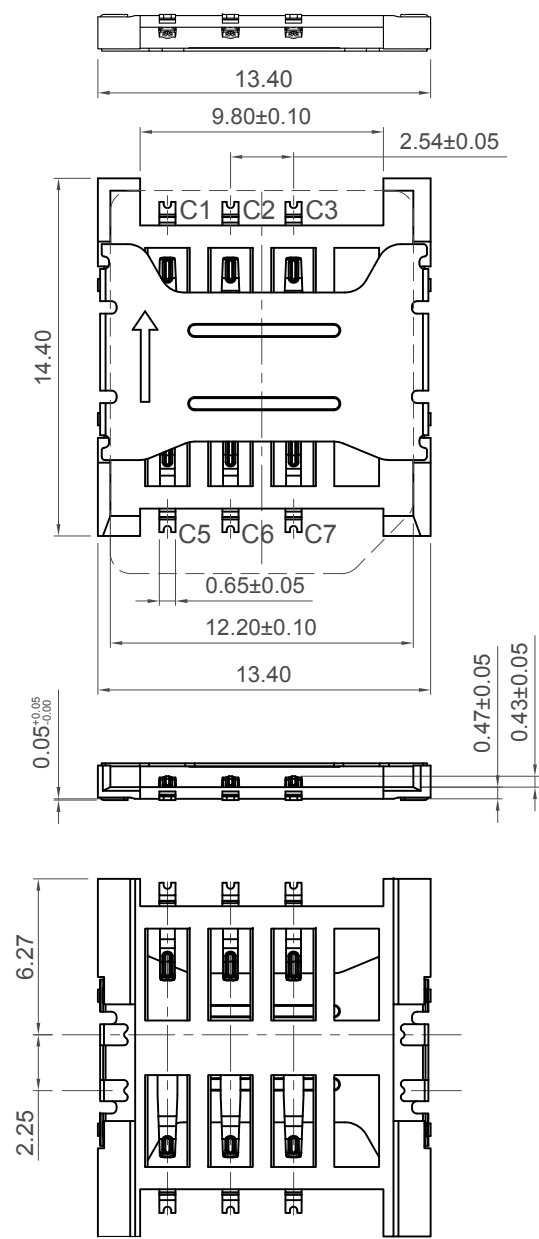
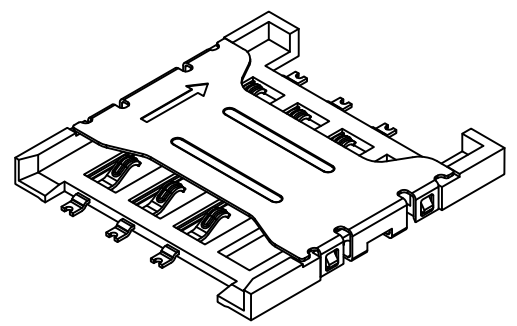
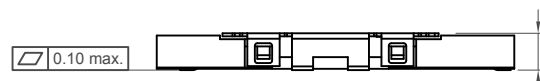


H  
G  
F  
E  
D  
C  
B  
A



**Recommended PCB Layout**  
 (Viewed from Component Side - Tolerance:±0.05mm)  
 ▨ Solder Area ▩ Keep Out Area □ Component Outline



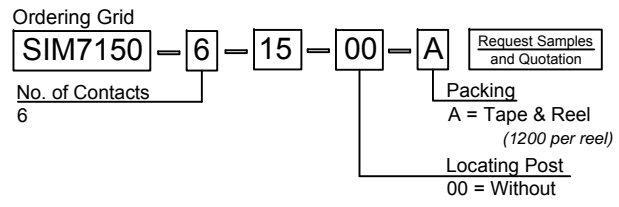
**Specifications 规格**

**Material 物料**  
 Plastic Housing 塑胶外壳: Hi-Temp Thermoplastic UL94V-0, Black  
 Contact Terminal 接触端子: Copper Alloy  
 Metallic Shell 金属外壳: Stainless Steel

**Plating 电镀**  
 Contact Terminal plating 接触端子部分电镀:  
 Under-plating 底层电镀: 50µ" min. Nickel all over  
 Contact Area 接触部分: Gold Flash  
 Soldering Area 焊接部分: Gold Flash  
 Metallic Shell plating 金属外壳电镀:  
 Under-plating 底层电镀: 30-50µ" Nickel all over  
 Soldering Area 焊接部分: Gold Flash

**Electrical 电气**  
 Voltage rating 电压额定值: 50V max.  
 Current Rating 电流额定值: 0.5 Amp  
 Contact Resistance 接触电阻值: 100 mΩ max.  
 Insulation Resistance 绝缘电阻值: 1000 MΩ min.  
 Dielectric Withstand Voltage 寒耐电压: 500 V AC

**Mechanical & Environmental 机械 & 环境**  
 Operating Temperature 工作温度: -40°C to +85°C  
 Durability 耐久性: 5,000 cycles



Part Number		Product Description	
SIM7150		Micro SIM Card Connector	
Drawing Date		Push-Pull Type, 6 Pin, SMT, 1.48mm Profile	
25th November 2014			
By	AJO	Tolerances (Except as Noted)	Units:
Detail	Drawing Release	Length	Metric (mm)
Revision	A	X.X ± 0.25	
Date	25/11/14	X.XX ± 0.15	
		X.XXX ± 0.10	± 3°

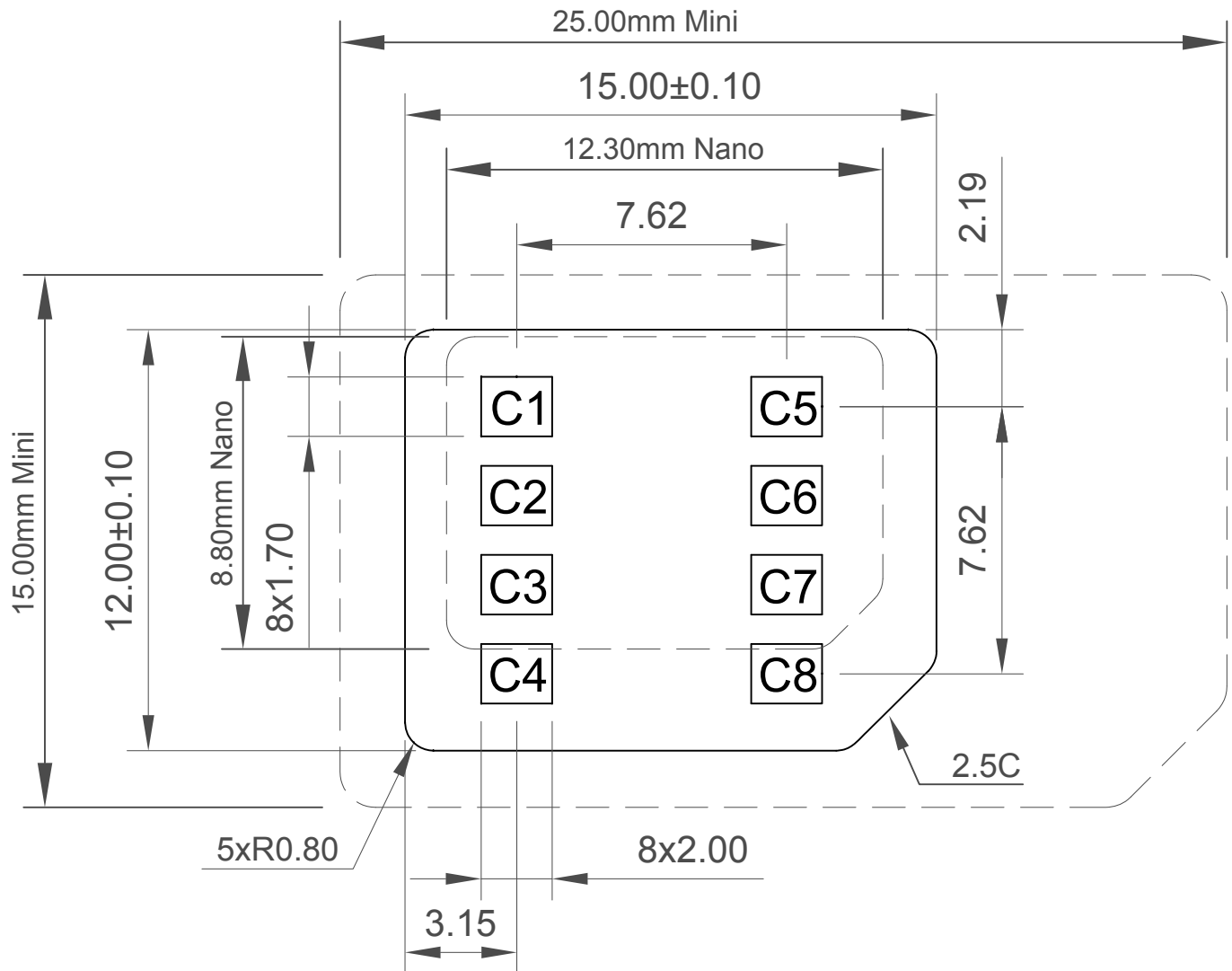
**GCT**  
 Global Connector Technology  
 www.gct.co

Not to Scale	Drawn By AJO	Sheet No. 1/3
--------------	--------------	---------------

1 2 3 4 5 6 7 8

# Micro SIM Reference

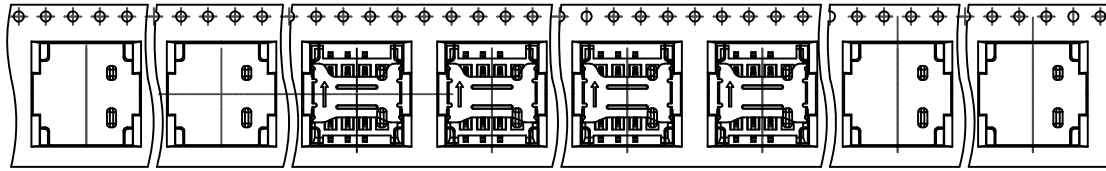
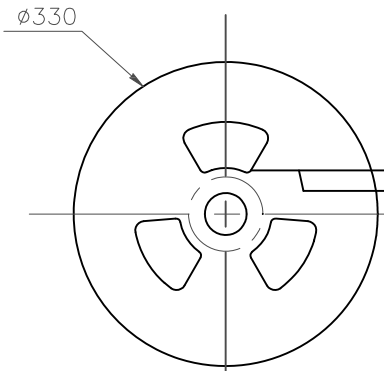
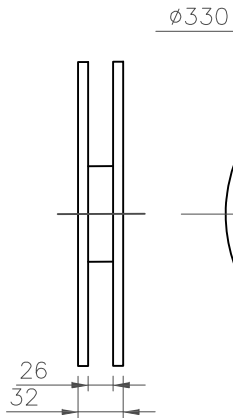
thickness =  $0.76 \pm 0.08$



C1	VCC
C2	RST
C3	CLK
C4	RFU
C5	GND
C6	Vpp
C7	I/O
C8	RFU

Part Number		Product Description	
SIM7150		Micro SIM Card Connector	
Drawing Date		Push-Pull Type, 6 Pin, SMT, 1.48mm Profile	
25th November 2014			
By	AJO	Tolerances (Except as Noted)	Units:
Detail	Drawing Release	Length	Metric (mm)
Revision	A	X.X ± 0.25	
Date	25/11/14	X.XX ± 0.15	
		X.XXX ± 0.05	
		± 3°	
			This drawing is confidential and copyright of Global Connector Technology, Ltd (GCT). This drawing must not be copied or disclosed without written consent. E & OE
			Global Connector Technology www.gct.co
Not to Scale	Drawn By AJO	Sheet No. 2/3	

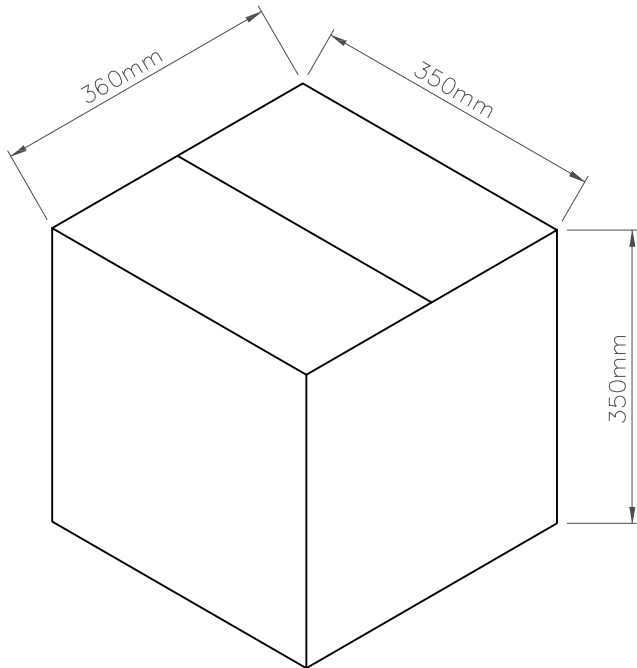
  
 PULL OUT DIRECTION



TAPE LENGTH  
TAIL PART(EMPTY)  
20PCS

COMPONENT SUPPLIER

TAPE LENGTH  
FIRST PART(EMPTY)  
20PCS



Products P/N	PCS/Reel	Reels/Carton	PCS/Carton
SIM7150	1200	10	12000

**Specifications:**

**Material:**

- Carrier Tape: PS
- Cover Tape: PET
- Reel: PS

Part Number		Product Description	
SIM7150		Micro SIM Card Connector	
Drawing Date		Push-Pull Type, 6 Pin, SMT, 1.48mm Profile	
25th November 2014			
By	AJO	Tolerances (Except as Noted)	Units:
Detail	Drawing Release	Length	Metric (mm)
Revision	A	Angle	
Date	25/11/14		



This drawing is confidential and copyright of Global Connector Technology, Ltd (GCT). This drawing must not be copied or disclosed without written consent. E & OE

**GCT**  
Global Connector Technology  
www.gct.co

Not to Scale | Drawn By AJO | Sheet No. 3/3