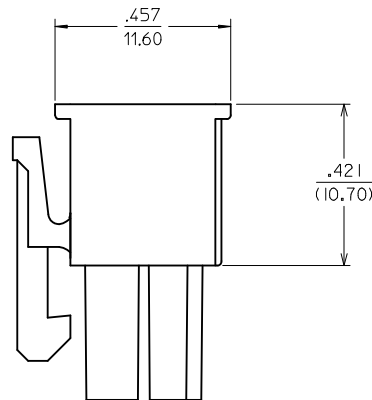
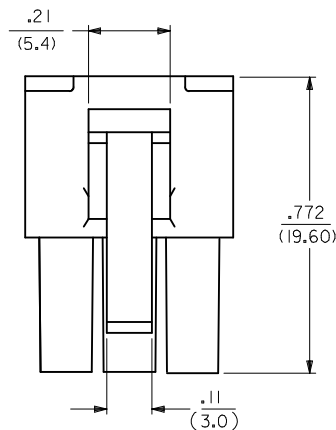
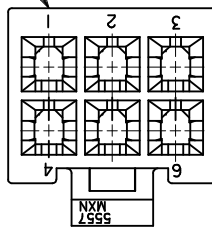


CIRCUIT NO.

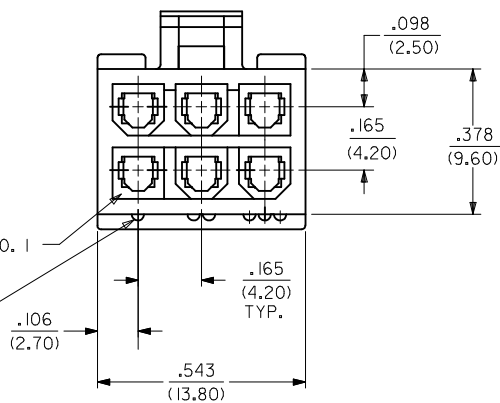


NOTES:

- 1) HOUSING MATERIAL: NYLON, UNFILLED UL94 V-0, COLOR: SEE CHART
- 2) FINISH: NONE
- 3) PRODUCT SPECIFICATION: PS-45558-001
- 4) PACKAGING SPECIFICATION: PK-5557-002
- 5) PARTS MATE WITH MINI-FIT JR. RIGHT ANGLE HEADER ASSEMBLIES 455580002, 455580003 AND 457320001.
- 6) PART TO BE USED WITH MOLEX FEMALE TERMINAL #5556.
- 7) ALL DIMENSIONS ARE REFERENCE UNLESS OTHERWISE SPECIFIED WITH A TOLERANCE.
- 8) PART IS NOT DESIGNED FOR CURRENT SHARING.
- 9) PARTS ARE NOT TO BE MATED OR UNMATED WHILE CIRCUITS ARE LIVE.
- 10) RIBS INDICATE CIRCUIT NUMBER.
- 11) PART CONFORMS TO CLASS "B" REQUIREMENTS OF COSMETIC SPECIFICATION PS-45499-002.

CKT. NO. 1

SEE NOTE 10



ADD 45559-0003 EC NO: UCP2015-2159 DRWN:JDOX 2015/01/16 CHKD:JBELL 2015/01/16 APPR:FSMITH 2015/02/09				DESCRIPTION REV	QUALITY SYMBOLS ▽=0 ▽=0 ▽=0	GENERAL TOLERANCES (UNLESS SPECIFIED)		DIMENSION STYLE IN/MM		SCALE 4:1	DESIGN UNITS METRIC	THIRD ANGLE PROJECTION			
		mm	INCH			DRAWN BY JJS	DATE 2003/11/11	TITLE 6 CKT. RECEPT. HOUSING SPECIAL POLARIZATION MINI-FIT JR. SERIES							
		4 PLACES	±---	±---			CHECKED BY GEP	DATE 2003/11/11							
		3 PLACES	±---	±---			APPROVED BY	DATE							
		2 PLACES	±---	±---			YLM	2003/11/11							
		1 PLACE	±---	±---			MATERIAL NO.		DOCUMENT NO.				SHEET NO.		
		0 PLACE	±				SEE CHART		SD-45559-001				1 OF 1		
		ANGULAR ±---°													
		DRAFT WHERE APPLICABLE MUST REMAIN WITHIN DIMENSIONS													
		SIZE C						THIS DRAWING CONTAINS INFORMATION THAT IS PROPRIETARY TO MOLEX INCORPORATED AND SHOULD NOT BE USED WITHOUT WRITTEN PERMISSION							