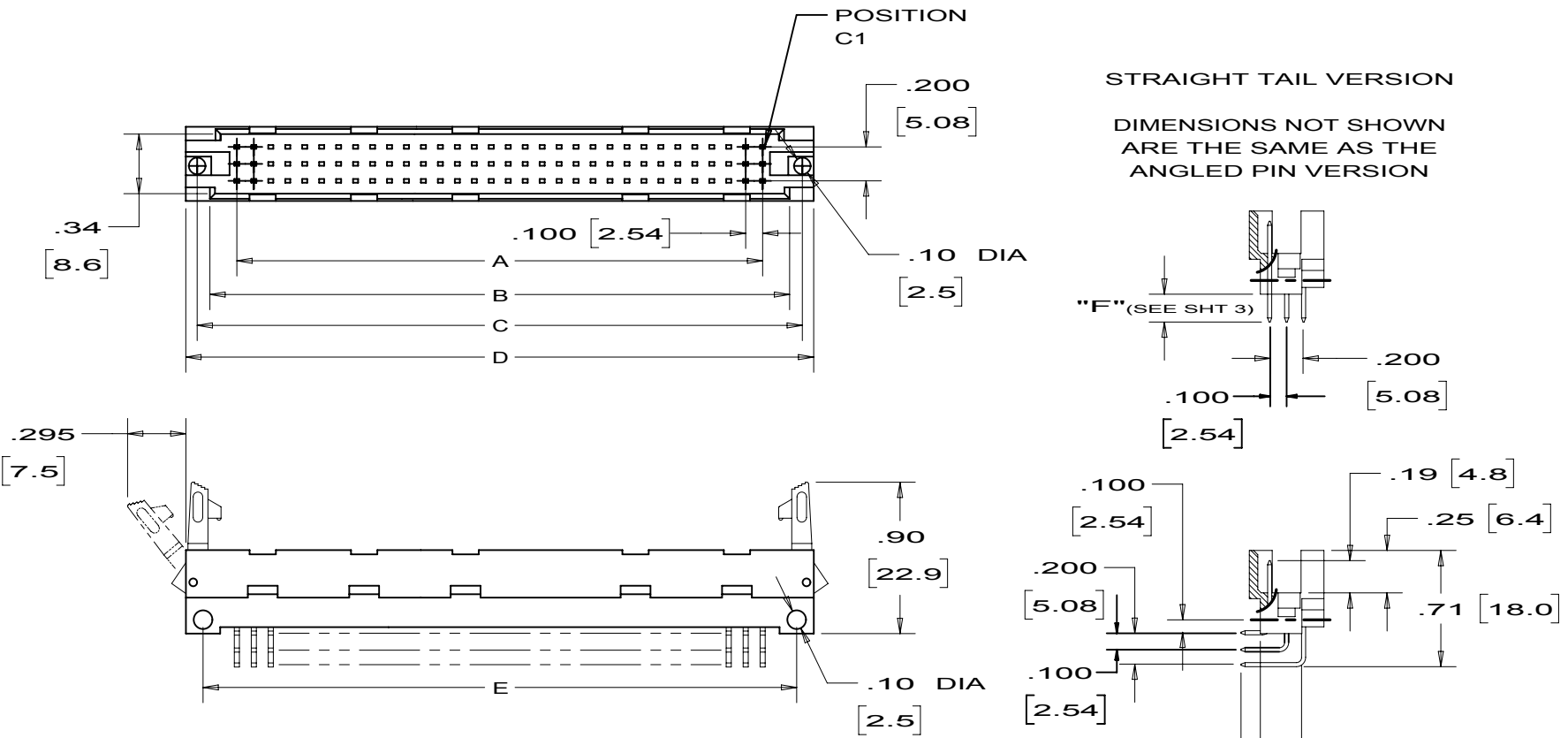


THIS COPY IS PROVIDED ON A RESTRICTED BASIS AND IS NOT TO BE USED IN ANY WAY DETRIMENTAL TO THE INTERESTS OF PANCON.



STRAIGHT TAIL VERSION

DIMENSIONS NOT SHOWN ARE THE SAME AS THE ANGLED PIN VERSION

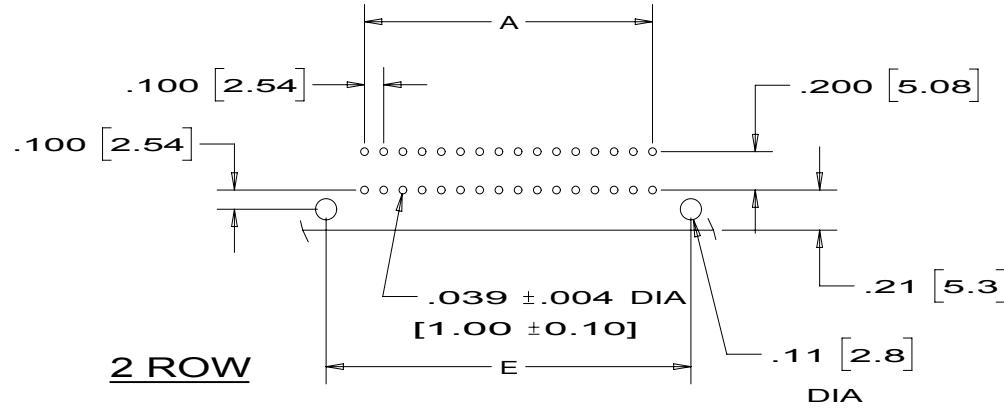


		Bolingbrook, Illinois	
HI-CON 120 SERIES TYPE C AND 1/2 C MALE CONNECTOR			
UNLESS OTHERWISE SPECIFIED, DIMENSIONAL TOLERANCES ARE: (.X) ± (.XXX) ± .01(.25) (.XX) ± .02(ANGLES ±		UNLESS OTHERWISE SPECIFIED, ALL DIMENSIONS ARE GIVEN IN INCHES. THIRD ANGLE PROJECTION. SCALE 1 : 1	
DRAWN BY WJH	MAT'L SEE NOTES	DATE 1-3-90	DRAWING NO. KA-10390
REV DATE	BY KI	CHK JAT	DWG. A SHT 1 OF 3 SIZE
7	Added RoHS Compliant	2162	CN - R CUST SUP

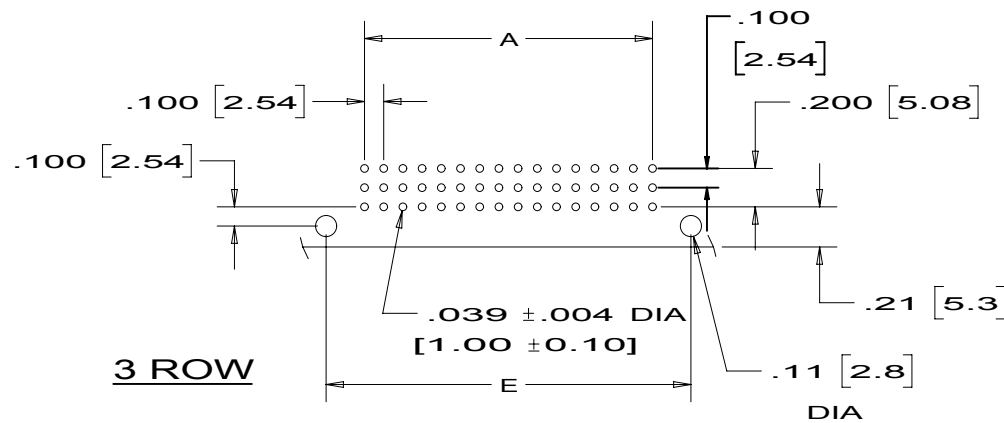
THIS COPY IS PROVIDED ON A RESTRICTED BASIS AND IS NOT TO BE USED IN ANY WAY DETRIMENTAL TO THE INTERESTS OF PANCON.

ANGLE TAIL VERSION

PCB LAYOUTS



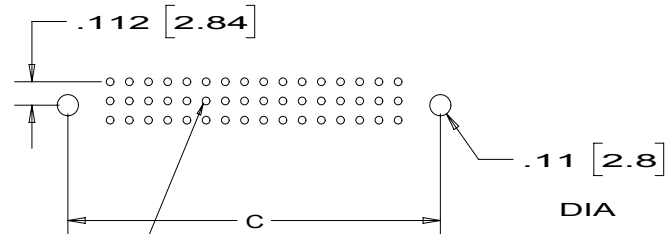
2 ROW



3 ROW

STRAIGHT TAIL VERSION

DIMENSIONS NOT SHOWN ARE THE SAME AS THE ANGLED PIN VERSION



FOR 2 ROW PART REMOVE CENTER ROW OF HOLES



7		KI		See Sh. 1		2162								
REV	DATE	BY	CHK	DESCRIPTION	CN - R	CUST	SUP							

PANCON
CONNECTORS
www.pancon.de / GERMANY
www.panconconnectors.com / USA

Bolingbrook, Illinois

**HI-CON™ 120 SERIES
TYPE C AND 1/2 C MALE CONNECTOR**

UNLESS OTHERWISE SPECIFIED,
DIMENSIONAL TOLERANCES ARE:
(.X) ± (XXX) ± .01(.25)
(.XX) ± .02 (ANGLES ±

UNLESS OTHERWISE SPECIFIED, ALL DIMENSIONS ARE GIVEN IN INCHES.
THIRD ANGLE PROJECTION.
SCALE

1 : 1

DRAWN BY
WJH
DATE
1-3-90
CHK'D
JAT

MAT'L
SEE NOTES

DRAWING NO.
KA-10390
SHT 2 OF 3
DWG. **A**
SIZE

THIS COPY IS PROVIDED ON A RESTRICTED BASIS AND IS NOT TO BE USED IN ANY WAY DETRIMENTAL TO THE INTERESTS OF PANCON.

INSULATOR TYPE	NUMBER OF CONTACTS	ROWS EQUIPPED	POSITIONS EQUIPPED	DIM A	DIM B	DIM C	DIM D	DIM E
HALF C	32	A & C	ALL	1.500 (38.1)	1.76 (44.6)	1.97 (50.0)	2.13 (54.0)	1.90 (48.26)
C	64	A & C	ALL	3.100 (78.74)	3.35 (85.2)	3.54 (90.0)	3.70 (94.0)	3.50 (88.9)

PART NUMBERS

TAIL	WITHOUT EJECTOR LATCH			WITH EJECTOR LATCH		
	ANGLED	STRAIGHT	STRAIGHT	ANGLED	STRAIGHT	STRAIGHT
"F" DIM	.114 (2.90)	.126 (3.20)	.512 (13.0)	.114 (2.90)	.126 (3.20)	.512 (13.0)
1/2 C	120-332-0*3	120-332-1*3	120-332-1*1	120-332-0*3A	120-332-1*3A	120-332-1*1A
FULL C	120-964-0*3			120-964-0*3A	120-964-1*3A	120-964-1*1A
FULL C				120-096-0*3A		

NOTES:

- CONTACT MATERIAL: BRASS ALLOY, GOLD OVER NICKEL PLATING IN MATING AREA, TIN-LEAD OVER NICKEL PLATING ON TAIL.
- HOUSING MATERIAL: GLASS FILLED POLYESTER, U.L. 94V-0.
- ALL DIMENSIONS ARE GIVEN IN INCHES AND [MILLIMETERS].

* = PLATING CODE
 3 = 30 μ GOLD
 5 = 15 μ GOLD



								 PANCON CONNECTORS www.pancon.de / GERMANY www.panconconnectors.com / USA		Bolingbrook, Illinois	
								HI-CON™ 120 SERIES TYPE C AND 1/2 C MALE CONNECTOR			
								UNLESS OTHERWISE SPECIFIED, DIMENSIONAL TOLERANCES ARE: (.X) ± (.XXX) ± .01(.25) (.XX) ± .02 (ANGLES ±		UNLESS OTHERWISE SPECIFIED, ALL DIMENSIONS ARE GIVEN IN INCHES. THIRD ANGLE PROJECTION. SCALE 1 : 1	
								DRAWN BY WJH		SEE NOTES	
								DATE 1-3-90			
								CHK'D JAT		DRAWING NO. KA-10390	
REV	DATE	BY	CHK	DESCRIPTION			CN - R	CUST	SUP	SHT 3 OF 3	
7		KI		See Sh. 1			2162			DWG. SIZE A	