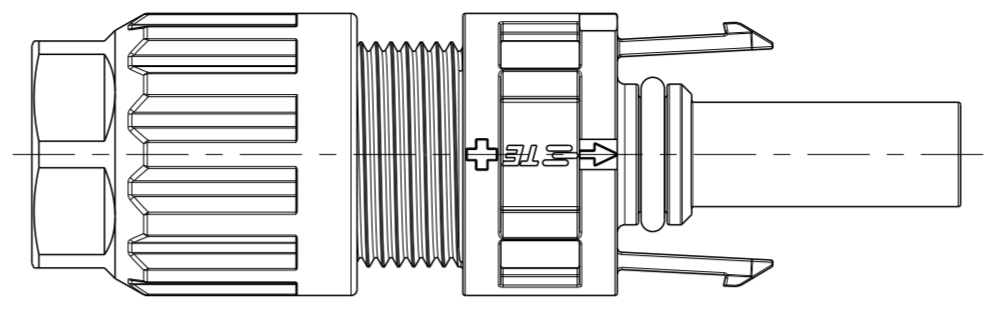


LOC	DIST	REVISIONS					
		P	LTR	DESCRIPTION	DATE	DWN	APVD
-	-	A4		ECR-14-000108	10JAN2014	LW	PY
		A5		ECR-14-000266	18MAR2014	LW	PY
		A6		NOTE No.4 IS ADDED	17APR2014	KR	TD
		A7		BOM AND EXPLODED VIEW ARE ADDED	30MAY2014	KR	TD

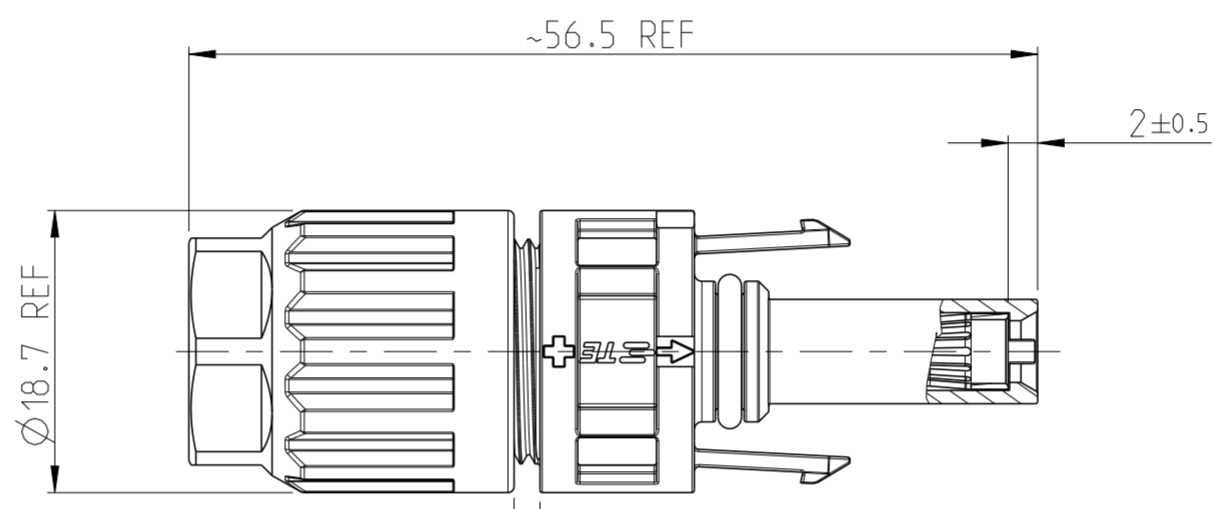
1 SPECIFICATION

CABLE CONDUCTOR SIZE	4.0MM2/AWG12	6.0MM2/AWG10
RATED CURRENT (AT 85°C AMBIENT)	UL 20A DC TUV 35A DC	UL 30A DC TUV 40A DC
RATED VOLTAGE	1000V DC / TUV 1000V DC	
DEGREE OF PROTECTION, MATED	IP 68 (1m, 24h)	
AMBIENT TEMPERATURE RANGE	-40°C ~ +85°C	
OVERVOLTAGE CATEGORY	III	
POLLUTION DEGREE	2	
CONTACT RESISTANCE	0.5mΩ	
CONTACT MATERIAL	COPPER, TIN PLATED	
INSULATION MATERIAL	THERMOPLASTIC, UL94-V0	
SAFETY CLASS	II	
STRIP LENGTH	6.5mm	
CABLE JACKET DIAMETER	5.5~7.8mm	

- 2 CONTACT SHOWN UNINSTALLED, FOR REFERENCE ONLY
- 3 USE ONLY CRIMP TOOL OF TE CONNECTIVITY TO CRIMP CONTACT. CRIMP TOOL P/N 4-1579002-2
- 4 THE CABLE SCREW JOINT TORQUE GAP SHOULD BE 1.25mm±0.35 AFTER THE FINAL ASSEMBLY, FOR THE CONNECTOR WITH CABLE OUTER DIA. 6.35mm PN 1983821-1 AND CABLE OUTER DIA. 6.40mm PN 1983530-1.

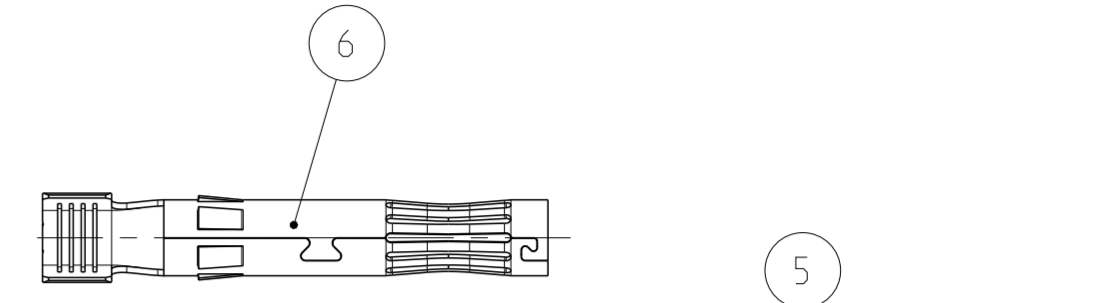


PREASSEMBLED VIEW AS SHOWN

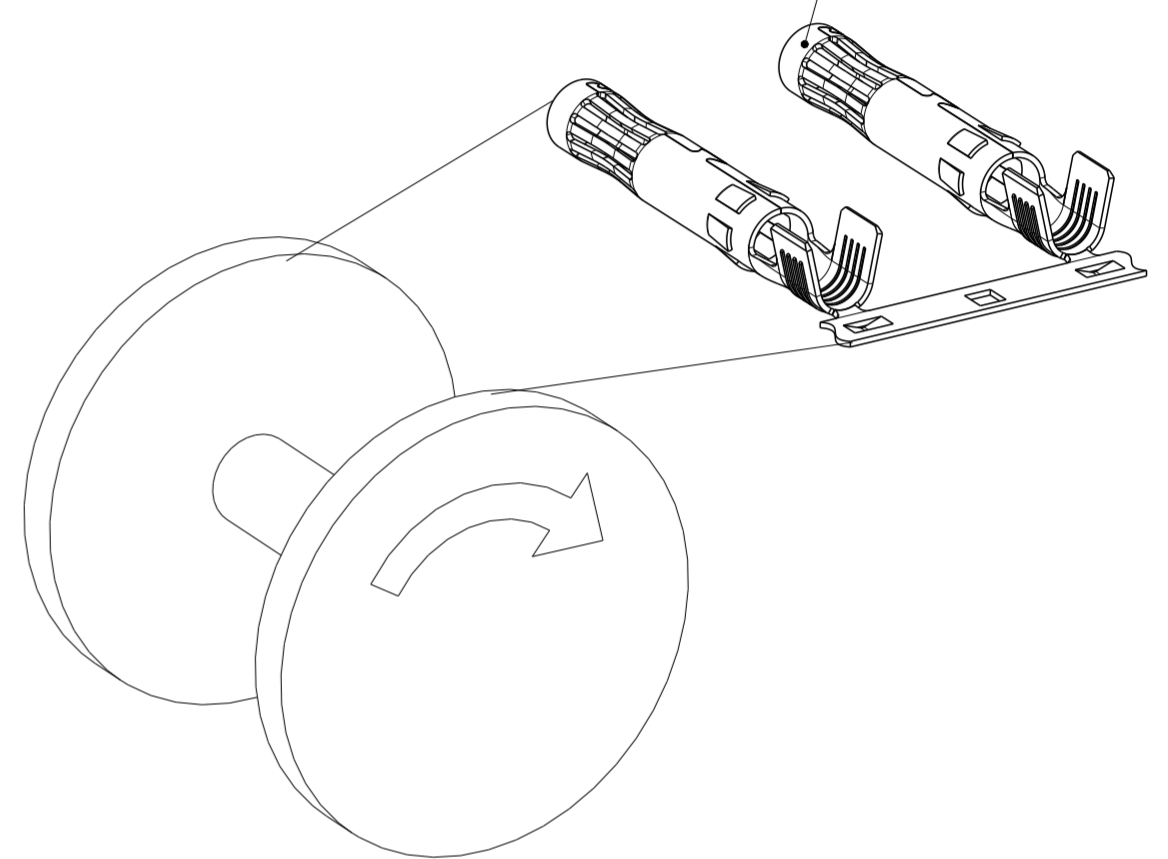


4 TORQUE GAP

ASSEMBLED VIEW AS SHOWN AND VIEW SHOWS THE TORQUE GAP FOR REFERENCE ONLY

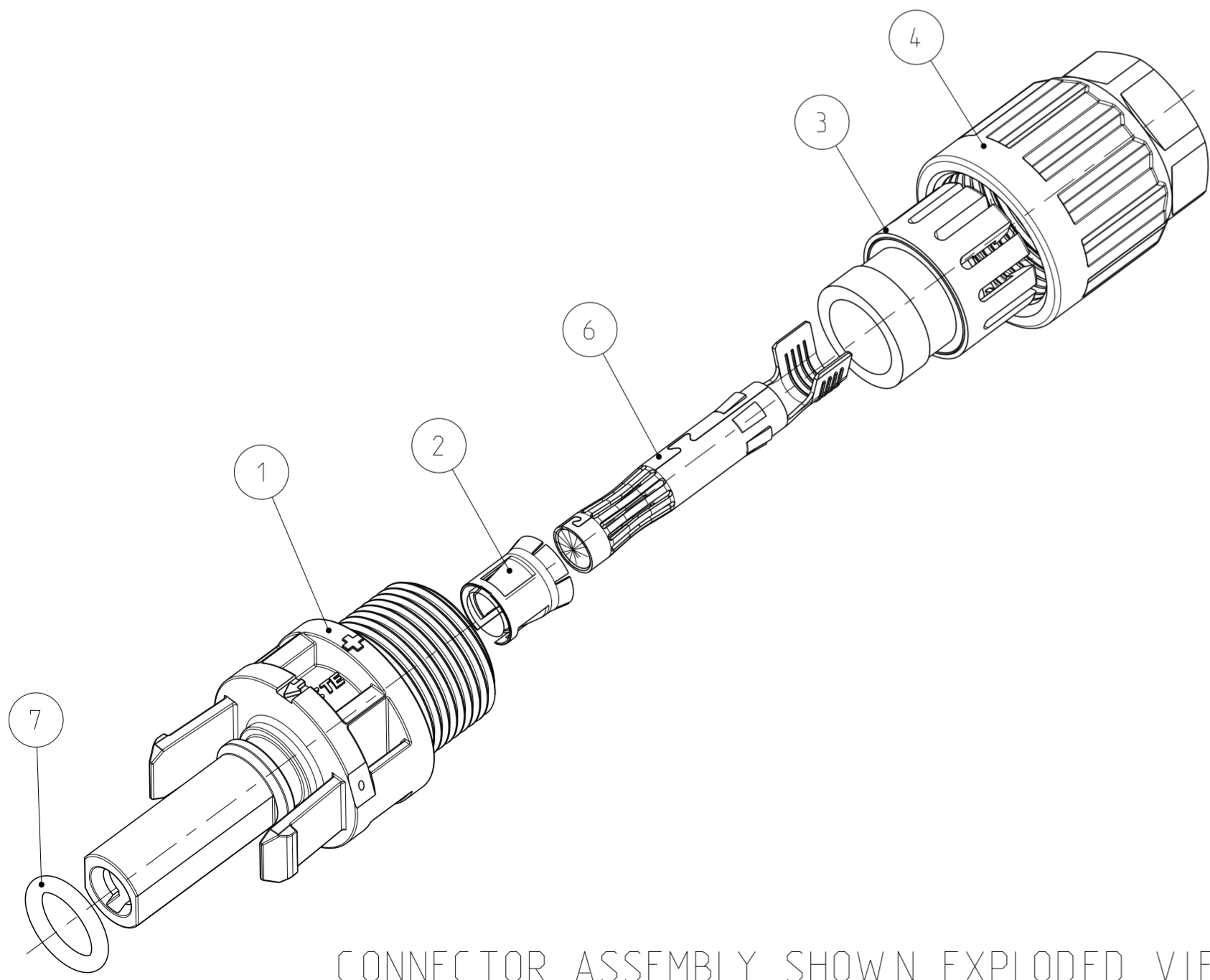


SOCKET CONTACT (LOOSE PIECE)



STRIP CONTACT COME OFF TO ASSEMBLY
2000 PCS CONTACTS MOUNTED REEL
REEL TYPE SUBJECT TO ALTERNATION

-1 AS SHOWN



CONNECTOR ASSEMBLY SHOWN EXPLODED VIEW FOR REFERENCE ONLY

QUANTITY PER ASSEMBLY										DESCRIPTION	ITEM No
4- -2	4- -1	3- -2	3- -1	2- -2	2- -1	1- -2	1- -1	-2	-1	PART NUMBER	
1	10	100	2000	1000	PACKAGING QTY.						
5.5~6.0	6.0~7.8	5.5~6.0	6.0~7.8	5.5~6.0	6.0~7.8	5.5~6.0	6.0~7.8	5.5~6.0	6.0~7.8	CABLE JACKET DIAMETER in mm	
1	1	1	1	1	1	1	1	1	1	O-RING, 7.1X1.55 (RED)	7
1	1	1	1	1	1	-	-	1	1	SOCKET CONTACT, 4~6mm ² /10~12AWG, LOOSE PIECE	6
-	-	-	-	-	-	1	1	-	-	SOCKET CONTACT, 4~6mm ² /10~12AWG, STRIP	5
1	1	1	1	1	1	1	1	1	1	CABLE SCREW JOINT	4
1	1	1	1	1	1	1	1	1	1	PINCH RING SEAL INMOLDED, ASSY	3
1	1	1	1	1	1	1	1	1	1	METAL CLIP	2
1	1	1	1	1	1	1	1	1	1	PV4 SOCKET CONNECTOR, PLUS CODED	1

THIS DRAWING IS A CONTROLLED DOCUMENT.

DIMENSIONS: mm	TOLERANCES UNLESS OTHERWISE SPECIFIED:	DWN CHRIS WANG 08MAR2012	 TE Connectivity
	0 PLC ±	CHK ROJAY CHEN 08MAR2012	
	1 PLC ±	APVD PETER YIN 08MAR2012	
	2 PLC ±	PRODUCT SPEC 108-106078	
MATERIAL	FINISH	APPLICATION SPEC 114-106078	NAME SOCKET CONNECTOR KITS (FEMALE) (PV4-B*) SOLARLOK PV4 CONNECTOR
		WEIGHT -	SIZE A2
		Customer Drawing	CAGE CODE 00779
			DRAWING NO C-1971862
			RESTRICTED TO -
			SCALE 2:1
			SHEET 1 OF 1
			REV A7