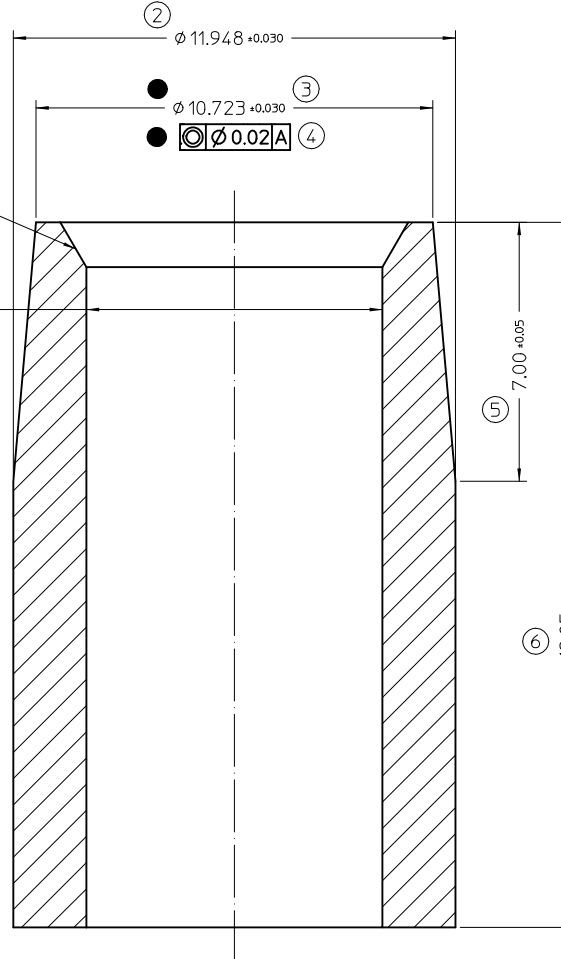
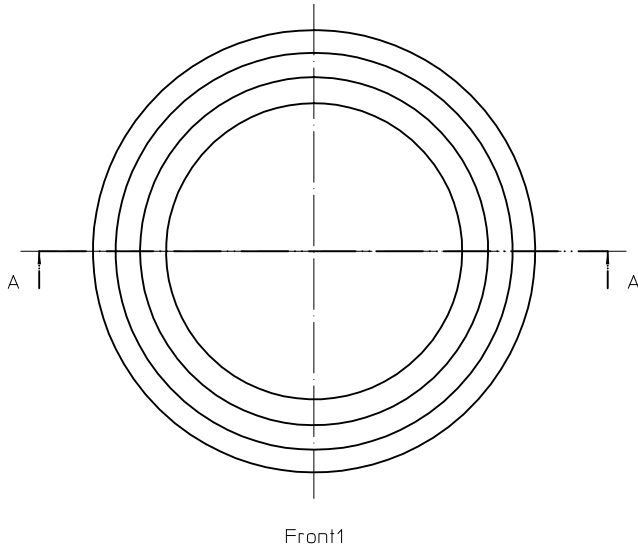


AVAGO TECHNOLOGIES CONFIDENTIAL
 THIS DOCUMENT AND ANY ASSOCIATED DATA CONTAIN CONFIDENTIAL INFORMATION THAT IS AVAGO TECHNOLOGIES PROPERTY. ONLY DISCLOSE OR DUPLICATE FOR OTHERS AS AUTHORIZED BY AVAGO TECHNOLOGIES.

FILE NAME 5023-0590-P1_001.ami		REVISION 001	STORE DATE 2012-11-20	DOCUMENT NUMBER 5023-0590-P1	
SYM 001	REVISIONS As issued.			REVISED BY Cheang CK	DATE 2012-11-20

C'sink to diameter "ID" +1.50mm
 60 deg included angle

① ID
 A



Section A-A

NOTES:

- Part shall be degreased and free of corrosion.
- External shipping container shall show:
 - A. Manufacturer
 - B. Invoice Number
 - C. Quantity Shipped
 - D. AVAGO Part Number
 - E. AVAGO P.O. Number
 - F. Date of shipment
- Individual packets, if any, shall be marked with AVAGO Part Number and Quantity.
- No more than 1000 units per individual packet. Max lot size 5000 units.
- Critical features are indicated by a darkened circle. ●
- No burrs permitted.
- ID shall measure with 'go no go' jig.

PART NUMBER	SHAFT SIZE	INTERNAL DIA DIMENSIONS (mm)	REMARK
5023-0596	3 mm	3.003 / 3.013	
5023-0595	3.175 mm	3.178 / 3.188	
5023-0594	4 mm	4.003 / 4.013	
5023-0593	5 mm	5.004 / 5.014	
5023-0592	6 mm	6.004 / 6.014	
5023-0591	6.35 mm	6.354 / 6.364	
5023-0590	8 mm	8.005 / 8.015	

1	-	Brass	-	-	-
ITEM	QTY.	PART/MATERIAL-DESCRIPTION	MATL-PART NO.	MATL-DWG NO.	MATL-SPEC.
Cheang CK		2012-02-28	AOR-3H-30		
DRAWN BY		DATE YYYY-MM-DD	Alignment Sleeve		
Yap Kek Leong		2012-02-28	PART NUMBER 5023-0590		
ENGINEER/CHECKER		DATE	5023-0590-P1		
UNLESS OTHERWISE SPECIFIED					
* DIMENSIONS ARE IN MILLIMETERS					
* THIRD ANGLE PROJECTION					
* ADHERENCE TO DWG A-5951-1561-1 (COMPANY STD. SECTION 608) AND GSE 5972-2861-85 IS REQUIRED					
DO NOT SCALE THIS DRAWING		G&T SYMBOLRY PER ASME Y14.5M-1994		TITLE	
METRIC		SCALE		1 OF 1 SHEET	
		10:1		C SIZE	
		SCALE		DOCUMENT NUMBER	

