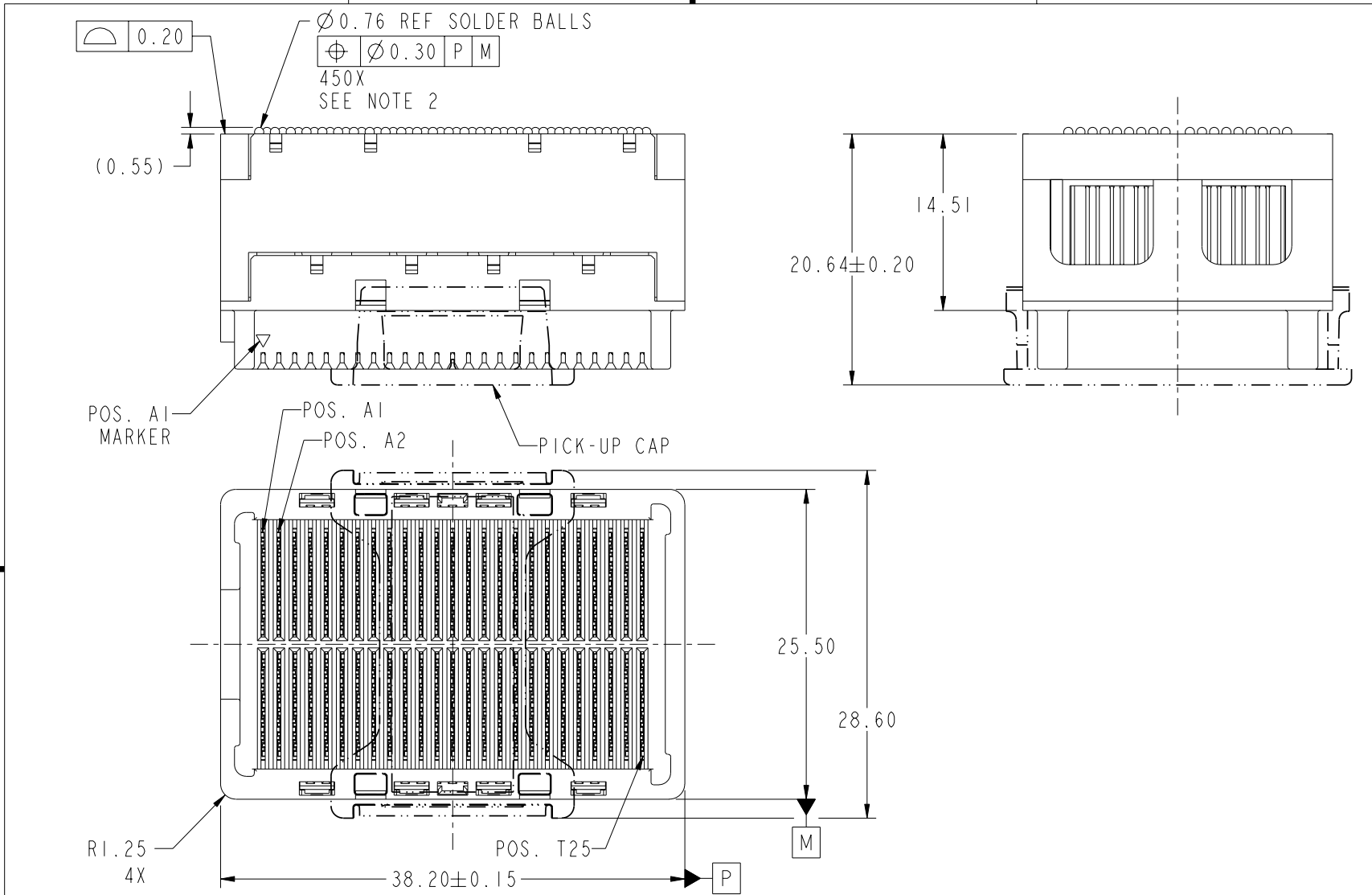




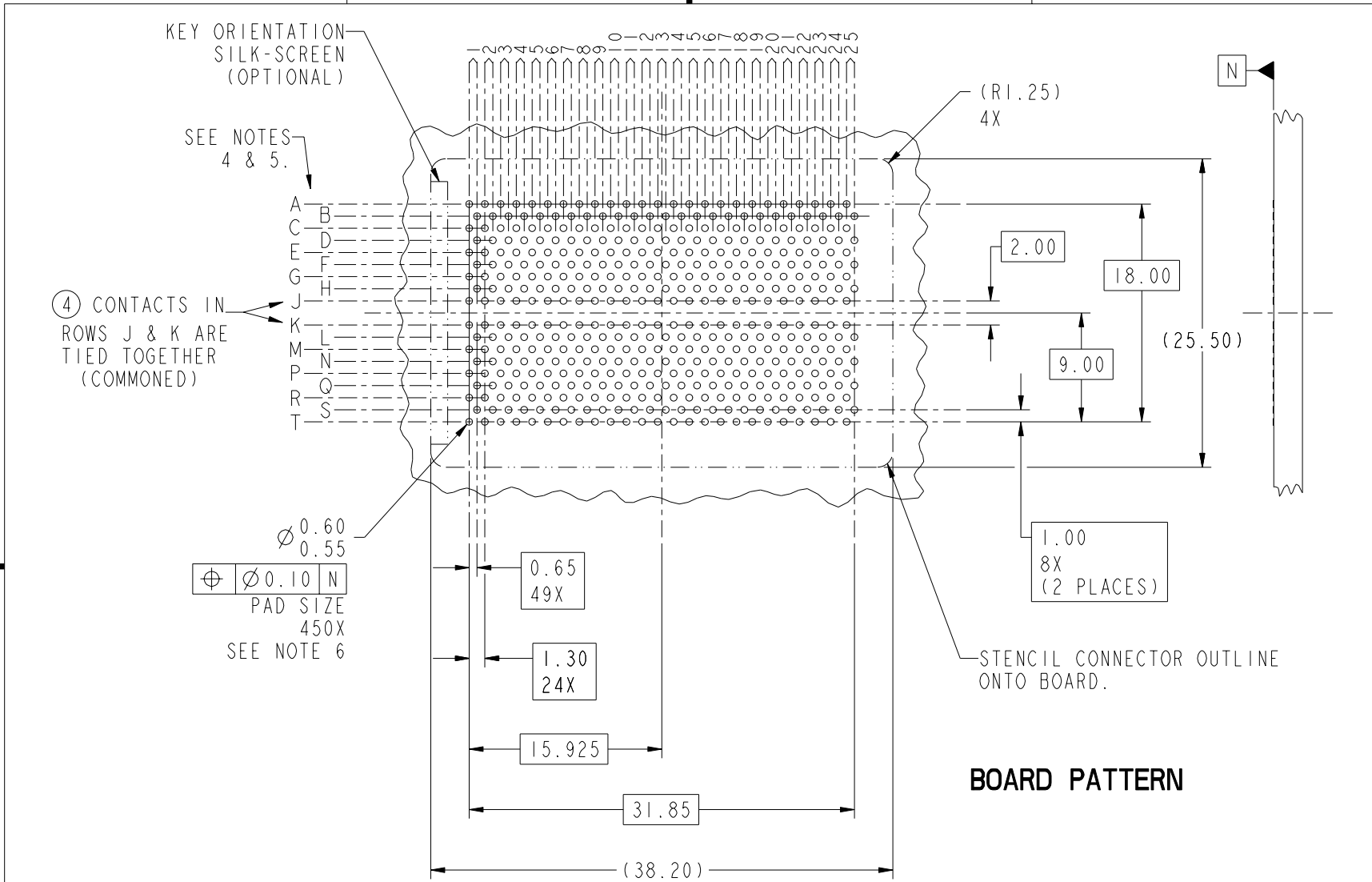
This document is the property of and embodies CONFIDENTIAL and PROPRIETARY information of FCI. No part of the information shown on this document may be used in any way or disclosed to others without the written consent of FCI. Copyright FCI.



mat'l code				SEE NOTE 1				tolerances unless otherwise specified				CUSTOMER		FCI	
ltr	ecn no.	dr	date	linear	$0.X \pm 0.3$			COPY		projection		title		www.fciconnect.com	
A	V06-0240	DAI	2006-03-13		$0.XX \pm 0.10$					MM		GIG-Array			
B	V06-0435	LP	2006-05-08	angles	$0.XXX \pm 0.050$					2:1		15mm RECP. ASSY. 200 SIG. POS.			
C	V06-0558	LP	2006-06-21	dr	$0^\circ \pm 2^\circ$							product family		code	
D	V07-0469	LP	2007-07-13	engr	R. JOHNSON	2002-09-16					GIG-Array		213		
E	V08-0489	SM	2008-11-19	chr	D. JOHNESCU	2002-09-16					size		sheet		
				appd	D. JOHNESCU	2002-09-16					55741		1 of 4		
sheet index		revision sheet		E 1	E 2	E 3	E 4					cage code		4	



This document is the property of and embodies
 CONFIDENTIAL and PROPRIETARY information of FCI.
 No part of the information shown on this
 document may be used in any way or disclosed
 to others without the written consent of FCI.
 Copyright FCI.



mat'l code				SEE NOTE 1		tolerances unless otherwise specified		CUSTOMER		www.fciconnect.com	
ltr	ecn no.	dr	date	linear	0.X ± 0.3		COPY		title		
E					0.XX ± 0.10		projection				
					0.XXX ± 0.050				GIG-Array 15mm RECP. ASSY. 200 SIG. POS.		
				angles	0° ± 2°				product family		code
				dr	R. JOHNSON	2002-09-16	MM		GIG-Array		213
				engr	D. JOHNESCU	2002-09-16	← MM →		size		sheet
				chr	D. JOHNESCU	2002-09-16	scale		55741		2
				appd	D. JOHNESCU	2002-09-16	2:1		A		
sheet index		revision sheet									

A

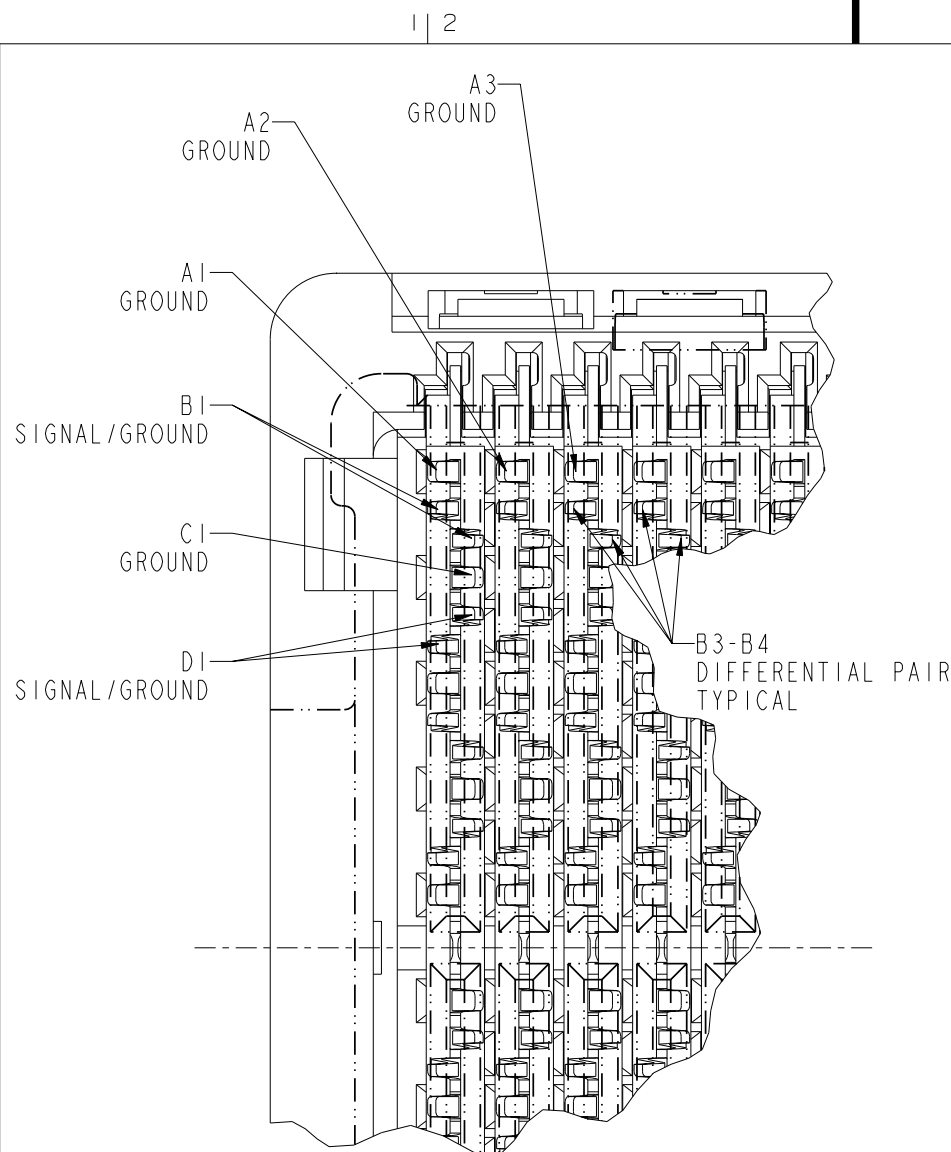
A

B

B



This document is the property of and embodies
 CONFIDENTIAL and PROPRIETARY information of FCI.
 No part of the information shown on this
 document may be used in any way or disclosed
 to others without the written consent of FCI.
 Copyright FCI.



RECEPTACLE INTERFACE DESCRIPTION

NOTES:

- ①. MATERIAL:
 HOUSING: LCP
 CONTACT: COPPER ALLOY
 PLATING (CONTACT): Au OVER Ni.
 UL RATING: 94 V-0
 SOLDER BALL: (SEE TABLE) EUTECTIC
 SnPb OR LEAD FREE 95.5 Sn/4Ag/0.5Cu.
- ②. SOLDER BALLS WILL NOT BE PERFECT
 SPHERICAL SHAPE DUE TO REFLOW ATTACHMENT.
- ③. MATED HEIGHT EFFECTED BY CUSTOMERS'
 PCB PAD SIZE, PLATING, SOLDER REFLOW
 PROFILE & SOLDER PASTE.
- ④. CONTACTS IN ROWS A,C,E,G,J,K,M,P,R AND T
 ARE SINGLE BEAM CONTACTS,
 USED AS GROUND PINS.
 (NOTE: CONTACTS IN ROWS J & K ARE
 TIED TOGETHER [COMMONED])
- ⑤. CONTACTS IN ROWS B,D,F,H,L,N,Q AND S
 ARE DUAL BEAM CONTACTS,
 TYPICALLY USED AS SIGNAL PINS.

mat'l code		SEE NOTE 1		tolerances unless otherwise specified		CUSTOMER		www.fciconnect.com	
ltr	ecn no.	dr	date	linear	0.X ±0.3	COPY		title	
E					0.XX ±0.10	projection		GIG-Array 15mm RECP. ASSY. 200 SIG. POS.	
				angles	0° ±2°			product family	
		dr	R. JOHNSON	2002-09-16		MM		GIG-Array	
		engr	D. JOHNESCU	2002-09-16				code	
		chr	D. JOHNESCU	2002-09-16		7:1		213	
		appd	D. JOHNESCU	2002-09-16		A		sheet	
sheet index		revision sheet						3	



title **GIG-Array**
15mm RECP. ASSY. 200 SIG. POS.
 product family GIG-Array code 213
 size dwg no **55741** sheet 3

cage code **22526**

Pro/E

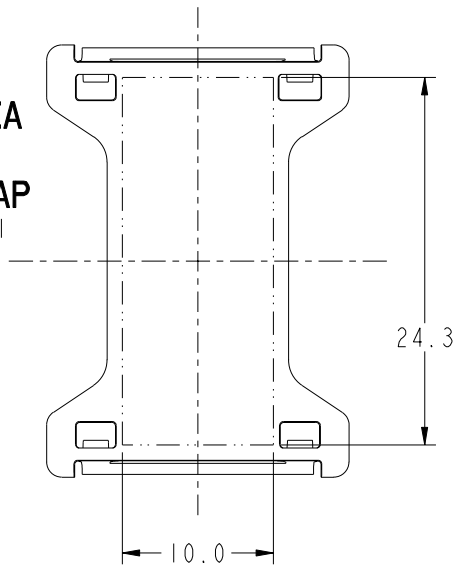
PDM: Rev:E

STATUS: **Released**

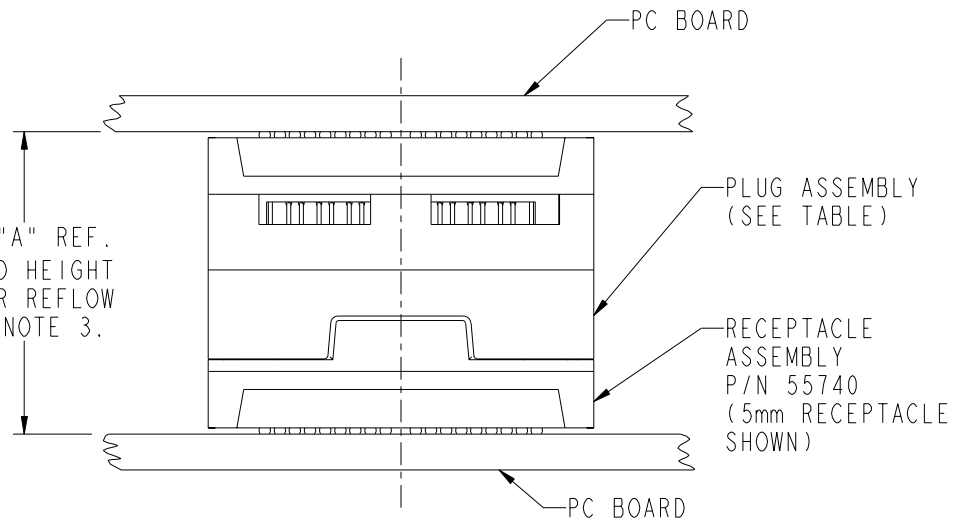
Printed: Sep 15, 2009

PRODUCT NUMBER	SOLDER BALL
55741-001	SnPb
55741-001LF	SnAgCu LEAD FREE ⑦⑧

FLAT AREA
FOR
PICK-UP CAP
SCALE 2:1



DIM "A" REF.
MATED HEIGHT
AFTER REFLOW
SEE NOTE 3.



END VIEW OF MATED CONNECTORS

SCALE 2:1

DIM. "A"	PLUG ASSEMBLY P/N
25	55737
27	10026802
28	10055142
30	55738
35	55739
40	10054783

NOTES:

- SPECIFIED POSITIONAL TOLERANCE DEFINES PAD TO PAD LOCATION WITHIN LAND PATTERN. POSITIONAL TOLERANCE OF LAND PATTERN TO FUDICIAL MARKS OR PCB DATUMS SHALL BE DEFINED BY CUSTOMER. FOR RECOMMENDED PRODUCT APPLICATION AND PCB DESIGN DETAILS, SEE DOC. NO. GS-20-016.
- FOR PROPER APPLICATION FOLLOW FCI APPLICATION SPECIFICATION GS-20-033. LEAD FREE SOLDER BALLS WILL NOT SOLDER PROPERLY IN A LEADED SOLDER PROCESS DUE TO A HIGHER REFLOW TEMPERATURE. LEADFREE PRODUCT IS THEREFORE NOT BACKWARDS COMPATIBLE WITH LEADED OR SOME SOLDERING APPLICATIONS. REFERENCE FCI APPLICATION SPECIFICATION.
- THIS PRODUCT MEETS THE EUROPEAN UNION DIRECTIVES AND OTHER COUNTRY REGULATIONS AS DESCRIBED IN GS-22-008. PRODUCT MEETING THIS DIRECTIVE IS IDENTIFIED IN THE CODE NUMBER MARKED ON EACH PART BY HAVING AN "X" IN THE SEVENTH CHARACTER POSITION.

mat'l code				SEE NOTE 1		tolerances unless otherwise specified		CUSTOMER		FCI www.fciconnect.com	
ltr	ecr no.	dr	date	linear	0.X ±0.3	projection	COPY		title		
E					0.XX ±0.10				GIG-Array		
				angles	0° ±2°				15mm RECP. ASSY. 200 SIG. POS.		
				dr	R. JOHNSON 2002-09-16	MM			product family		code
				enr	D. HARPER 2002-09-16				GIG-Array		213
				chr	D. JOHNESCU 2002-09-16	scale			size		sheet
				appd	D. JOHNESCU 2002-09-16	2:1			dwg no		4
sheet index		revision sheet								A	
										B	



This document is the property of and embodies CONFIDENTIAL and PROPRIETARY information of FCI. No part of the information shown on this document may be used in any way or disclosed to others without the written consent of FCI. Copyright FCI.