



Copyright FCJ

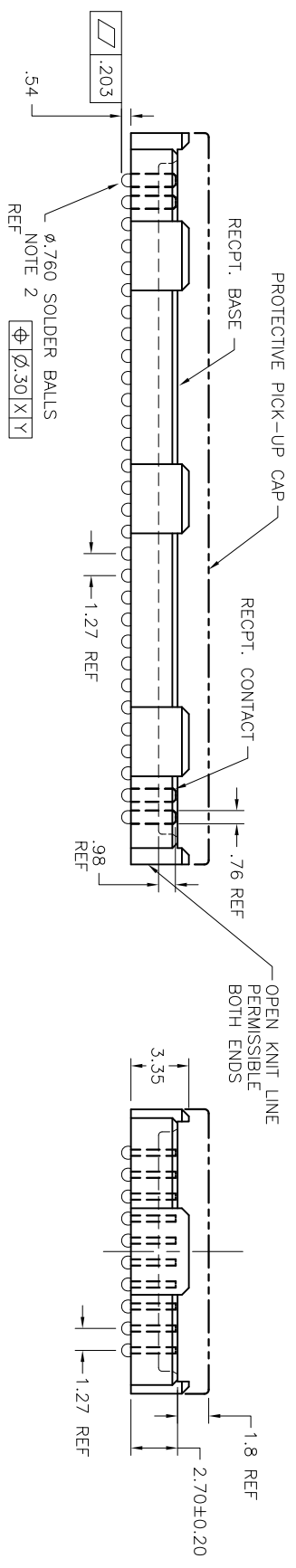
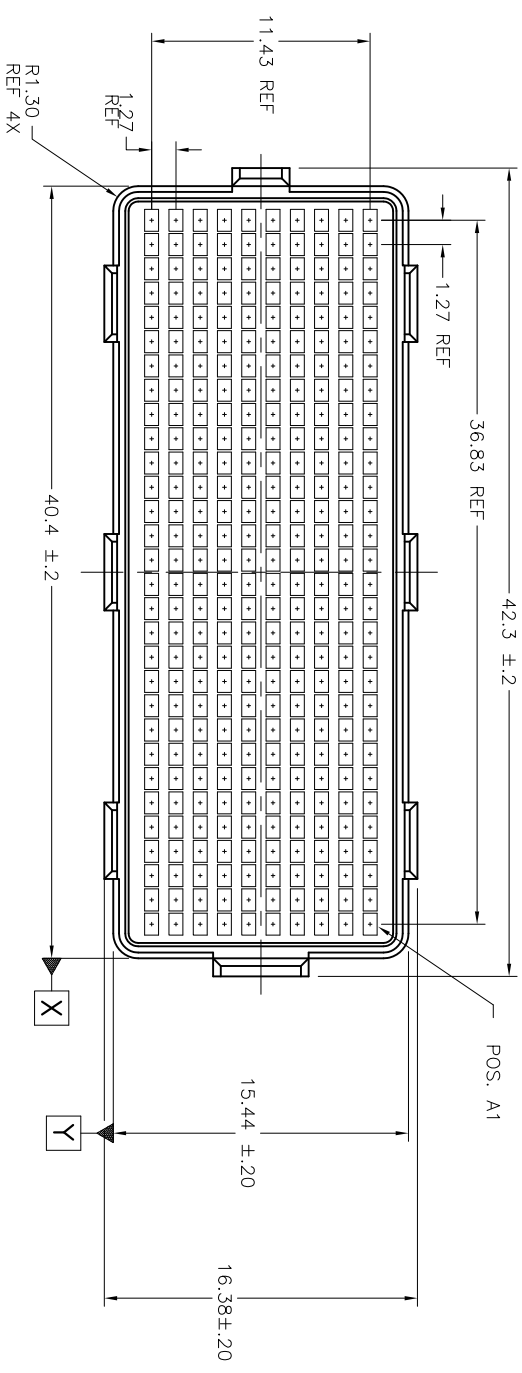


FCJconnect.com



PRODUCT NUMBER
SEE TABLE

1 | 2 | 3 | 4



mat'l code	SEE NOTE 1	surface	tolerance	projection	product family
lfr	ecm no.	dfr	date	ASME Y14.5	MEG-ARRAY
K	Y06-0560	LP	2006-07-8	angles	4mm RECEPTACLE ASSEMBLY
L	Y11-0028	HTB	2011-06-02	ASME Y14.5	10 X 30 = 300 POS.
M	Y-012333	RE	2002-07-30	XXX.X	Scale: 3:1
N	Y-13453	DCH	2012-11-14	XXX.X	FCJ
P	Y-13453	DCH	2012-02-06	XXX.X	dwg no
R	V-18087	DCH	2014-02-25	XXX.X	84501
Sheet	revision	R	R	R	sheet 1 of 4
index	Sheet	1	2	3	size
					A4

form: ArrmXLIC 1 | 2 | 3 | 4



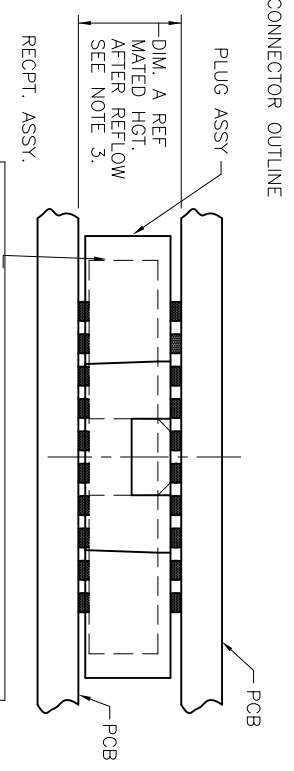
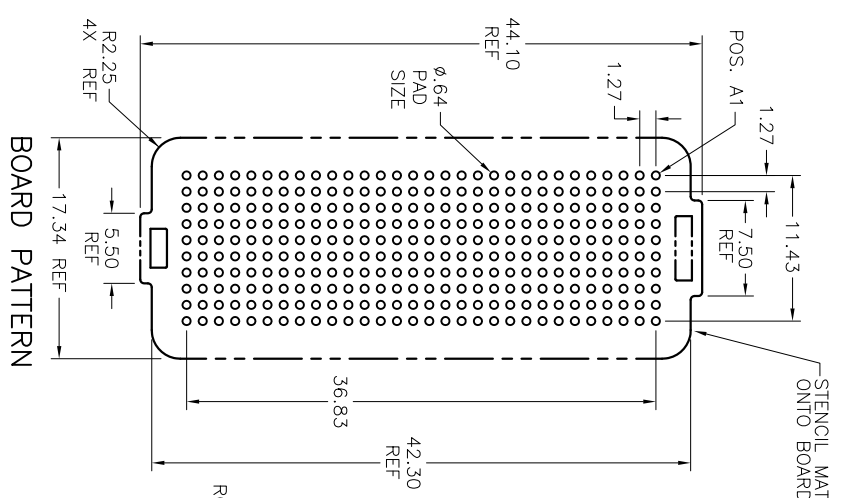
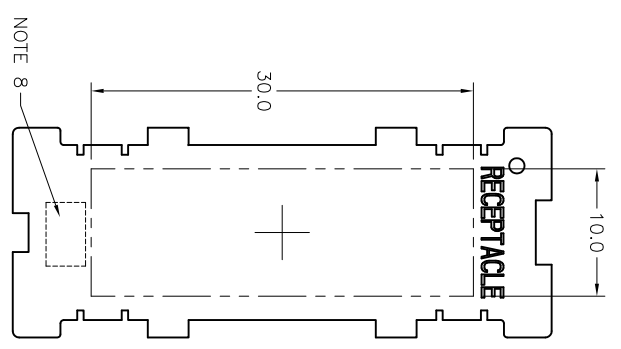
Copyright FCJ



FCJconnect.com



PRODUCT NUMBER
SEE TABLE

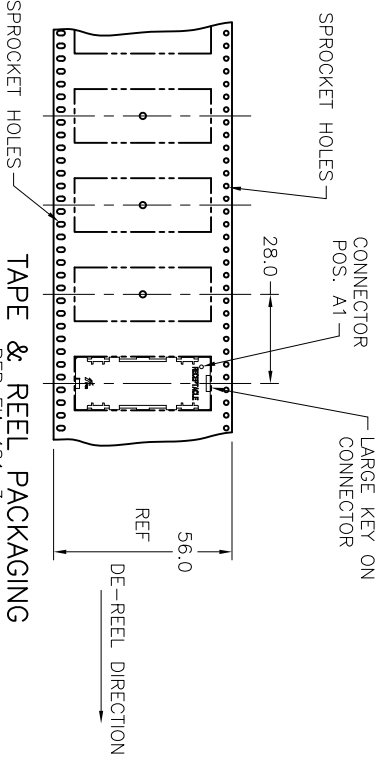


MATED HEIGHT TABLE

DIM. A	PLUG ASSY. P/N	RECEPT. ASSY. P/N
4.0	84500	84501
10.0	84578	84501

MATED HEIGHT AFTER REFLOW IS BASED ON ϕ .64mm PAD (METAL-DEFINED) AND .13mm SOLDER PASTE STENCIL THICKNESS. SEE NOTE 3.

END VIEW - MATED CONNECTORS SCALE NONE



TAPE & REEL PACKAGING

PER EIA 481-3
SCALE NONE

mat'l code	SEE NOTE 1	surface	tolerance	projection	product family
litr	ecm no	date	ASME Y14.5	ASME Y14.5	MEG-ARRAY
R	angles	3x3	XXX.13	MM	4mm RECEPTACLE ASSEMBLY
	DR	D. WAUGHEN	1998-12-6	Scale: 2:1	10 X 30 = 300 POS.
	DR	D. HARPER	1998-12-6		Sheet 2 of 4
	DR	D. HARPER	1998-12-6		Size A4
	DR	D. HARPER	1998-12-6		CUSTOMER Drawing
Sheet Index	revision				

1 2

3 1

4

A

A

B

B

Form: ArrayMLC

1

2



3

4

PRODUCT NUMBER	PICK-UP CAP (NATURAL OR BLACK IN COLOR)	CONTACT PLATING AND THICKNESS	SOLDER BALL	NOTES
84501-001	YES	15µ" (.38µm) Au	SnPb	
84501-001LF	YES	15µ" (.38µm) Au	LEAD FREE	6
84501-091	YES	15µ" (.38µm) GXT	SnPb	
84501-091LF	YES	15µ" (.38µm) GXT	LEAD FREE	6
84501-093LF	YES	15µ" (.38µm) GXT	LEAD FREE	6, 11
84501-101	YES	30µ" (.76µm) Au	SnPb	
84501-101LF	YES	30µ" (.76µm) Au	LEAD FREE	6
84501-191	YES	30µ" (.76µm) GXT	SnPb	
84501-191LF	YES	30µ" (.76µm) GXT	LEAD FREE	6
84501-201	YES	50µ" (1.27µm) Au SPECIAL	SnPb	4
84501-201LF	YES	50µ" (1.27µm) Au SPECIAL	LEAD FREE	4 AND 6
84501-291	YES	50µ" (1.27µm) GXT SPECIAL	SnPb	4
84501-291LF	YES	50µ" (1.27µm) GXT SPECIAL	LEAD FREE	4 AND 6
84501-A01	YES	30µ" (.76µm) Au SPECIAL	SnPb	7
84501-A01LF	YES	30µ" (.76µm) Au SPECIAL	LEAD FREE	6 & 7
84501-301	YES	15µ" (.38µm) Au SPECIAL	SnPb	7
84501-301LF	YES	15µ" (.38µm) Au SPECIAL	LEAD FREE	6 & 7
84501-401	YES	30µ" (.76µm) Au SPECIAL	SnPb	7
84501-401LF	YES	30µ" (.76µm) Au SPECIAL	LEAD FREE	6 & 7
84501-501	YES	Au SPECIAL	SnPb	4 & 7
84501-501LF	YES	Au SPECIAL	LEAD FREE	4, 6 & 7

mat'l code		SEE NOTE 1		surface		tolerance		projection		product family	
litr	ecn no	dfr	date	ASME Y14.5	<input checked="" type="checkbox"/>	ASME Y14.5			MEG-ARRAY		
R				angles		unless otherwise specified		MM	title		
				0° ±2°				Scale: 2:1	4mm RECEPTACLE ASSEMBLY		
									10 X 30 = 300 POS.		
				dfr		D. WAUGHEN 1998-2-6			dwg no		
				plqjr		D. HARPER 1998-2-6			84501		
				dlr		D. HARPER 1998-2-6			sheet 3 of 4		
				qddi		D. HARPER 1998-2-6			size		
sheet	revision								A4		
index	sheet								CUSTOMER Drawing		

NOTES:

- ① MATERIAL
HOUSING: LCP
CONTACT: COPPER ALLOY
PLATING
CONTACT: (SEE TABLE ON SHEET3)
SOLDER BALL: (SEE TABLE ON SHEET3)
EUTECTIC SnPb OR LEAD FREE
95.5Sn/44Ag/0.5Cu
- ② SOLDER BALLS WILL NOT BE PERFECT SPHERICAL SHAPE DUE TO REFLOW ATTACHMENT.
- ③ MATED HEIGHT EFFECTED BY CUSTOMER'S PCB PAD SIZE, PLATING, SOLDER REFLOW PROFILE, & SOLDER PASTE.
- ④ PLATING FOR -2XX SERIES PRODUCT NUMBERS MEET THE REQUIREMENTS OF GR-1217-CORE, CENTRAL OFFICE ENVIRONMENT, (25 YEAR LIFE EXPECTANCY). THE CONTACTS IN THESE PRODUCT NUMBERS ALSO HAVE SPECIAL CONTACT GEOMETRY.
- ⑤ FOR PROPER APPLICATION FOLLOW FCI APPLICATION SPECIFICATION GS-20-033 LEAD FREE SOLDER BALLS WILL NOT SOLDER PROPERLY IN A LEADED SOLDER PROCESS DUE TO A HIGHER REFLOW TEMPERATURE. LEAD FREE PRODUCT IS THEREFORE NOT BACKWARDS COMPATIBLE WITH LEADED OR SOME SOLDERING APPLICATIONS. REFERENCE FCI APPLICATION SPECIFICATION.
- ⑥ THIS PRODUCT MEETS EUROPEAN UNION DIRECTIVES AND OTHER COUNTRY REGULATIONS AS DESCRIBED IN GS-47-0004 PRODUCT MEETING THIS DIRECTIVE IS IDENTIFIED IN THE LOT CODE NUMBER MARKED ON EACH PART BY HAVING AN "X" IN THE SEVENTH CHARACTER POSITION.
- ⑦ 84501-A01 AND -A01LF ARE CUSTOMER SPECIALS.
- ⑧ CURRENT COMPANY LOGO TO BE VISIBLE IN APPROXIMATE AREA SHOWN.
9. 84501-301, -301LF, -401, -401LF, -501 and -501LF ARE OBSOLETE.
- ⑩ A  SYMBOL WILL BE NEXT TO ANY DIMENSION, NEW VIEW OR NOTE WHICH HAS BEEN MODIFIED WITH THE CURRENT DRAWING REVISION
- ⑪ 84501-093LF HAS A SPECIAL CAP 

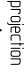

form: AdminXic

1

2

3

4

mat'l code	SEE NOTE 1	surface	tolerance	projection	product family
lfr	eqn no	dr	date	ASME Y14.5	MEG-ARRAY
R		angles	ASME Y14.5		title
		0° ±2'	unless otherwise specified	MM	4mm RECEPTACLE ASSEMBLY
		dr	XXXX.051	Scale: 2:1	dwg no
		dr	D. WAUGHEN 999-12-6		10 X 30 = 300 POS.
		plqj	D. HARPER 999-12-6		sheet 4 of 4
		dlr	D. HARPER 999-12-6		size
		qdd	D. HARPER 999-12-6		A4
sheet	revision				CUSTOMER Drawing
index	sheet				

B

A

A

B