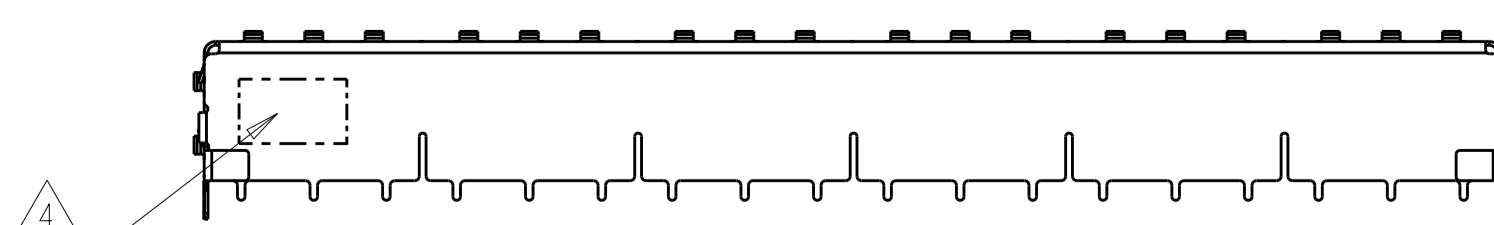
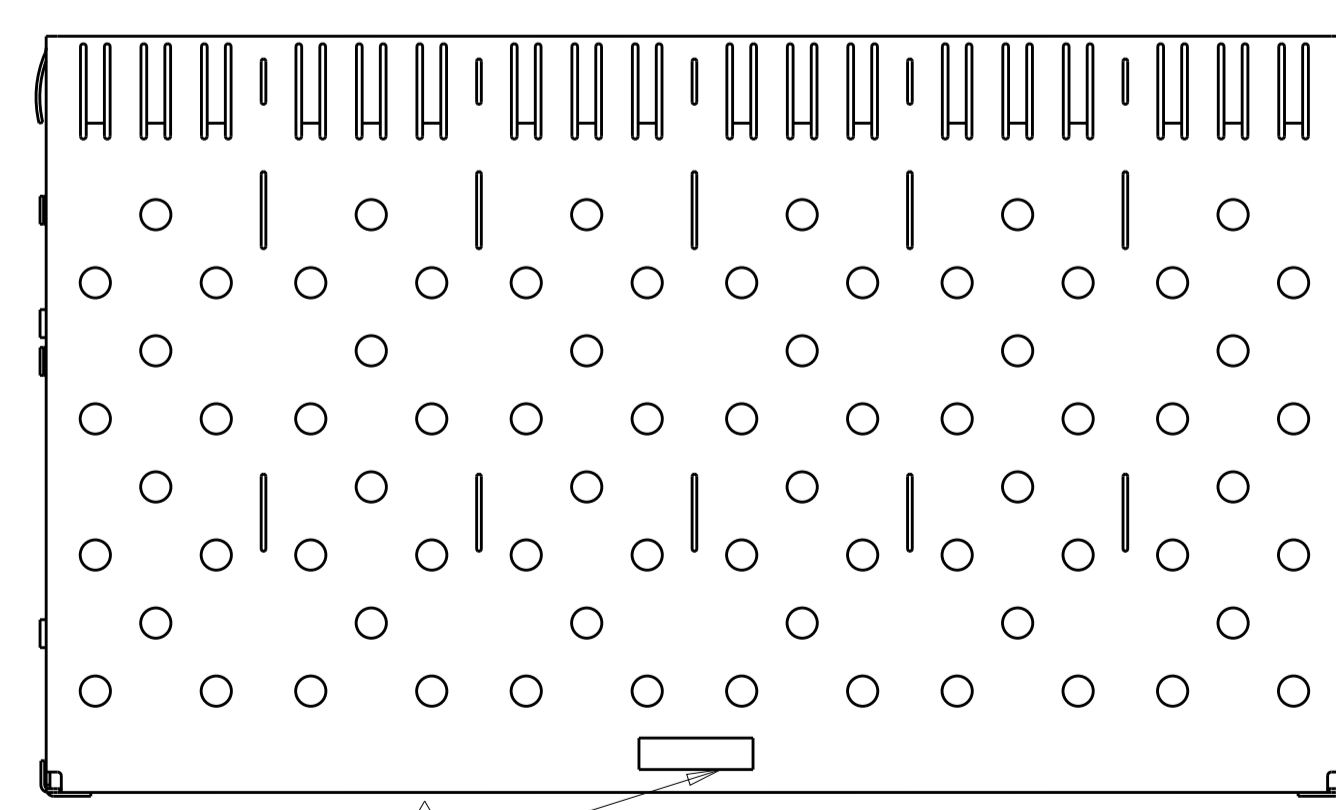
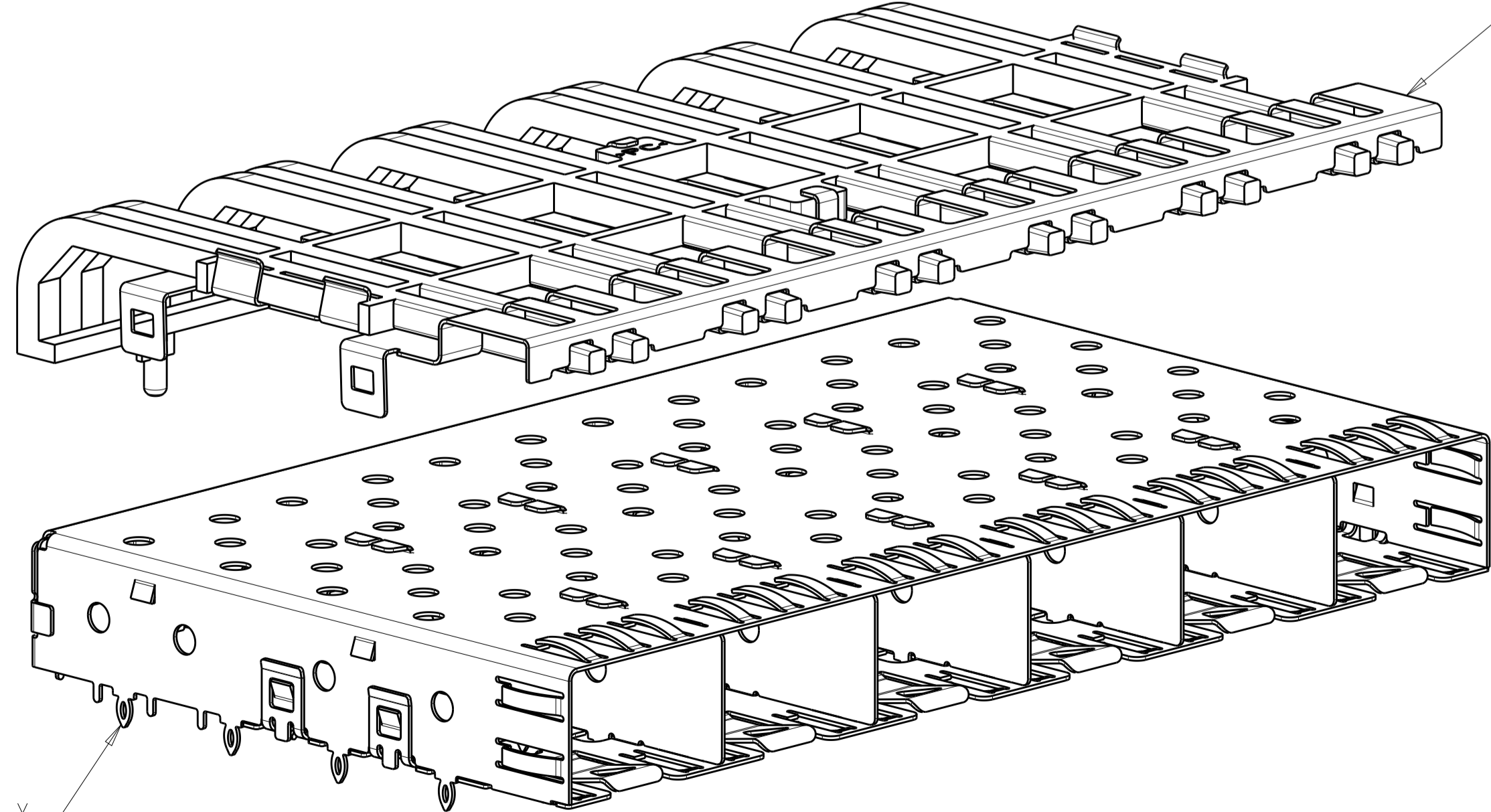
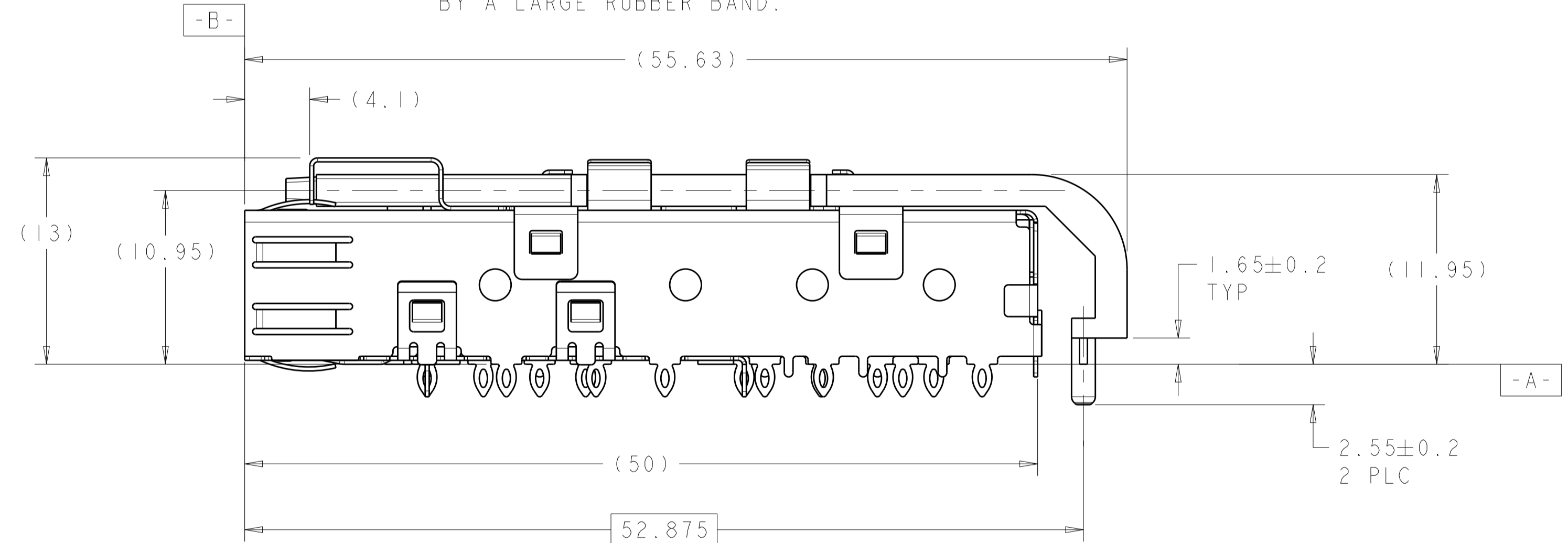
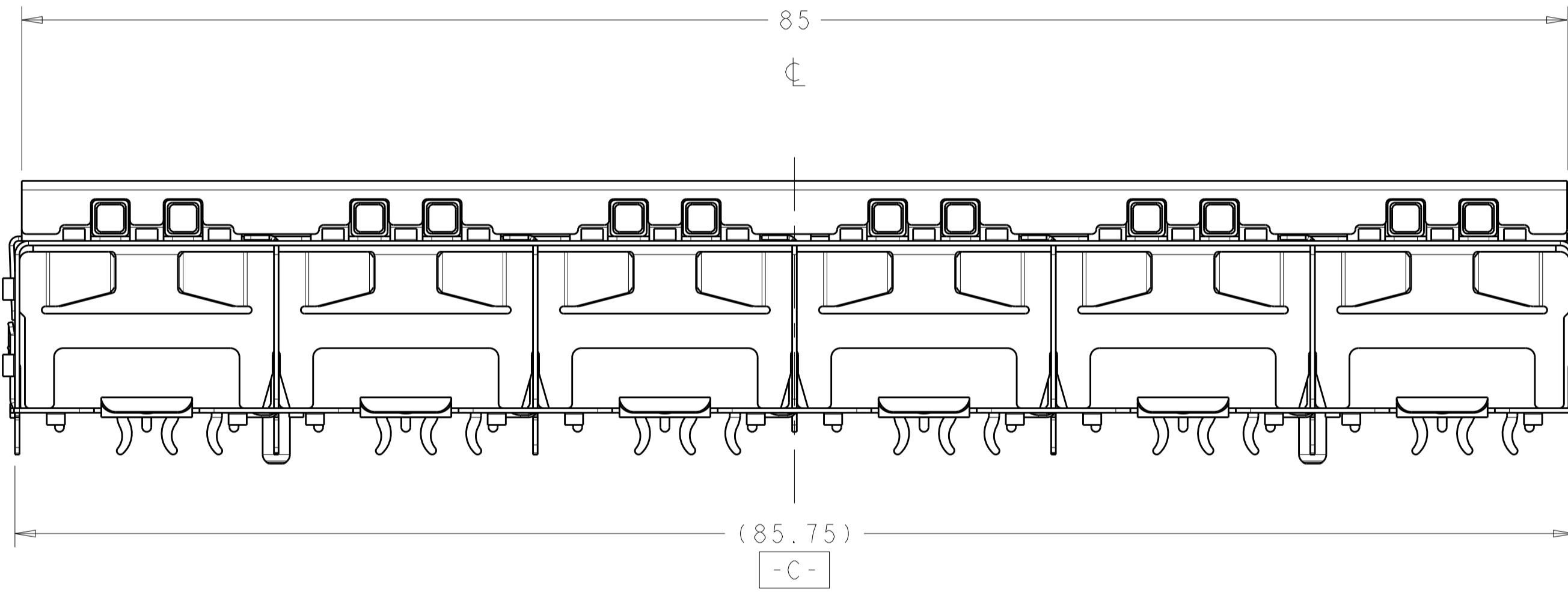
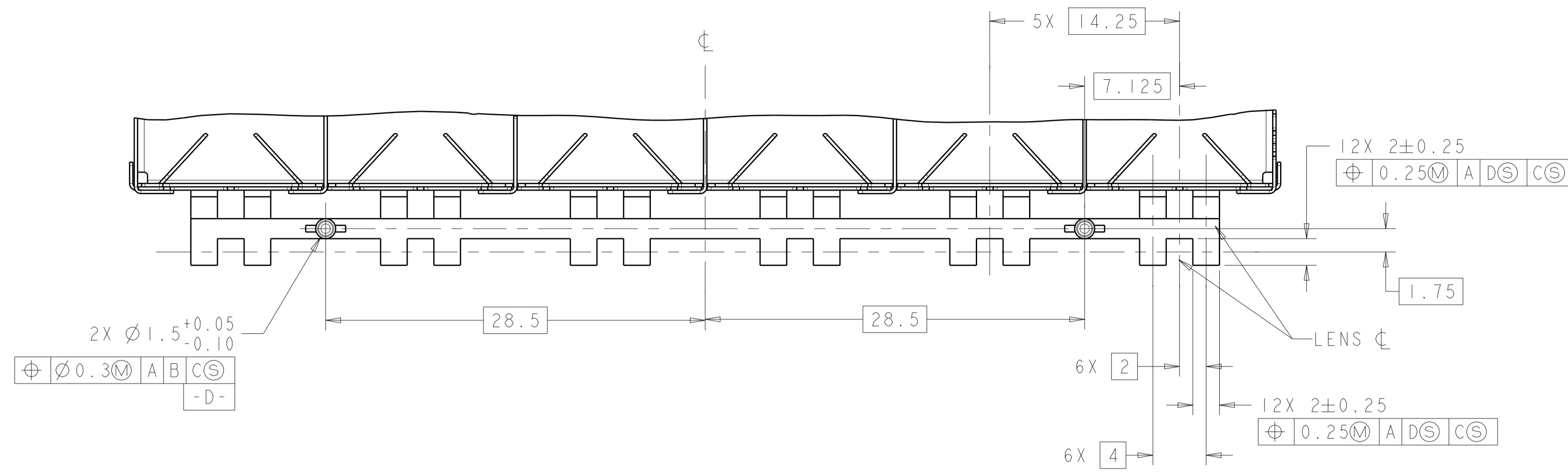


LOC	DIST	REVISIONS					
GP	00	P	LTN	DESCRIPTION	DATE	DWN	APVD
		E1		REVISED PER ECO-11-007052	06APR2011	JY	CW
		F		REVISED PER ECO-14-000886	20FEB2014	JW	SH
		F1		REVISED PER ECO-14-010419	11JUL2014	JW	SH



- △ PADS AND VIAS CHASSIS GROUND
- △ DATUM AND BASIC DIMENSIONS ESTABLISHED BY CUSTOMER.
- △ LIGHT PIPE KIT WHICH IS SEPARATE FROM CAGE ASSEMBLY, KIT TO BE ATTACHED AFTER SEATING OF 1761015-1 ON PC BOARD.
- △ DATE CODE AND PART NUMBER IN APPROXIMATE AREA SHOWN LABEL ON CAGE ASSEMBLY WILL HAVE PART NUMBER 1761015-1 OR -3.
- 5. REFERENCE STYLE 1 ON APPLICATION SPECIFICATION 114-13165 FOR ADDITIONAL INFORMATION ON CAGE ASSEMBLIES WITH LIGHT PIPES.
- △ REFERENCE APPLICATION SPEC 114-13120, HOLE A, FOR RECOMMENDED DRILL HOLES DIAMETER AND PLATING THICKNESSES.
- △ REFERENCE APPLICATION SPEC 114-13120, HOLE B, FOR RECOMMENDED DRILL HOLES DIAMETER AND PLATING THICKNESSES.
- △ PATTERN REPEATS FOR EACH PORT. SPACING BETWEEN PORTS IS 14.25mm.
- △ MINIMUM PC BOARD THICKNESS = 1.50mm.
- △ COMPANY LOGO IN APPROXIMATE AREA SHOWN
- △ BOX WILL CONTAIN TRAYS OF CAGES AND TRAYS OF LIGHT PIPE ASSEMBLIES.
- △ BOX WILL CONTAIN TRAYS OF CAGES AND TRAYS OF LIGHT PIPE ASSEMBLIES. ONE TRAY OF CAGE AND ONE TRAY OF LIGHT PIPE ASSEMBLIES WILL BE HELD BY A LARGE RUBBER BAND.

1658939-1, -2, -3, -4  
 SCALE 3:1

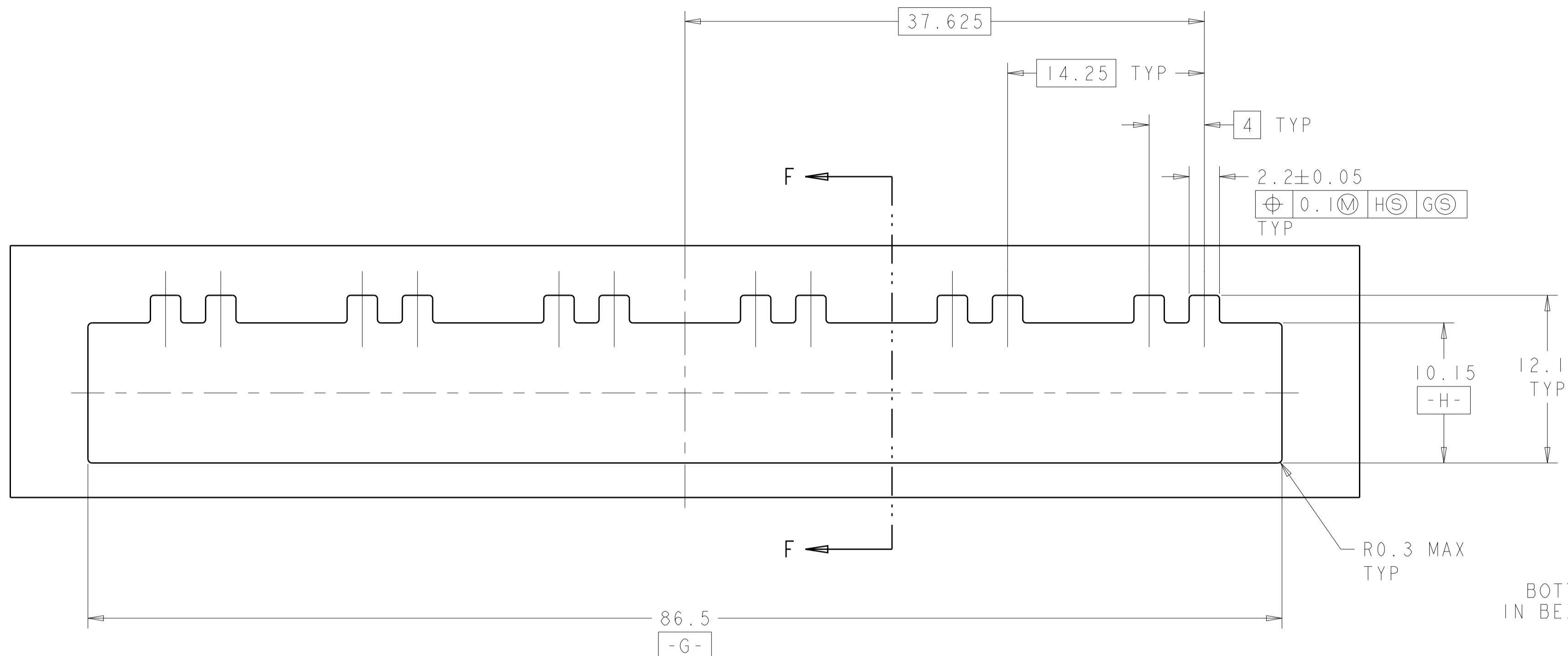
1761013-3	1751015-3	△2	1X6 ASSEMBLY	1658939-4
1761013-3	1751015-3	△1	1X6 ASSEMBLY	1658939-3
1761013-1	1751015-1	△2	1X6 ASSEMBLY	1658939-2
1761013-1	1751015-1	△1	1X6 ASSEMBLY	1658939-1
LIGHT PIPE KIT	CAGE ASSEMBLY	PACKAGE	POSITION	PART NUMBER

THIS DRAWING IS A CONTROLLED DOCUMENT.

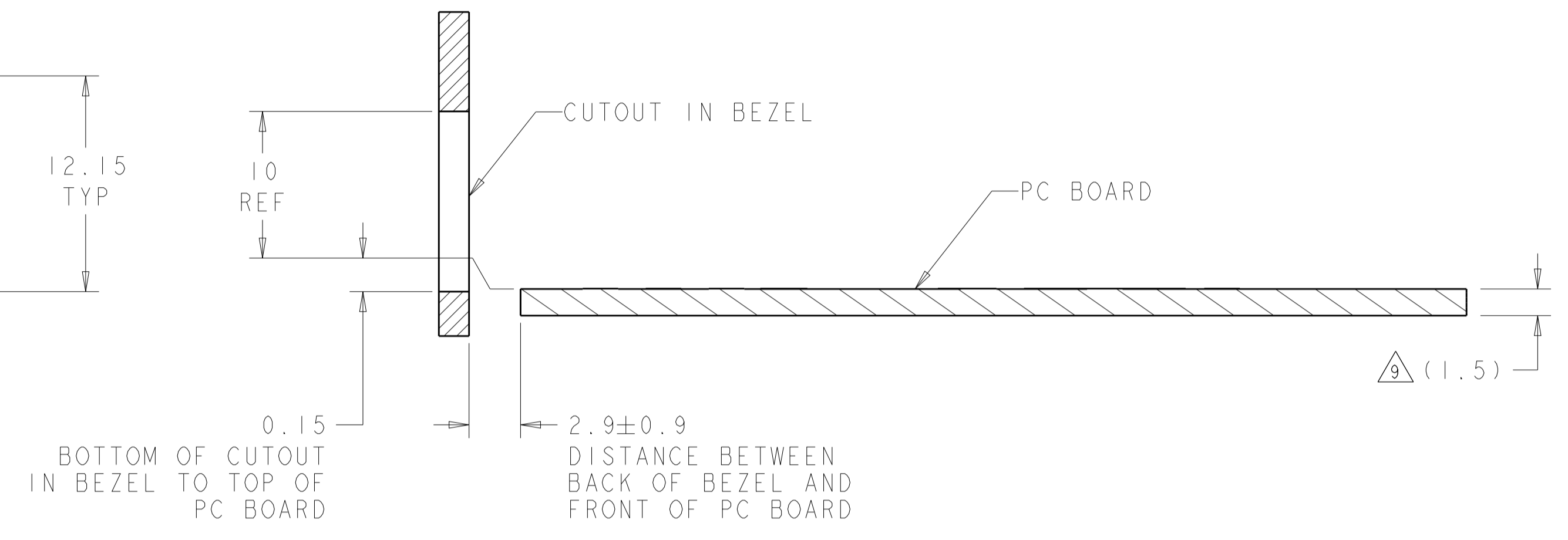
DIMENSIONS:	TOLERANCES UNLESS OTHERWISE SPECIFIED:	DWN M. E. CONNER 21NOV2003	TE Connectivity NAME SFP PRODUCT SPEC 108-1950 APPLICATION SPEC 114-13120 WEIGHT CUSTOMER DRAWING
mm	0 PLC ±0.1 1 PLC ±0.1 2 PLC ±0.10 3 PLC ±0.100 4 PLC ±0.100 ANGLES ±°	CHK M. J. PHILLIPS 21NOV2003	
	FINISH	APVD M. J. PHILLIPS 21NOV2003	
MATERIAL		SIZE CAGE CODE DRAWING NO A1 00779 C=1658939	

SCALE 4:1 SHEET 1 OF 3 REV F1

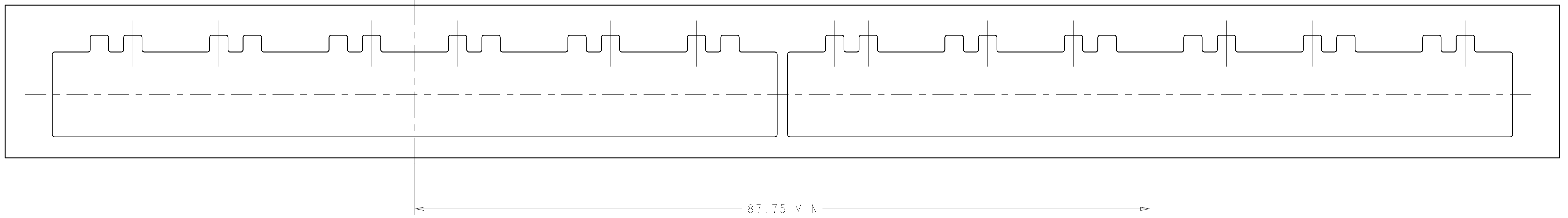
LOC		DIST		REVISIONS			
P	LTN	DESCRIPTION	DATE	DMN	APVD		
-	-	SEE SHEET 1	-	-	-		



RECOMMENDED BEZEL CUTOUT



SECTION F-F  
RECOMMENDED BEZEL CONFIGURATION



THIS DRAWING IS A CONTROLLED DOCUMENT.

DIMENSIONS:	TOLERANCES UNLESS OTHERWISE SPECIFIED:	DMN	M. E. CONNER	21NOV2003
mm	0 PLC ±0.1	CHK	M. J. PHILLIPS	21NOV2003
	1 PLC ±0.1	APVD	M. J. PHILLIPS	21NOV2003
	2 PLC ±0.10	PRODUCT SPEC		
	3 PLC ±0.100	APPLICATION SPEC		
	4 PLC ±	SIZE	CAGE CODE	DRAWING NO
	ANGLES ±°	114-13120		
MATERIAL	FINISH	WEIGHT		

**STE** TE Connectivity  
 NAME: SFP  
 1X6 CAGE ASSEMBLY WITH LIGHT PIPE  
 SIZE: A100779 C=1658939  
 CUSTOMER DRAWING SCALE: 4:1 SHEET 2 OF 3 REV: F1

