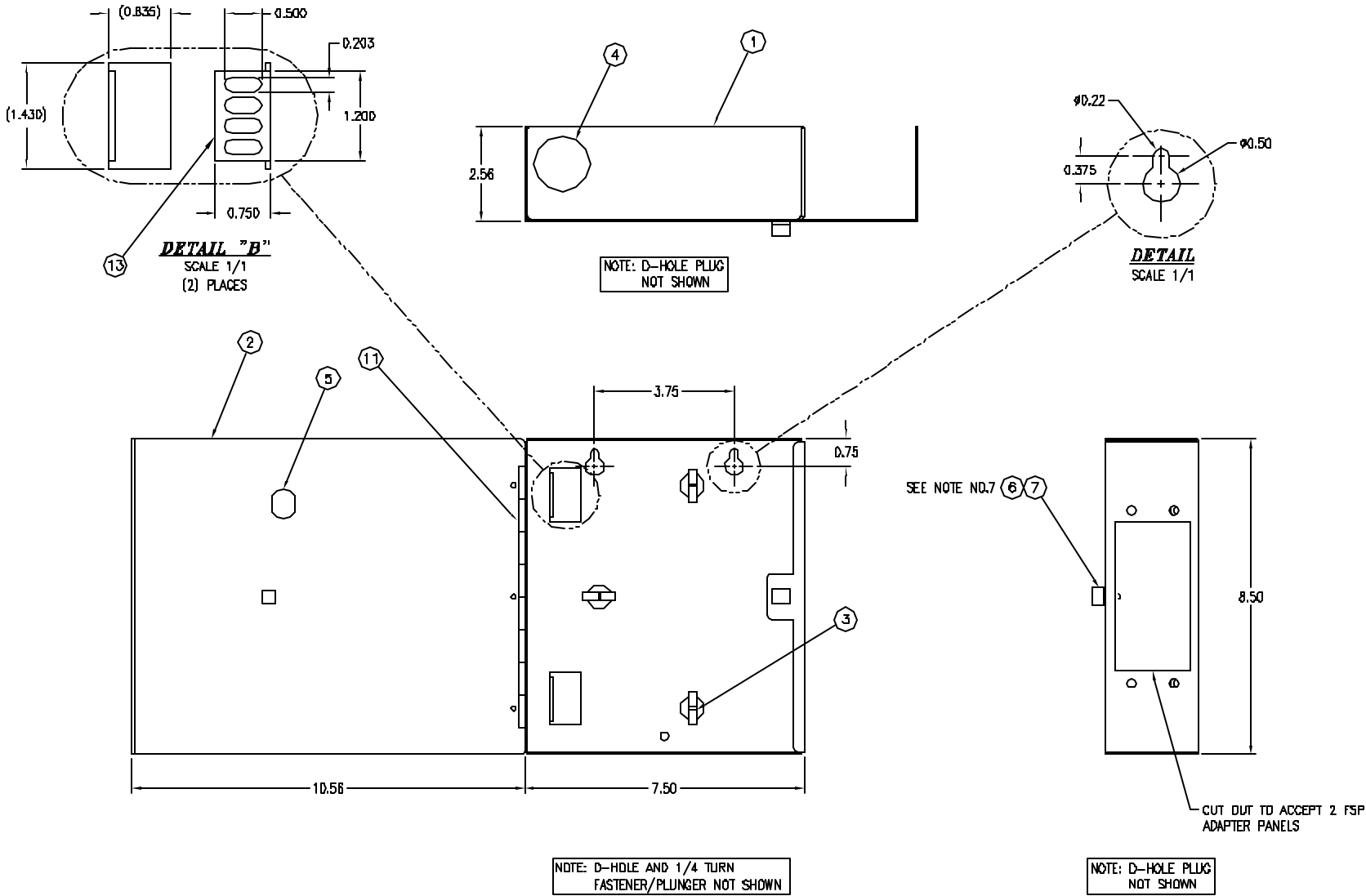



ITEM NO.	DESCRIPTION	QTY.
1	BASE	1
2	FRONT COVER	1
3	SADDLE CLIPS	3
4	HOLE PLUG, 1.5" DIA.	2
5	D-HOLE PLUG	1
6	1/4 TURN FASTENER (INSTALLED)	2
7	1/4 TURN PLUNGER (INSTALLED)	2
8	GRID LABEL	1
9	DANGER LABEL	1
10	CABLE GROMMET	1
11	HINGE	1
12	10" WIRE TIE	4
13	CABLE TIE-OFF, 2 SLOTS	2
14	INSTRUCTION SHEET	1

CATALOG NUMBER	DESCRIPTION
FTU2SP	ASSEMBLY, 6/12 PORT SHROUDED CABINET



- NOTES:
1. SINGLE DOOR WALL MOUNT CABINET UTILIZES UP TO TWO FSP SERIES ADAPTER PANELS.
 2. EXTENDED FRONT COVERS PROVIDE PATCH CORD PROTECTION.
 3. CABLE ENTRY PORTS DESIGNED FOR STACKABLE MOUNTING.
 4. OPTIONAL LOCKING FEATURE ON FRONT COVER.
 5. CABINET DOES NOT ACCOMMODATE SPLICE TRAYS.
 6. CABINET IS 16 GA. CRS WITH BLACK ELECTROSTATICALLY APPLIED POWDER COAT.
 7. ONE SET INSTALLED; AND AN ADDITIONAL SET IS INCLUDED IN THE HARDWARE PACK.
 8. ITEM NO.'S (8,9,10,12 & 13) ARE PACKAGED IN HARDWARE PACK
 9. SPECIFICATIONS SUBJECT TO CHANGE WITHOUT NOTICE.

A	4296	01/21/02	INITIAL RELEASE	PSM	JL
REV.	ECN	DATE	DESCRIPTION	CHG BY	APPD BY

Checked on AUTOCAD	DIMENSIONING AND TOLERANCE PER ANSI Y14.5M-1982 UNLESS OTHERWISE SPECIFIED, DIMENSIONS ARE IN INCHES (MM). TOLERANCES .XX = ±.01 (.25) .XXX = ±.005 (.127) .XXXX = ±.0025 (.0635) ANGLE TOL ±1°	PROJECT REFERENCE:		 Hubbell Premise Wiring HUBBELL INCORPORATED (Delaware) 14 Lovin Hill Road, Norwalk, Connecticut 06850
	IN ACCEPTING OUR DRAWINGS, BLUEPRINTS, OR SUPPORTING DOCUMENTATION FOR QUOTATION OR OTHER PURPOSES, YOU AGREE NOT TO DISCLOSE TO OTHERS THE IDEAS, INFORMATION, OR DESIGNS SHOWN HEREIN, AND THAT YOU WILL MAKE NO USE OF SAME WITHOUT PERMISSION	MATERIAL:		
		DRAWN BY: P.S.MAGUIRE 01/21/02		
		CHECKED BY:		
		APPROVED BY: JOHN LUTZEN 03/06/02		
		SIZE D	DRAWING NO. C10977	REV. A
		SCALE: 1/2	SHEET 1 OF 1	