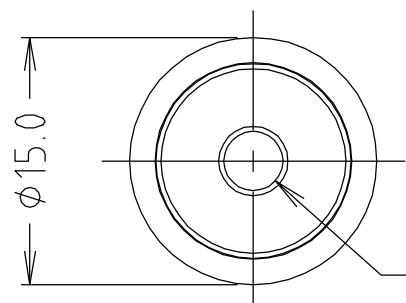
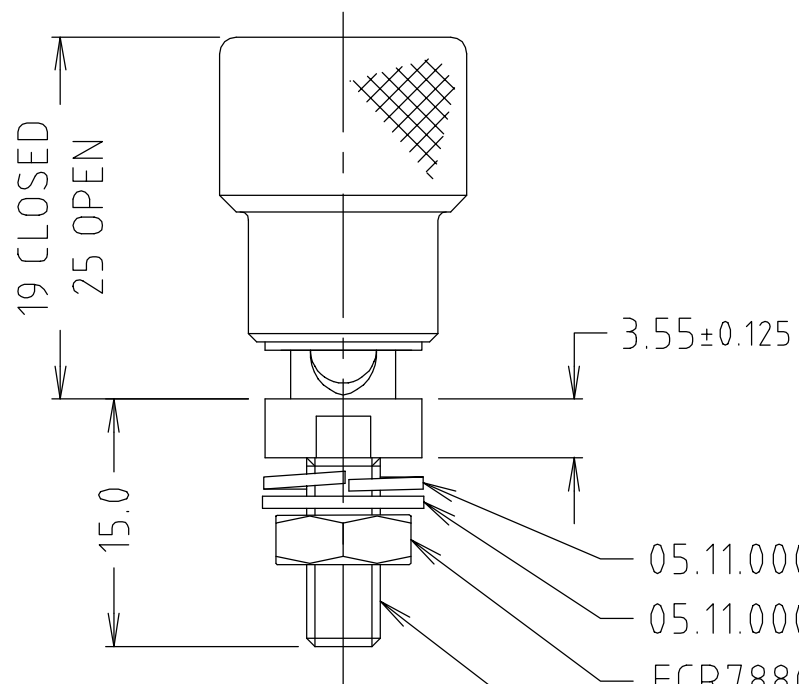


ISS.	AMEND	DATE
1	ISSUED	15/03/99
2	WAS CL2160B	18/02/05
3	UPDATED	16/11/12
4	RATING ADDED	02/10/15



RED OR BLACK COLOURED INSERT ASSEMBLED.
 Ø6.80 STANDARD OR Ø3.60 'Y' TYPE
 CENTRE HOLE SEE TABLE



VARIANTS			
PART NUMBER	USES INSERT	INSERT COLOUR	INSERT HOLE TYPE
CL2160B	FCR7916B	BLACK	Ø6.80 STANDARD
CL2160R	FCR7916R	RED	Ø6.80 STANDARD
CL2160BY	FCR7915B	BLACK	Ø3.60 Y TYPE
CL2160RY	FCR7915R	RED	Ø3.60 Y TYPE

- 05.11.0006.87 - SPRING WASHER
- 05.11.0002.53 - PLAIN WASHER
- FCR7880SA7 - NUT
- 0508.1701.52 - SPINDLE ASSEMBLY
- 10x32 UNF THREAD

CURRENT RATING: 30A
 SUPPLIED UNASSEMBLED AS A KIT OF PARTS
 ALL ITEMS 1x PER KIT.

RoHS
COMPLIANT

TOLERANCE
 NO DEC. PLACE ± 0.50
 1 DEC. PLACE ± 0.20
 2 DEC. PLACE ± 0.10
 HOLE Ø ± 0.10
 ANGLES ± 1/2°
 UNLESS OTHERWISE STATED

DO NOT SCALE

1ST DRAWN : 4/2/99