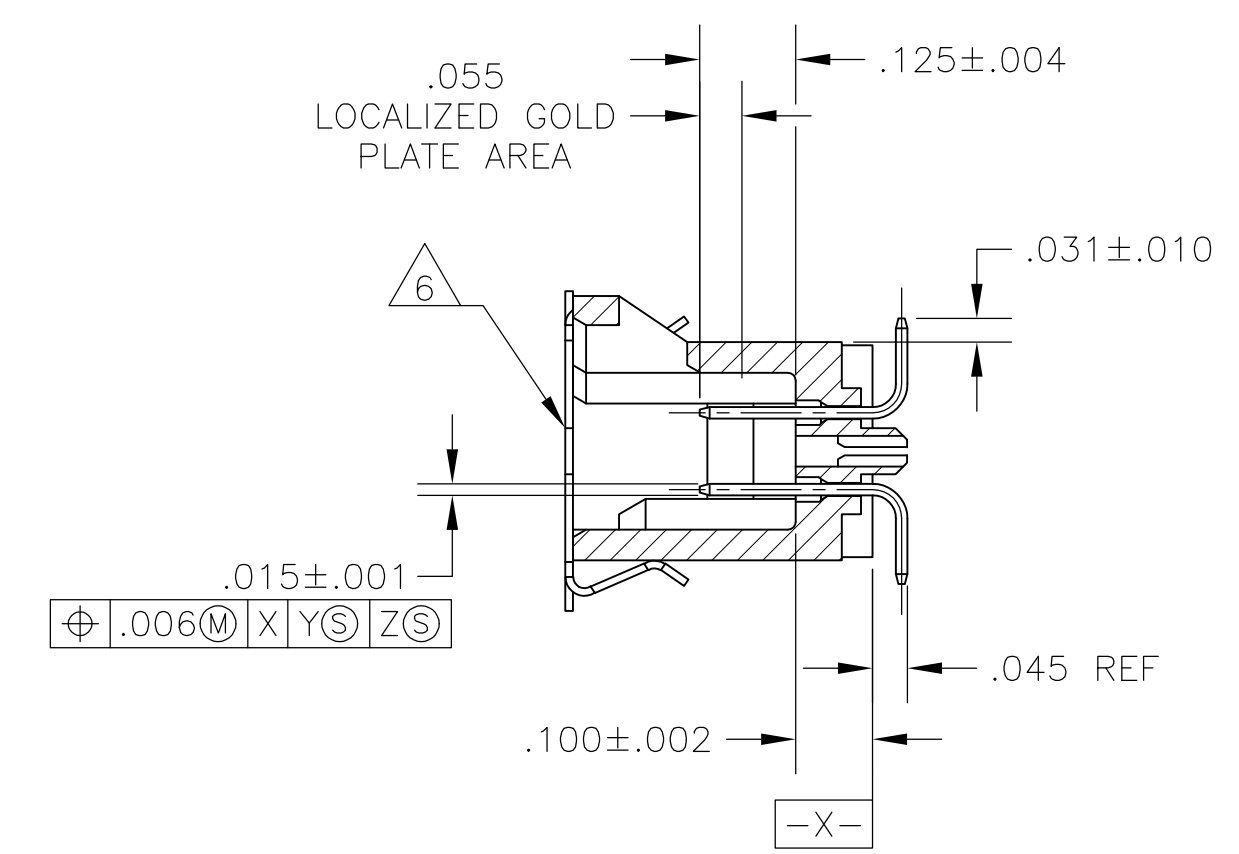
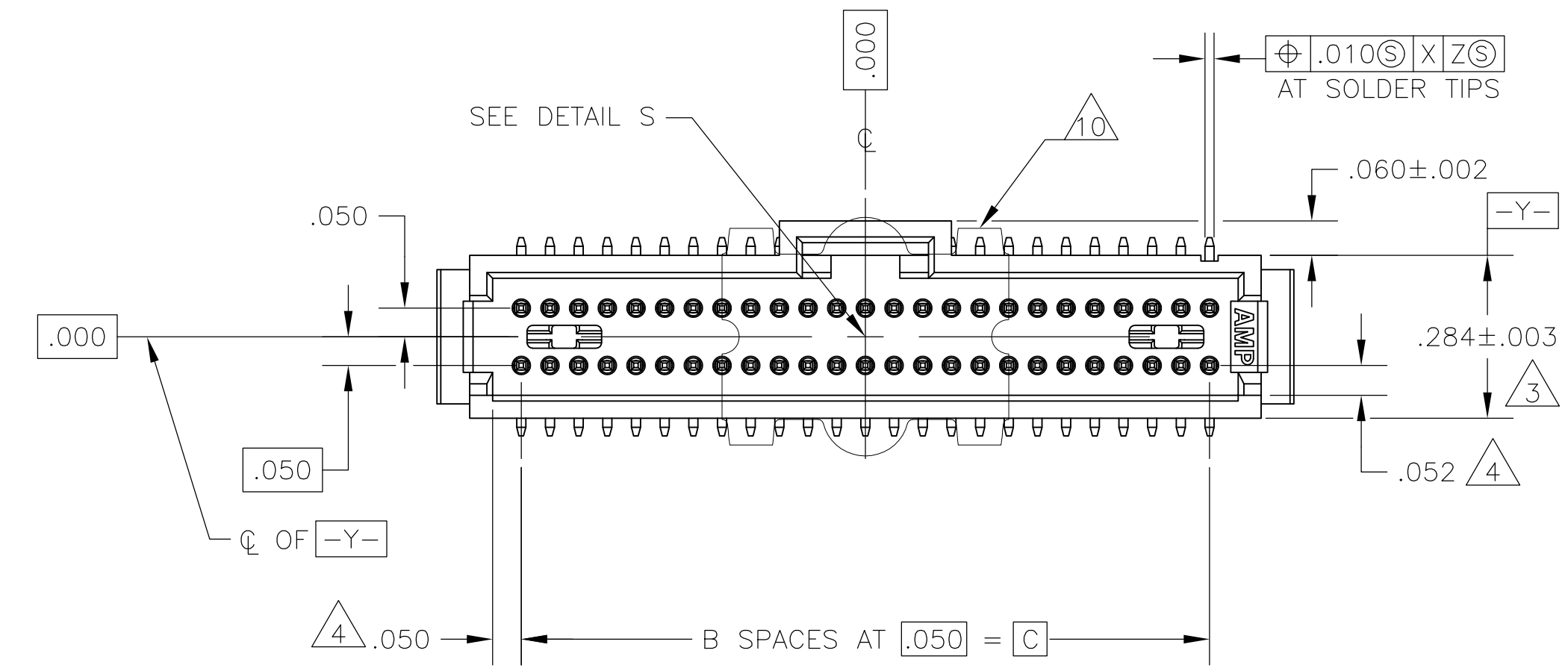
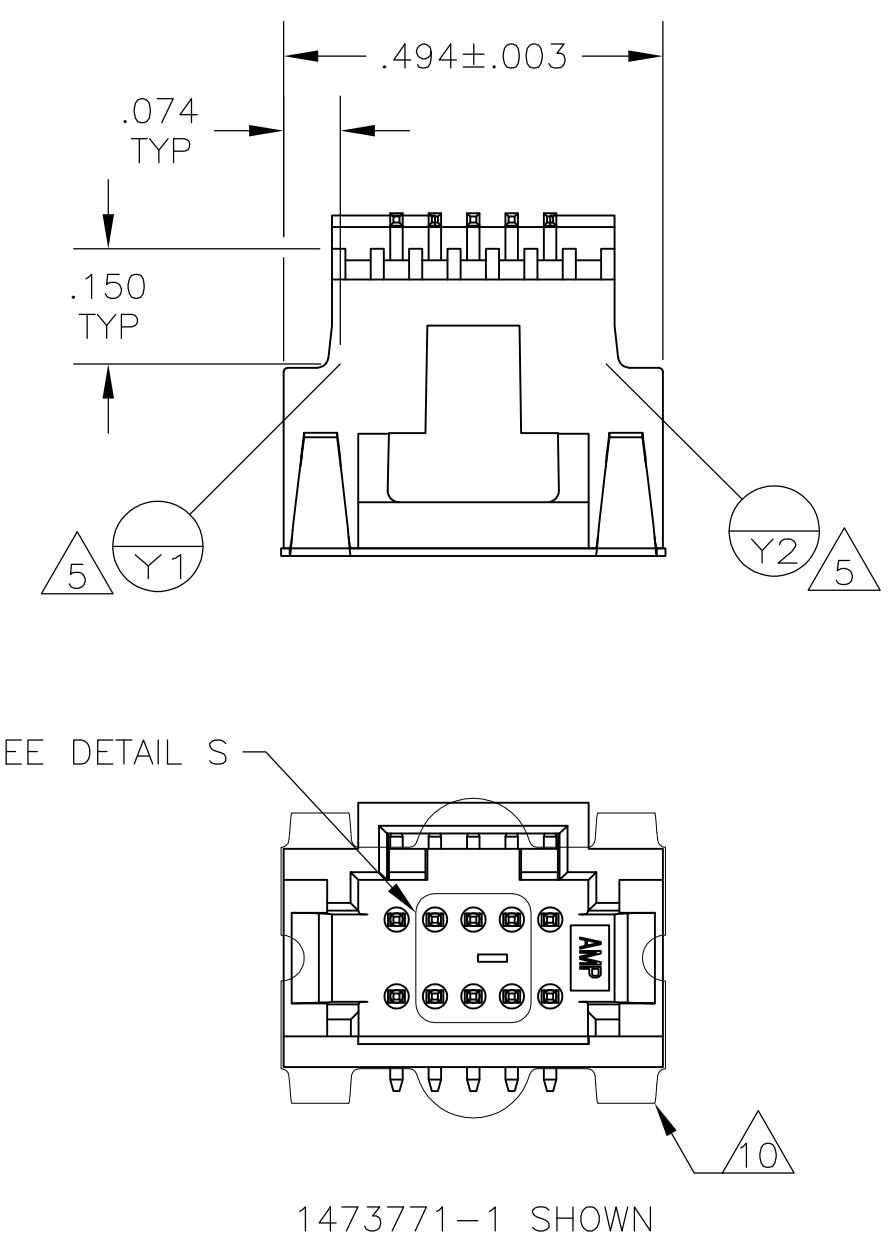
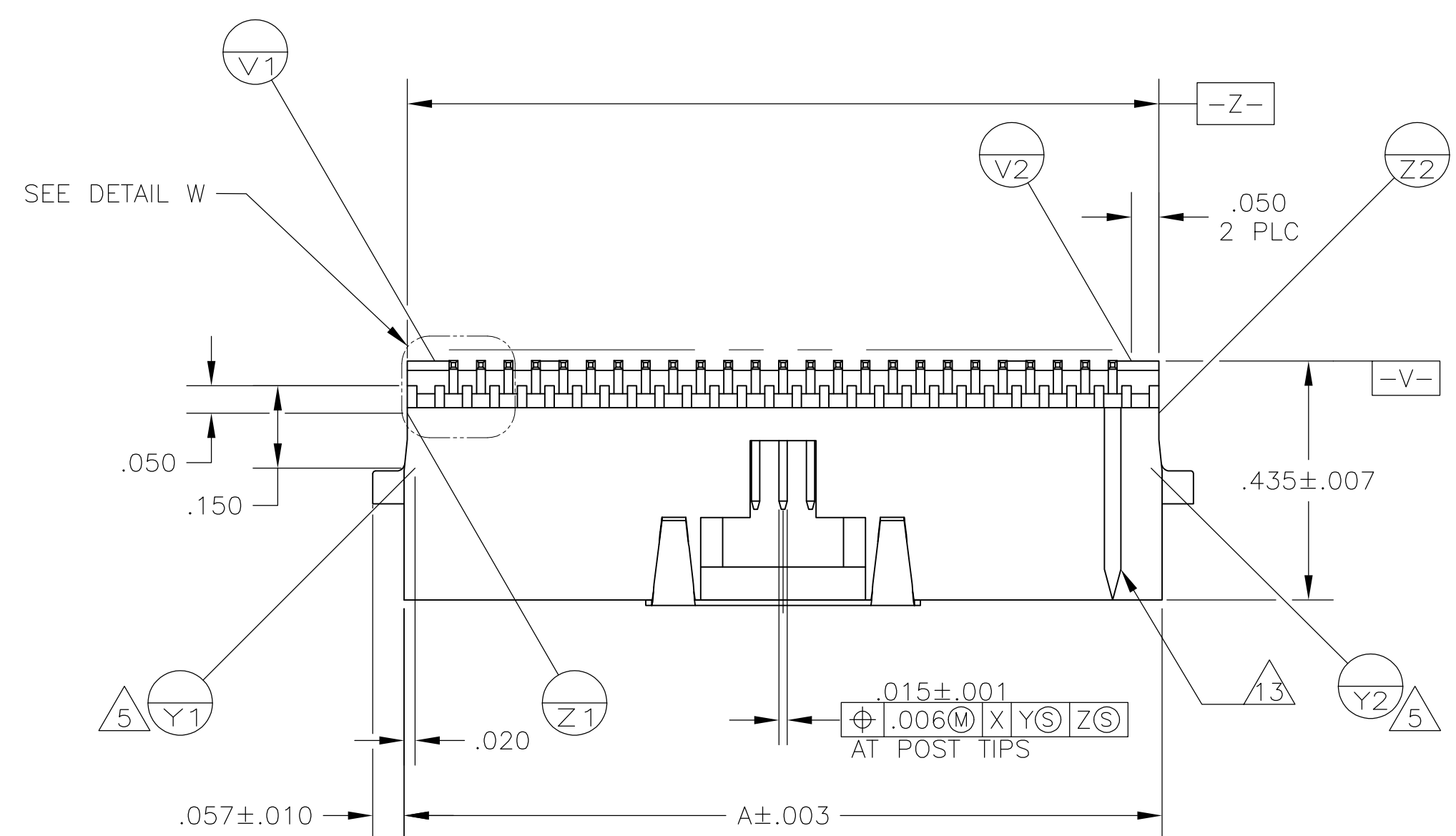
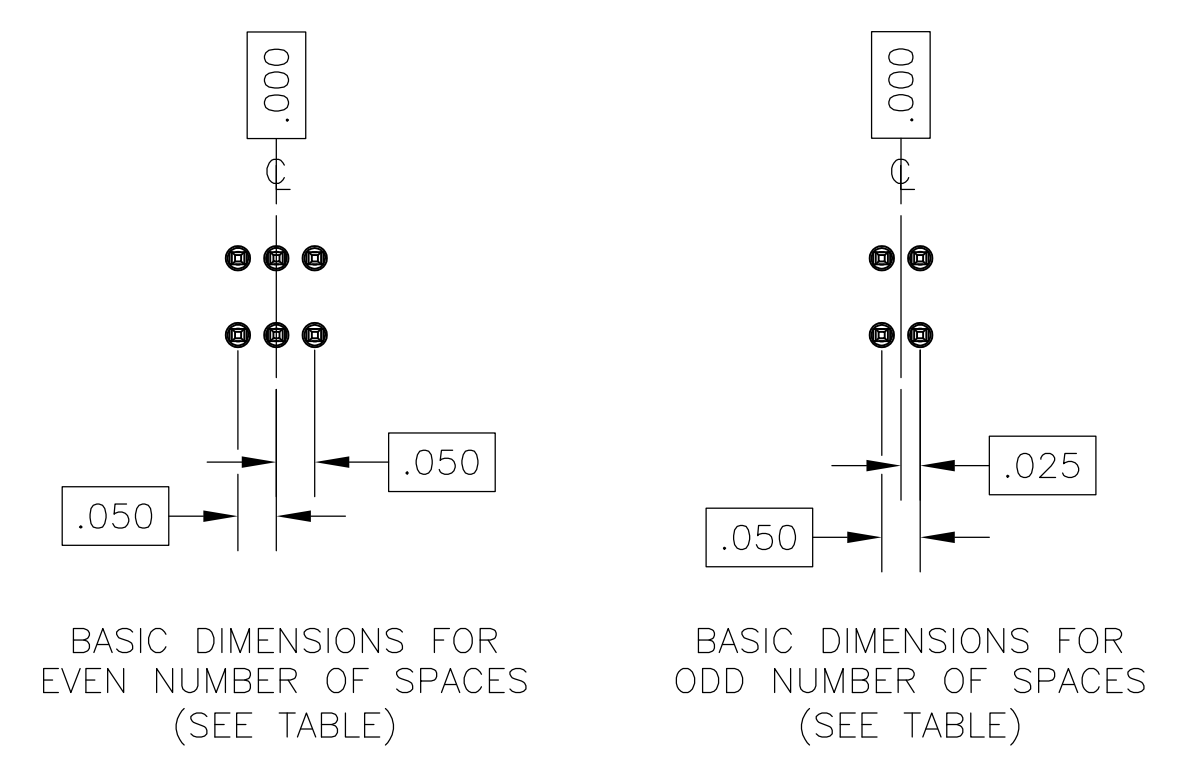


LOC	DIST	REVISIONS					
AD	00	REV	LTR	DESCRIPTION	DATE	DWN	APVD
G		REVISED	PER	ECO-15-004125	18JUN2015	NK	JO



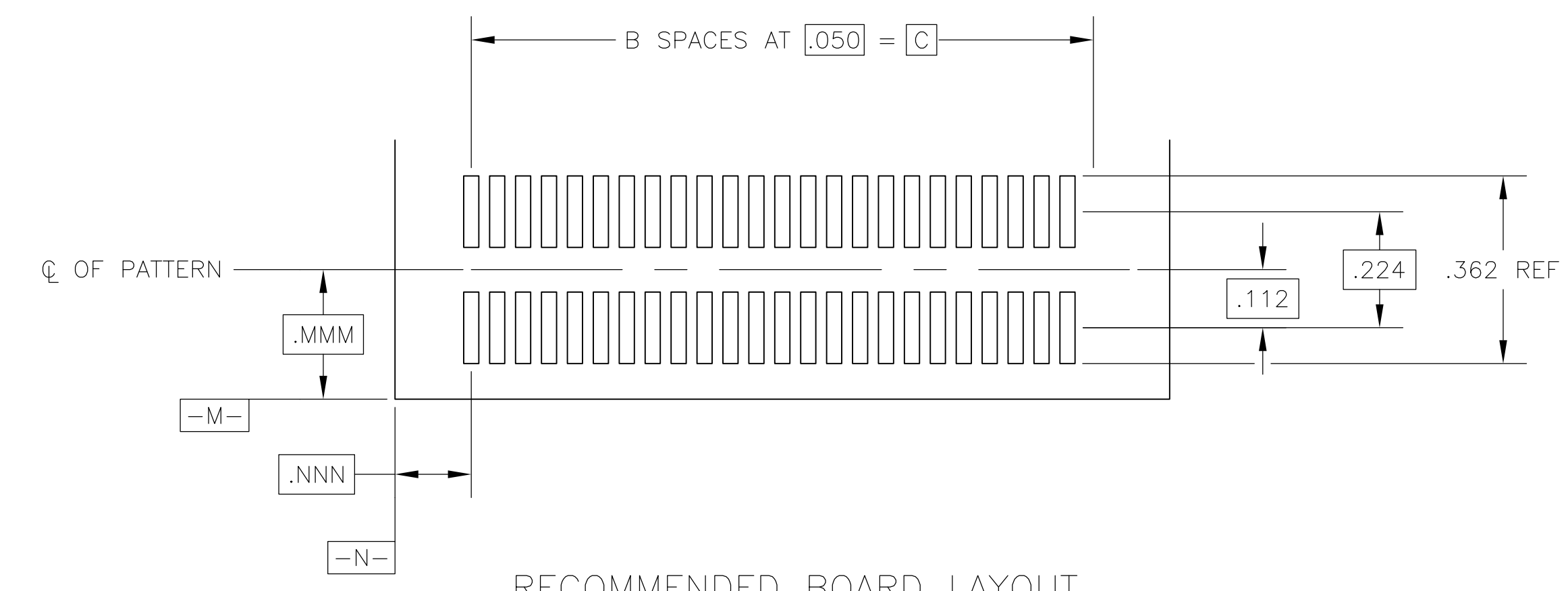
- 1 .000030 GOLD IN LOCALIZED PLATE AREA, .000150 TIN-LEAD ON SOLDER TAILS ALL OVER .000050 NICKEL.
- 2 CIRCUIT IDENTIFICATION FEATURE OMITTED ON 10 POSITION HEADER ASSEMBLIES.
- 3 DIMENSION APPLIES AT BASE OF SHROUD.
- 4 THE NOTED DIMENSIONS APPLY AT THE MATING FACE OF THE HOUSING.
- 5 $\text{\textcircled{Y3}}$ $\text{\textcircled{Y4}}$ ARE LOCATED THE SAME AS $\text{\textcircled{Y1}}$ $\text{\textcircled{Y2}}$ EXCEPT ON OPPOSITE SIDE OF HOUSING.
- 6 VACUUM COVER DESIGNED FOR .160 [4mm] DIA NOZZLE. VACUUM COVER TO BE REMOVED AFTER SOLDERING.
- 7 PACKAGED IN TAPE AND REEL PER EIA-481 SPECIFICATIONS. SEE CHART FOR TAPE WIDTHS.
- 8 .265 [6.75mm] MIN TARGET AREA FOR VACUUM PICK-UP.
- 9 HOUSING: PPA. CONTACT: COPPER ALLOY. VACUUM COVER: ALUMINUM
- 10 VACUUM COVER SHOWN IN PHANTOM LINE.
- 11 .000030 GOLD IN LOCALIZED PLATE AREA, .000150 TIN ON SOLDER TAILS, ALL OVER .000050 NICKEL.
- 12 OBSOLETE PARTS: OBSOLETE CIS STREAMLINING PER D.RENAUD / D.SINISI
- 13 NO CIRCUIT IDENTIFICATION FEATURE ON 10,12,20,24 AND 30 POSITION PARTS.



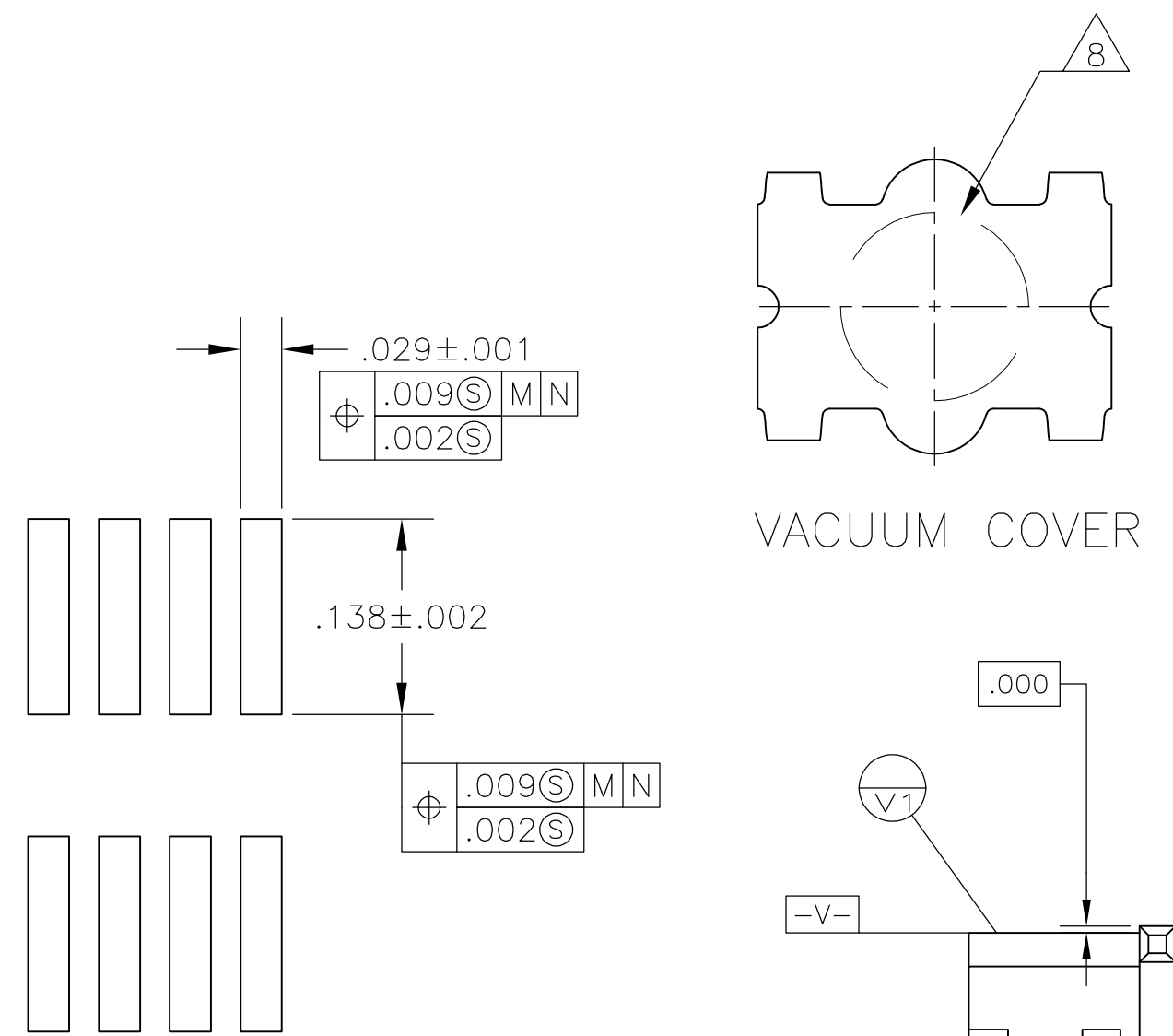
BASIC DIMENSIONS FOR EVEN NUMBER OF SPACES (SEE TABLE)
BASIC DIMENSIONS FOR ODD NUMBER OF SPACES (SEE TABLE)

DETAIL S

- 14 FINISH: .000001 MIN GOLD ON GOLD PLATED AREA, .000150-.000250 MATTE TIN-LEAD ON TIN PLATED AREA, UNDER PLATING TO BE .000050-.000100 NICKEL ON ENTIRE CONTACT.
- 15 FINISH: .000001 MIN GOLD ON GOLD PLATED AREA, .000150-.000250 MATTE TIN ON TIN PLATED AREA, UNDER PLATING TO BE .000050-.000100 NICKEL ON ENTIRE CONTACT.
- 16 PRELIMINARY - NOT FOR PRODUCTION

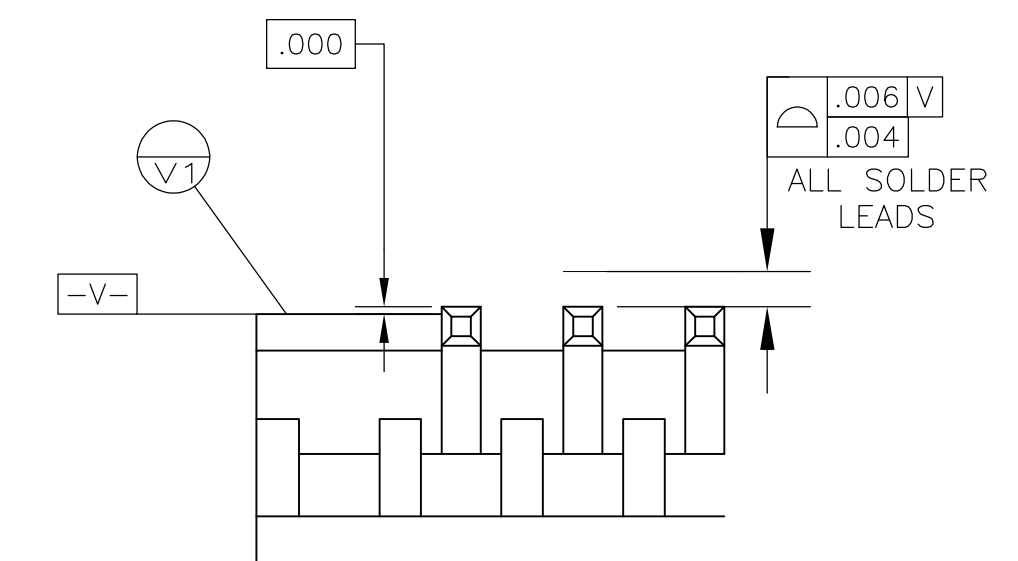


RECOMMENDED BOARD LAYOUT



VACUUM COVER

DETAIL G
SCALE 8:1




DETAIL W

THIS DRAWING IS A CONTROLLED DOCUMENT.		DIN B HAYMAKER 17JAN00		TE Connectivity	
DIMENSIONS: INCHES		TOLERANCES UNLESS OTHERWISE SPECIFIED:		APVD J. MOSIER 17JAN00 NAME: HEADER ASSEMBLY, W/SIDE & END LATCHES, VERTICAL, SHROUDED, DOUBLE ROW, SURFACE MOUNT PRODUCT SPEC: 108-1093 APPLICATION SPEC: 114-25035 SIZE: A1 WEIGHT: 147377 CUSTOMER DRAWING: 147377	
0 PLC ± - 1 PLC ± - 2 PLC ± - 3 PLC ± .005 4 PLC ± - ANGLES ± -		0.006 V .004 ALL SOLDER LEADS		SCALE: 4:1 SHEET: 1 OF 2 REV: G	
MATERIAL		FINISH		RESTRICTED TO	
SEE NOTES					

15	56MM	1.050	21	1.230	44	18	8-147377-0
	44mm	.550	11	.730	24	18	7-147377-9
	88mm	2.450	49	2.630	100		7-147377-8
	88mm	1.950	39	2.130	80	18	7-147377-7
	72mm	1.450	29	1.630	60	18	7-147377-6
	56mm	1.200	24	1.380	50	18	7-147377-5
	56mm	.950	19	1.130	40	18	7-147377-4
	56mm	.700	14	.880	30	18	7-147377-3
	44mm	.450	9	.630	20	18	7-147377-2
	32mm	.200	4	-	10		7-147377-1
11	56MM	1.050	21	1.230	44	12	6-147377-0
	44mm	.550	11	.730	24		5-147377-9
	88mm	2.450	49	2.630	100		5-147377-8
	88mm	1.950	39	2.130	80		5-147377-7
	72mm	1.450	29	1.630	60		5-147377-6
	56mm	1.200	24	1.380	50		5-147377-5
	56mm	.950	19	1.130	40		5-147377-4
	56mm	.700	14	.880	30		5-147377-3
	44mm	.450	9	.630	20		5-147377-2
	32mm	.200	4	-	10		5-147377-1
FINISH	TAPE WIDTHS	C	B	A	NO OF POSN	PART NUMBER	

14	56MM	1.050	21	1.230	44	18	3-147377-0
	44mm	.550	11	.730	24	18	2-147377-9
	88mm	2.450	49	2.630	100		2-147377-8
	88mm	1.950	39	2.130	80	18	2-147377-7
	72mm	1.450	29	1.630	60		2-147377-6
	56mm	1.200	24	1.380	50	18	2-147377-5
	56mm	.950	19	1.130	40	18	2-147377-4
	56mm	.700	14	.880	30	18	2-147377-3
	44mm	.450	9	.630	20		2-147377-2
	32mm	.200	4	-	10	18	2-147377-1
1	56MM	1.050	21	1.230	44	12	1-147377-0
	44mm	.550	11	.730	24		147377-9
	88mm	2.450	49	2.630	100		147377-8
	88mm	1.950	39	2.130	80		147377-7
	72mm	1.450	29	1.630	60		147377-6
	56mm	1.200	24	1.380	50		147377-5
	56mm	.950	19	1.130	40		147377-4
	56mm	.700	14	.880	30		147377-3
	44mm	.450	9	.630	20		147377-2
	32mm	.200	4	-	10		147377-1
FINISH	TAPE WIDTHS	C	B	A	NO OF POSN	PART NUMBER	

THIS DRAWING IS A CONTROLLED DOCUMENT.		DN B. HAYMAKER 17JAN00	 TE Connectivity
DIMENSIONS: INCHES		CHK J. MOSIER 17JAN00	
TOLERANCES UNLESS OTHERWISE SPECIFIED:		APVD J. MOSIER 17JAN00	NAME HEADER ASSEMBLY, W/SIDE & END LATCHES, VERTICAL, SHROUDED, DOUBLE ROW, SURFACE MOUNT
0. PLC ± - 1. PLC ± - 2. PLC ± - 3. PLC ± .005 4. PLC ± - ANGLES ± -		PRODUCT SPEC 108-1093	APPLICATION SPEC AMPMODU System 50, W/O HOLDDOWNS
MATERIAL	FINISH	SIZE A1	CAGE CODE 00779
SEE NOTES		DRAWING NO 147377	RESTRICTED TO
CUSTOMER DRAWING		SCALE 4:1	SHEET 2 OF 2